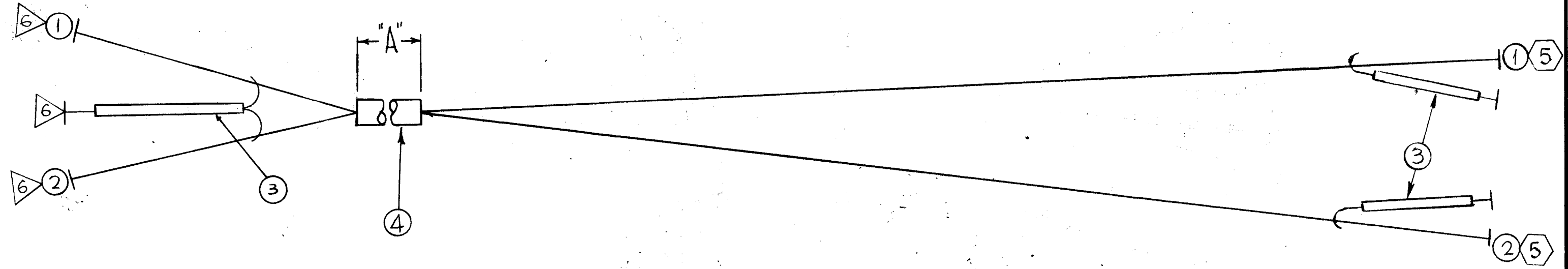


TMC PT. NO	'A' (INCHES)
CA1161	52
CA1161-2	78

CA1161

REVISIONS					
SYM	DESCRIPTION	DATE	E.M.N. NO.	DRAFT	CHKD APPD
X	EXPERIMENTAL RELEASE	7-15-65		JH	
X1	CHART REVISED	7-15-65		JH	
X2	A2060- CHGD TO A2960-	8-0-65		JH	
X3	LEFT SIDE W/EXTEND TO 8" RT. SIDE W/EXTEND TO 9" BOTH SIDES EXTENDED PHYSICALLY. IT B ADDED	8-7-65	-M	JC	
X4	RT. SIDE EXTENDED LEADS FROM 9" TO 11"	8-8-65	-M	JC	MS
Ø	ORIGINAL RELEASE FOR PRODUCTION	9/10/65	Ø	XV	



THIS SYMBOL DENOTES END OF INSULATION AND NAIL DRIVING POINT. WIRE MUST BE STRIPPED 3/4" BEYOND THIS POINT AND TINNED 1/2" UNLESS OTHERWISE SPECIFIED.

THE ABOVE SYMBOL DENOTES END OF SHIELD, WHICH SHOULD BE TERMINATED AS SHOWN, LEAVING EXCESS SHIELDING AS A PIGTAIL. TIN PIGTAIL 1/4 INCH.

NOTES

REQ'D.	ITEM	PART NUMBER	DESCRIPTION	SYMBOL
X	8	CD101-1MW	CORD, LACING, NYLON	
X	7	BS100	SOLDER, TIN ALLOY	
	3	6	PL242-3	CONT, PLUG, TAPER PIN
	4	5	TE120-2	TERM., LUG-SPADE No.6
SEE CHART		4	PX100-1-148	INS, SLVG-SZ 7
X	3	PX100-1-095	INS, SLVG-SZ 11	
SEE CHART		2	MWC20 (7) SJ97	CBL, SP, SHLD/JKT
SEE CHART		1	MWC20 (7) SJ7	CBL, SP, SHLD/JKT

M. STURMER LIST OF MATERIAL THE TECHNICAL MATERIEL CORP. MAMARONECK, NEW YORK

1	DDRR-506	A2960-4
		-3
		-2
1	DDRR-506	A2960-1
Q'TY./UNIT	MODEL USED ON	ASS'Y. NO.
SCALE	CODE	

THE CONTENTS OF THIS DRAWING ARE THE EXCLUSIVE PROPERTY OF THE TECHNICAL MATERIEL CORP. ITS UNAUTHORIZED USE OR REPRODUCTION IN WHOLE OR IN PART IS STRICTLY FORBIDDEN.

MATERIAL		THE TECHNICAL MATERIEL CORP.	
FINISH		MAMARONECK, NEW YORK	
TITLE			
CABLE ASSY, SP, INTERCONNECT			
DRAWN	DATE	FINAL APPROVAL	
F.S. LEV. 3RD	7/14/65	[Signature]	
CHECKED	DATE	DATE	
[Signature]	8-8-65	8/10/65	
ELECT. DES.	DATE	CA1161	
[Signature]	8-8-65	Ø	
MECH. DES.	DATE	SHEET	
		REV. LTR.	