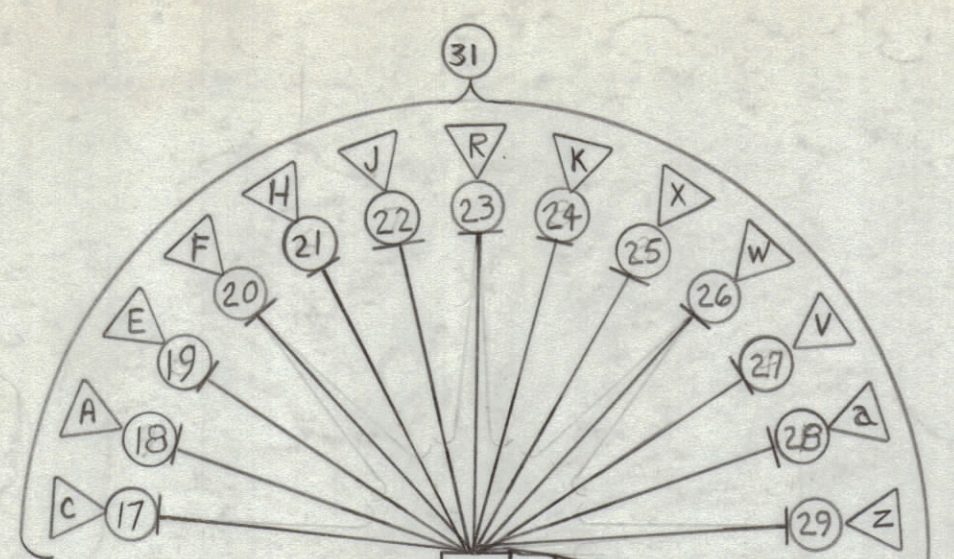


REVISIONS							
ZONE	SYM	DESCRIPTION	DATE	E.M.N. NO.	DRAFT	CHKD	APPD
X	1	CABLE SPECS ADDED	7-16-65		JC		
	2	ORIGINAL RELEASE FOR PRODUCTION	7-19-65		M.V.		



USE ITEM 33 FOR INSULATION ON ALL PINS

TMC P/N	"A"	"B"
CA1148-1	3 IN.	3 IN.

○ DENOTES ITEM No.
△ DENOTES PIN No.

UNLESS OTHERWISE SPECIFIED WIRES SHOULD BE PLACED IN CABLE IN NUMERICAL SEQUENCE AS THEY APPEAR IN ITEM COLUMN BY CATEGORY.

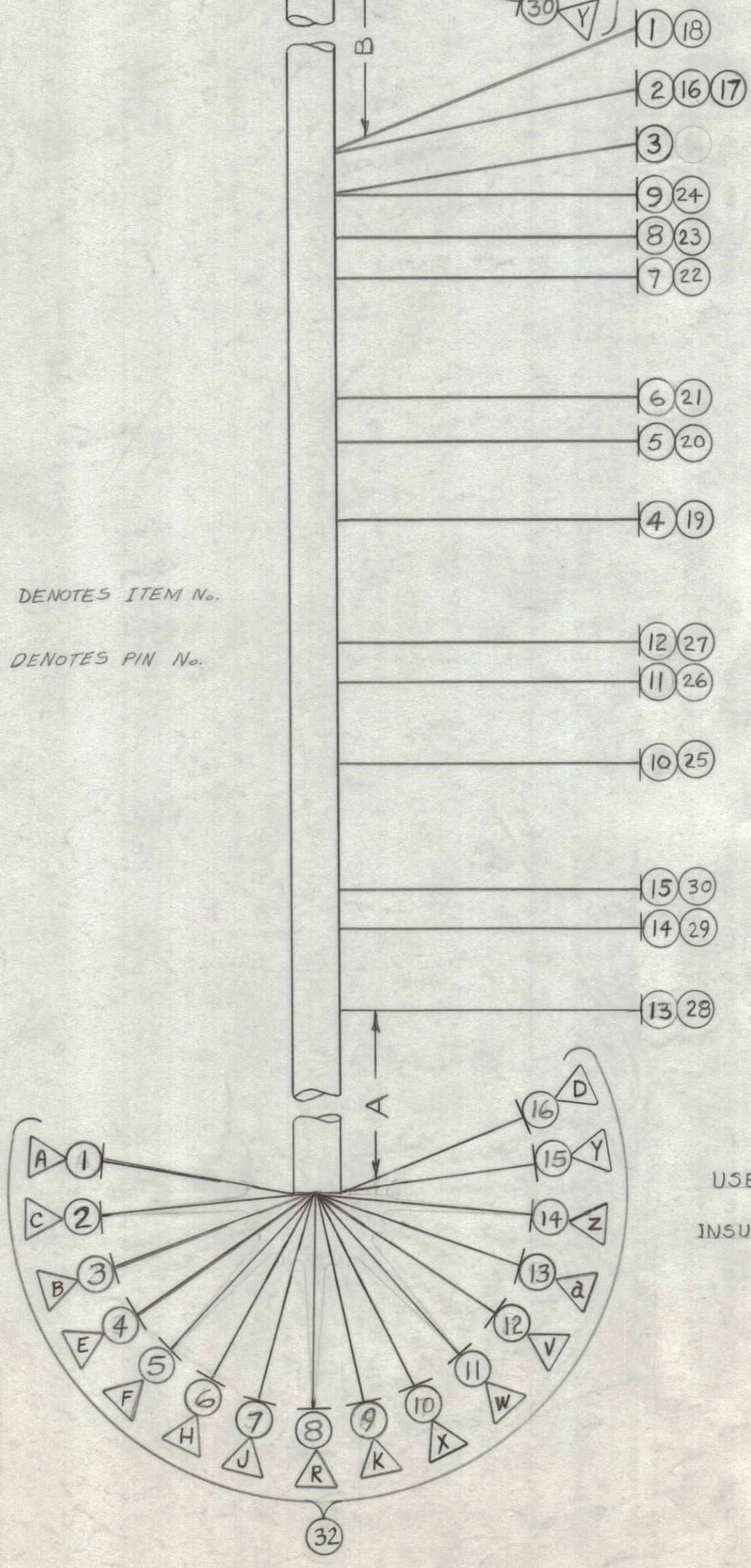
- ALL R.F. CABLES
- ALL SHIELDED CABLES
- ALL OTHERS

SPACE LACING APPROXIMATELY 3/4" APART.

THIS SYMBOL DENOTES END OF INSULATION AND NAIL DRIVING POINT. WIRE MUST BE STRIPPED 3/4" BEYOND THIS POINT AND TINNED 1/2" UNLESS OTHERWISE SPECIFIED.

REQ'D.	ITEM	PART NUMBER	DESCRIPTION	SYMBOL
X	36	BS100	SOLDER, SOFT TIN ALLOY	
X	35	TA100-1	INSULATION, TAPE, ELECT. PLASTIC	
X	34	CD101-1MW	CORD, LACING	
X	33	PX100-1-095	INSULATION, SLEEVING	
1	32	JJ200-3	CONNECTOR, RECEPTACLE, 24 PIN, FEMALE	
1	31	JJ200-4	CONNECTOR, RECEPTACLE, 24 PIN, MALE	
	30	MWC24(7)U90	WIRE, INSULATED	
	29		98	
	28		9	
	27		8	
	26		97	
	25		7	
	24		6	
	23		95	
	22		5	
	21		4	
	20		93	
	19		3	
	18		1	
	17		0	
	16		0	
	15		90	
	14		98	
	13		9	
	12		8	
	11		97	
	10		7	
	9		6	
	8		95	
	7		5	
	6		4	
	5		93	
	4		3	
	3		2	
	2		91	
	1	MWC24(7)U1	WIRE, INSULATED	

CA1148



USE ITEM 33 FOR INSULATION ON ALL PINS

STURMER LIST OF MATERIAL			
THE TECHNICAL MATERIEL CORP. MAMARONECK, NEW YORK			
TITLE: WIRING HARNESS, BR., AUD. FILT			
DRAWN	DATE	FINAL APPROVAL	DATE
<i>[Signature]</i>	6-11-65	<i>[Signature]</i>	7/16/65
CHECKED	DATE	DATE	
<i>[Signature]</i>	7-16-65	7-16-65	
ELECT. DES.	DATE	DATE	
<i>[Signature]</i>	7-16-65	7-16-65	
MECH. DES.	DATE	DATE	

Q'TY./UNIT	MODEL USED ON	ASS'Y. NO.
	DDR-5K	A4298
SCALE	CODE	

NOTES

THE CONTENTS OF THIS DRAWING ARE THE EXCLUSIVE PROPERTY OF THE TECHNICAL MATERIEL CORP. ITS UNAUTHORIZED USE OR REPRODUCTION IN WHOLE OR IN PART IS STRICTLY FORBIDDEN.