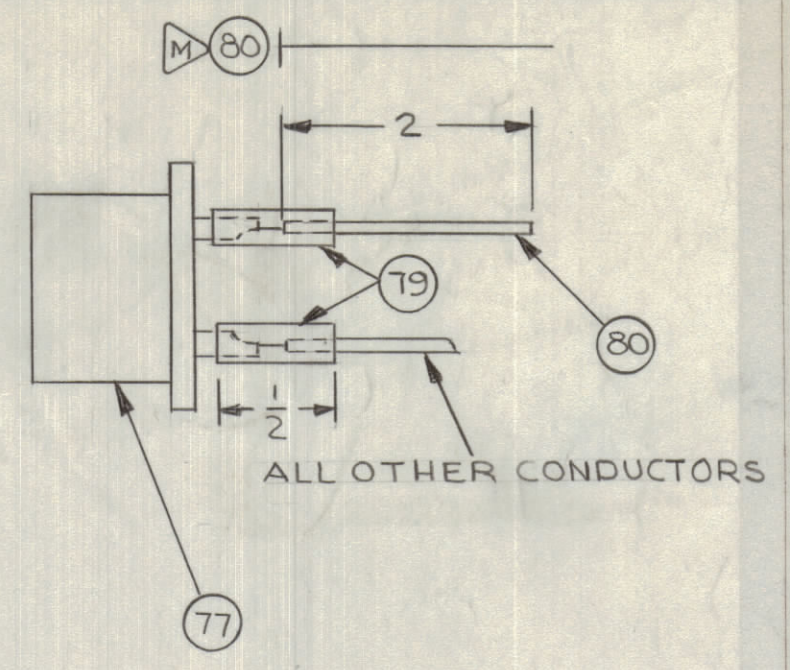
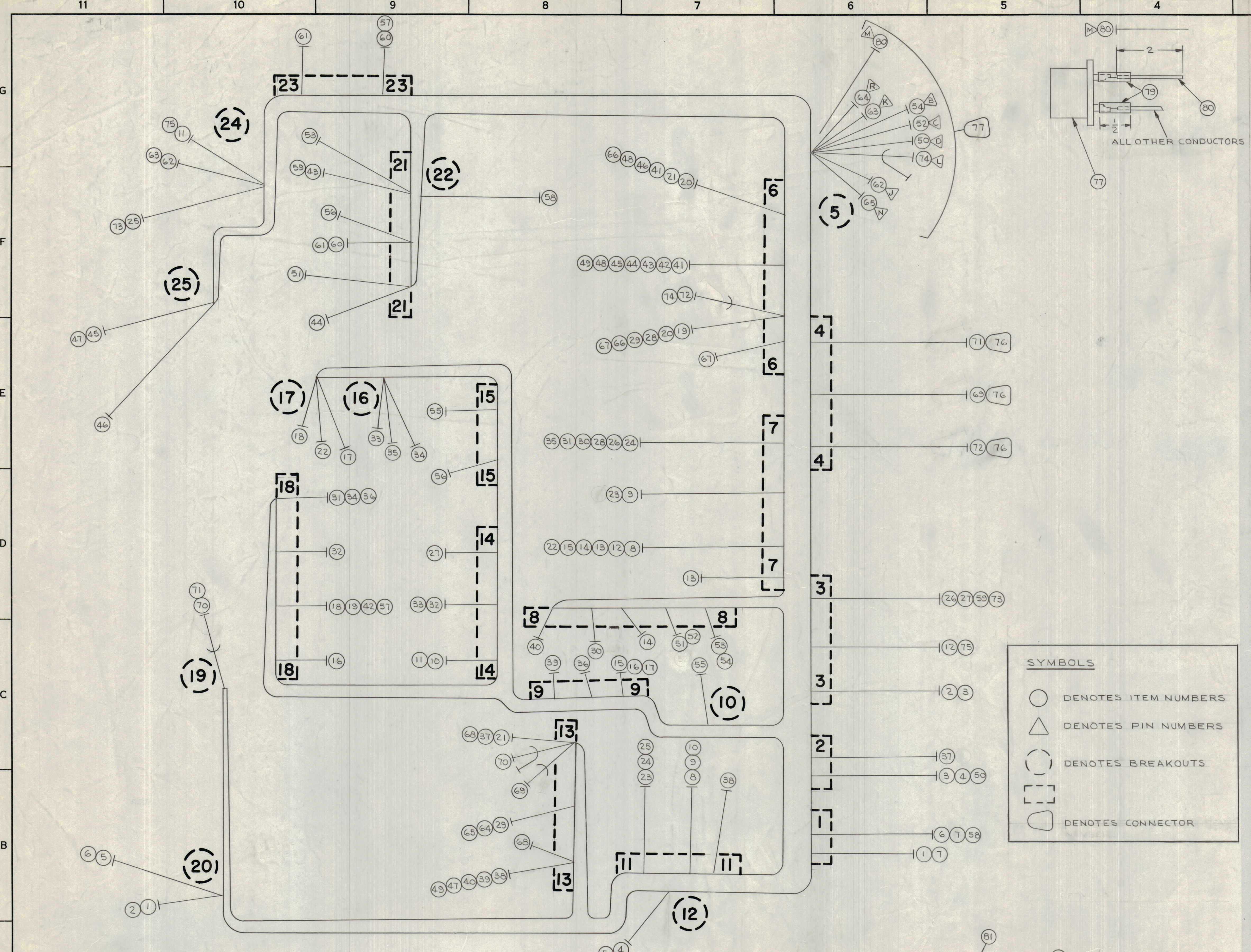


REVISIONS							
ZONE	SYM	DESCRIPTION	DATE	EM.N. NO.	DRAFT	CHKD	APPD
		ORIGINAL RELEASE FOR PRODUCTION	8/12/65				
A		IT 77 WRS JJ 200-2	8/16/65	14623			



ZONE	SYM	ITEM	PART NUMBER	FROM	DESCRIPTION	TO
	X	82	CD101-1MW		CORD, LACING	
	X	81	PX830-12-1		INSULATION, SLEEVING, SHRINK	
	X	80	MWC20(7)U0		WIRE, INSULATION, BLK	
	X	79	PX830-16-1		INSULATION, SLEEVING, SHRINK	
	X	78	BS100		SOLDER, SOFT	
	I	77	JJ172		CONNECTOR, RECEPTACLE, FEMALE, CONNECTOR, RECEPTACLE, RF, FEMALE	
	S	76	JJ172		CONNECTOR, RECEPTACLE, FEMALE, CONNECTOR, RECEPTACLE, RF, FEMALE	
24	3	75	MWC29(7)U97		S102-5	F102-1
6	5	74	MWC22(7)SJ93		J106-3	J102-L
24	3	73			S102-3	F103-1
6	4	72			J106-4	J103
19	4	71			S103-8	J105
13	19	70			J108-13	S103-9
4	13	69	MWC22(7)SJ94		J104	J108-15
13	13	68	MWC20(7)U0		J108-14	GND LUG-J108
6	6	67			J106-2	GND LUG-J106
6	6	66			J106-2	J106-15
13	5	65			J108-8	J102-N
13	5	64			J108-9	J102-R
24	5	63			S102-8	J102-K
24	5	62			S102-9	J102-J
23	21	61			C113-(+)	K105-3
23	21	60			C113-(-)	K105-1
21	3	59			K103-2	F103-2
22	1	58			K103-11	T101-4
18	23	57			C113-(-)	C106(-)
21	15	56			R136-2	CR115-2
10	15	55			R136-1	CR115-1
8	5	54			R136-1	J102-B
21	8	53			K103-10	R136-1
8	5	52			R137-1	J102-C
21	8	51			K104-10	R137-1
5	2	50			J102-D	T101-2
6	13	49			J106-8	J108-4
6	6	48			J106-8	J106-13
25	13	47			DS102-2	J108-1
25	6	46			J106-12	DS103-1
6	25	45			J106-6	DS102-1
6	21	44			J106-10	K104-4
6	21	43			J106-9	K103-4
18	6	42			C106-(-)	J108-7
6	6	41			J106-11	J108-7
13	9	40			J108-1	R139-1
13	9	39			J108-2	R139-2
11	13	38			T101-12	J108-5
2	13	37			T101-11	J108-11
9	18	36			R105-2	C110-(-)
16	7	35			Q102-B	J107-13
18	16	34			C110-(-)	Q102-C
14	16	33			C106(+)	Q102-E
18	14	32			C107-(-)	C106(+)
18	7	31			C110-(-)	J107-14
7	8	30			J107-12	R105-1
6	13	29			J106-5	J108-10
6	7	28			J106-5	J107-11
3	14	27			F103-2	C107-(+)
3	7	26			F103-2	J107-11
11	24	25			T101-6	S102-2
11	7	24			T101-10	J107-15
7	11	23			J107-3	T101-7
6	13	22			J106-14	Q101-B
6	6	21			J106-1	J108-12
18	6	19			C106-(-)	J106-14
17	18	18			Q101-E	J106-1
9	17	17			R102-2	Q101-C
9	18	16			R102-2	C103-(-)
9	7	15			R102-2	J107-2
7	8	14			J107-4	R102-1
7	7	13			J107-5	GND LUG J107
7	3	12			J107-5	F102-2
14	24	11			C103(+)	S102-6
11	14	10			T101-9	C103(+)
7	11	9			J107-6	T101-8
7	11	8			J107-1	T101-10
1	1	7			T101-4	T101-10
20	1	6			DS101-2	J101-4
12	20	5			R101-2	DS101-1
2	12	4			T101-2	R101-1
3	2	3			F101-2	T101-1
20	3	2			S101-2	F101-1
1	20	1			J101-A	S101-1

SYMBOLS

- DENOTES ITEM NUMBERS
- △ DENOTES PIN NUMBERS
- DENOTES BREAKOUTS
- DENOTES CONNECTOR

UNLESS OTHERWISE SPECIFIED WIRES SHOULD BE PLACED IN CABLE IN NUMERICAL SEQUENCE AS THEY APPEAR IN ITEM COLUMN BY CATEGORY.

- ALL R.F. CABLES
- ALL SHIELDED CABLES
- ALL OTHERS

SPACE LACING APPROXIMATELY 3/4" APART.

THIS SYMBOL DENOTES END OF INSULATION AND NAIL DRIVING POINT. WIRE MUST BE STRIPPED 3/4" BEYOND THIS POINT AND TINNED 1/2" UNLESS OTHERWISE SPECIFIED.

THIS SYMBOL INDICATES END OF SHIELDING.

THE ABOVE SYMBOL DENOTES END OF SHIELD, WHICH SHOULD BE TERMINATED AS SHOWN, CUTTING PIGTAIL BACK TO 1/4" IN LENGTH & SOLDERING 2" OF ITEM 81 TO END. SLIP 1/2" OF ITEM 81 OVER CONNECTION & HEAT.

NOTES

QTY/UNIT	RGCB-1	MODEL USED ON	ASSY. NO.
SCALE	1/1		

UNLESS OTHERWISE SPECIFIED DIMENSIONS ARE IN INCHES AND INCLUDE CHEMICALLY APPLIED OR PLATED FINISHES

DECIMALS	TOLERANCES	FRACTIONS
.x ± .05	± 1/64	
.xx ± .01	ANGLES	± 0' 30"
.xxx ± .005		

LIST OF MATERIAL

THE TECHNICAL MATERIEL CORP.
MAMARONECK, NEW YORK

WIRING HARNESS, BRANCHED

DRAWN: J. LESHINSKI, DATE: 8/11/65, FINAL APPROVAL: [Signature], DATE: 8/19/65

CHECKED: [Signature], DATE: 8/11/65

ELECT. DES. DATE: [Signature]

MECH. DES. DATE: [Signature]

SHEET: 4

REV. LTR. REV. NO. 400

CA1142 A