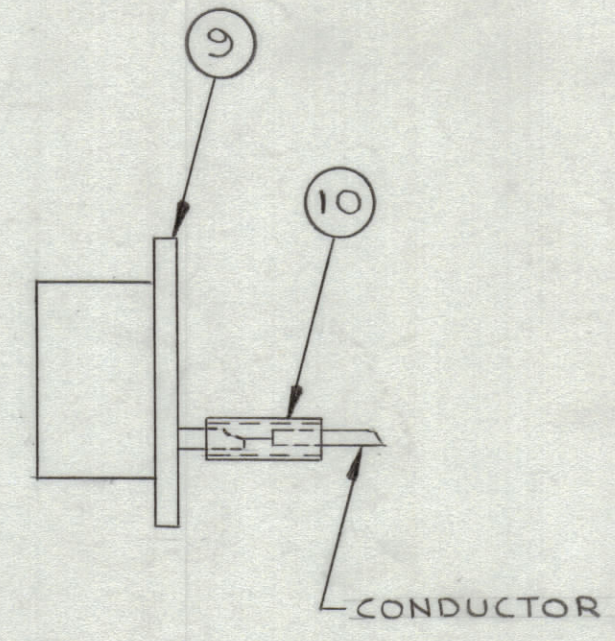
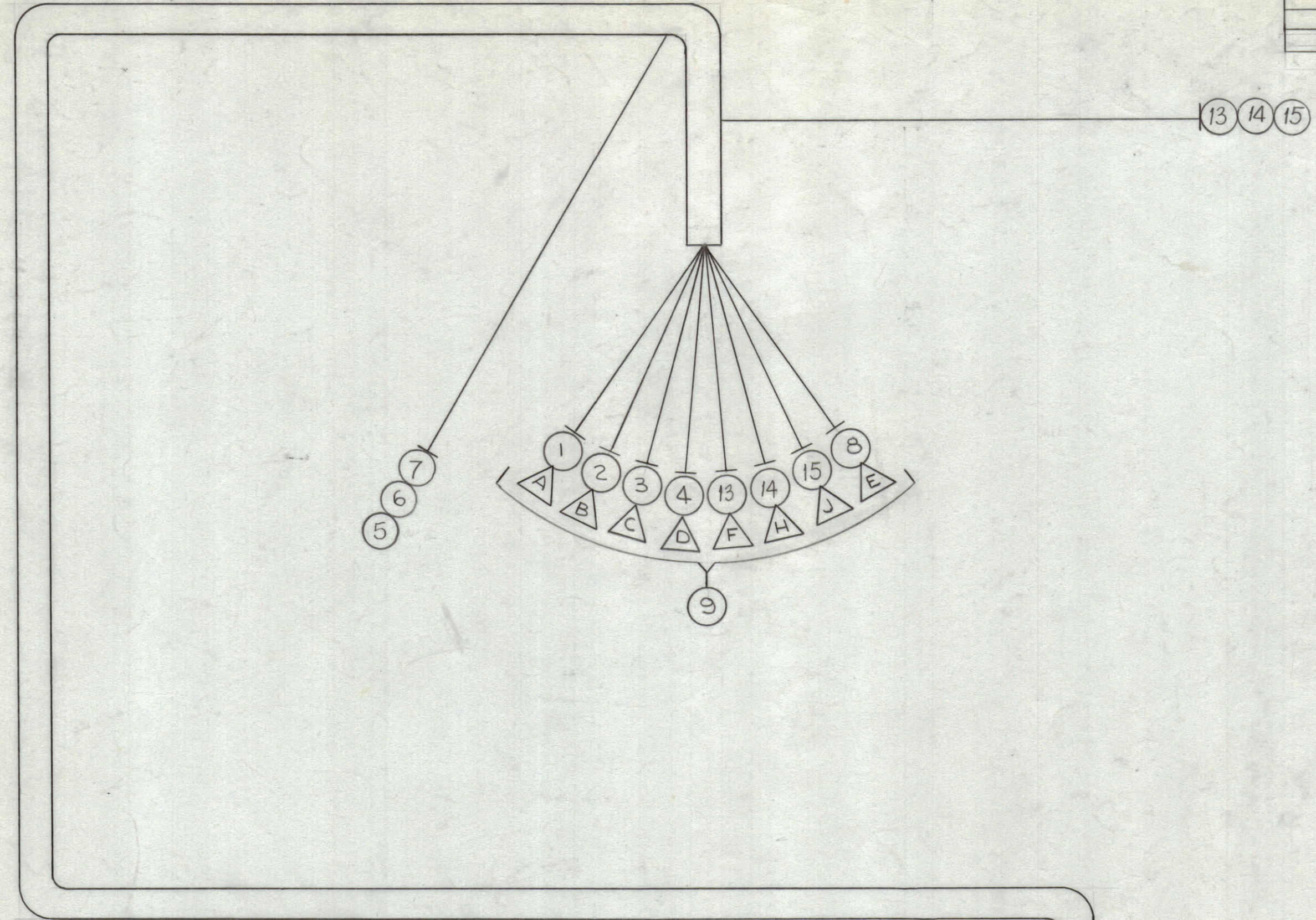


REVISIONS						
ZONE	SYM	DESCRIPTION	DATE	E.M.N. NO.	DRAFT	CHKD APPD
	Ø	ORIGINAL RELEASE FOR PRODUCTION	5/25/65	—	JL	
	A	IT. 13,14+15 ADDED	3/21/66	15936	WHD	JL
	B	CLERICAL CHANGE (IT. 5, 6, 7)	5-24-66	16271	C.H.	JL



— SYMBOLS —
 ○ DENOTES ITEM NUMBERS
 △ DENOTES PIN NUMBERS

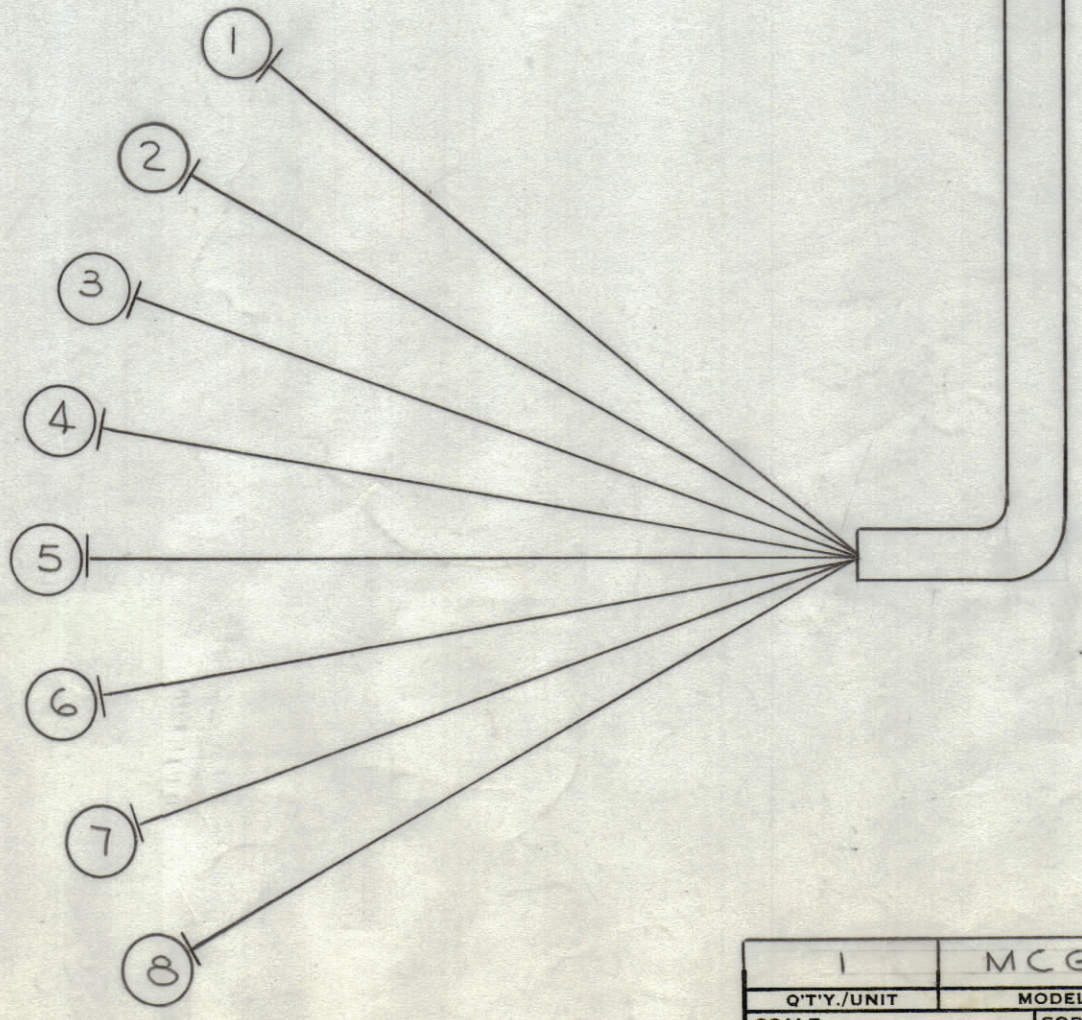
CA1123 B

THIS SYMBOL DENOTES END OF INSULATION AND NAIL DRIVING POINT. WIRE MUST BE STRIPPED 3/4" BEYOND THIS POINT AND TINNED 1/2" UNLESS OTHERWISE SPECIFIED.

UNLESS OTHERWISE SPECIFIED WIRES SHOULD BE PLACED IN CABLE IN NUMERICAL SEQUENCE AS THEY APPEAR IN ITEM COLUMN BY CATEGORY.

- ALL R.F. CABLES
- ALL SHIELDED CABLES
- ALL OTHERS

SPACE LACING APPROXIMATELY 3/4" APART.



REQ'D.	ITEM	PART NUMBER	FROM	DESCRIPTION	TO	SYMBOL
	9"	15	MCW22(7)U6	J6016-J	CR6004	
	9"	14	MCW22(7)U9	J6016-H	CR6005	
	9"	13	MCW22(7)U5	J6016-F	CR6006	
X	12	CD101-MW		CORD, LACING		
X	11	BS100		SOLDER, SOFT		
X	10	PX830-16-1		SHRINK TUBING		
1	9	JJ200-7		JACK, MALE, 11P		J6016
37-1/2	8	MWC22 (7) U0		J6016-E	LEDEX PIN 1	
	7			S1001-2	CR6005	
	6			S1001-3	CR6006	
	5			S1001-4	CR6007	
	4			J6016-D	S6001-C-9	
	3			J6016-C	S6001-C-11	
	2			J6016-B	S6001-C-12	
37-1/2	1	MWC22 (7) U7		J6016-A	S6001-C-10	

EATON		LIST OF MATERIAL	
MATERIAL	— # —	THE TECHNICAL MATERIEL CORP. MAMARONECK, NEW YORK	
FINISH	— # —	TITLE WIRING HARNESS	
UNLESS OTHERWISE SPECIFIED DIMENSIONS ARE IN INCHES AND INCLUDE CHEMICALLY APPLIED OR PLATED FINISHES	DRAWN J. LESHINSKI	DATE 5/24/65	FINAL APPROVAL [Signature]
DECIMALS .X ± .05 .XX ± .01 .XXX ± .005	CHECKED [Signature]	DATE 5/25/65	DATE 5/1/65
FRACTIONS ± 1/64 ANGLES ± 0° 30'	ELECT. DES. [Signature]	DATE 5-27-65	CA1123 B
TOLERANCES	MECH. DES. [Signature]	DATE	REV. LTR.

1 MCGA-1		
Q'TY./UNIT	MODEL USED ON	ASS'Y. NO.
SCALE 1/1	CODE	
THE CONTENTS OF THIS DRAWING ARE THE EXCLUSIVE PROPERTY OF THE TECHNICAL MATERIEL CORP. ITS UNAUTHORIZED USE OR REPRODUCTION IN WHOLE OR IN PART IS STRICTLY FORBIDDEN.		

NOTES