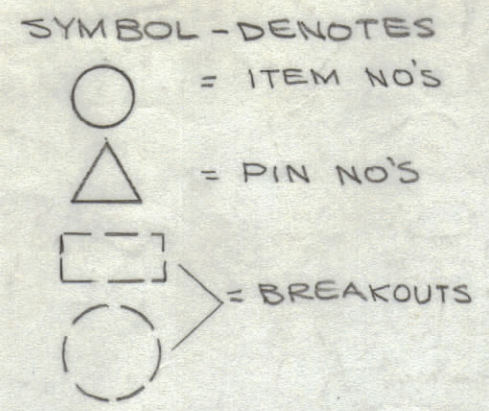
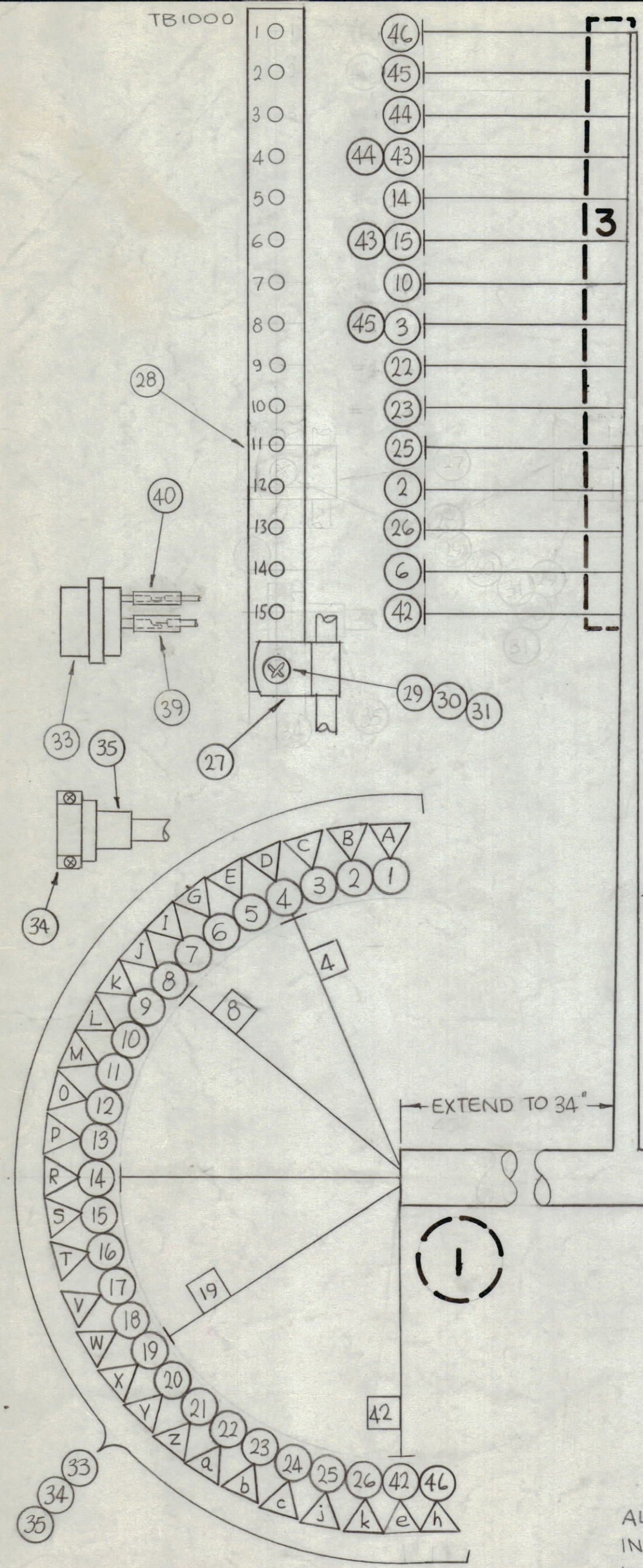
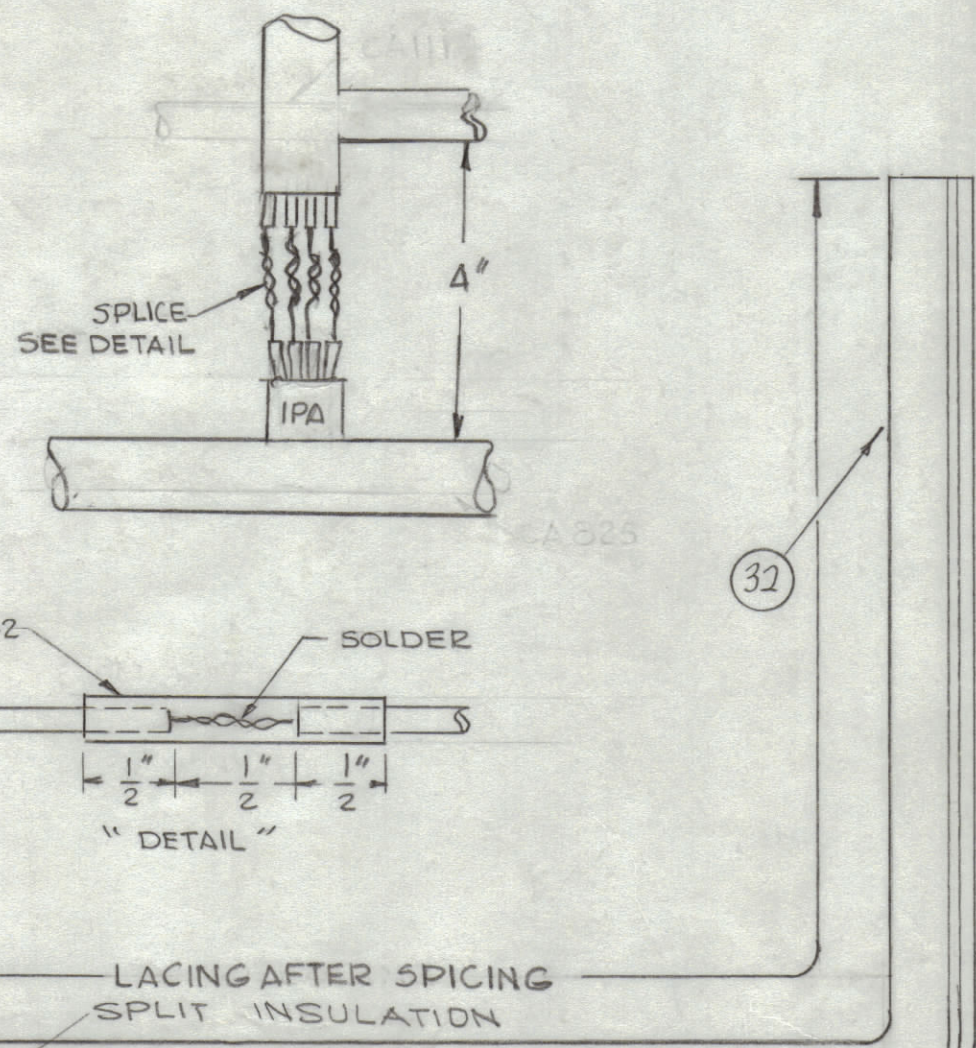


REVISIONS							
ZONE	SYM	DESCRIPTION	DATE	E.M.N. NO.	DRAFT	CHKD	APPD
X1		ITEM 19 WAS UT, EXT. WAS 45", INSULATION SPLIT	5-12-65	X1	SEG	WA	aa
X2		NOTE & ITEM 41 ADDED	6-11-65	X2	GDL	CP	
X3		ITEM 42 ADDED, 2 MARKERS ADDED	6-25-65	X3	HP	da	aa
X4		ITEM 28 WAS 12 PIN, IT 43-46 ADDED, TB1000 RE-ARRANGED	8-3-65	X4	HP		
D		ORIGINAL RELEASE FOR PRODUCTION	3-14-66	D	HCA		file



NOTE:
 THIS CABLE IS TO BE SPLICED ONTO CA 825. IT IS SPLICED ON AFTER REMOVING THE IPA PLUG. ON CA 825 THE # 22 VIOLET; # 22 WHITE/BROWN; # 22 WHITE/BLACK; # 22 RED SHIELD AND # 16 BLACK WIRES ARE TO BE CUT BACK AND TAPED WITH TA100-2. THE # 20 GREEN WIRE REMOVED FROM PIN D SHOULD BE SPLICED TO THE GREEN WIRE WITH TAG # 4 ATTACHED. THE # 22 GREEN WIRE REMOVED FROM PIN J SHOULD BE SPLICED TO THE GREEN WIRE WITH TAG # 8 ATTACHED. THE REST OF THE WIRES SHOULD MATCH AS TO COLOR AND SIZE. THE SPLICES ARE TO BE STAGGERED AS WELL AS POSSIBLE.



ALL WIRES SHOULD BE PLACED IN HARNESS AS THEY APPEAR IN ITEM COLUMN BY CATEGORY.
 1~ ALL RF CABLES
 2~ ALL SHIELDED CABLES
 3~ ALL OTHERS
 SPACE LACING APPROXIMATELY 3/4" APART.



THIS SYMBOL DENOTES END OF INSULATION AND NAIL DRIVING POINT. WIRE MUST BE STRIPPED 3/4" BEYOND THIS POINT AND TINNED 1/2" UNLESS OTHERWISE SPECIFIED.

QTY.	ZONE	SYM	ITEM	PART NUMBER	DESCRIPTION	FROM	TO	SYMBOL
1	3		46	MWC20(7)U97	TB1000 #1		PI010 PIN h	
3	3		45	U97	TB1000 #2		TB1000 #8	
3	3		44	U8	TB1000 #3		TB1000 #4	
3	3		43	MWC20(7)U8	TB1000 #4		TB1000 #6	
1	3		42	MWC22(7)U97	PI010 PIN E		TB1000 TERM.#15	
		6	41	LA101	BAND MARKER, CBI			
		X	40	PX100-1-095	INSULATION SLEEVING			
		X	39	PX100-1-133	INSULATION SLEEVING			
		X	38	BS100	SOLDER, TIN ALLOY			
		X	37	CD101-1MW	CORD, LA CING			
		X	36	PX-100-1-375	INSULATION SLEEVING			
		1	35	MS3420-18	BUSHING RUBBER			
		1	34	MS3057-18	CLAMP CABLE ELEC. COM.			
		1	33	MS3106B32-75	CON. PLUG FEM.			
		X	32	PX-100-1-625	INSULATION SLEEVING			
		1	31	NTH0632BN8	NUT HEX			
		1	30	LWS06MRN	WASH. LK, SPLIT			
		1	29	SCBP0632BN6	SCREW MACHINE			
		1	28	TM-105-15AL	TERMINAL BOARD FANNING TYPE			
		1	27	CU102-3	CLAMP, LOOP			
1	3		26	MWC22(7)U93	PI010 PIN k		TB1000 TERM.#13	
1	3		25	MWC22(7)U96	PI010 PIN j		TB1000 TERM.#11	
1	2		24	MWC16(19)U6	PI000 PIN A			
1	3		23	MWC20(7)U0	b		TB1000 TERM.#10	
1	3		22	MWC20(7)U1	a		TB1000 TERM.#9	
1	2		21	MWC22(7)U93	Z		S1009 COM.	
1	2		20	MWC22(7)U6	Y		S1009 N.O.	
1	2		19	MWC20(7)U97	X		CB1002 (Wh/Viol)	
1	2		18	MWC22(7)U2	W		J1000 PIN W	
1	2		17	MWC16(19)U7	V		CB1000 (Viol)	
1	2		16	MWC16(19)U8	T		CB1000 (Grey)	
1	3		15	MWC20(7)U8	S		TB1000 TERM.#6	
1	3		14	MWC20(7)U9	R		TB1000 TERM.#5	
1	2		13	MWC16(7)U9	P		CB1000 (White)	
1	2		12	MWC20(7)U4	O		T801 TERM.#3	
1	2		11	MWC22(7)U3	M		PI000 PIN M	
1	3		10	MWC20(7)U7	L		TB1000 TERM.#7	
1	2		9	MWC22(7)U95	K		PI000 PIN D	
1	2		8	MWC22(7)U5	J		PI000 PIN C	
1	2		7	MWC22(7)U92	I		S1018	
1	3		6	MWC22(7)U91	G		TB1000 TERM.#14	
1	2		5	MWC22(7)U94	E		PI000 PIN S	
1	2		4	MWC20(7)U5	D		J1000 PIN J	
1	3		3	MWC20(7)U97	C		TB1000 TERM.#8	
1	3		2	MWC22(7)U90	B		TB1000 TERM.#12	
1	2		1	MWC22(7)U98	PI010 PIN A		S1001 POSITION 2	

FROM TO	REQ'D.	ITEM	PART NUMBER	FROM	TO	SYMBOL
BREAKOUTS			F. BUDETTI			

MATERIAL		THE TECHNICAL MATERIEL CORP.	
FINISH		MAMARONECK, NEW YORK	
TITLE		WIRING HARNESS, BRANCHED	
UNLESS OTHERWISE SPECIFIED DIMENSIONS ARE IN INCHES AND INCLUDE CHEMICALLY APPLIED OR PLATED FINISHES	DRAWN SRG	DATE 4-30-65	FINAL APPROVAL
	CHECKED JTB	DATE 3-9-66	
	ELECT. DES. aa	DATE 3-10-66	
	MECH. DES.	DATE	

TSTE-10K		ASS'Y. NO.	
QTY./UNIT	MODEL USED ON	CODE	
SCALE 1:1		A	

THE CONTENTS OF THIS DRAWING ARE THE EXCLUSIVE PROPERTY OF THE TECHNICAL MATERIEL CORP. ITS UNAUTHORIZED USE OR REPRODUCTION IN WHOLE OR IN PART IS STRICTLY FORBIDDEN.

DECIMALS	FRACTIONS	TOLERANCES	ANGLES
X ± .05	± 1/64		± 0° 30'
XX ± .01			
XXX ± .005			