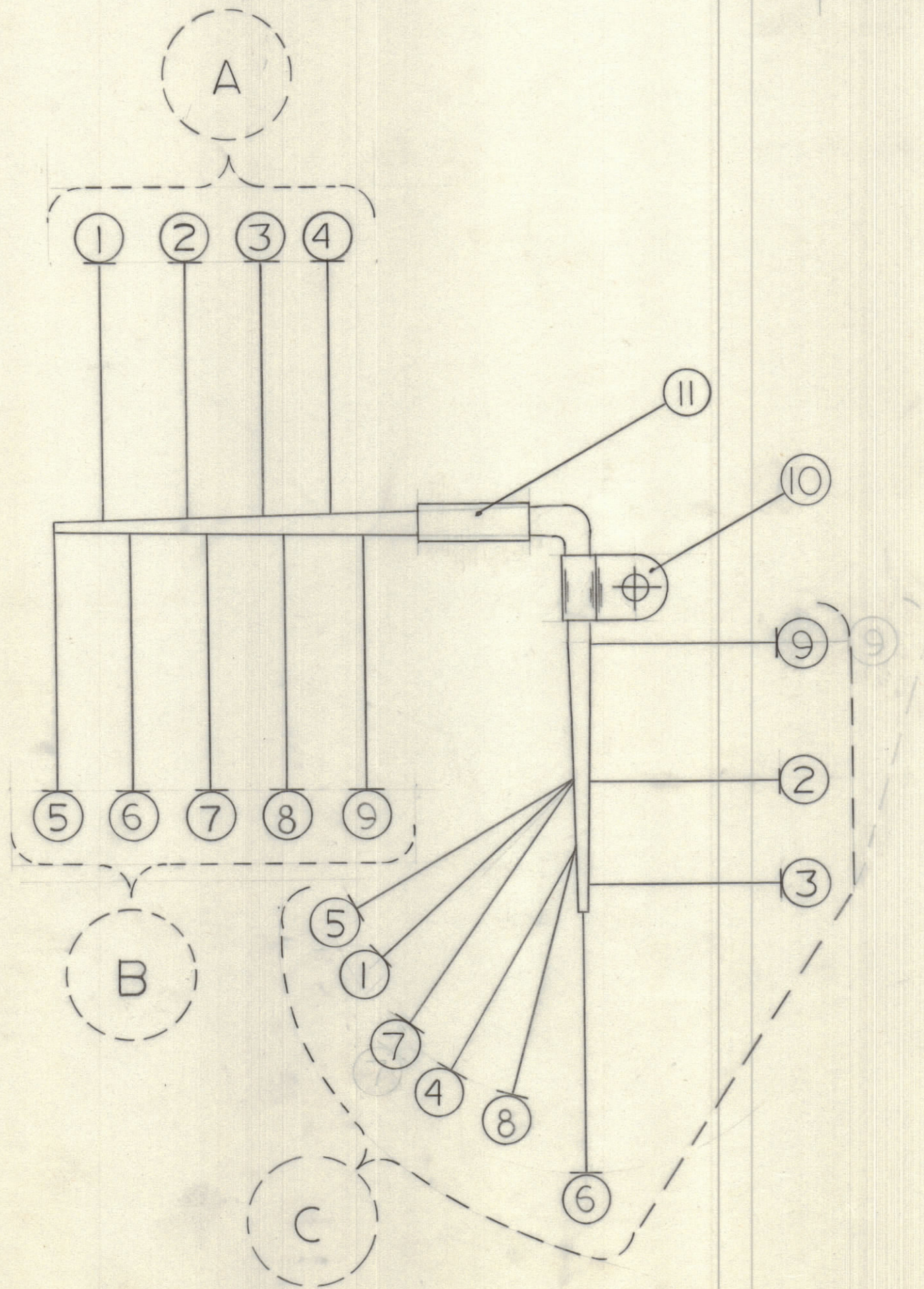


IF IT IS FOUND DESIRABLE TO CHANGE ANY TOLERANCE OR OTHER DETAIL SPECIFIED ON THIS DRAWING NOTIFY THE PURCHASER PROMPTLY.		DIMENSIONS IN INCHES UNLESS OTHERWISE SPECIFIED	
MAXIMUM ALLOWABLE TOLERANCES HAVE BEEN DETERMINED AND DEVIATIONS WILL BE CAUSE FOR REJECTION. REMOVE ALL BURRS AND SHARP EDGES.			
ISSUE	ITEM	CHANGED FROM	DATE
Φ		PRODUCTION RELEASE	APRIL 1st 71
CH. NO.	DRAFTS	CHECKER	ENG. APP.
	G.C.T.		

B' OUT	FROM	B' OUT	TO	REQ.	ITEM	PART NO.	DESCRIPTION	SYMBOL
A	FRONT PANEL +15	C	LPF/OP AMP. F		1	MWC 22(7)-2	WIRE ELECT. INSUL.	
A	↑ ↑ +6	C	PROD. DET. E		2	-92	↑ ↑ ↑	
A	↑ -6	C	PROD. DET. M		3	-93		
A	↑ -15	C	LPF/OP AMP. L		4	-9		
B	I OUT	C	LPF/OP AMP D		5	-3		
B	Q OUT	C	LPF/OP AMP N		6	-6		
B	AMPLITUDE	C	GAIN AGC N		7	-5		
B	↓ ↓ AGC	C	LPF/OP AMP K		8	-96	↓ ↓ ↓	
B	FRONT PANEL GND				9	MWC 22(7)-0	WIRE ELECT. INSUL.	
					10	CU102-3	CLAMP "G" TYPE	
					11	PX100-9-234	SLEEVING MARKED CA10644 C/W LATEST REV. LETTER	



CA10644 Φ

NOTE :-

THIS SYMBOL DENOTES END OF INSULATION AND NAIL DRIVING POINT. WIRE MUST BE STRIPPED 1/2" BEYOND THIS POINT AND TINNED 1/4" UNLESS OTHERWISE SPECIFIED.

TOLERANCES		SCALE: 1/1
ALL OTHERS	DEC. DIM. ± .X*.05 FRAC. DIM. ± 1/64 ANGULAR DIM. ± 0° 30'	DRILL, PUNCH, COMMERCIAL STOCK SIZES AND MANUFACTURERS TOLERANCES ARE NOT INCLUDED.

HF/DF	36203	1 APRIL 71
MODEL	PROJECT NO.	DATE

STOCK SIZE		TMC (Canada) LIMITED OTTAWA ONTARIO	
MATERIAL		HF DF RECEIVER CABLE ASSY FRONT PANEL TEST POINTS.	
WEIGHT PER PC.		G.C. THOMPSON	
TYPE & TEMPER.		DRAWN	
HEAT TREAT. SPEC.		CHECKED	
FINISH & SPEC. NO.		FINAL APPROVAL	
		CA 10644 Φ	