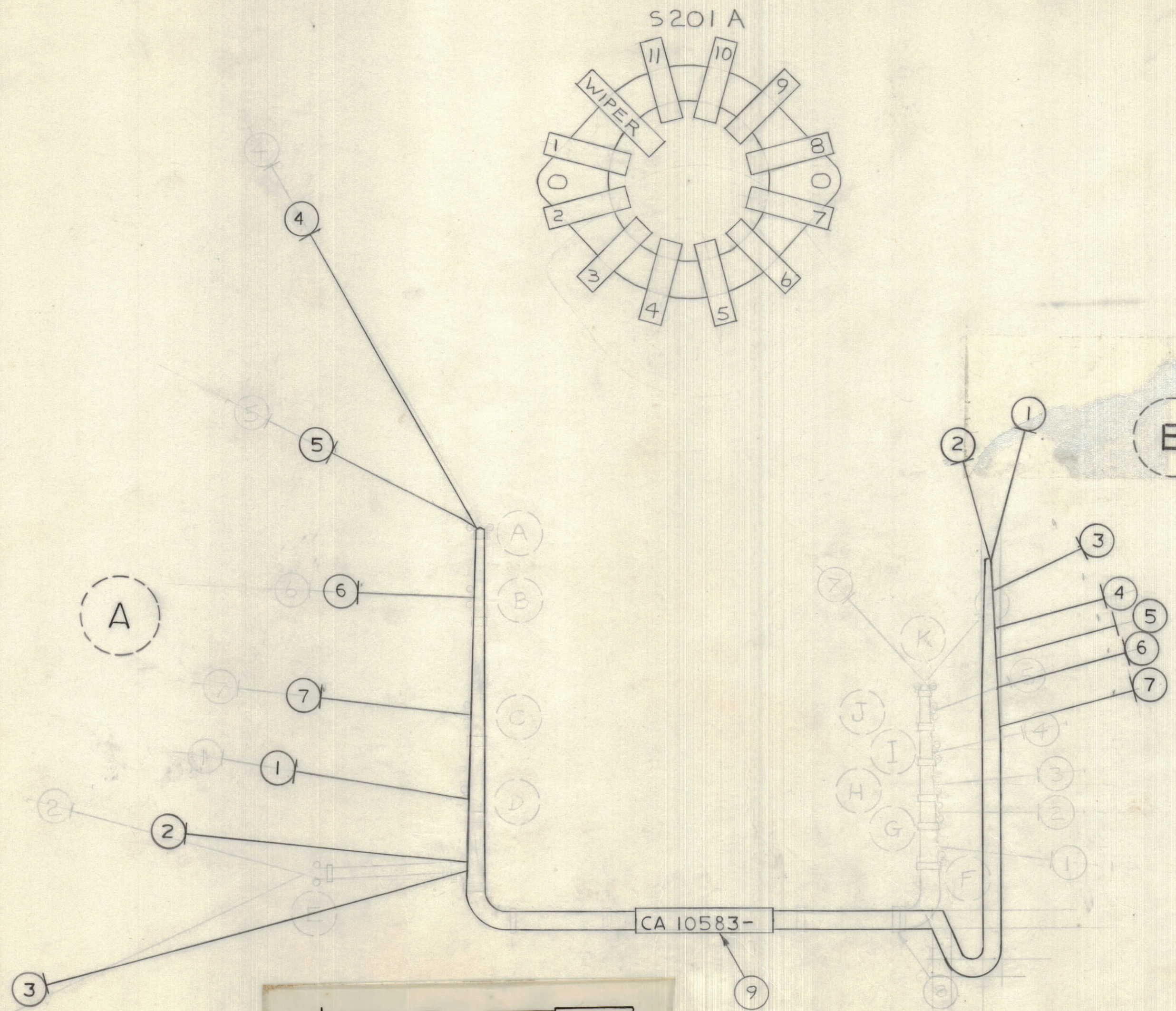


IF IT IS FOUND DESIRABLE TO CHANGE ANY TOLERANCE OR OTHER DETAIL SPECIFIED ON THIS DRAWING NOTIFY THE PURCHASER PROMPTLY.				DIMENSIONS IN INCHES UNLESS OTHERWISE SPECIFIED			
MAXIMUM ALLOWABLE TOLERANCES HAVE BEEN DETERMINED AND DEVIATIONS WILL BE CAUSE FOR REJECTION. REMOVE ALL BURRS AND SHARP EDGES.							
ISSUE	ITEM	CHANGED FROM	DATE	CN. NO.	DRAFTS	CHECKER	ENG. APP.
X		ENG. RELEASE	DEC 4/69		DGW	DP	
X <sub>1</sub>		DWG N <sup>o</sup> WAS CA 10588	5 JAN 70		PS		
X <sub>2</sub>		RE-LAYED OUT TO SUIT REPOSITION OF TB201	12 JAN 70		PW		

BREAK OUT	FROM COMPONENT	BREAK OUT	TO COMPONENT	REQ.	ITEM	PART NO.	DESCRIPTION	SYMBOL
B	TB 201-1	A	S201A-1		1	MWC20(7)U1	WIRE, ELECTRICAL INSUL.	
B	TB 201-2	A	S201A-3		2	U2		
B	TB 201-3	A	S201A-5		3	U3		
B	TB 201-4	A	S201A-7		4	U4		
B	TB 201-5	A	S201A-9		5	U5		
B	TB 201-6	A	S201A-11		6	U6		
B	TB 201-7	A	S201A-WIPER		7	MWC20(7)U7	WIRE, ELECTRICAL INSUL.	
				23	8	CUI42-8	STRAP, CABLE	
				1	9	PX100-9-208	SLEEVING MARKED CA10588 C/W LATEST REVISION LETTER	

NOTE.  
LAY UP IN REVERSE ORDER. I.E.  
ITEM 7 TO BE LAID FIRST



CA 10583 X<sub>2</sub>

THIS SYMBOL DENOTES END OF INSULATION AND NAIL DRIVING POINT. WIRE MUST BE STRIPPED 1/2 BEYOND THIS POINT AND TINNED 1/4 UNLESS OTHERWISE SPECIFIED.

TOLERANCES		SCALE: 1:1
ALL OTHERS	DEC. DIM. ± 1/64 FRAC. DIM. ± 1/64 ANGULAR DIM. ± 0° 30'	.X+.06 .XX+.01 .XXX+.005
DRILL, PUNCH, COMMERCIAL STOCK SIZES AND MANUFACTURERS TOLERANCES ARE NOT INCLUDED.		

TU-2(CAN-1)	089/69		4 DEC. '69
MODEL	PROJECT NO.	ASSY. NO.	DATE
USED ON			

TMC (Canada) LIMITED OTTAWA ONTARIO			
CABLE ASSEMBLY.			
MATERIAL	WEIGHT PER PC.	TU-2 (CAN-1)	
TYPE & TEMPER	D G WILSON		
	DRAWN	ELEC. DES. APP.	MECH. DES. APP.
	d. Proctor		
HEAT TREAT. SPEC.	CHECKED	FINAL APPROVAL	
		CA 10583 X <sub>2</sub>	
FINISH & SPEC. NO.			