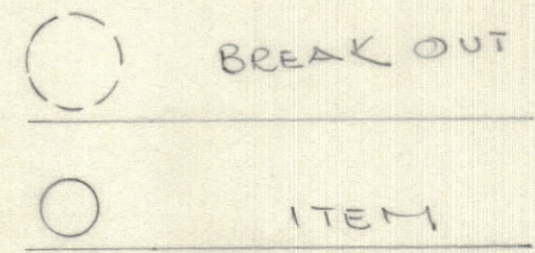
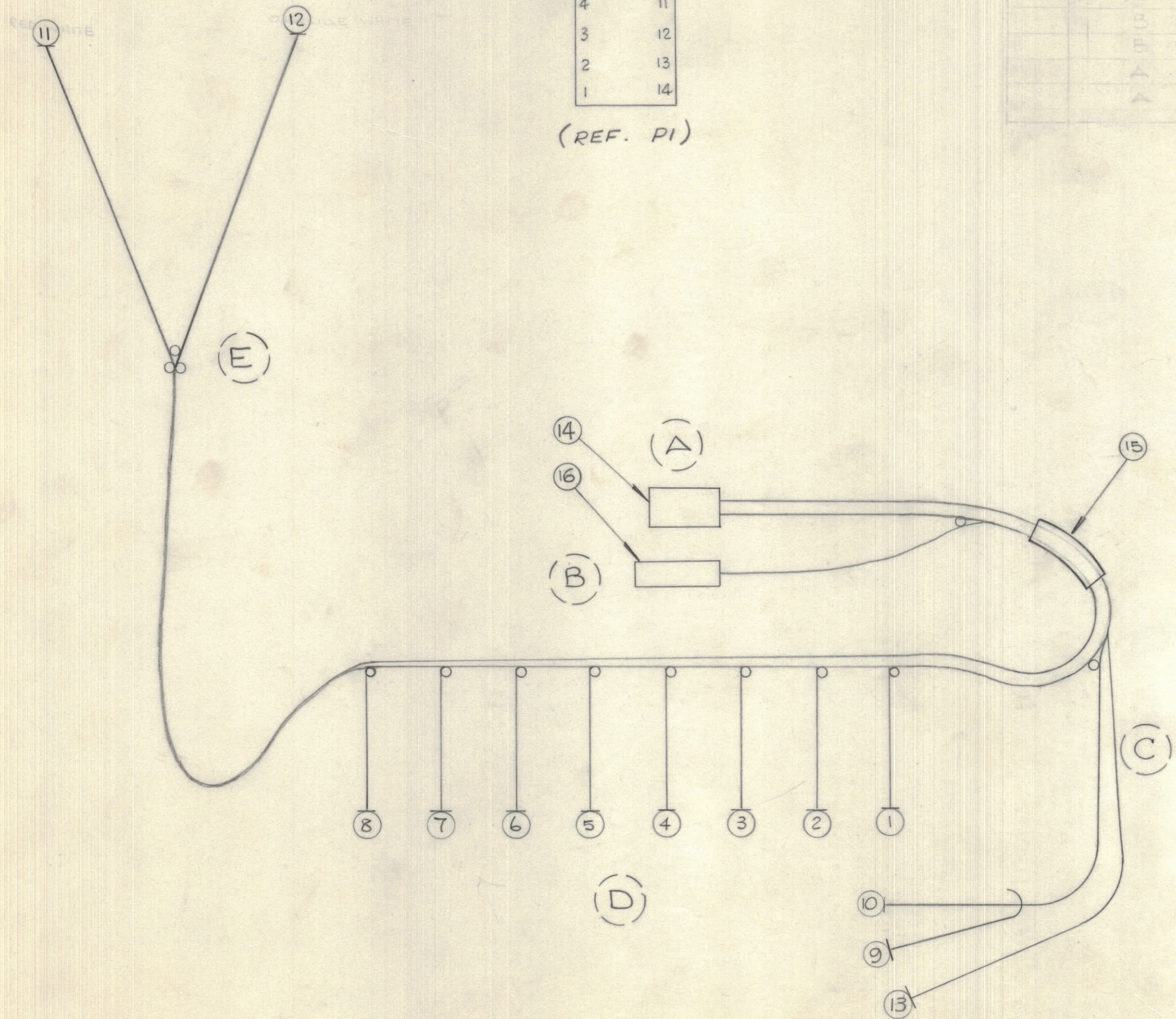
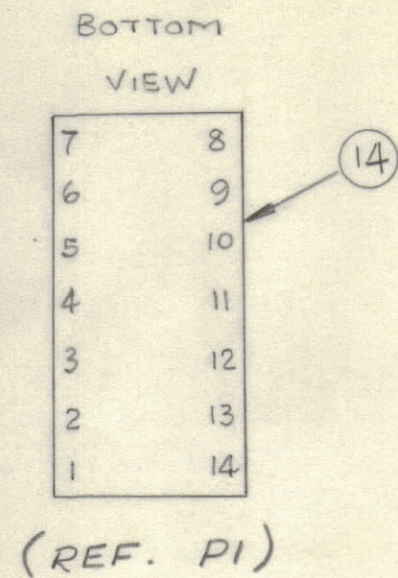


IF IT IS FOUND DESIRABLE TO CHANGE ANY TOLERANCE OR OTHER DETAIL SPECIFIED ON THIS DRAWING NOTIFY THE PURCHASER PROMPTLY.				DIMENSIONS IN INCHES UNLESS OTHERWISE SPECIFIED			
MAXIMUM ALLOWABLE TOLERANCES HAVE BEEN DETERMINED AND DEVIATIONS WILL BE CAUSE FOR REJECTION. REMOVE ALL BURRS AND SHARP EDGES.							
ISSUE	ITEM	CHANGED FROM	DATE	CH. NO.	DRAFTS	CHECKER	ENG. APP.
X		ENG REL	21/59		AHa		
X1		NEW ITEM 13 ADDED ITEM 16 WAS ITEM 13	15 DEC 69		PW		
X2		ITEMS 10 & 13 TO WAS MB J9 PIN 1 ITEM 9 TO WAS MB J9 PIN 3	17 DEC 69		PW		

BREAK OUT	FROM	BREAK OUT	TO	REQ.	ITEM	PART NO.	DESCRIPTION	SYMBOL
A	P1 PIN # 6	D	MB (TRANS)#2	1		LW-C-24-7-J-1	WIRE ELECT.	
A	7	D		4	2		WIRE ELECT.	
A	8	D		6	3		WIRE ELECT.	
A	9	D		8	4		WIRE ELECT.	
A	10	D		10	5		WIRE ELECT.	
A	11	D		12	6		WIRE ELECT.	
A	12	D		14	7		WIRE ELECT.	
A	13	D		16	8		WIRE ELECT.	
B	P2 COND.	C	MB PIN 19	9		RG/174U		
B	P2 SCREENGR	C	MB PIN 17	10		SCREEN		
A	P1 PIN # 1	E		11		LW-C-24-7-J-29	WIRE ELECT.	
A	P1 2	E		12		LW-C-24-7-J-39	WIRE ELECT.	
A	P1 PIN 4	C	MB PIN 17	13		LW-C-24-J-0	WIRE ELECT.	
A				14		PL 10010	CONN. PLUG	
B	P2 COND.			.6	15	PX100-5-186	SLEEVING MARKED CA 10561 C/W LATEST REV. LETTER	
B	P2 SCREENGR			1	16	PL154	CONN. PLUG	
A	P1 PIN # 1							
A	P1 PIN # 2							



THIS SYMBOL DENOTES END OF INSULATION AND NAIL DRIVING POINT. WIRE MUST BE STRIPPED 1/2" BEYOND THIS POINT AND TINNED 1/4" UNLESS OTHERWISE SPECIFIED.

THE ABOVE SYMBOL DENOTES END OF SHIELD, WHICH SHOULD BE TERMINATED AS SHOWN, LEAVING EXCESS SHIELDING AS A PIGTAIL. TIN PIGTAIL 1/4 INCH.

CA 10561 X2

TOLERANCES			SCALE:
ALL OTHERS	DEC. DIM. ± 1/64	.XX*.01	DRILL, PUNCH, COMMERCIAL STOCK SIZES AND MANUFACTURERS TOLERANCES ARE NOT INCLUDED.
	FRAC. DIM. ± 1/64	.XX*.01	
	ANGULAR DIM. ± 0° 30'	.XXX*.008	

MTR 16	087-69		AUG 21-69
MODEL	PROJECT NO.	ASSY. NO.	DATE

STOCK SIZE				TMC(Canada)LIMITED OTTAWA ONTARIO			
MATERIAL				CABLE HARNESS, TX			
WEIGHT PER FC.							
TYPE & TEMPER				AHa			
DRAWN				ELEC. DES. APP.		MECH. DES. APP.	
HEAT TREAT. SPEC.				CHECKED		FINAL APPROVAL	
FINISH & SPEC. NO.				CA 10561 X2			