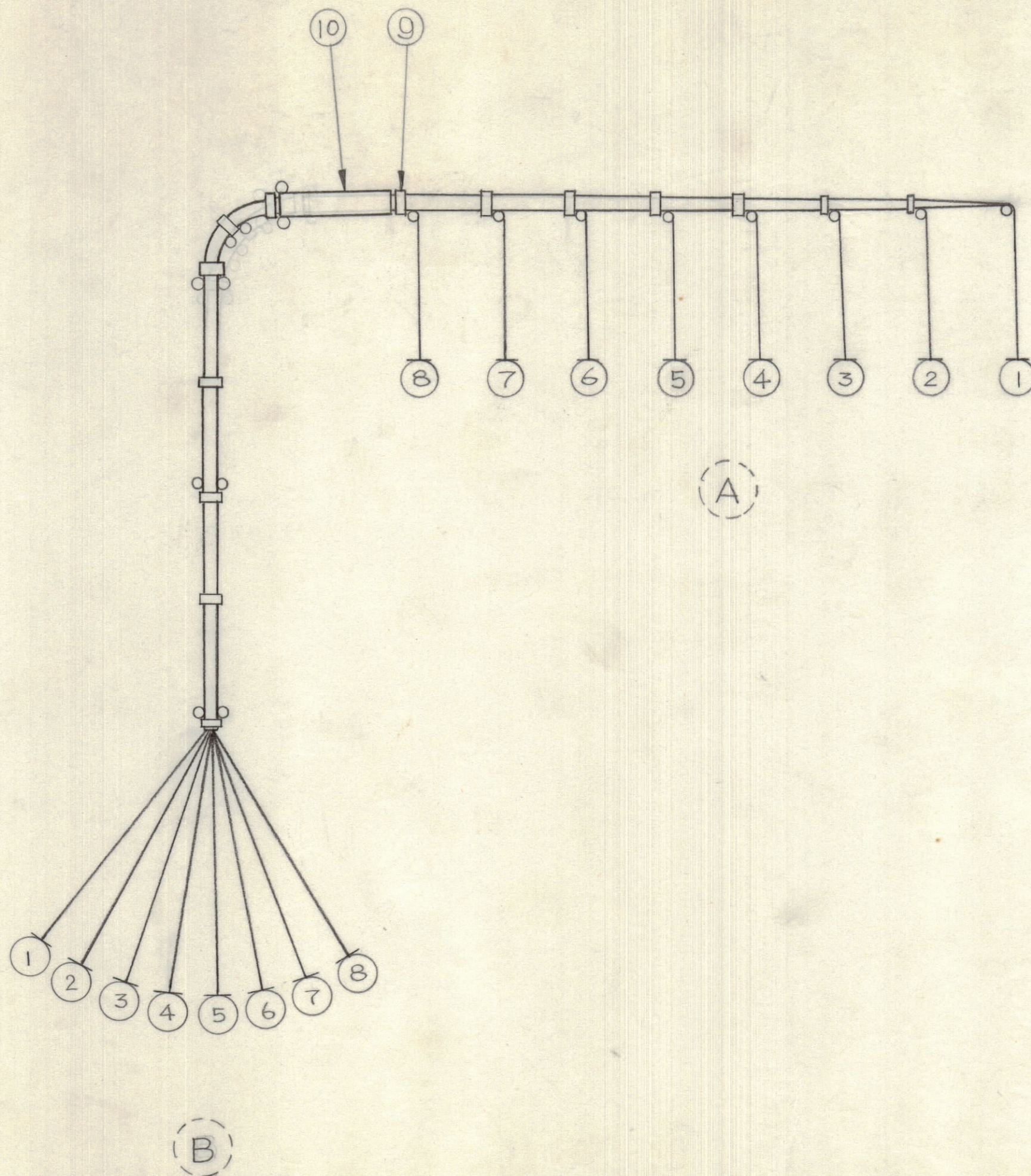


IF IT IS FOUND DESIRABLE TO CHANGE ANY TOLERANCE OR OTHER DETAIL SPECIFIED ON THIS DRAWING NOTIFY THE PURCHASER PROMPTLY.		DIMENSIONS IN INCHES UNLESS OTHERWISE SPECIFIED	
MAXIMUM ALLOWABLE TOLERANCES HAVE BEEN DETERMINED AND DEVIATIONS WILL BE CAUSE FOR REJECTION. REMOVE ALL BURRS AND SHARP EDGES.			
ISSUE	ITEM	CHANGED FROM	DATE
Ø		REL. TO PROD.	Aug. 20, 69
CH. NO.	DRAFTS	CHECKER	ENG. APP.
		Y.M.	

BREAK OUT	FROM COMPONENT	BREAK OUT	TO COMPONENT	REQ.	ITEM	PART NO.	DESCRIPTION	SYMBOL
A	TRANSMIT MOTHER BOARD A10801-5 PIN 1	B	FEED THRU. C1		1	LW-C-24-7-U-1	WIRE ELECTRICAL INSUL.	
A	PIN 3	B	C2		2	-2		
A	PIN 5	B	C3		3	-3		
A	PIN 7	B	C4		4	-4		
A	PIN 9	B	C5		5	-5		
A	PIN 11	B	C6		6	-6		
A	PIN 13	B	C7		7	-7		
A	TRANSMIT MOTHER BOARD A10801-5 PIN 15	B	FEED THRU C8		8	LW-C-24-7-U-8	WIRE ELECTRICAL INSUL.	
					14	9	CU142-8	STRAP CABLE
					1'	10	PX100-9-166	SLEEVING MARKED CA SW LATEST REVISION LETTER
						11		
						12		



CA10558 X

THIS SYMBOL DENOTES END OF INSULATION AND NAIL DRIVING POINT. WIRE MUST BE STRIPPED 1/2" BEYOND THIS POINT AND TINNED 1/4" UNLESS OTHERWISE SPECIFIED.

SYMBOL DENOTES
 ○ ITEM
 ○ BREAK OUT

TOLERANCES		SCALE: 1:1
ALL OTHERS	DEC. DIM. ± 1/64 FRAC. DIM. ± 1/64 ANGULAR DIM. ± 0° 30'	.X*.05 .XX*.01 .XXX*.005
DRILL, PUNCH, COMMERCIAL STOCK SIZES AND MANUFACTURERS TOLERANCES ARE NOT INCLUDED.		

MTR	087/69	Aug. 20, 1969
MODEL	PROJECT NO.	DATE
USED ON		

STOCK SIZE		TMC (Canada) LIMITED OTTAWA ONTARIO	
MATERIAL		WIRING HARNESS	
TYPE & TEMPER		Y. MORI	
HEAT TREAT. SPEC.		CHECKED	FINAL APPROVAL
FINISH & SPEC. NO.		CA10558 X	