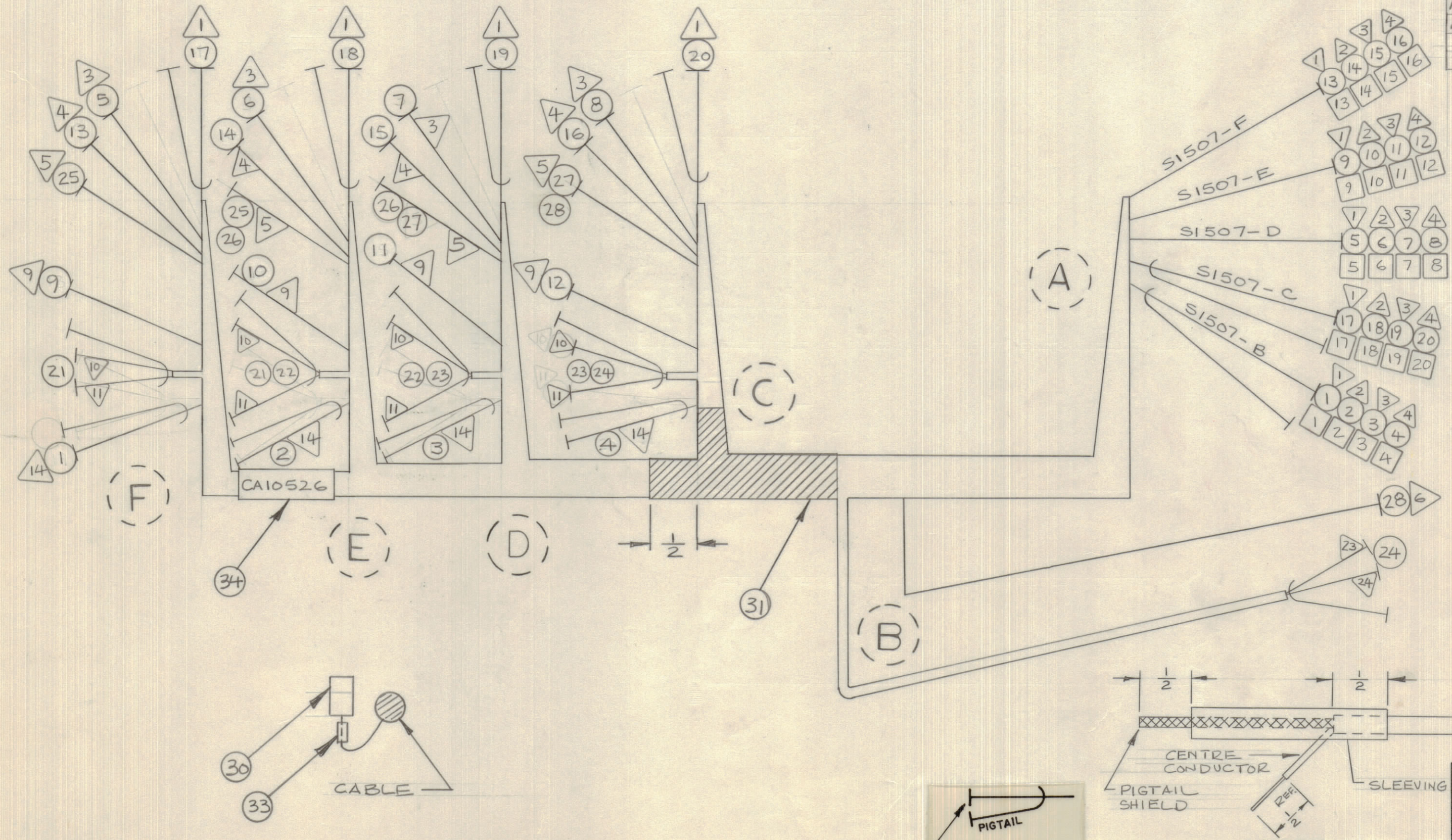


IF IT IS FOUND DESIRABLE TO CHANGE ANY TOLERANCE OR OTHER DETAIL SPECIFIED ON THIS DRAWING NOTIFY THE PURCHASER PROMPTLY.		DIMENSIONS IN INCHES UNLESS OTHERWISE SPECIFIED					
MAXIMUM ALLOWABLE TOLERANCES HAVE BEEN DETERMINED AND DEVIATIONS WILL BE CAUSE FOR REJECTION. REMOVE ALL BURRS AND SHARP EDGES.							
ISSUE	ITEM	CHANGED FROM	DATE	CN. NO.	DRAFTS	CHECKER	ENG. APP.
Ø		REL TO PROD.	JUNE 14/68		RPL		

BK OUT (FROM) COMPONENT	BK OUT TO COMPONENT	REQ.	ITEM	PART NO.	DESCRIPTION	SYMBOL
A	S1507-B1	F	J1514-14	1	RG174/U	CABLE, RF COAXIAL
A	S1507-B2	E	J1513-14	2	RG174/U	
A	S1507-B3	D	J1512-14	3	RG174/U	
A	S1507-B4	C	J1511-14	4	RG174/U	CABLE, RF COAXIAL
A	S1507-D1	F	J1514-3	5	MWC247)U9	WIRE, ELECTRICAL INSUL
A	S1507-D2	E	J1513-3	6	MWC247)U9	
A	S1507-D3	D	J1512-3	7	MWC247)U9	
A	S1507-D4	C	J1511-3	8	MWC247)U9	
A	S1507-E1	F	J1514-9	9	MWC247)U92	
A	S1507-E2	E	J1513-9	10	MWC247)U92	
A	S1507-E3	D	J1512-9	11	MWC247)U92	
A	S1507-E4	C	J1511-9	12	MWC247)U92	
A	S1507-F1	F	J1514-4	13	MWC247)U94	
A	S1507-F2	E	J1513-4	14	MWC247)U94	
A	S1507-F3	D	J1512-4	15	MWC247)U94	
A	S1507-F4	C	J1511-4	16	MWC247)U94	WIRE, ELECTRICAL INSUL
A	S1507-C1	F	J1514-1	17	RG174/U	CABLE, RF COAXIAL
A	S1507-C2	E	J1513-1	18	RG174/U	
A	S1507-C3	D	J1512-1	19	RG174/U	
A	S1507-C4	C	J1511-1	20	RG174/U	CABLE, RF COAXIAL
F	J1514-10,11	E	J1513-10,11	21	WI101-3	CABLE, SPECIAL
E	J1513-10,11	D	J1512-10,11	22	WI101-3	
D	J1512-10,11	C	J1511-10,11	23	WI101-3	
C	J1511-10,11	B	J1500-23,24	24	WI101-3	CABLE, SPECIAL
F	J1514-5	E	J1513-5	25	MWC247)U2	WIRE, ELECTRICAL INSUL
E	J1513-5	D	J1512-5	26	MWC247)U2	
D	J1512-5	C	J1511-5	27	MWC247)U2	
C	J1511-5	B	K1500-6	28	MWC247)U2	WIRE, ELECTRICAL INSUL
AR	29	CU142-8			STRAP, CABLE	
4	30	JJ10010-015-01			CONNECTOR	
AR	31	TA100-1			TAPE, VINYL BLACK	
AR	32	BS100			SOLDER SOLDER	
AR	33	PX830-18-1			SLEEVING, SHRINK TYPE	
1"	34	PX100-9-375			SLEEVING, MARKED CA10526	
					QW LATEST REV. LETTER	



CA10526 Ø

THIS SYMBOL DENOTES END OF INSULATION AND NAIL DRIVING POINT. WIRE MUST BE STRIPPED 1/2" BEYOND THIS POINT AND TINNED 1/4" UNLESS OTHERWISE SPECIFIED.

SYMBOL	DENOTES
○	ITEM
△	PIN NO.
□	WIRE MARKER
○ (with dashed line)	BREAKOUT

THE ABOVE SYMBOL DENOTES END OF SHIELD, WHICH SHOULD BE TERMINATED AS SHOWN, LEAVING EXCESS SHIELDING AS A PIGTAIL. TIN PIGTAIL 1/4 INCH.

TOLERANCES		SCALE:
ALL OTHERS	DEC. DIM. ± .05 FRAC. DIM. ± 1/64 ANGULAR DIM. ± 0° 30'	DRILL, PUNCH, COMMERCIAL STOCK SIZES AND MANUFACTURERS TOLERANCES ARE NOT INCLUDED.

AX10048	053/68	JUNE 6/68
MODEL	PROJECT NO.	DATE

STOCK SIZE		TMC (Canada) LIMITED OTTAWA ONTARIO	
MATERIAL		CABLE, RECEIVER CHANNEL	
TYPE & TEMPER		RPL	
HEAT TREAT. SPEC.		CB	
FINISH & SPEC. NO.		CA10526 Ø	