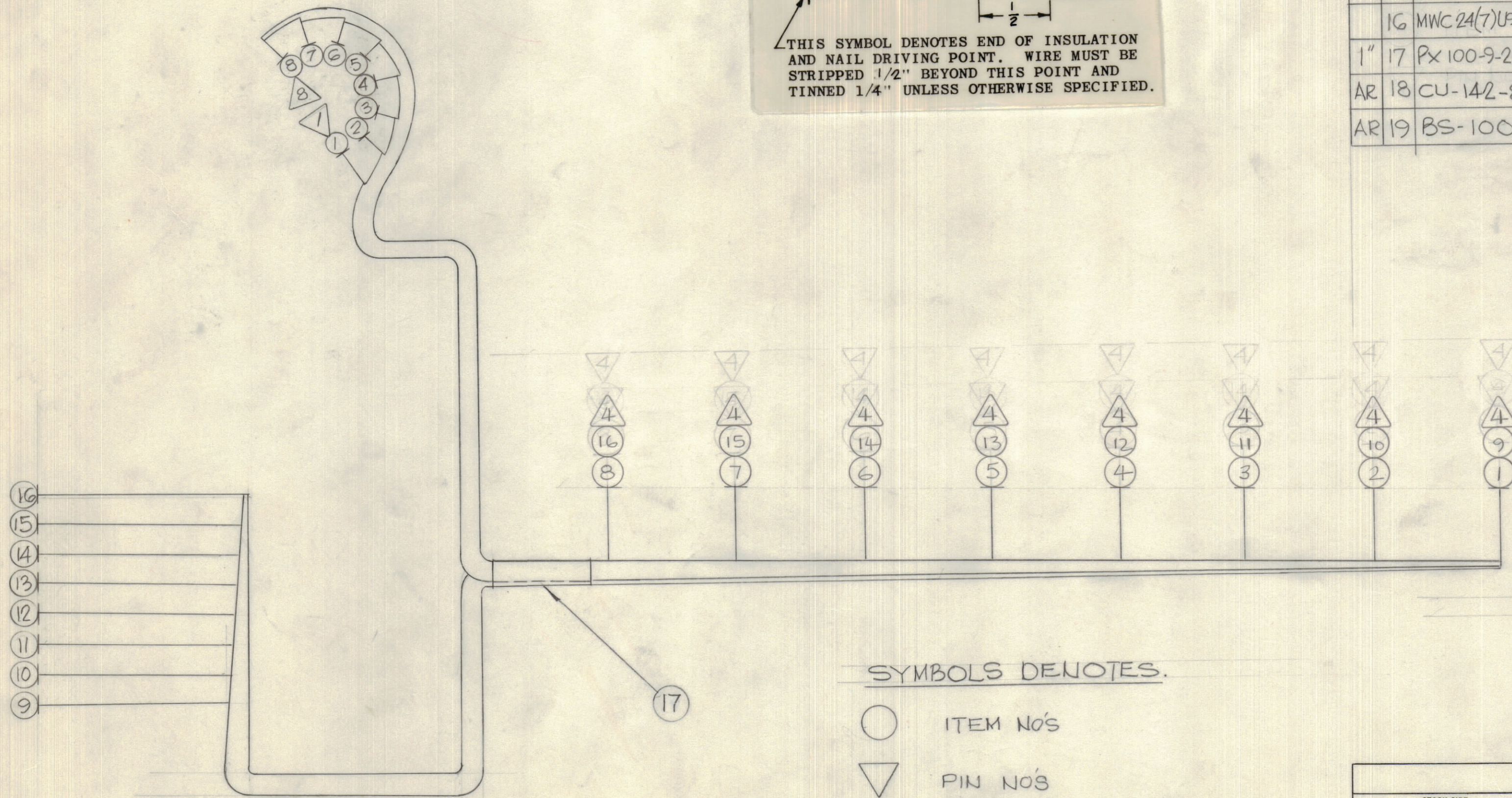


IF IT IS FOUND DESIRABLE TO CHANGE ANY TOLERANCE OR OTHER DETAIL SPECIFIED ON THIS DRAWING NOTIFY THE PURCHASER PROMPTLY.		DIMENSIONS IN INCHES UNLESS OTHERWISE SPECIFIED					
MAXIMUM ALLOWABLE TOLERANCES HAVE BEEN DETERMINED AND DEVIATIONS WILL BE CAUSE FOR REJECTION. REMOVE ALL BURRS AND SHARP EDGES.							
ISSUE	ITEM	CHANGED FROM	DATE	CN. NO.	DRAFTS	CHECKER	ENG. APP.
Ø		REL TO PROD.	JUNE 12/68		RPL	JW	JW

REQ.	ITEM	PART NO.	DESCRIPTION	SYMBOL
1	MWC 24(7)U91		WIRE, ELECTRICAL INSULATED	
2	MWC 24(7)U92			
3	MWC 24(7)U93			
4	MWC 24(7)U94			
5	MWC 24(7)U95			
6	MWC 24(7)U96			
7	MWC 24(7)U97			
8	MWC 24(7)U98		WIRE ELECTRICAL INSULATED	
9	MWC 24(7)U91		INSULATION, SLEEVING ELEC.	
10	MWC 24(7)U92		STRAP, CABLE ADJUSTABLE	
11	MWC 24(7)U93		SOLDER, SOFT	
12	MWC 24(7)U94			
13	MWC 24(7)U95			
14	MWC 24(7)U96			
15	MWC 24(7)U97			
16	MWC 24(7)U98		WIRE ELECTRICAL INSULATED	
17	PX 100-9-208		INSULATION, SLEEVING ELEC.	
AR 18	CU-142-8		STRAP, CABLE ADJUSTABLE	
AR 19	BS-100		SOLDER, SOFT	

THIS SYMBOL DENOTES END OF INSULATION AND NAIL DRIVING POINT. WIRE MUST BE STRIPPED 1/2" BEYOND THIS POINT AND TINNED 1/4" UNLESS OTHERWISE SPECIFIED.



CA10516 Ø

SYMBOLS DENOTES.
 ○ ITEM NO'S
 ▼ PIN NO'S

TOLERANCES		SCALE: 1:1
ALL OTHERS	DEC. DIM. ± .05 FRAC. DIM. ± 1/64 ANGULAR DIM. ± 0° 30'	DRILL, PUNCH, COMMERCIAL STOCK SIZES AND MANUFACTURERS TOLERANCES ARE NOT INCLUDED.

SMR-5	061/68	MAR 6/68
MODEL	PROJECT NO.	DATE

STOCK SIZE		TMC (Canada) LIMITED OTTAWA ONTARIO	
MATERIAL		CABLE ASSEMBLY (CLARIFIER)	
TYPE & TEMPER	WEIGHT PER PC.	DRAWN: Lou Bini	ELEC. DES. APP. JW
HEAT TREAT. SPEC.	CHECKED	MECH. DES. APP.	
FINISH & SPEC. NO.		FINAL APPROVAL	
		CA10516 Ø	