

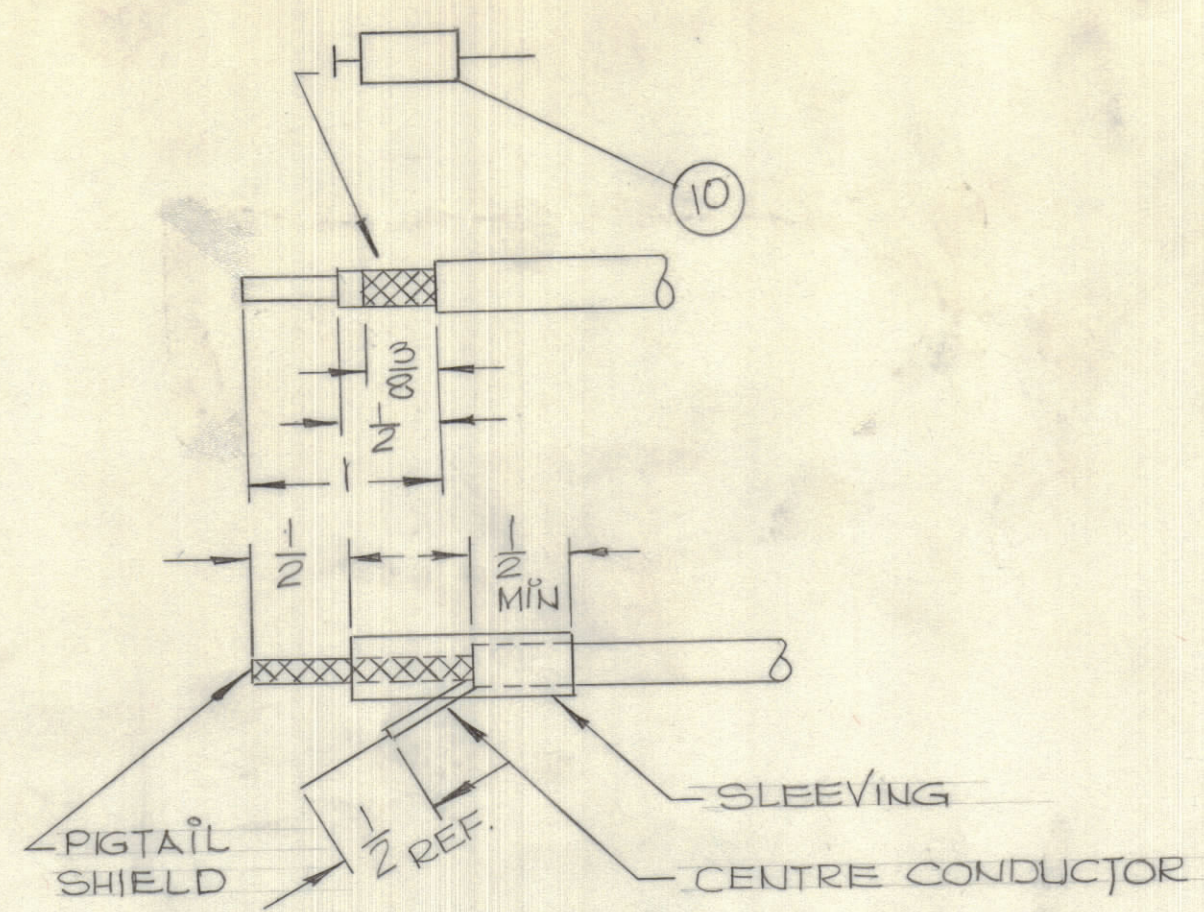
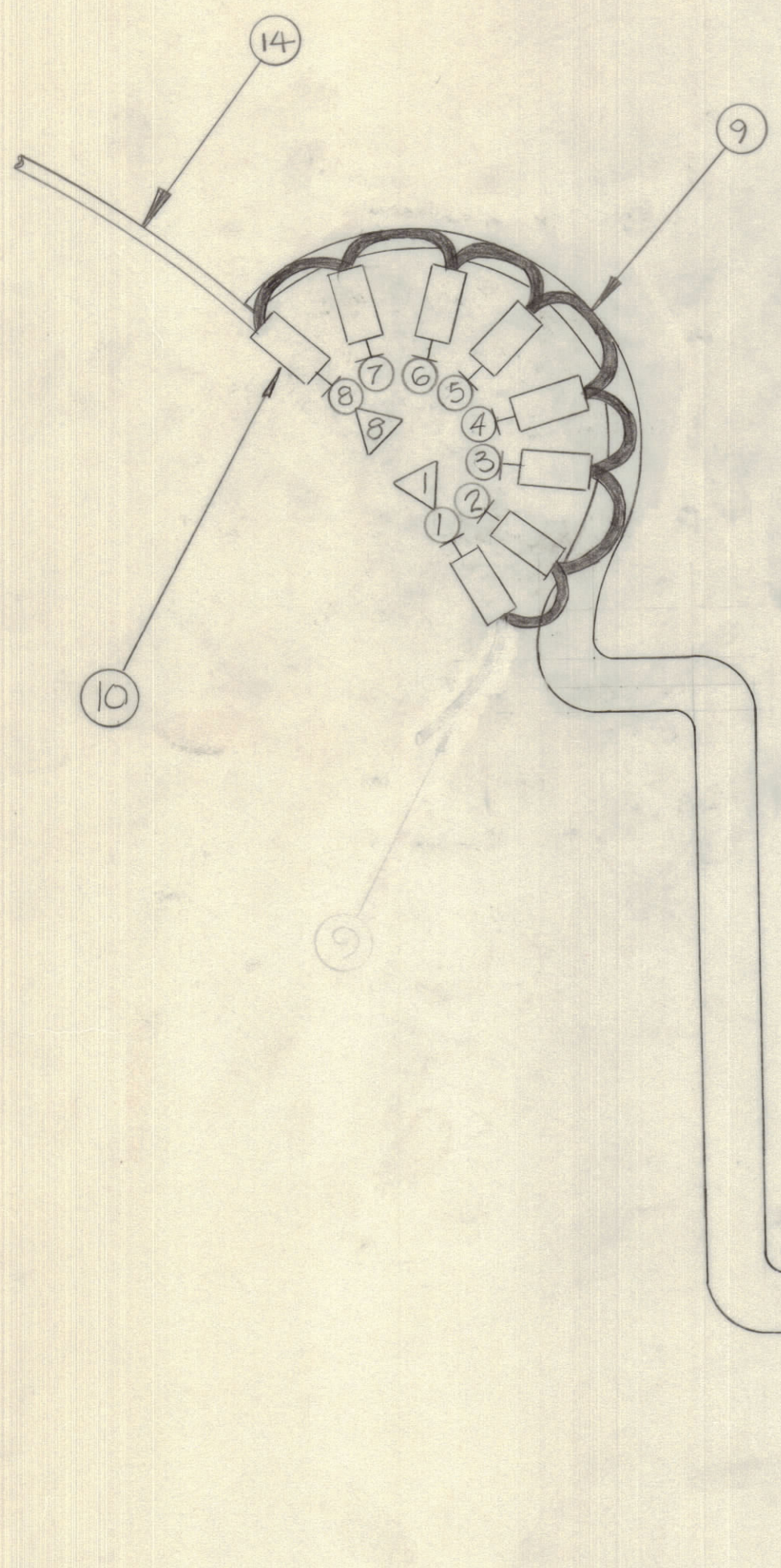
IF IT IS FOUND DESIRABLE TO CHANGE ANY TOLERANCE OR OTHER DETAIL SPECIFIED ON THIS DRAWING NOTIFY THE PURCHASER PROMPTLY.

MAXIMUM ALLOWABLE TOLERANCES HAVE BEEN DETERMINED AND DEVIATIONS WILL BE CAUSE FOR REJECTION. REMOVE ALL BURRS AND SHARP EDGES.

DIMENSIONS IN INCHES UNLESS OTHERWISE SPECIFIED

ISSUE	ITEM	CHANGED FROM	DATE	DN. NO.	DRAFTS	CHECKER	ENG. APP.
0		REL TO PROD	JUNE 12/68		RPL	JW	JW

REQ.	ITEM	PART NO.	DESCRIPTION	SYMBOL
	1	RG174/U	CABLE, COXIAL	
	2			
	3			
	4			
	5			
	6			
	7			
	8	RG174/U	CABLE, COXIAL	
	7 9	CA 10519-1	CABLE, SINGLE WIRE	
	8 10	CU-1001G-1	FERRULE, INSULATED	
	1 11	PX100-9-330	INSULATION SLEEVING, ELECT.	
	AR 12	CU142-8	STRAP, CABLE ADJUSTABLE PLASTIC	
	AR 13	BS-100	SOLDER, SOFT.	
	1 14	CA10519-2	CABLE SINGLE WIRE	



PIGTAIL

THE ABOVE SYMBOL DENOTES END OF SHIELD, WHICH SHOULD BE TERMINATED AS SHOWN, LEAVING EXCESS SHIELDING AS A PIGTAIL. TIN PIGTAIL 1/4 INCH.

SYMBOLS DENOTES:

- ITEM No's
- ▽ PIN No's

CA10515 ∅

TOLERANCES		SCALE: 1:1
ALL OTHERS	DEC. DIM. ± .005 FRAC. DIM. ± 1/64 ANGULAR DIM. ± 0° 30'	DRILL, PUNCH, COMMERCIAL STOCK SIZES AND MANUFACTURERS TOLERANCES ARE NOT INCLUDED.

SMR-5	061/68	MAR. 6/68
MODEL	PROJECT NO.	DATE

STOCK SIZE		TMC (Canada) LIMITED OTTAWA ONTARIO	
MATERIAL		CABLE, ASSEMBLY (HFO INPUT)	
TYPE & TEMPER		Drawn: <i>Southern</i>	MECH. DES. APP. <i>JW</i>
HEAT TREAT. SPEC.		CHECKED: <i>WA</i>	FINAL APPROVAL: <i>JW</i>
FINISH & SPEC. NO.		CA10515 ∅	