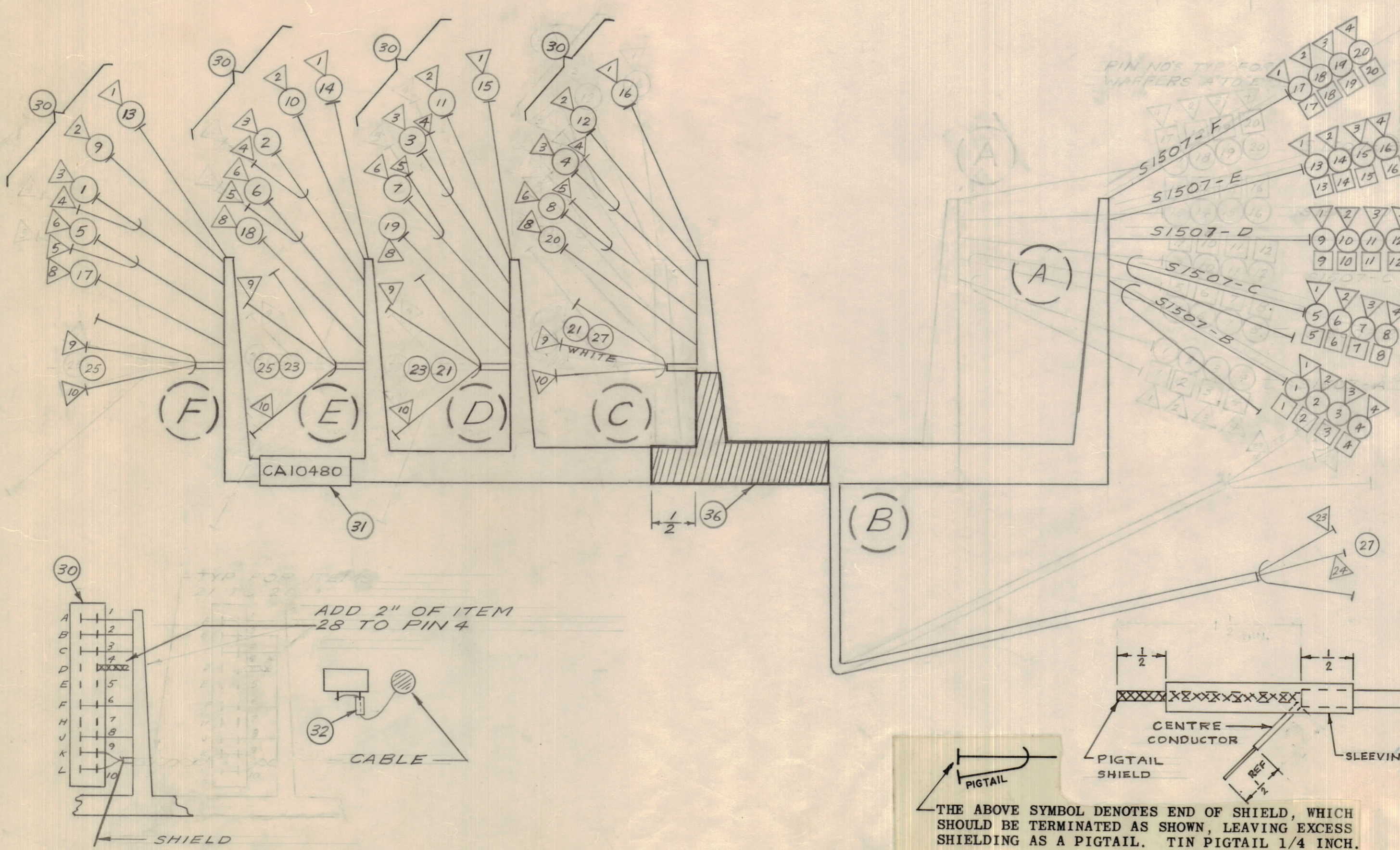


IF IT IS FOUND DESIRABLE TO CHANGE ANY TOLERANCE OR OTHER DETAIL SPECIFIED ON THIS DRAWING NOTIFY THE PURCHASER PROMPTLY.		DIMENSIONS IN INCHES UNLESS OTHERWISE SPECIFIED					
MAXIMUM ALLOWABLE TOLERANCES HAVE BEEN DETERMINED AND DEVIATIONS WILL BE CAUSE FOR REJECTION. REMOVE ALL BURRS AND SHARP EDGES.		OTHERWISE SPECIFIED					
ISSUE	ITEM	CHANGED FROM	DATE	CN. NO.	DRAFTS	CHECKER	ENG. APP.
0		RELEASE TO PROD	2/10/67		AP		

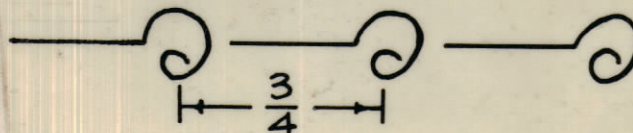
FROM		TO		REQ.	ITEM	PART NO.	DESCRIPTION	SYMBOL
BK OUT	COMPONENT	BK OUT	COMPONENT					
A	S1507-B1	F	J1514-3	1	RG174/U		CABLE RF COAX.	
A	S1507-B2	E	J1513-3	2	RG174/U			
A	S1507-B3	D	J1512-3	3	RG174/U			
A	S1507-B4	C	J1511-3	4	RG174/U			
A	S1507-C1	F	J1514-6	5	RG174/U			
A	S1507-C2	E	J1513-6	6	RG174/U			
A	S1507-C3	D	J1512-6	7	RG174/U			
A	S1507-C4	C	J1511-6	8	RG174/U		CABLE RF COAX	
A	S1507-D1	F	J1514-2	9	MWC24(7)U9		WIRE ELEC INSUL	
A	S1507-D2	E	J1513-2	10	MWC24(7)U9			
A	S1507-D3	D	J1512-2	11	MWC24(7)U9			
A	S1507-D4	C	J1511-2	12	MWC24(7)U9			
A	S1507-E1	F	J1514-1	13	MWC24(7)U2			
A	S1507-E2	E	J1513-1	14	MWC24(7)U2			
A	S1507-E3	D	J1512-1	15	MWC24(7)U2			
A	S1507-E4	C	J1511-1	16	MWC24(7)U2			
A	S1507-F1	F	J1514-8	17	MWC24(7)U7			
A	S1507-F2	E	J1513-8	18	MWC24(7)U7			
A	S1507-F3	D	J1512-8	19	MWC24(7)U7			
A	S1507-F4	C	J1511-8	20	MWC24(7)U7		WIRE ELEC INSUL	
C	J1511-9,10	D	J1512-9,10	21	WI-101-3		CABLE, SHIELD FLEXIBLE	
				22				
D	J1512-9,10	E	J1513-9,10	23	WI-101-3			
				24				
E	J1513-9,10	F	J1514-9,10	25	WI-101-3			
				26				
B	J1500-23,24	C	J1511-9,10	27	WI-101-3		CABLE SHIELD FLEXIBLE	
				28	WL103-1		WIRE BRAIDED FLAT	
				29				
4	30	JJ287-20					CONN RECEPT FEMALE	
1"	31	PX100-9-375					SLEEVING MARKED CA10480 w LATEST REV LETTER	
AR	32	PX830-18-1					SLEEVING SHRINK TYPE	
AR	33	CD101-1-MW					CORD LACING NYLON	
AR	34	BS100					SOLDER SOFT	
AR	35						WIRE MARKERS	
AR	36	TA100-1					TAPE VINYL PLASTIC, BLACK	



UNLESS OTHERWISE SPECIFIED
WIRES SHOULD BE PLACED IN CABLE IN NUMERICAL SEQUENCE
AS THEY APPEAR IN ITEM COLUMN BY CATEGORY.

1. ALL R.F. CABLES
2. ALL SHIELDED CABLES
3. ALL OTHERS

SPACE LACING APPROXIMATELY 3/4" APART.



CA10480

THIS SYMBOL DENOTES END OF INSULATION
AND NAIL DRIVING POINT. WIRE MUST BE
STRIPPED 1/2" BEYOND THIS POINT AND
TINNED 1/4" UNLESS OTHERWISE SPECIFIED.

- SYMBOL DENOTES
- ITEM NO.
 - △ PIN NO.
 - WIRE MARKER
 - BREAKOUT

THE ABOVE SYMBOL DENOTES END OF SHIELD, WHICH
SHOULD BE TERMINATED AS SHOWN, LEAVING EXCESS
SHIELDING AS A PIGTAIL. TIN PIGTAIL 1/4 INCH.

TOLERANCES		SCALE: 1/8"
ALL OTHERS	DEC. DIM. ± 1/8	DRILL, PUNCH, COMMERCIAL STOCK SIZES AND MANUFACTURERS TOLERANCES ARE NOT INCLUDED.

AX10033	053/67	27 FEB 67
MODEL	PROJECT NO.	ASSY. NO.
		DATE
USED ON		

STOCK SIZE		TMC (Canada) LIMITED ONTARIO	
MATERIAL		CABLE, RCVR, CHANNEL	
TYPE & TEMPER		RPL	
HEAT TREAT. SPEC.		DRAWN	ELEC. DES. APP. MECH. DES. APP.
FINISH & SPEC. NO.		CHECKED	FINAL APPROVAL
			CA10480