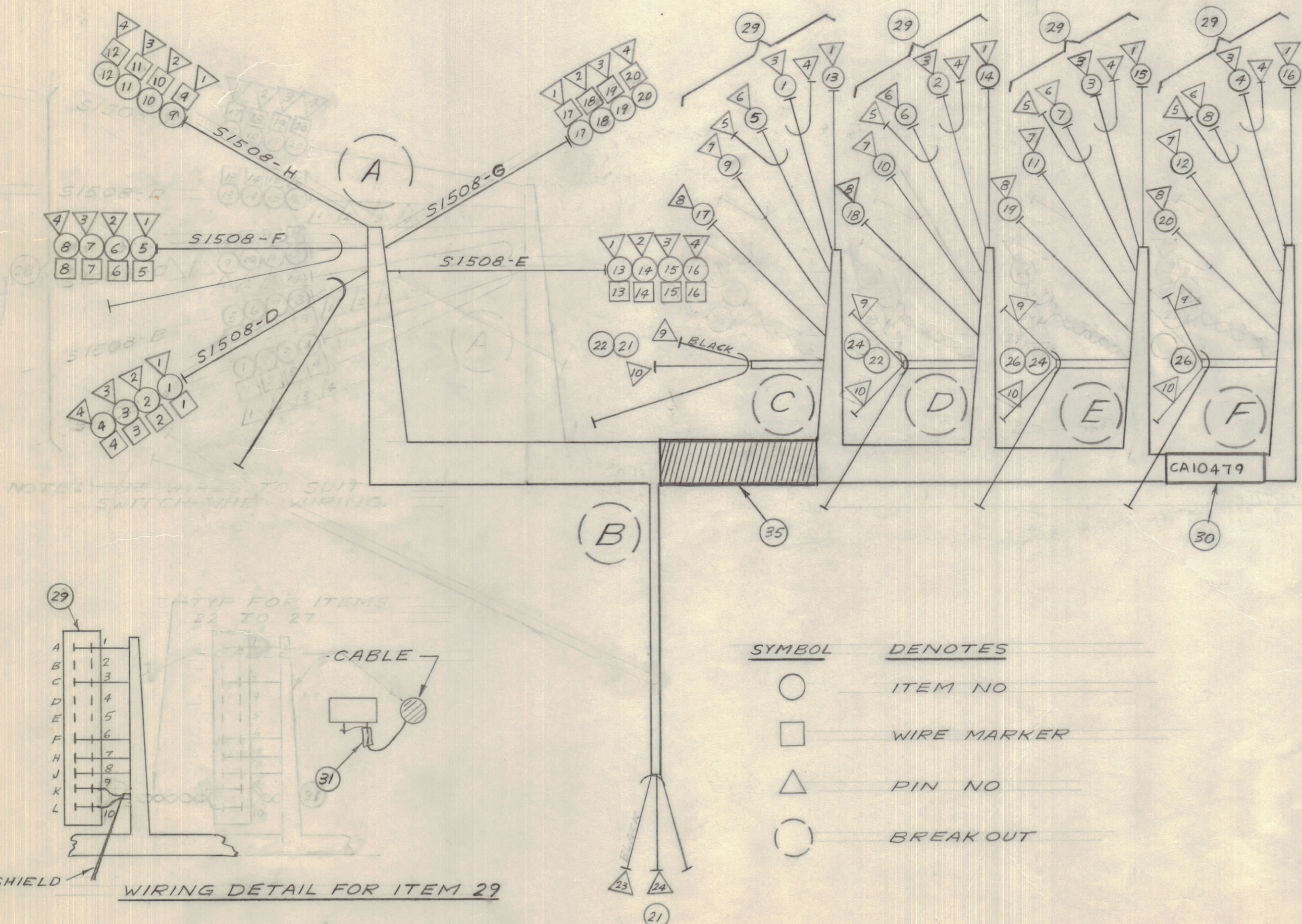


IF IT IS FOUND DESIRABLE TO CHANGE ANY TOLERANCE OR OTHER DETAIL SPECIFIED ON THIS DRAWING NOTIFY THE PURCHASER PROMPTLY.		DIMENSIONS IN INCHES UNLESS OTHERWISE SPECIFIED					
MAXIMUM ALLOWABLE TOLERANCES HAVE BEEN DETERMINED AND DEVIATIONS WILL BE CAUSE FOR REJECTION. REMOVE ALL BURRS AND SHARP EDGES.							
ISSUE	ITEM	CHANGED FROM	DATE	CN. NO.	DRAFTS	CHECKER	ENG. APP.
1	1	RELEASE TO PROD	2/10/67		AP	W	W

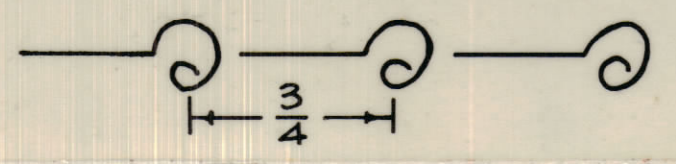
BK OUT	FROM COMPONENT	BK OUT	TO COMPONENT	REQ.	ITEM	PART NO.	DESCRIPTION	SYMBOL
A	S1508-D1	C	J1510-3	1	RG174/U		CABLE RF COAX	
A	S1508-D2	D	J1509-3	2	RG174/U			
A	S1508-D3	E	J1508-3	3	RG174/U			
A	S1508-D4	F	J1507-3	4	RG174/U			
A	S1508-F1	C	J1510-6	5	RG174/U			
A	S1508-F2	D	J1509-6	6	RG174/U			
A	S1508-F3	E	J1508-6	7	RG174/U			
A	S1508-F4	F	J1507-6	8	RG174/U		CABLE RF COAX	
A	S1508-H1	C	J1510-7	9	MWC24(7)U97		WIRE ELEC INSUL	
A	S1508-H2	D	J1509-7	10	MWC24(7)U97			
A	S1508-H3	E	J1508-7	11	MWC24(7)U97			
A	S1508-H4	F	J1507-7	12	MWC24(7)U97			
A	S1508-E1	C	J1510-1	13	MWC24(7)U2			
A	S1508-E2	D	J1509-1	14	MWC24(7)U2			
A	S1508-E3	E	J1508-1	15	MWC24(7)U2			
A	S1508-E4	F	J1507-1	16	MWC24(7)U2			
A	S1508-G1	C	J1510-8	17	MWC24(7)U7			
A	S1508-G2	D	J1509-8	18	MWC24(7)U7			
A	S1508-G3	E	J1508-8	19	MWC24(7)U7			
A	S1508-G4	F	J1507-8	20	MWC24(7)U7		WIRE ELEC INSUL	
B	J1500-23,24	C	J1510-9,10	21	WI101-3		CABLE, SHIELD FLEXIBLE	
C	J1510-9,10	D	J1509-9,10	22	WI101-3			
				23				
D	J1509-9,10	E	J1508-9,10	24	WI101-3			
				25				
E	J1508-9,10	F	J1507-9,10	26	WI101-3		CABLE SHIELD FLEXIBLE	
				27				
				28				
				4	29	JJ287-20	CONN RECEPT FEMALE	
				1	30	PX100-9-375	SLEEVING MARKED CA10479	
							W LATEST REV LETTER	
				AR	31	PX830-18-1	SLEEVING SHRINK TYPE	
				AR	32	CD101-1-MW	CORD LACING NYLON	
				AR	33	BS100	SOLDER SOFT	
				AR	34		WIRE MARKERS	
				AR	35	TA100-1	TAPE VINYL PLASTIC, BLACK	



UNLESS OTHERWISE SPECIFIED WIRES SHOULD BE PLACED IN CABLE IN NUMERICAL SEQUENCE AS THEY APPEAR IN ITEM COLUMN BY CATEGORY.

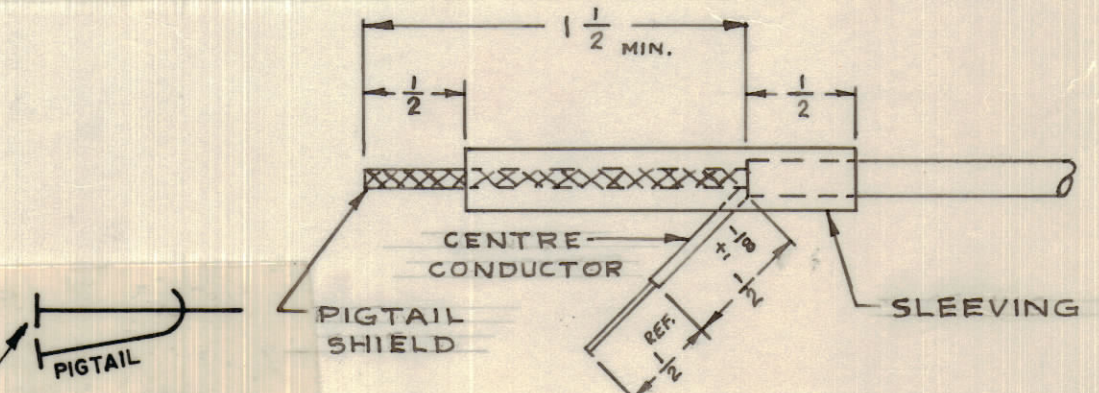
1. ALL R.F. CABLES
2. ALL SHIELDED CABLES
3. ALL OTHERS

SPACE LACING APPROXIMATELY 3/4" APART.



THIS SYMBOL DENOTES END OF INSULATION AND NAIL DRIVING POINT. WIRE MUST BE STRIPPED 1/2" BEYOND THIS POINT AND TINNED 1/4" UNLESS OTHERWISE SPECIFIED.

THIS SYMBOL INDICATES END OF SHIELDING.



THE ABOVE SYMBOL DENOTES END OF SHIELD, WHICH SHOULD BE TERMINATED AS SHOWN, LEAVING EXCESS SHIELDING AS A PIGTAIL. TIN PIGTAIL 1/4 INCH.

CA10479

TOLERANCES	SCALE: 1/2"
ALL OTHERS	DRILL, PUNCH, COMMERCIAL STOCK SIZES AND MANUFACTURERS TOLERANCES ARE NOT INCLUDED.

AX10033	053/67	1 MAR 67
MODEL	PROJECT NO.	DATE

STOCK SIZE		TMC (Canada) LIMITED	
		OTTAWA	ONTARIO
MATERIAL		CABLE ASSY	
WEIGHT PER FC.		XMTR CHANNELS	
TYPE & TEMPER		RD	
		DRAWN	ELEC. DES. APP.
HEAT TREAT. SPEC.		CHECKED	MECH. DES. APP.
		FINAL APPROVAL	
FINISH & SPEC. NO.		CA10479	