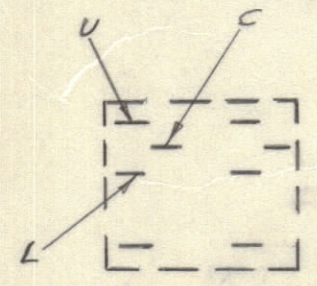


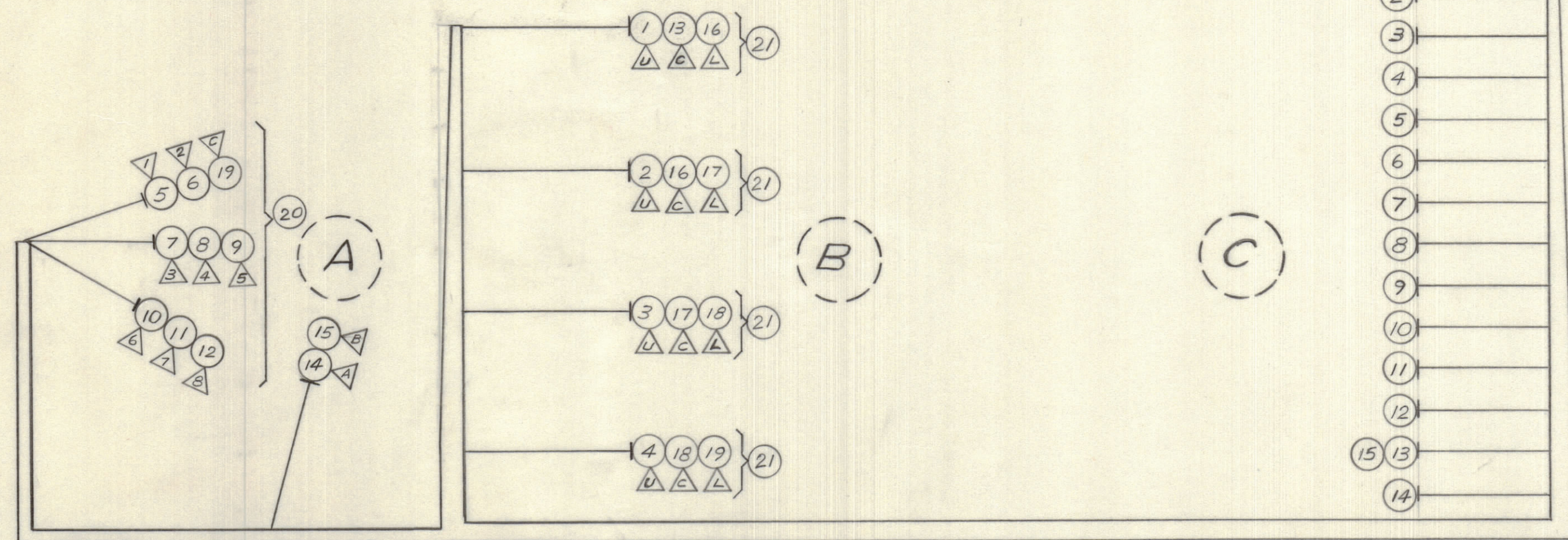
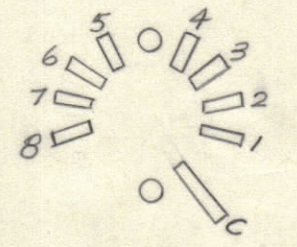
IF IT IS FOUND DESIRABLE TO CHANGE ANY TOLERANCE OR OTHER DETAIL SPECIFIED ON THIS DRAWING NOTIFY THE PURCHASER PROMPTLY.		DIMENSIONS IN INCHES UNLESS OTHERWISE SPECIFIED					
MAXIMUM ALLOWABLE TOLERANCES HAVE BEEN DETERMINED AND DEVIATIONS WILL BE CAUSE FOR REJECTION. REMOVE ALL BURRS AND SHARP EDGES.							
ISSUE	ITEM	CHANGED FROM	DATE	CN. NO.	DRAFTS	CHECKER	ENG. APP.
B		REL TO PROD	13-7-66		RD		
A		DETAILS ITEM NOS REVERSED	2-8-66		RD		

BKOUT (FROM) COMPONENT	BKOUT (TO) COMPONENT	REQ.	ITEM	PART NO.	DESCRIPTION	SYMBOL
B S1-U	C TBI-1		1	MWC18(16)U0	WIRE ELEC. INSUL.	
B S2-U	C TBI-2		2	U1		
B S3-U	C TBI-3		3	U2		
B S4-U	C TBI-4		4	U3		
A S5-1	C TBI-5		5	U4		
A S5-2	C TBI-6		6	U5		
A S5-3	C TBI-7		7	U6		
A S5-4	C TBI-8		8	U7		
A S5-5	C TBI-9		9	U8		
A S5-6	C TBI-10		10	U9		
A S5-7	C TBI-11		11	U90		
A S5-8	C TBI-12		12	U91		
B S1-C	C TBI-13		13	U92		
A I1-A	C TBI-14		14	U93		
A I1-B	C TBI-13		15	U94		
B S2-C	B S1-L		16	U95		
B S3-C	B S2-L		17	U96		
B S4-C	B S3-L		18	U97		
A S5-C	B S4-L		19	MWC 18(16)U98	WIRE ELEC. INSUL.	
			1	20 SW10026	SWITCH, WAFER IP8T	S5
			4	21 SW10027	SWITCH, LEVER	S1-S4

SHOWN AS VIEWED FROM REAR
ITEM 21 (S1 TO S4)



ITEM 20 (S5)



CA10463 A

UNLESS OTHERWISE SPECIFIED
WIRES SHOULD BE PLACED IN CABLE IN NUMERICAL SEQUENCE AS THEY APPEAR IN ITEM COLUMN BY CATEGORY.

- ALL R.F. CABLES
- ALL SHIELDED CABLES
- ALL OTHERS

SPACE LACING APPROXIMATELY 3/4" APART.

THIS SYMBOL DENOTES END OF INSULATION AND NAIL DRIVING POINT. WIRE MUST BE STRIPPED 1/2" BEYOND THIS POINT AND TINNED 1/4" UNLESS OTHERWISE SPECIFIED.

▷ DENOTES CONTACT DESIGNATIONS

TOLERANCES		SCALE: 1/2"
ALL OTHERS	DEC. DIM. ± 1/8 FRAC. DIM. ± 1/8 ANGULAR DIM. ±	DRILL, PUNCH, COMMERCIAL STOCK SIZES AND MANUFACTURERS TOLERANCES ARE NOT INCLUDED.

AX10011	030/66	12-7-66
MODEL	PROJECT NO.	ASS'Y. NO.
		DATE

STOCK SIZE		TMC (Canada) LIMITED OTTAWA ONTARIO	
MATERIAL		WIRING HARNESS BRANCHED	
TYPE & TEMPER		RD	
HEAT TREAT. SPEC.		CHECKED	FINAL APPROVAL
FINISH & SPEC. NO.		LANGER	CA10463 A