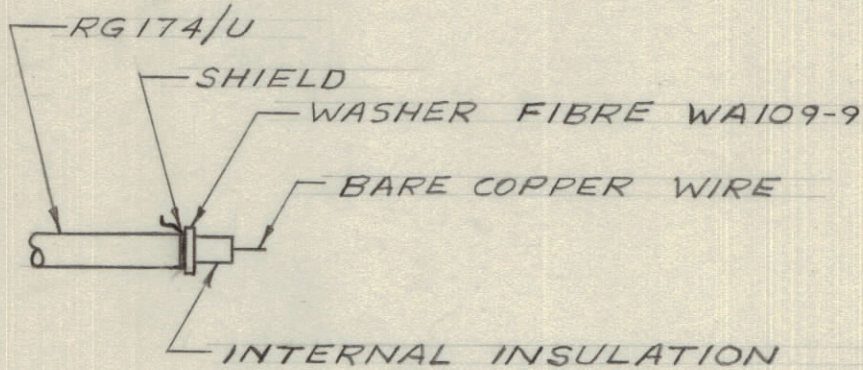
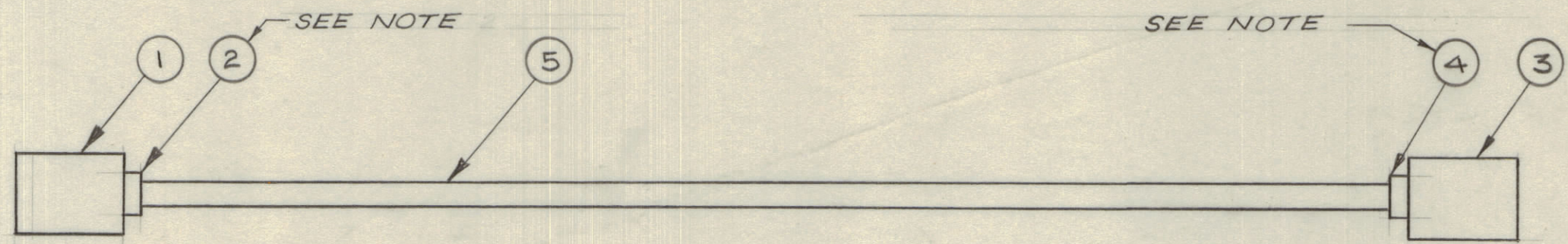


IF IT IS FOUND DESIRABLE TO CHANGE ANY TOLERANCE OR OTHER DETAIL SPECIFIED ON THIS DRAWING NOTIFY THE PURCHASER PROMPTLY.

MAXIMUM ALLOWABLE TOLERANCES HAVE BEEN DETERMINED AND DEVIATIONS WILL BE CAUSE FOR REJECTION. REMOVE ALL BURRS AND SHARP EDGES



DETAIL "A"



NOTES:

NOMENCLATURE SHALL BE DESIGNATED AS SHOWN IN THE FOLLOWING EXAMPLES

CA10447-1-120  
TMC PART NO. ACCORDING TO CHART      LENGTH IN INCHES

CA10447-1-11F  
TMC PART NO. ACCORDING TO CHART      LENGTH IN FEET

LENGTHS 10FT OR LESS EXPRESS IN INCHES  
OVER 10FT EXPRESS IN FEET

TMC PART NO.	ITEM 1 CONNECTOR	SERIES	ITEM 2 ADAPTER	ITEM 3 CONNECTOR	SERIES	ITEM 4 ADAPTER	ITEM 5 CABLE	OHMS
CA10447-1	PL244-1	BNC	N/A	PL244-1	BNC	N/A	RG174/U	50
CA10447-2	PL244-1	BNC	N/A	PL259A/TEF.	UHF	UG176/U PM10080	RG174/U	50
CA10447-3	PL259A/TEF.	UHF	UG176/U PM10080	PL259A/TEF.	UHF	UG176/U PM10080	RG174/U	50
CA10447-4	PL10014	BNC	N/A	PL10014	BNC	N/A	RG174/U	50

CA10447 B

NOTE:

WHEN ASSEMBLING CABLE USING ADAPTER PM10080 FIBRE WASHER MUST BE USED AS PER DETAIL "A"

B.	REVISED AS PER CEMM	12-1-73	12/12	C.C.	HCS	SMW	
A	NOTE & DETAIL "A" ADDED	21-6-66		RD	RD	RD	
Ø	RELEASED	14-3-66		RD			
ISSUE	ITEM	CHANGED FROM	DATE	CN. NO.	DRAFTS	CHECKER	ENG. APP.

TOLERANCES		SCALE:	
ALL OTHERS	DEC. DIM. ± FRAC. DIM. ± ANGULAR DIM. ±	DRILL, PUNCH, COMMERCIAL STOCK SIZES AND MANUFACTURERS TOLERANCES ARE NOT INCLUDED.	

ACG 10002	C11366		JULY 18 72
ACG 10001	050/66		MARCH 14/66
MODEL	PROJECT NO.	ASS'Y. NO.	DATE
USED ON			

REQ.	ITEM	PART NO.	DESCRIPTION	SYMBOL
			TMC (Canada) LIMITED OTTAWA ONTARIO	
			CABLE ASS'Y RF	
			RPL	
			DRAWN	ELEC. DES. APP. MECH. DES. APP.
			CHECKED	FINAL APPROVAL
				CA10447 B
			FINISH & SPEC. NO.	