

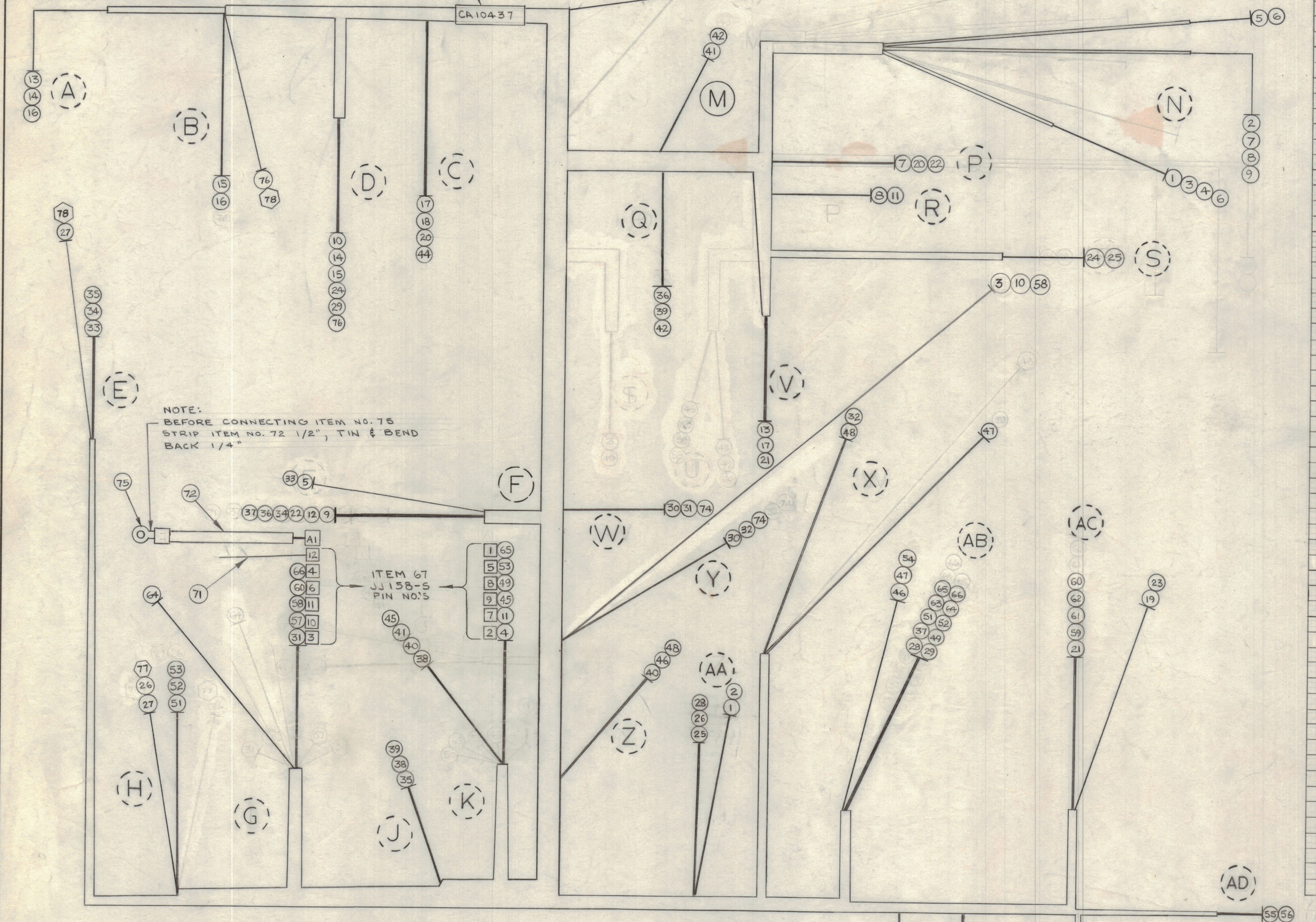
IF IT IS FOUND DESIRABLE TO CHANGE ANY TOLERANCE OR OTHER DETAIL SPECIFIED ON THIS DRAWING NOTIFY THE PURCHASER PROMPTLY.

MAXIMUM ALLOWABLE TOLERANCES HAVE BEEN DETERMINED AND DEVIATIONS WILL BE CAUSE FOR REJECTION. REMOVE ALL BURRS AND SHARP EDGES.

ISSUE	ITEM	CHANGED FROM	DATE	DN NO	DRAFT	CHECK	EN. APP
E		ITEMS 77, 78 ADDED	1-6-66	028	RD		
F		REV PER CEMN	12-7-66	028	RD		
G		REV PER CEMN	11-16-66	085	RPL		
H		REV PER CEMN	12-28-66	1178	C.O.	LB	
J		REV PER CEMN	12-28-66	1234	W/M		

BKOUT (FROM) COMPONENT	BKOUT (TO) COMPONENT	REQ. ITEM	PART NO.	DESCRIPTION
W	C109	Y	R107	
B	C104	D	CB102-D	
		74	MWC20(7)U0	WIRE, ELECTRICAL INSULATED
		75	TE155-34171	LUG, INSULATED
		76	MWC20(7)U1	WIRE, ELECTRICAL INSULATED
		77	TE159-32961	LUG, INSULATED
		78	TE156-32953	LUG, INSULATED

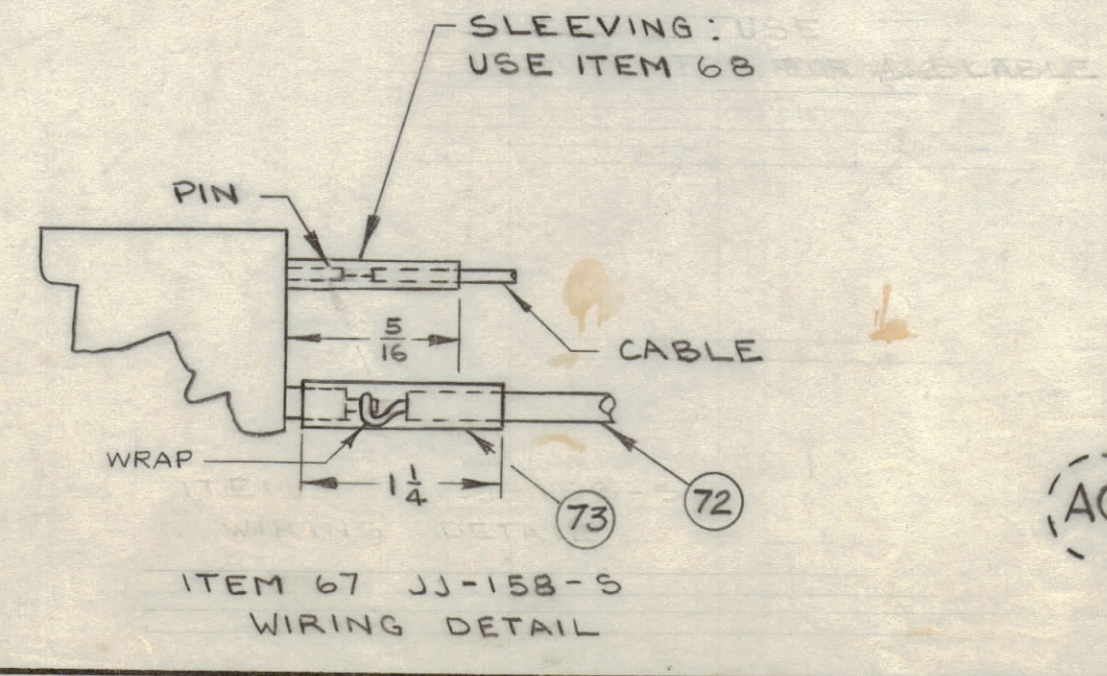
BKOUT (FROM) COMPONENT	BKOUT (TO) COMPONENT	REQ. ITEM	PART NO.	DESCRIPTION
N	CB101-1A	AA	J101	
N	CB101-2A	AA	J101	
N	CB101-1B	Y	K103-A1	
N	CB101-1B	K	J102-2	
N	F101	F	T101-1	
N	F101	N	CB101-1	
N	CB101-2B	P	DS101	
N	CB101-2B	R	T102-1	
N	CB101-2B	F	T101-4	
D	CB102-B	Y	K103-A2	
R	T102-1	K	J102-7	
F	TB101-4	AG	T101-4	
A	R104-2	V	T102-4	
A	R104-2	D	CB102-A	
B	DS103-2	D	CB102-B	
A	R104-1	B	DS103-1	
C	DS102-2	V	T102-3	
L	DS102-2	L	S103-A2	
L	S103-A1	AC	K101-B1	
C	DS102-1	P	DS101-1	
V	T102-3	AC	K101-B2	
F	T101-2	P	DS101-2	
AC	K101-B1	AF	TB101-3	
D	CB102-D	S	T102-6	
S	T102-6	AA	R116-CCW	
AA	R116-CCW	H	C106	
H	C106	E	C105	
AA	R116-CW	AB	TB102-10	
D	CB102-C	AB	TB102-9	
W	C109	Y	R107-1	
G	J102-3	W	C109	
X	CR106-CA	Y	R107-1	
E	R120	F	T101-5	
E	R121	F	T101-7	
E	CR101 & CR102	J	L101-1	
F	T101-6	Q	C101-1	
J	L101-2	K	L102-1	
J	L101-2	Q	C101-2	
K	L102-1	Z	R102-1	
K	L102-2	M	C102-2	
M	C102-1	Q	C101-1	
C	DS102-1	L	R119	
K	J102-9	K	L102-2	
Z	R102-1	AB	TB102-3	
X	CR105-AN	AB	TB102-4	
X	CR107-AN	Z	R102-2	
AB	TB102-6	K	J102-8	
H	C103-1	AB	TB102-6	
H	C103-2	AB	TB102-5	
H	C103-2	K	J102-5	
AB	TB102-2	AE	S102-1	
AD	S101-1	AE	S102-2	
AD	S101-2	AG	TB101-3	
G	J102-10	AG	TB101-6	
G	J102-11	Y	R124-BOT. TERM	
L	S103-B2	AC	K101-A2	
G	J102-6	AC	K101-A2	
AC	K101-C1	AF	TB101-1	
AC	K101-C2	AF	TB101-2	
AB	TB102-8	AF	TB101-0	
S	R109	AB	TB102-11	
K	J102-1	AB	TB102-11	
G	J102-4	AB	TB102-7	



UNLESS OTHERWISE SPECIFIED WIRES SHOULD BE PLACED IN CABLE IN NUMERICAL SEQUENCE AS THEY APPEAR IN ITEM COLUMN BY CATEGORY.

- ALL R.F. CABLES
- ALL SHIELDED CABLES
- ALL OTHERS

SPACE LACING APPROXIMATELY 3/4" APART.



THIS SYMBOL DENOTES END OF INSULATION AND NAIL DRIVING POINT. WIRE MUST BE STRIPPED 1/2" BEYOND THIS POINT AND TINNED 1/4" UNLESS OTHERWISE SPECIFIED.

REQ. ITEM	PART NO.	DESCRIPTION	SYMBOL
31	1	MWC16(19)U8	WIRE, ELECTRICAL INSULATED
2		MWC16(19)U8	
3		MWC18(7)U7	
4		MWC20(7)U7	
5		MWC20(7)U9	
6		MWC20(7)U97	
7		MWC20(7)U98	
8		MWC16(19)U98	
9		MWC20(7)U98	
10		MWC18(7)U98	
11		MWC20(7)U98	
12		MWC20(7)U98	
13		MWC16(19)U97	
14		MWC16(19)U97	
15		MWC20(7)U98	
16		MWC20(7)U9	
17		MWC20(7)U9	
18		MWC20(7)U9	
19		MWC20(7)U97	
20		MWC20(7)U98	
21		MWC20(7)U9	
22		MWC20(7)U7	
23		MWC20(7)U97	
24		MWC20(7)U1	
25		MWC20(7)U1	
26		MWC20(7)U1	
27		MWC20(7)U1	
28		MWC20(7)U91	
29		MWC20(7)U92	
30		MWC20(7)U3	
31		MWC20(7)U3	
32		MWC20(7)U3	
33		MWC22(7)U4	
34		MWC22(7)U94	
35		MWC22(7)U5	
36		MWC22(7)U6	
37		MWC22(7)U6	
38		MWC22(7)U96	
39		MWC22(7)U96	
40		MWC22(7)U5	
41		MWC22(7)U5	
42		MWC22(7)U6	
43			
44		MWC22(7)U98	
45		MWC22(7)U95	
46		MWC22(7)U5	
47		MWC22(7)U4	
48		MWC22(7)U0	
49		MWC22(7)U94	
50			
51		MWC22(7)U94	
52		MWC22(7)U6	
53		MWC22(7)U6	
54		MWC22(7)U95	
55		MWC22(7)U96	
56		MWC22(7)U94	
57		MWC22(7)U4	
58		MWC22(7)U93	
59		MWC22(7)U96	
60		MWC22(7)U96	
61		MWC22(7)U5	
62		MWC22(7)U95	
63		MWC22(7)U0	
64		MWC22(7)U2	
65		MWC22(7)U2	
66		MWC22(7)U92	WIRE, ELECTRICAL INSULATED
1	67	JJ158-S	CONNECTOR, RECEPTACLE
AR	68	PX830-16-1	SLEEVING, SHRINK TYPE
AR	69	CD101-1 MW	CORD, LACING
	70	PX100-9-294	SLEEVING, MARKED CA10437 C/W LATEST REVISION LETTER
1 1/2	71	WL100-6	WIRE, BUSS #20
6"	72	WI-126-1	WIRE, H.V.
AR	73	PX830-8-1	SLEEVING, SHRINK TYPE

TOLERANCES	SCALE: 1:1
ALL DEC. DIM. ±	DRILL, PUNCH, COMMERCIAL STOCK
OTHERS FRACTIONAL DIM. ±	SIZES AND MANUFACTURERS
ANGULAR DIM. ±	TOLERANCES ARE NOT INCLUDED

MODEL	PROJECT NO.	ASSY. NO.	DATE
PSP-500	028/66		JAN 19/66

STOCK SIZE

MATERIAL WEIGHT PER PC

TYPE & TEMPER

HEAT TREAT. SPEC.

FINISH & SPEC. NO.

**TMC (Canada) LIMITED**  
OTTAWA ONTARIO

WIRING, HARNESS

BRANCHED

RPL  
DRAWN  
CHECKED

ELECTRONICS APP.  
MECH. DES. APP.

FINAL APPROVAL

CA10437