

IF IT IS FOUND DESIRABLE TO CHANGE ANY TOLERANCE OR OTHER DETAIL SPECIFIED ON THIS DRAWING NOTIFY THE PURCHASER PROMPTLY.

MAXIMUM ALLOWABLE TOLERANCES HAVE BEEN DETERMINED AND DEVIATIONS WILL BE CAUSE FOR REJECTION. REMOVE ALL BURRS AND SHARP EDGES

CA10423

USED ON

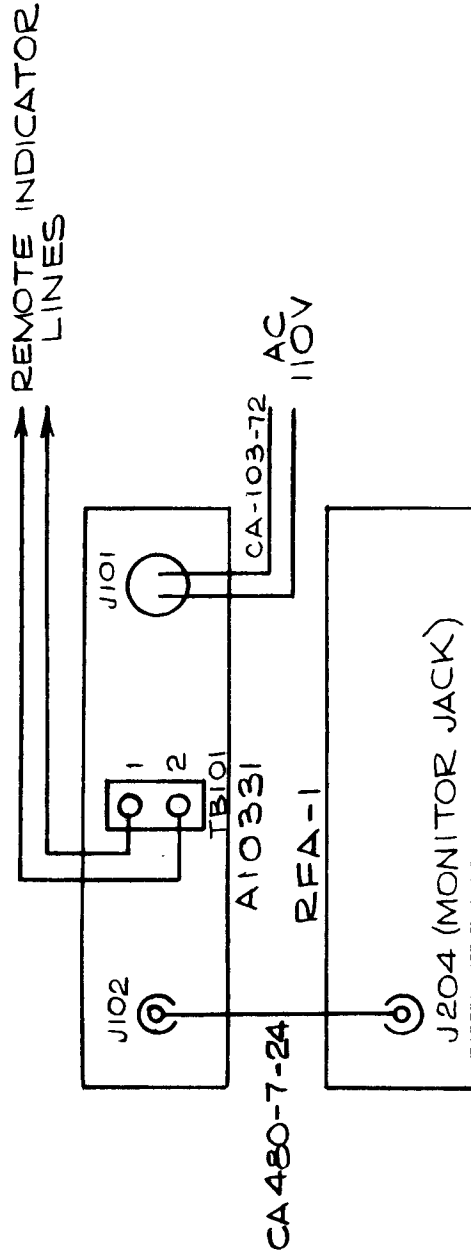
PROJECT NO.

MODEL

ASS'Y. NO.

DATE

MARCH 20 1962



NOTICE TO PERSONS RECEIVING THIS DRAWING

THE TECHNICAL MATERIEL CORPORATION claims proprietary right in the material disclosed hereon. This drawing is issued in confidence for engineering information only and may not be reproduced or used to manufacture anything shown hereon without permission from THE TECHNICAL MATERIEL CORPORATION to the user. This drawing is loaned for mutual assistance and is subject to recall at any time.

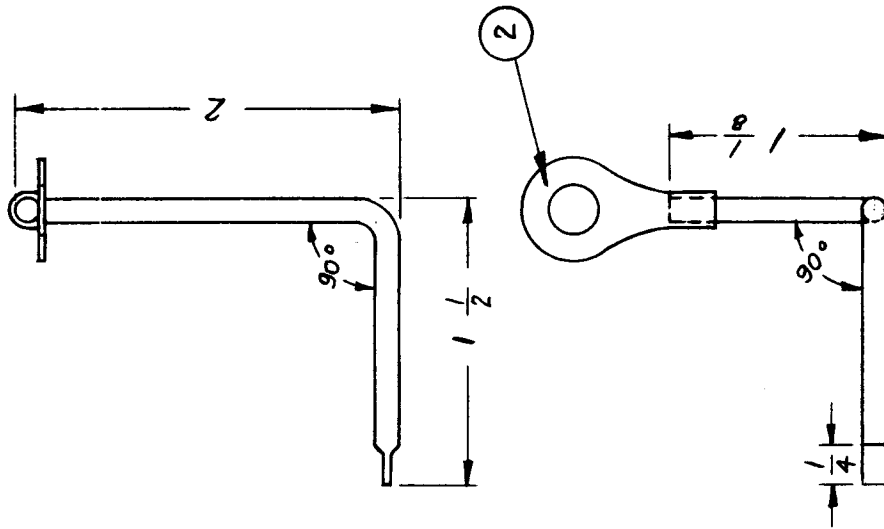
Property of:

THE TECHNICAL MATERIEL CORPORATION
MAMARONECK, NEW YORK

REQ. ITEM	PART NO.	DESCRIPTION	SYMBOL
		TMC (Canada) LIMITED OTTAWA	
		BLOCK DIAGRAM FOR	
		INTERCONNECTING A10331 TO	
		JPC	
		DRAWN	ELEC. DES. APP.
		CHECKED	MECH. DES. APP.
			FINAL APPROVAL
			CA10423

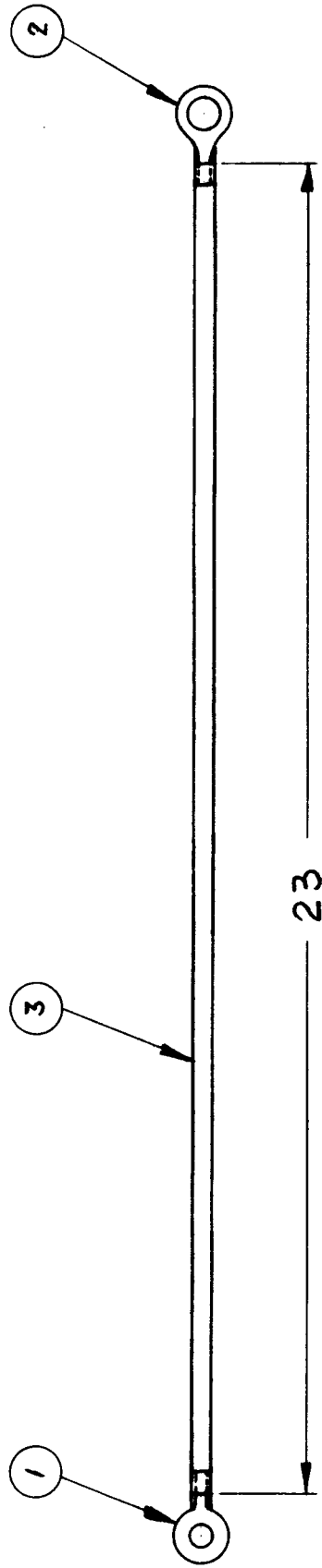
ISSUE	ITEM	CHANGED FROM	DATE	CN. NO.	DRAFTS	CHECKER	ENG. APP.
TOLERANCES							
SCALE							
DIMENSIONS IN INCHES UNLESS OTHERWISE SPECIFIED							
DRILL, PUNCH, COMMERCIAL STOCK SIZES AND MANUFACTURERS TOLERANCES ARE NOT INCLUDED.							
ALL OTHERS	DEC. DIM. ±						
	FRAC. DIM. ±						
	ANGULAR DIM. ±						

ISSUE	ITEM	CHANGED FROM	DATE	CN. NO.	DRAFTS	CHECKER	ENG. APP.	REQ.	ITEM	PART NO.	DESCRIPTION	SYMBOL
A		FINISH ADDED	14-2-66		RD		(RD)	1	1	TU-100-2N	TUBING, COPPER	
								1	2	TE-141-4	LUG, TERMINAL	
									3	BS-100	SOLDER, SOFT	



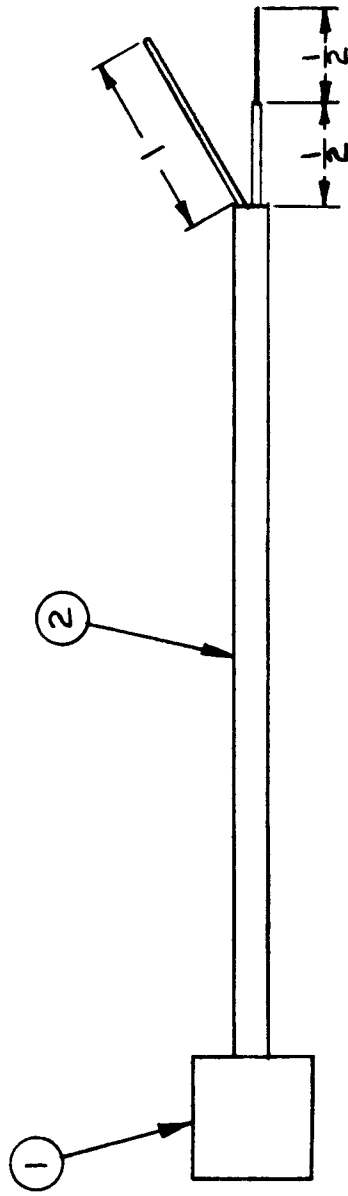
VRA-11	026/65	A-10 361	7-6-65
MODEL	PROJECT NO.	ASSY. NO.	DATE
USED ON			
MAXIMUM ALLOWABLE TOLERANCES HAVE BEEN DETERMINED AND DEVIATIONS WILL BE CAUSE FOR REJECTION. REMOVE ALL BURRS AND SHARP EDGES		IF IT IS FOUND DESIRABLE TO CHANGE ANY TOLERANCE OR OTHER DETAIL SPECIFIED ON THIS DRAWING NOTIFY THE PURCHASER PROMPTLY.	
TOLERANCES			
DEC. DIM. ±	SCALE 1:1		
FRAC. DIM. ±	DIMENSIONS IN INCHES		
ANGULAR DIM. ±	UNLESS OTHERWISE SPECIFIED		
	DRILL, PUNCH, COMMERCIAL STOCK SIZES AND MANUFACTURERS TOLERANCES ARE NOT INCLUDED.		
ALL OTHERS	5103 CADMIUM PLATE FINISH & SPEC. NO.		
	HEAT TREAT. SPEC.		
	TYPE & TEMPER		
	MATERIAL		
	WEIGHT PER PC.		
	STOCK SIZE		
TMC (Canada) LIMITED OTTAWA ONTARIO			
CABLE CONNECTOR			
	Drawn	ELEC. DES. APP.	MECH. DES. APP.
	Checked	FINAL APPROVAL	
		CA - 10 425	
		A	

ISSUE	ITEM	CHANGED FROM	DATE	CH. NO.	DRAFTS	CHECKER	ENG. APP.	REQ.	ITEM	PART NO.	DESCRIPTION	SYMBOL
A		FINISH ADDED	14-2-66		RD		<i>RD</i>	1	1	TE 141-4	TERMINAL, LUG	
B		REV PER CEMN	16-8-66	064	RD	<i>RD</i>	<i>RD</i>	1	2	TE 141-6	TERMINAL, LUG	
C		DIM. 23" WAS 14 3/4	5-24-76	2381	G.D.L.	<i>RD</i>	<i>RD</i>	1	3	HWC 10(37)U9	WIRE, ELECTRICAL	



TMC (Canada) LIMITED OTTAWA ONTARIO		LEAD CONNECTING	
MODEL: <i>VRA-11/12</i> PROJECT NO.: <i>026/65</i>	ASSY. NO.: <i>ID 10 448</i> DATE: <i>12-8-65</i>	STOCK SIZE	WEIGHT PER PC.
IF IT IS FOUND DESIRABLE TO CHANGE ANY TOLERANCE OR OTHER DETAIL SPECIFIED ON THIS DRAWING NOTIFY THE PURCHASER PROMPTLY.		MATERIAL	TYPE & TEMPER
MAXIMUM ALLOWABLE TOLERANCES HAVE BEEN DETERMINED AND DEVIATIONS WILL BE CAUSE FOR REJECTION. REMOVE ALL BURRS AND SHARP EDGES		HEAT TREAT. SPEC.	FINISH & SPEC. NO.
TOLERANCES DEC. DIM. ± FRAC. DIM. ± ANGULAR DIM. ±	SCALE <i>2:1</i> DIMENSIONS IN INCHES UNLESS OTHERWISE SPECIFIED DRILL, PUNCH, COMMERCIAL STOCK SIZES AND MANUFACTURERS TOLERANCES ARE NOT INCLUDED.	DRAWN: <i>Aug.</i> ELEC. DES. AP. <i>KA</i> MECH. DES. APP. <i>KA</i>	CHECKED: <i>1/10/67</i> FINAL APPROV. <i>KA</i>
ALL OTHERS	CA 10 426	C	

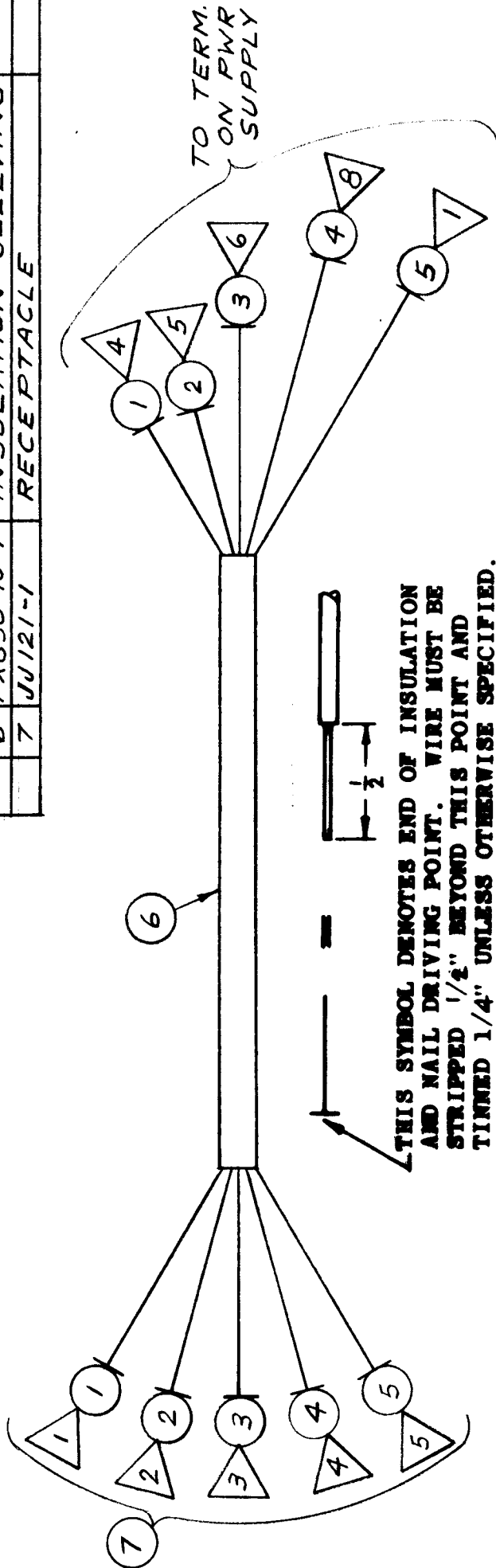
ISSUE	ITEM	CHANGED FROM	DATE	CN. NO.	DRAFTS	CHECKER	ENG. APP.	REQ.	ITEM	PART NO.	DESCRIPTION	SYMBOL
Ø		REL TO PROD.	APRIL 14/66		GAM			1	1	PL 224	CONNECTOR, PLUG	
A		PL 224 WAS PL 244	JUNE 17/66		GAM			A.R. 2	2	RG 58C/U	CABLE, COAXIAL	



PART NO. CA10452 - LENGTH
 -10 FT. OR UNDER LENGTH IS GIVEN IN INCHES.
 -OVER 10 FT. THE LENGTH IS GIVEN IN FEET
 TO THE NEAREST 1/2 FOOT.

AGG10001	050/66	PROJECT NO.	APRIL 14/66	DATE	TMC (Canada) LIMITED OTTAWA	
MODEL		ASS'Y. NO.	USED ON		CABLE, TEST EQUIPMENT	
MAXIMUM ALLOWABLE TOLERANCES HAVE BEEN DETERMINED AND DEVIATIONS WILL BE CAUSE FOR REJECTION. REMOVE ALL BURRS AND SHARP EDGES			IF IT IS FOUND DESIRABLE TO CHANGE ANY TOLERANCE OR OTHER DETAIL SPECIFIED ON THIS DRAWING NOTIFY THE PURCHASER PROMPTLY.			
TOLERANCES			SCALE NTS			
DEC. DIM. ±			DIMENSIONS IN INCHES UNLESS OTHERWISE SPECIFIED			
FRAC. DIM. ± 1/64			DRILL, PUNCH, COMMERCIAL STOCK SIZES AND MANUFACTURERS TOLERANCES ARE NOT INCLUDED.			
ANGULAR DIM. ±			MATERIAL			
			WEIGHT PER FC.			
			TYPE & TEMPER			
			HEAT TREAT. SPEC.			
			FINISH & SPEC. NO.			
			DRAWN			
			ELEC. DES. APP.			
			MECH. DES. APP.			
			CHECKED			
			FINAL APPROVAL			
			AUBREY			
			CA10452			

ISSUE	ITEM	CHANGED FROM	DATE	CN. NO.	DRAFTS	CHECKER	ENG. APP.	REQ.	ITEM	PART NO.	DESCRIPTION	SYMBOL
0		REL TO PROD	21-6-66		RD		(RD)		1	MWC 18(16)U1	WIRE ELEC. INSUL	
									2	MWC 18(16)U2	WIRE ELEC. INSUL	
									3	MWC 18(16)U3	WIRE ELEC. INSUL	
									4	MWC 18(16)U4	WIRE ELEC. INSUL	
									5	MWC 18(16)U5	WIRE ELEC. INSUL	
									6	PX830-10-1	INSULATION SLEEVING	
									7	JU121-1	RECEPTACLE	

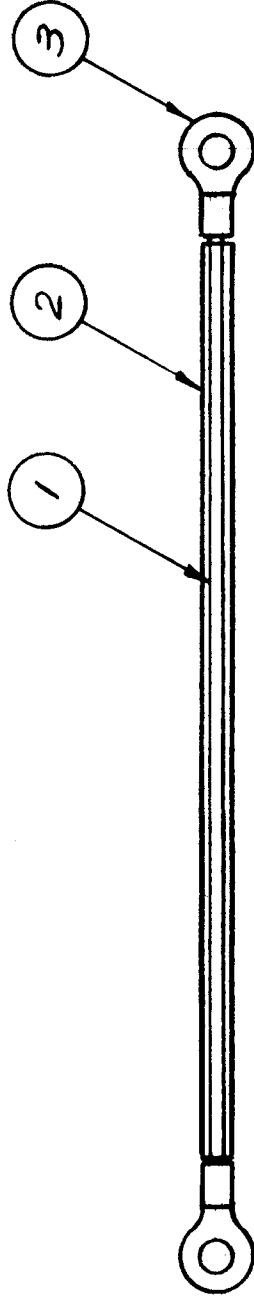


△ INDICATES TERM OR PIN NO.


REF: CK 10500

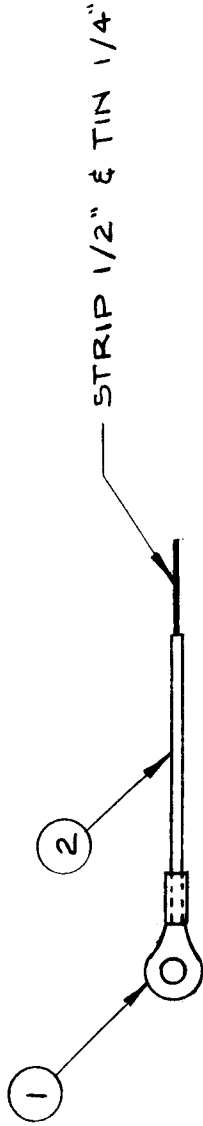
AX 10025	050/66	PROJECT NO.	21 JUNE 66	DATE
MODEL		ASSY. NO.		
USED ON				
MAXIMUM ALLOWABLE TOLERANCES HAVE BEEN DETERMINED AND DEVIATIONS WILL BE CAUSE FOR REJECTION. REMOVE ALL BURRS AND SHARP EDGES		IF IT IS FOUND DESIRABLE TO CHANGE ANY TOLERANCE OR OTHER DETAIL SPECIFIED ON THIS DRAWING NOTIFY THE PURCHASER PROMPTLY.		
TOLERANCES				
DEC. DIM. ±	SCALE 1" = 1'			
FRAC. DIM. ±	DIMENSIONS IN INCHES UNLESS OTHERWISE SPECIFIED			
ANGULAR DIM. ±	DRILL, PUNCH, COMMERCIAL STOCK SIZES AND MANUFACTURERS TOLERANCES ARE NOT INCLUDED.			
ALL OTHERS				
TMC (Canada) LIMITED		ONTARIO		
OTTAWA		CABLE ASSY		
PWR SUPPLY		RD		
DRAWN		ELEC. DES. APP. (RD)		
CHECKED		MECH. DES. APP.		
AUBREY		NUML APPROVAL		
CA10458		∅		

ISSUE	CHANGED FROM	DATE	CH. NO.	DRAFTS	CHECKER	ENG. APP.	REQ.	ITEM	PART NO.	DESCRIPTION	SYMBOL
Ø	REL TO PROD	23-8-66		RD		(RD)	5 1/2	1	TU 100-2N	WIRE, COPPER	
							4 3/4	2	PX 370-8-7	SLEEVING, TEFLON	
							2	3	TE141-3	LUGS, TERMINAL	



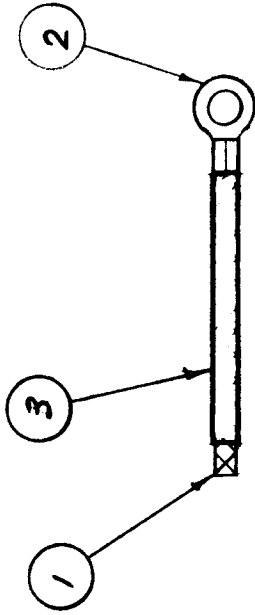
KIT 10005		PROJECT NO.		ASSY. NO.		DATE		23 AUG 66	
MODEL					USED ON				
MAXIMUM ALLOWABLE TOLERANCES HAVE BEEN DETERMINED AND DEVIATIONS WILL BE CAUSE FOR REJECTION. REMOVE ALL BURRS AND SHARP EDGES					IF IT IS FOUND DESIRABLE TO CHANGE ANY TOLERANCE OR OTHER DETAIL SPECIFIED ON THIS DRAWING NOTIFY THE PURCHASER PROMPTLY.				
TOLERANCES					SCALE 1:1				
DEC. DIM. ±		DIMENSIONS IN INCHES			UNLESS OTHERWISE SPECIFIED				
FRAC. DIM. ±		DRILL, PUNCH, COMMERCIAL STOCK			SIZES AND MANUFACTURERS				
ANGULAR DIM. ±		TOLERANCES ARE NOT INCLUDED.							
ALL OTHERS									
TMC (Canada) LIMITED			ONTARIO			RD			
OTTAWA			CABLE, OUTPUT			CONNECTING			
DRAWN			ELEC. DES. DIV.			MECH. DES. APP.			
CHANGED			PINK APPROVAL						
MATCH			CA10465			Ø			
FINISH & SPEC. NO.									
HEAT TREAT. SPEC.									
TYPE & TEMPER									
MATERIAL									
STOCK SIZE									
WEIGHT PER PC.									

ISSUE	CHANGED FROM	DATE	CN. NO.	DRAFTS	CHECKER	ENG. APP.	REQ.	ITEM	PART NO.	DESCRIPTION	SYMBOL
Ø	RELEASED TO PROD.	OCT. 7/66		RPL			1	1	TE156-32951	LUG, TERMINAL SOLDERLESS	
							2	2	MWC22(7)UO	WIRE, ELECTRICAL INSULATED	



AMC-20-16	PROJECT NO. 020/66	DATE OCT. 7/66	ASSY. NO.	USED ON
MODEL				
MAXIMUM ALLOWABLE TOLERANCES HAVE BEEN DETERMINED AND DEVIATIONS WILL BE CAUSE FOR REJECTION. REMOVE ALL BURRS AND SHARP EDGES		IF IT IS FOUND DESIRABLE TO CHANGE ANY TOLERANCE OR OTHER DETAIL SPECIFIED ON THIS DRAWING NOTIFY THE PURCHASER PROMPTLY.		
TOLERANCES		SCALE 1:1		
DEC. DIM. ±		DIMENSIONS IN INCHES UNLESS OTHERWISE SPECIFIED		
FRAC. DIM. ± 1/Ø		DRILL. PUNCH. COMMERCIAL STOCK SIZES AND MANUFACTURERS TOLERANCES ARE NOT INCLUDED.		
ANGULAR DIM. ±				
ALL OTHERS				
TMC (Canada) LIMITED OTTAWA		CABLE, JUMPER ASSY.		
RPL		DRAWN		
DKJ		ELEC. DES. APP. MECH. DES. APP.		
JACOBS		CHECKED		
CA 10466		PVAL-APPROVAL		
Ø				

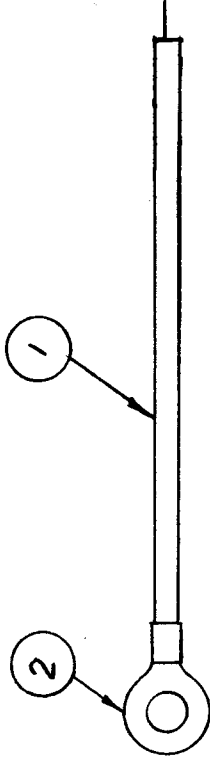
ISSUE	ITEM	CHANGED FROM	DATE	CM. NO.	DRAFTS	CHECKER	ENG.	REQ.	ITEM	PART NO.	DESCRIPTION	SYMBOL
Ø		RELEASE TO PROD	2/8		AP	Ø	W	2 1/4	1	WL103-3	WIRE BRAIDED	
								1	2	TE141-1	LUG TERMINAL	
								15/8	3	PX370-9-7	SLEEVING, TEFLON	



NOTE:
ITEM "2" TO BE CRIMPED & SOLDERED
TO ITEM "1".

AX10033	053/67	A10582	15 MAR 67
MODEL	PROJECT NO.	ASSY. NO.	DATE
USED ON			
MAXIMUM ALLOWABLE TOLERANCES HAVE BEEN DETERMINED AND DEVIATIONS WILL BE CAUSE FOR REJECTION. REMOVE ALL BURRS AND SHARP EDGES		IF IT IS FOUND DESIRABLE TO CHANGE ANY TOLERANCE OR OTHER DETAIL SPECIFIED ON THIS DRAWING NOTIFY THE PURCHASER PROMPTLY.	
TOLERANCES		SCALE NTS	
DEC. DIM. ±	DIMENSIONS IN INCHES UNLESS OTHERWISE SPECIFIED		
FRAC. DIM. ±	DRILL, PUNCH, COMMERCIAL STOCK SIZES AND MANUFACTURERS TOLERANCES ARE NOT INCLUDED.		
ANGULAR DIM. ±			
ALL OTHERS			
TMC (Canada) LIMITED OTTAWA		ONTARIO	
CABLE ASSY			
MATERIAL		WEIGHT PER PC.	
TYPE & TEMPER		HEAT TREAT. SPEC.	
FINISH & SPEC. NO.			
RD	DRAWN	ELEC. DES. IN CH.	SEC. DES. APP.
	CHECKED	FINAL APPROVAL	
		CA10486	

ISSUE	ITEM	CHANGED FROM	DATE	CN. NO.	DRAFTS	CHECKER	ENG. APP.	REQ.	ITEM	PART NO.	DESCRIPTION	SYMBOL
X2		REV AS PER EDC	24-9 26-7	5000	AP	RPL	<i>[Signature]</i>	3	1	HWC 22(7)U2	WIRE, ELEC. INSUL.	
Ø		REL TO PROD	JAN 2/68		RPL			1	2	TE156-3A149	TERM SOLDERLESS	



AX10033	053/67	A10577	15 MAR 67
MODEL	PROJECT NO.	ASS'Y. NO.	DATE
USED ON			
<p>MAXIMUM ALLOWABLE TOLERANCES HAVE BEEN DETERMINED AND DEVIATIONS WILL BE CAUSE FOR REJECTION. REMOVE ALL BURRS AND SHARP EDGES</p>		<p>IF IT IS FOUND DESIRABLE TO CHANGE ANY TOLERANCE OR OTHER DETAIL SPECIFIED ON THIS DRAWING NOTIFY THE PURCHASER PROMPTLY.</p>	
<p>TOLERANCES</p> <p>DEC. DIM. ±</p> <p>FRAC. DIM. ± 1/16</p> <p>ANGULAR DIM. ±</p>		<p>SCALE N T S</p> <p>DIMENSIONS IN INCHES UNLESS OTHERWISE SPECIFIED</p> <p>DRILL, PUNCH, COMMERCIAL STOCK SIZES AND MANUFACTURERS TOLERANCES ARE NOT INCLUDED.</p>	
ALL OTHERS			
<p>STOCK SIZE</p>		<p>WEIGHT PER PC.</p>	
<p>MATERIAL</p>		<p>TYPE & TEMPER</p>	
<p>DRAWN</p>		<p>ELEC. DES. APP.</p>	
<p>CHECKED</p>		<p>MEC. DES. APP.</p>	
<p>RD</p>		<p>FINAL APPROVAL</p>	
<p>TMC (Canada) LIMITED OTTAWA</p>		<p>WIRE JUMPER</p>	
		<p>CA10488</p>	