

IF IT IS FOUND DESIRABLE TO CHANGE ANY TOLERANCE OR OTHER DETAIL SPECIFIED ON THIS DRAWING NOTIFY THE PURCHASER PROMPTLY.

MAXIMUM ALLOWABLE TOLERANCES HAVE BEEN DETERMINED AND DEVIATIONS WILL BE CAUSE FOR REJECTION. REMOVE ALL BURRS AND SHARP EDGES

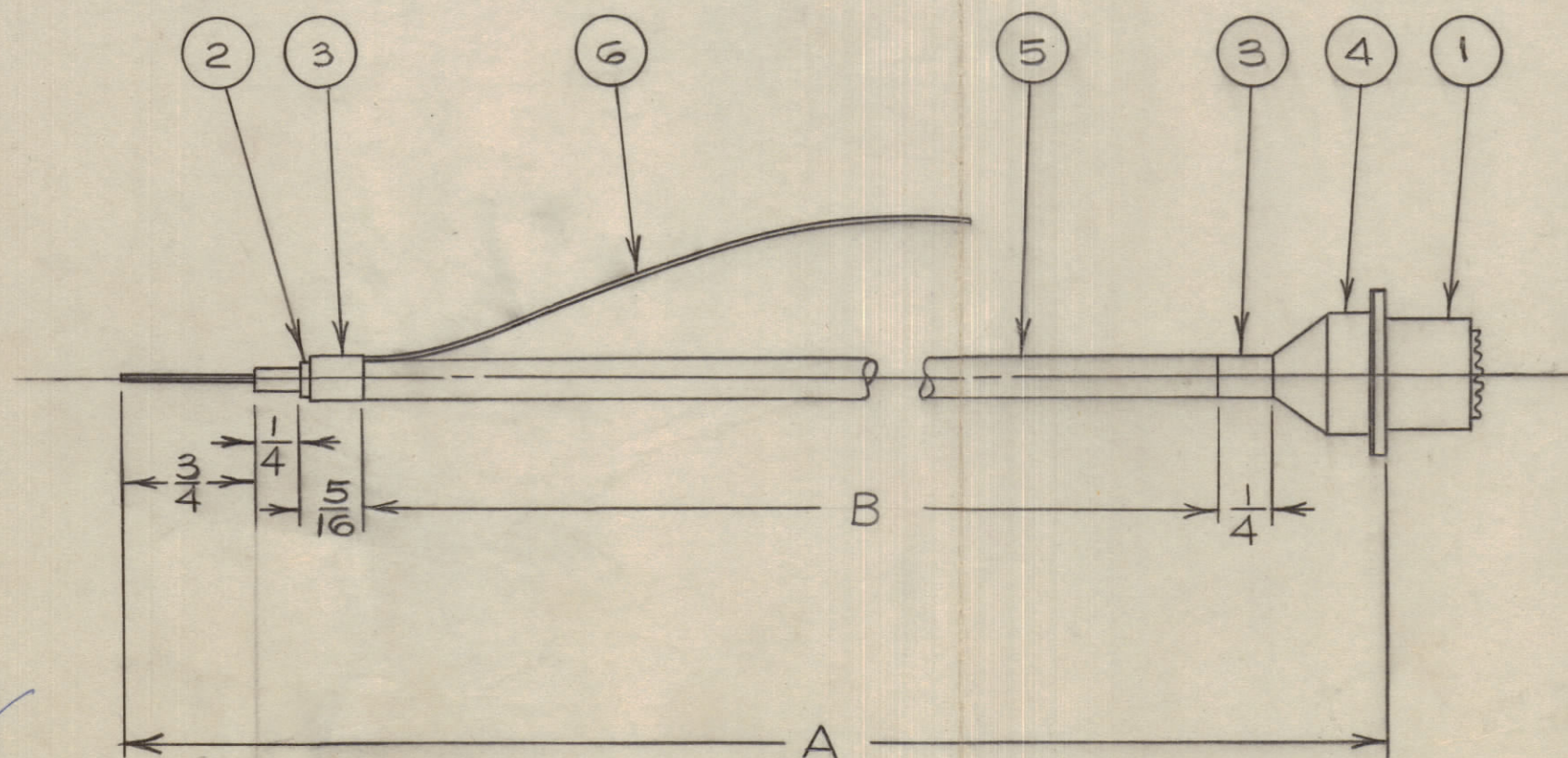
NOTICE TO PERSONS RECEIVING THIS DRAWING

THE TECHNICAL MATERIEL CORPORATION claims proprietary right in the material disclosed hereon. This drawing is issued in confidence for engineering information only and may not be reproduced or used to manufacture anything shown hereon without permission from THE TECHNICAL MATERIEL CORPORATION to the user. This drawing is loaned for mutual assistance and is subject to recall at any time.

Property of:
THE TECHNICAL MATERIEL CORPORATION
MAMARONECK, NEW YORK

TMC PART NO.	DIMENSION "A"	MODEL	QTY.	MODEL	QTY.	MODEL	QTY.	DTM B
CA-10124- 1	14 1/8" ± 1/8"	DA-101	1					11 3/4"
- 2	5 3/8" ± 1/8"	DA-101	10	AMC 6-5	1			3 1/4"
- 3								
- 4	9" ± 1/8"	AMC 6-5	6					6 3/4"
- 5	7 1/2" ± 1/8"	AMC 6-3	4					5 5/16" ± 1/16"
- 6	9 3/8" ± 1/8"	AMC 6-3	3					7 3/8" ± 1/16"
- 7	7 3/4" ± 1/8"	AMC 6-2	6					5 1/4"
- 8								
- 9								
-10								
-11								
-12								
-13								
-14								
-15								
-16								
-17								
-18								
-19								
-20								
-21								
-22								
-23								
-24								
-25								
-26								
-27								
-28								
-29								
-30								
-31								
-32								
-33								
-34								

CA10124 D



2	6	WL 100-7	WIRE TINNED #22 COPPER	
-	5	RG-59/U	CABLE	
1	4	UG-177/U	HOOD	
2	3	CU101-4	CONNECTOR BURNDY	
1	2	CU101-3	" " " "	
1	1	SO-239	" " " " AMPHENOL	
REQ.	ITEM	PART NO.	DESCRIPTION	SYMBOL
			TMC (Canada) LIMITED OTTAWA ONTARIO	
			CABLE ASSEMBLY	
STOCK SIZE				
MATERIAL		WEIGHT PER PC.		
TYPE & TEMPER		JPC		
DRAWN		ELEC. DES. APP.	MECH. DES. APP.	
HEAT TREAT. SPEC.		CHECKED		
FINISH & SPEC. NO.		FINAL APPROVAL		
		CA10124 D		

D	CA-10124-5 & 6 "A" & "B" DIM. CLARIFIED	OCT. 16/62	10	JPC	JPC	JPC	
C	DIM. B ADDED DIM. A CHANGED	NOV. 8/61		JPC	JPC	JPC	
B	CA10124-7 ADDED	4/28/61		JPC	JPC	JPC	
A	SUP - CA10084, CA10085 & CA10124	JAN. 10/61		JPC	JPC	JPC	
ISSUE	ITEM	CHANGED FROM	DATE	CN. NO.	DRAFTS	CHECKER	ENG. APP.
TOLERANCES			SCALE:				
ALL OTHERS		DEC. DIM. ± FRAC. DIM. ± ANGULAR DIM. ±	DRILL, PUNCH, COMMERCIAL STOCK SIZES AND MANUFACTURERS TOLERANCES ARE NOT INCLUDED.				

MODEL	PROJECT NO.	ASS'Y. NO.	DATE
			JAN. 10/61