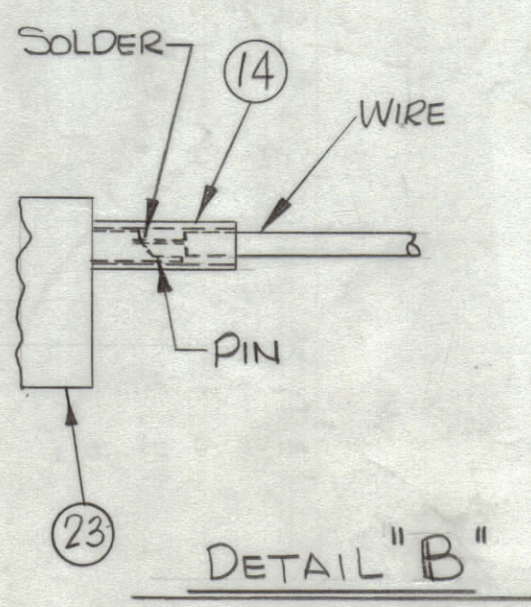


REVISIONS						
ZONE	SYM	DESCRIPTION	DATE	E.M.N. NO.	DRAFT	CHKD
X	1	DELETED CHART; ADD. TMC P/N NOTE; ADD. ITEMS 26, 27; ON IT. 20, 21, ADD. "133" & "6A"	11/1/65	X	HLA	
		ORIGINAL RELEASE FOR PRODUCTION	11/17/65			
A		IT 9 WAS MWC 22 (7) SJ6, IT 12 WAS TM 105-12 AR, IT 28 WAS ADDED TO B/M.	12/1/65	15378	X.V.	
B		ITEM 24 WAS LA107-CA1094	1/20/66	15609	JL	
C		TB1500, 1501, 1502 ADDED, IT. 27 WAS TE 120-2, IT. 1 WAS MWC 22 (7) U0, ADDED TO IT. 11	2-9-66	15718		

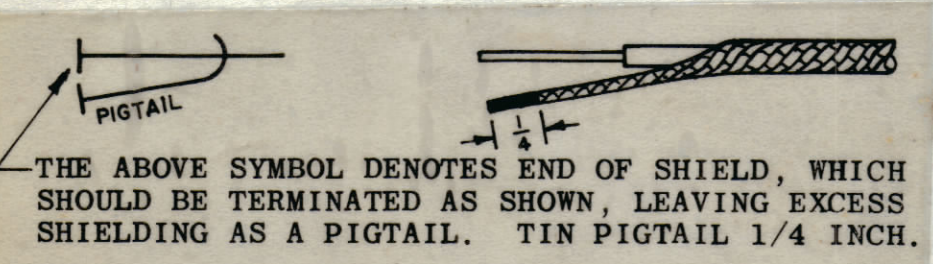
TMC PART NO. TO BE IN FOLLOWING FORM:

CA1094 - 60
 BASIC PT. NO. DIM. "A"
 LENGTH IN INCHES

NOTE: THIS DIMENSION NOT TO EXCEED 72 INCHES IN LENGTH.



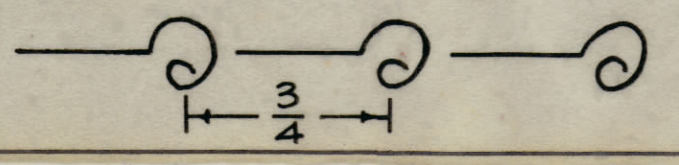
- SYMBOL DENOTES**
- = ITEM NOS.
 - △ = PIN NOS.
 - ⬡ = TERMINAL LUG



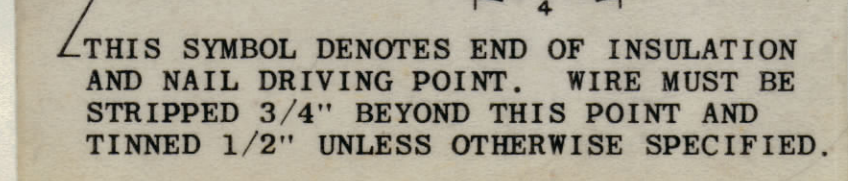
UNLESS OTHERWISE SPECIFIED WIRES SHOULD BE PLACED IN CABLE IN NUMERICAL SEQUENCE AS THEY APPEAR IN ITEM COLUMN BY CATEGORY.

- ALL R.F. CABLES
- ALL SHIELDED CABLES
- ALL OTHERS

SPACE LACING APPROXIMATELY 3/4" APART.



NOTES



REQ'D.	ITEM	PART NUMBER	DESCRIPTION	SYMBOL
2	28	TM105-12AR	TERMINAL BD, FANNING	
1	27	DELETED	TERMINAL BD, FANNING	
3	26	FWOGHBN	WASHER, FLAT	
X	25	BS100	SOLDER, TIN ALLOY	
1	24	LA107-12-CA1094	SLEEVE, MARKER, CABLE	
1	23	PL212-3	CONNECTOR, PLUG, MALE	
X	22	CD101-1MW	CORD, NYLON, LACING	
1	21	MS3420-6A	BUSHING, RUBBER	
X	20	PX100-1-133	INS, SLEEVING	
3	19	NTHOG32BN8	NUT, PLAIN, HEX	
3	18	LWE06MRN	WASHER, LOCK, EXT	
3	17	SCBP0632BN7	SCREW, MACHINE	
2	16	CU102-4	CLAMP, LOOP	
1	15	CU102-2	CLAMP, LOOP	
X	14	PX830-18-1	INS SLEEVING	
1	13	TM105-11-AL	TERMINAL BD, FANNING	
	12	MWC22 (7) SJ6	CABLE, SP, SHLD/JKT	
	11	MWC22 (7) U90	WIRE, ELEC, INSULATED	
	10		SJ9	CABLE, SP, SHLD/JKT
	9		U8	WIRE, ELEC, INSULATED
	8		U7	WIRE, ELEC, INSULATED
	7		U7	WIRE, ELEC, INSULATED
	6		SJ5	CABLE, SP, SHLD/JKT
	5		U4	WIRE, ELEC, INSULATED
	4		U3	
	3		U2	
	2	MWC22 (7) U1	WIRE ELEC, INSULATED	
	1	DELETED	WIRE ELEC, INSULATED	

POSE		LIST OF MATERIAL			
MATERIAL		THE TECHNICAL MATERIEL CORP. MAMARONECK, NEW YORK			
FINISH		WIRING HARNESS, BRANCHED			
UNLESS OTHERWISE SPECIFIED DIMENSIONS ARE IN INCHES AND INCLUDE CHEMICALLY APPLIED OR PLATED FINISHES		DRAWN H. AUSTIN	DATE 9/24/65	FINAL APPROVAL [Signature]	DATE 11/17/65
DECIMALS .x ± .05 .xx ± .01 .xxx ± .005		CHECKED [Signature]	DATE 11/17/65	DATE	DATE
FRACTIONS ± 1/64 ANGLES ± 0° 30'		ELECT. DES. A. [Signature]	DATE	DATE	DATE
TOLERANCES		MECH. DES. [Signature]	DATE	DATE	DATE
THE CONTENTS OF THIS DRAWING ARE THE EXCLUSIVE PROPERTY OF THE TECHNICAL MATERIEL CORP. ITS UNAUTHORIZED USE OR REPRODUCTION IN WHOLE OR IN PART IS STRICTLY FORBIDDEN.		SHEET		REV. LTR.	
SCALE 1:1		MODEL USED ON TPCA-1		ASS'Y. NO.	
CODE A		DATE		DATE	

CA1094

CA1094