

THIS SYMBOL DENOTES END OF INSULATION AND NAIL DRIVING POINT. WIRE MUST BE STRIPPED 3/4" BEYOND THIS POINT AND TINNED 1/2" UNLESS OTHERWISE SPECIFIED.

WIRES SHOULD BE PLACED IN CABLE IN NUMERICAL SEQUENCE AS THEY APPEAR IN ITEM COLUMN BY CATEGORY @ ALL RF CABLES @ ALL SHIELDED CABLES @ ALL OTHERS

— SYMBOL NOTES —

○ DENOTE ITEM NO.

△ DENOTE PIN NO.

□ DENOTES BREAKOUT POINT

ZONE		SYM		DESCRIPTION		DATE		EM.N. NO.		DRAFT		CHKD		APPO	
				ORIGINAL RELEASE FOR PRODUCTION		3/2/65				CJL					

REQ'D	ITEM	PART NUMBER	DESCRIPTION	SYMBOL
1	58	MS3798	PLATE, ADAPTER	
X	57	BS100	SOLDER, SOFT	
X	56	CD101-1MW	CORD, LACING	
X	55	PX830-18-1	SLEEVING, INSULATION	
1	54	JJ200-2	CONNECTOR, RECEPTACLE	J1305
1	53	JJ242-5-S	CONNECTOR, RECEPTACLE	J1317
1	15	MWC22 (7) U9	J1305 PIN M	J1305 PIN J
1	15	20 (7) U1	J1305 PIN R	A3631, L1305
1	3	48	20 (7) U91	J1305 PIN F
5	9	47	20 (7) U0	XV1301 GRD
14	17	46	20 (7) U2	J1306 PIN 8
13	18	45	20 (7) U96	A3631, C1314
2	19	44	20 (7) U3	A3648 TERM 4
11	11	42	22 (7) U5	T1302 PIN 5
1	3	39	20 (7) U91	A3648 TERM 1
3	14	38	22 (7) U92	T1302 PIN 7
3	9	37	20 (7) U91	A3648 TERM 2
6	9	36	22 (7) U97	R1322 TERM
8	11	35	22 (7) U9	XV1304 PIN 8
8	10	34	22 (7) U2	J1317 PIN F
8	11	33	22 (7) U90	J1305 PIN L
9	11	32	22 (7) U97	XV1303 GRD
10	11	31	22 (7) U2	J1306 PIN 5
8	9	30	22 (7) U9	A3631 R1334
5	10	29	20 (7) U1	XV1303 GRD
3	9	28	20 (7) U0	J1306 PIN 15
9	12	27	20 (7) U1	XV1303 GRD
4	5	26	20 (7) U1	J1306 PIN 14
9	18	24	20 (7) U98	A3631 L1305
3	9	23	22 (7) U92	XV1302 PIN 3
10	14	22	22 (7) U2	J1306 PIN 1
11	11	21	20 (7) U95	XV1301 PIN 5
2	18	20	20 (7) U6	J1306 PIN 10
12	17	19	20 (7) U7	TERM, STANDOFF
11	11	18	20 (7) U0	A3631 R1335
1	16	17	22 (7) U90	J1317 PIN 2
11	13	16	22 (7) U7	A3648 TERM 3
1	15	15	20 (7) U98	A3648 TERM 8
3	12	14	20 (7) U98	GRD
1	16	13	20 (7) U8	J1317 PIN P
3	13	12	20 (7) U8	J1305 PIN N
1	15	11	20 (7) U1	A3631 L1336
4	12	10	20 (7) U1	J1317 PIN N
1	16	9	22 (7) U9	A3631 R1335&36
8	13	8	22 (7) U9	J1305 PIN B
1	16	7	22 (7) U2	A3631 L1308
3	17	6	20 (7) U0	T1302 PIN 4
9	14	5	22 (7) U2	J1305 PIN A
10	11	4	20 (7) U7	A3631 L1307
10	11	3	20 (7) U1	J1305 PIN I
1	16	2	22 (7) U6	A3631 L1307
11	14	1	MWC22 (7) U6	J1305 PIN E
11	14	1	MWC22 (7) U6	XV1302 PIN 3
11	14	1	MWC22 (7) U6	J1305 PIN 3
11	14	1	MWC22 (7) U6	J1305 PIN M
11	14	1	MWC22 (7) U6	A3631 L1305
11	14	1	MWC22 (7) U6	A3631 L1310
11	14	1	MWC22 (7) U6	A3631 L1310
11	14	1	MWC22 (7) U6	J1305 PIN K
11	14	1	MWC22 (7) U6	A3631 L1302
11	14	1	MWC22 (7) U6	XV1303 GRD
11	14	1	MWC22 (7) U6	A3648 TERM 7
11	14	1	MWC22 (7) U6	J1306 PIN 13
11	14	1	MWC22 (7) U6	A3631 L1303
11	14	1	MWC22 (7) U6	J1305 PIN C
11	14	1	MWC22 (7) U6	A3631 L1309
11	14	1	MWC22 (7) U6	XV1304 PIN 9
11	14	1	MWC22 (7) U6	J1317 PIN R
11	14	1	MWC22 (7) U6	J1305 PIN P
11	14	1	MWC22 (7) U6	A3631 L1304
11	14	1	MWC22 (7) U6	J1317 PIN Hg
11	14	1	MWC22 (7) U6	A3631 L1304

FROM	TO	REQ'D	ITEM	PART NUMBER	DESCRIPTION	SYMBOL
		1	58	MS3798	PLATE, ADAPTER	
		X	57	BS100	SOLDER, SOFT	
		X	56	CD101-1MW	CORD, LACING	
		X	55	PX830-18-1	SLEEVING, INSULATION	
		1	54	JJ200-2	CONNECTOR, RECEPTACLE	J1305
		1	53	JJ242-5-S	CONNECTOR, RECEPTACLE	J1317
		1	15	MWC22 (7) U9	J1305 PIN M	J1305 PIN J
		1	15	20 (7) U1	J1305 PIN R	A3631, L1305

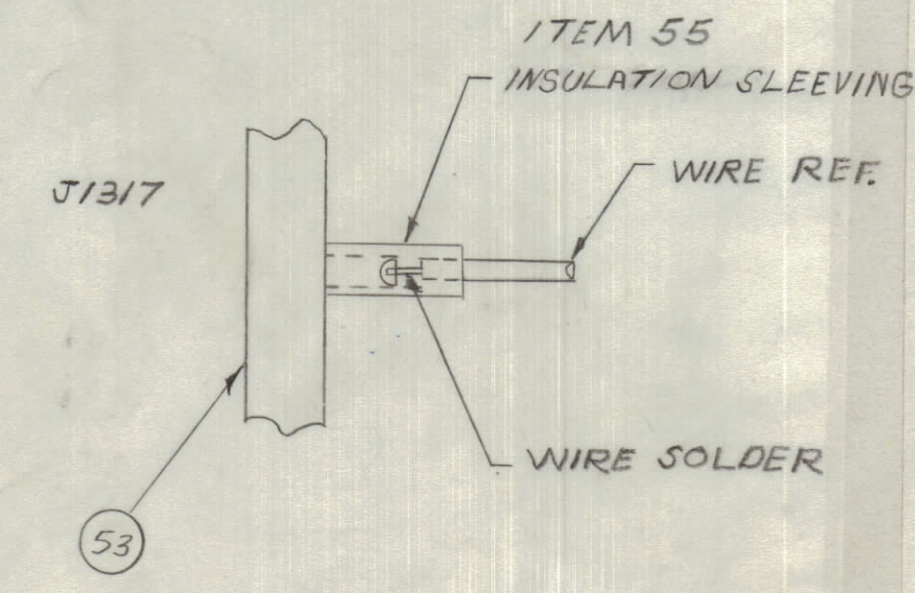
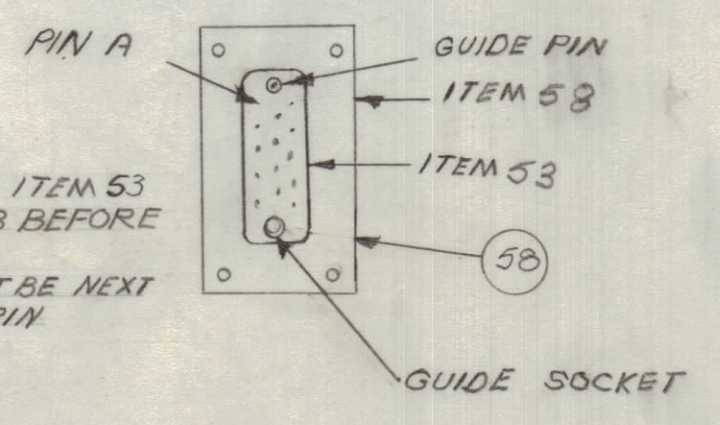
QTY	UNIT	MODEL USED ON	ASSY. NO.
		HFRR-2A	

SCALE	CODE	UNLESS OTHERWISE SPECIFIED DIMENSIONS ARE IN INCHES AND INCLUDE CHEMICALLY APPLIED OR PLATED FINISHES	DRAWN	DATE	FINAL APPROVAL	DATE
			CJL	3/20/65		4/2/65
			JCB	3/27/65		
				3/30/65		

DECIMALS	FRACTIONS	ELECT. DRG.	DATE	MECH. DRG.	DATE
± .05	± 1/64				
± .01	± 1/32				
± .005	± 1/64				

NOTES

NOTE
1. ASSEMBLE ITEM 53 TO ITEM 58 BEFORE WIRING
2. PIN A MUST BE NEXT TO GUIDE PIN



CA1084

THE TECHNICAL MATERIEL CORP.
MAMARONECK, NEW YORK

TITLE
WIRING HARNESS, BRANCHED