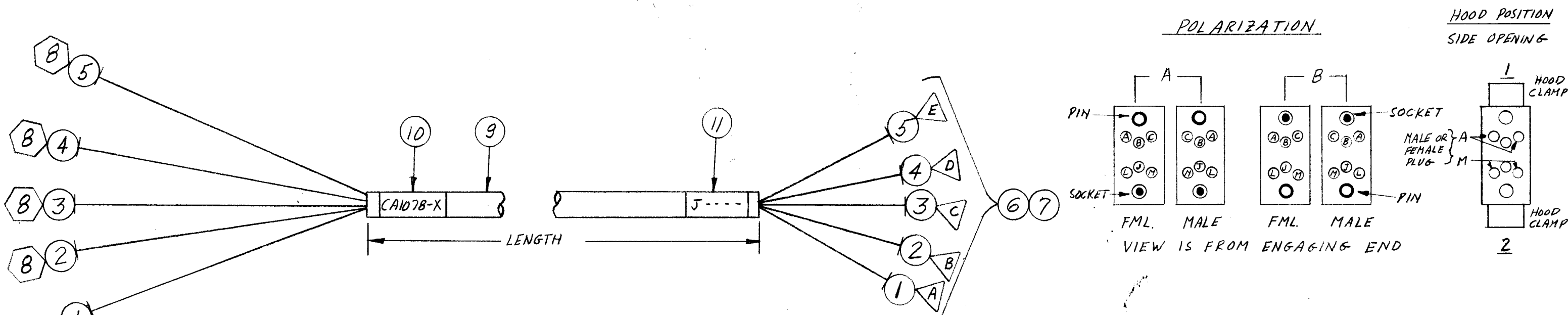


CABLE NO	LENGTH	ITEM 10	ITEM 11	ITEM 6	POLARIZATION	HOOD POSITION	USED ON
CA1078-1	12 FT. 3 in.	LA107-11-CA1078-1	LA107-11-J3031	PL247-25	A	N/A	AX563
CA1078-2	12 FT. 6 in.	LA107-11-CA1078-2	LA107-11-J3029	PL247-25	A	N/A	AX563
CA1078-3	12 FT. 9 in.	LA107-11-CA1078-3	LA107-11-J3027	PL247-25	A	N/A	AX563

REVISIONS						
SYM	DESCRIPTION	DATE	E.M.N. NO.	DRAFT	CHKD	APPD
X	EXPERIMENTAL RELEASE	3-18-65		BMM		
XI	ITEM # 14 ADDED	3/24/65		BMM	GR	
Ø	ORIGINAL RELEASE FOR PRODUCTION	5/11/66		CV		Yude

CA1078



REQ'D	ITEM	PART NUMBER	DESCRIPTION	SYMBOL
	14	TA100-1	INSULATION, TAPE, ELECT.	
	13	CD101-1AW	CORD, NYLON, LACING	
	12	BS100	SOLDER, TIN ALY.	
1	11	SEE CHART	SLEEVE, MARKER, CABLE	
1	10	SEE CHART	SLEEVE, MARKER, CABLE	
	9	PX100-1-208	INSULATION, SLEEVING	
5	8	PL242-1	CONTACT, ELECT, MALE	

REQ'D	ITEM	PART NUMBER	DESCRIPTION	SYMBOL
	7	PX830-18-1	INSULATION, SLEEVING	BLK
1	6	SEE CHART	CONNECTOR, PLUG, FML	
	5	MWC22(7)U0	WIRE, ELEC	
	4			
	3			
	2			
	1	MWC22(7)U1	WIRE, ELEC	

LIST OF MATERIAL			
MATERIAL		THE TECHNICAL MATERIEL CORP. MAMARONECK, NEW YORK	
FINISH		TITLE CABLE, SPECIAL PURPOSE	
UNLESS OTHERWISE SPECIFIED DIMENSIONS ARE IN INCHES AND INCLUDE CHEMICALLY APPLIED OR PLATED FINISHES		DRAWN <i>BMM</i> DATE 3-17-65 CHECKED <i>BMM</i> DATE 7/22/65 ELECT. DES. <i>BMM</i> DATE MECH. DES. <i>BMM</i> DATE	FINAL APPROVAL <i>BMM</i> DATE 5/11/66 CA1078 SHEET REV. LTR.
DECIMALS .X ± .05 .XX ± .01 .XXX ± .005	TOLERANCES ± 1/64 ANGLES ± 0° 30'	M/L <i>ZR</i> 5/10/66	REPROVAL NO. 440H 23888

THIS SYMBOL DENOTES END OF INSULATION AND NAIL DRIVING POINT. WIRE MUST BE STRIPPED 3/4" BEYOND THIS POINT AND TINNED 1/2" UNLESS OTHERWISE SPECIFIED.

**NOTES**

TSTE-10K

Q'TY./UNIT	MODEL USED ON	ASSY. NO.
SCALE	CODE	

THE CONTENTS OF THIS DRAWING ARE THE EXCLUSIVE PROPERTY OF THE TECHNICAL MATERIEL CORP. ITS UNAUTHORIZED USE OR REPRODUCTION IN WHOLE OR IN PART IS STRICTLY FORBIDDEN.