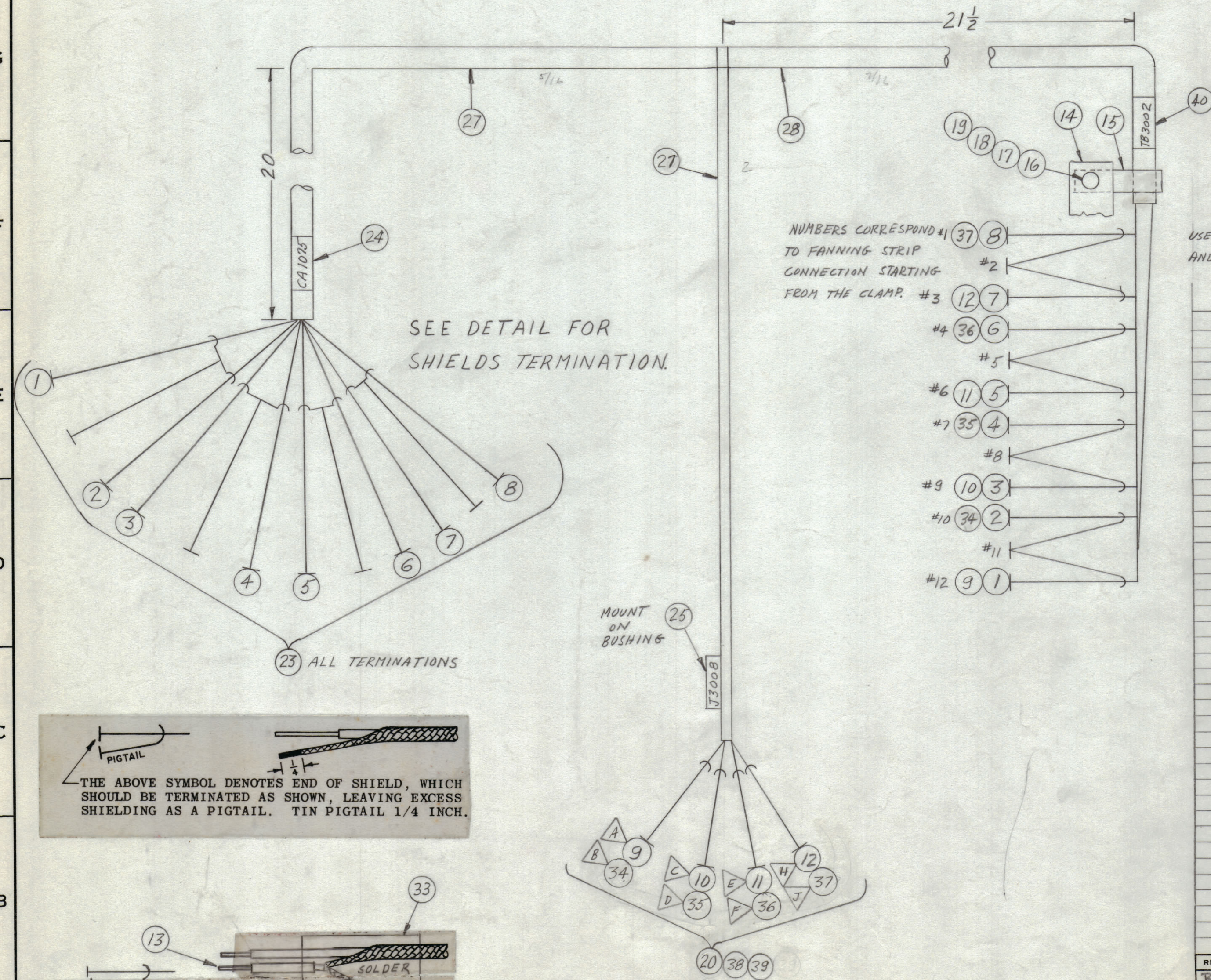


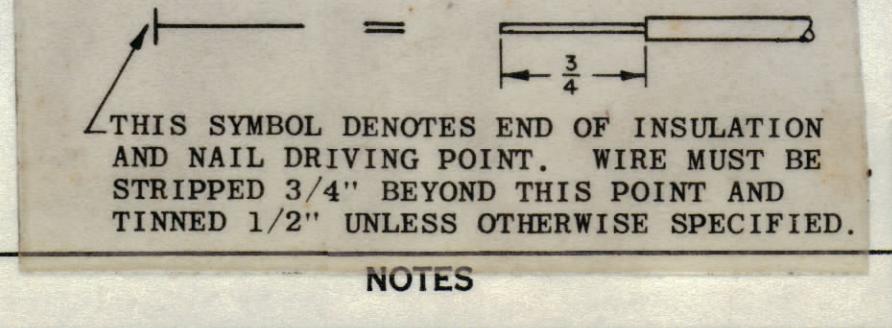
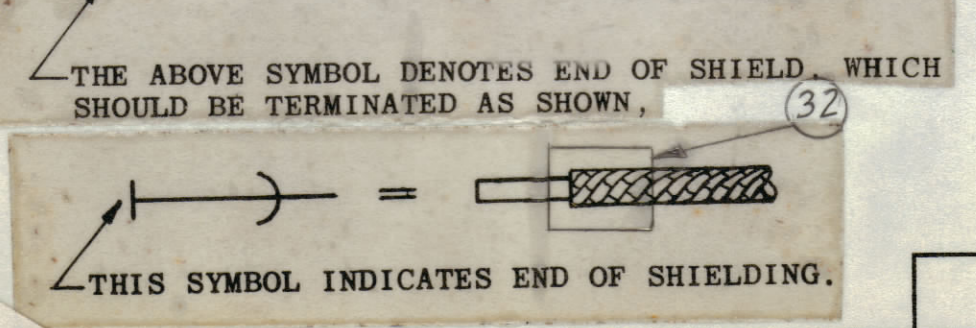
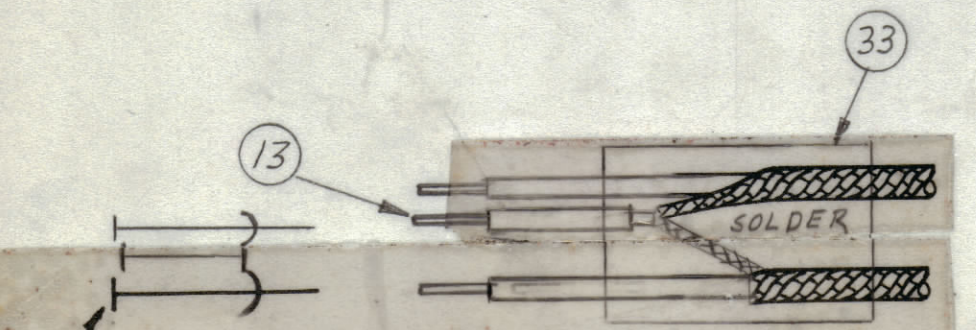
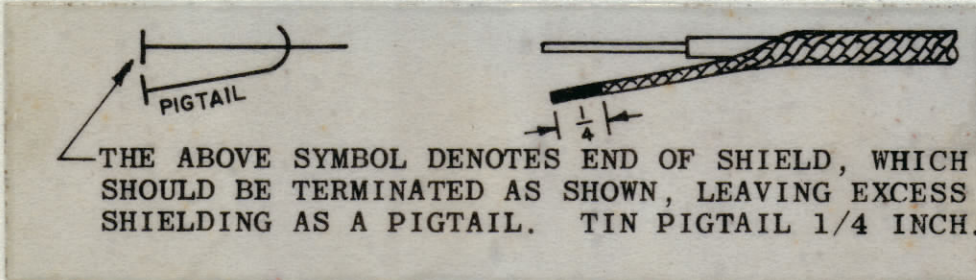
REVISIONS							
ZONE	SYM	DESCRIPTION	DATE	E.M.N. NO.	DRAFT	CHKD	APPD
	X	EXPERIMENTAL RELEASE	3-12-65		BPM		
	XI	ITEM 34-40 ADDED, ITEM 21, 22, 26 DELETED ITEM 28 WAS PX100-1-939 ITEM 20 WAS MS3106A145-25 ITEM 25 WAS LA107-1178 ITEM 15 WAS CUI02-5 DECODED LA107	3-17-65		BPM	AK	
	Ø	ORIGINAL RELEASE FOR PRODUCTION	5/11/66		CLV		



NUMBERS CORRESPOND #1 TO FANNING STRIP CONNECTION STARTING FROM THE CLAMP. #3

USE ENOUGH TAPE TO COVER AND INSULATE LEADS.

REQ'D	ITEM	PART NUMBER	DESCRIPTION	SYMBOL	
1	40	LA107-17-TB3002	SLEEVE, MARKER, CABLE		
1	39	MS3420-12A	BUSHING, RUBBER		
1	38	MS3420-8A	BUSHING, RUBBER		
37	MWC22(7)SJ8	TB3002	J3008	PIN J	
36				F	
35				D	
34	MWC22(9)SJ2	TB3002	J3008	PIN B	
33	PX830-8-1		INSULATION, SLEEVING, SHRINK	BLK	
32	PX830-12-1		INSULATION, SLEEVING, SHRINK	BLK	
31	TA100-1		INSULATION TAPE, ELECT. PLASTIC		
30	CD101-1MW		CORD, NYLON, LACING		
29	B5100		SOLDER, TIN ALLOY		
28	PX100-1-500		INSULATION, SLEEVING - SZ 7/16		
27	PX100-1-315		INSULATION, SLEEVING - SZ 5/16		
26	DELETED				
1	25	LA107-18-J3008	SLEEVE, MARKER, CABLE		
1	24	LA107-14-CA1075	SLEEVE, MARKER, CABLE		
12	23	PL242-1	CONTACT, ELECT., MALE		
1	22	DELETED			
1	21	DELETED			
1	20	PL212-2	CONNECTOR, PLUG, FEMALE		
1	19	NTH0632BN8	NUT, PLAIN, HEX		
1	18	LWE06MRN	WASHER, LOCK, EXT		
1	17	FW06HBN	WASHER, FLAT		
1	16	SCBP0632BN6	SCREW, MACHINE		
1	15	CUI02-6	CLAMP, LOOP - 7/16		
1	14	TM105-12AR	TERM. Bd. FANNING		
13	MWC22(7)UO		SHIELD TERMINATIONS		
12		SJ7	TB3002	J3008	PIN H
11					E
10					C
9				J3008	PIN A
8				TB4005	
7					
6					
5					
4					
3					
2					
1	MWC22(7)SJ1	TB3002	TB4005		



NOTES

Q'TY./UNIT	MODEL USED ON	ASSY. NO.
1	TSTE-10K	AX563
SCALE	CODE	

THE CONTENTS OF THIS DRAWING ARE THE EXCLUSIVE PROPERTY OF THE TECHNICAL MATERIEL CORP. ITS UNAUTHORIZED USE OR REPRODUCTION IN WHOLE OR IN PART IS STRICTLY FORBIDDEN.

BUDETTI LIST OF MATERIAL

THE TECHNICAL MATERIEL CORP.
MAMARONECK, NEW YORK

TITLE
WIRING HARNESS, BRANCHED

DRAWN BPM **DATE** 12/24/65 **FINAL APPROVAL** [Signature] **DATE**

CHECKED [Signature] **DATE** 5/11/66

ELECT. DES. [Signature] **DATE** 5-11-66 **CA1075**

MECH. DES. [Signature] **DATE**

SHEET 1 **REV. LTR.** Ø

UNLESS OTHERWISE SPECIFIED DIMENSIONS ARE IN INCHES AND INCLUDE CHEMICALLY APPLIED OR PLATED FINISHES

TOLERANCES
DECIMALS: X ± .05, XX ± .01, XXX ± .005
FRACTIONS: ± 1/64, ANGLES: ± 0° 30'

2 MIL 28 5/10/66 1

REPROVAL NO. 4409 21599