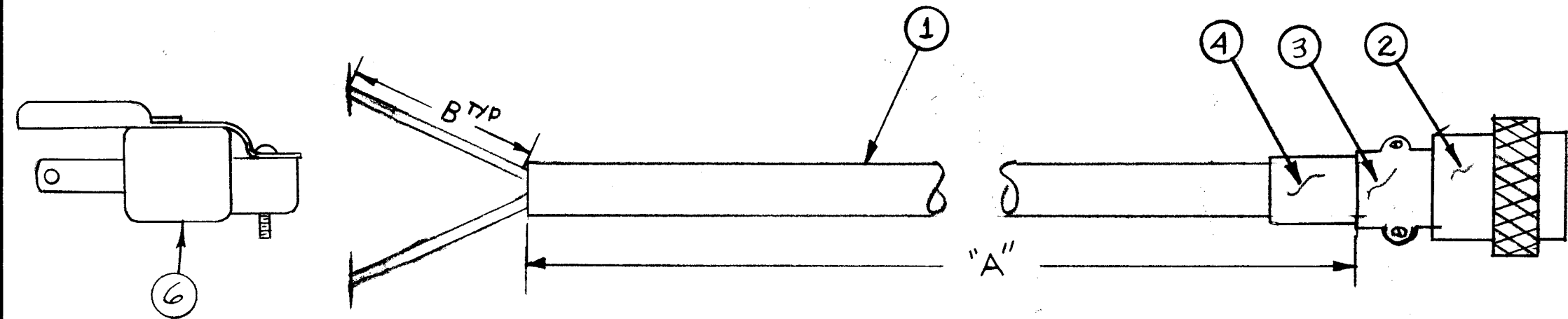


TMC PART NUMBER	DIM. "A"	DIM. "B"	ITEM 1	ITEM 6
CA1067-1	79	1-3/8	WI112-1	NONE
CA1067-2 * (SEE NOTE)	30	1	WI112-2	PL218

SYM	DESCRIPTION	DATE	E.M.N. NO.	DRAFT	CHKD	APPD	REVISIONS	
X	EXPERIMENTAL RELEASE						T.G.M.	
Ø	ORIGINAL RELEASE FOR PRODUCTION	3-11-65						
A	ADD. P/N CA1067-2; ADD. ITEM 6	3-21-66	15983	HCA				
B	ADDED SUPERSEDED NOTE (REF: CA1067-2)	7-7-67	18381	L.A.K.				

CA1067



- NOTE:
1. SOLDER WHITE LEAD TO PIN "A".
 2. SOLDER BLACK LEAD TO PIN "C".
 3. SOLDER COLORED LEAD, OF 3 CONDUCTOR CABLE, TO PIN B.

*NOTE:
CA1067-2 IS SUPERSEDED
& DIRECTLY REPLACED
BY CA 1151-2-030 *

THIS SYMBOL DENOTES END OF INSULATION AND NAIL DRIVING POINT. WIRE MUST BE STRIPPED 3/4" BEYOND THIS POINT AND TINNED 1/2" UNLESS OTHERWISE SPECIFIED.

REQ'D.	ITEM	PART NUMBER	DESCRIPTION	SYMBOL
1	6	SEE CHART	CONNECTOR, PLUG, 3 PRONG, AC	
X	5	BS100	SOLDER, TIN ALLOY	
1	4	MS3420-6A	BUSHING, RUBBER	
1	3	MS3057-6	CLAMP, CABLE, EL CONNECTOR	
1	2	MS3106A14S1S	CONNECTOR, PLUG FEMALE	
X	1	SEE CHART	CABLE, SPECIAL PURPOSE	

LIST OF MATERIAL

MATERIAL	THE TECHNICAL MATERIEL CORP. MAMARONECK, NEW YORK			
FINISH	TITLE CABLE ASSY, POWER			
UNLESS OTHERWISE SPECIFIED DIMENSIONS ARE IN INCHES AND INCLUDE CHEMICALLY APPLIED OR PLATED FINISHES	DRAWN	DATE	FINAL APPROVAL	
	T. MEEHAN JR.	8-8-65	[Signature]	
DECIMALS .X ± .05 .XX ± .01 .XXX ± .005	CHECKED	DATE	CA1067	
	[Signature]	3-9-65	B	
FRACTIONS ± 1/64 ANGLES ± 0° 30'	ELECTRICAL	DATE	SHEET	
	[Signature]		REV. LTR.	
TOLERANCES	MECH. DES.	DATE		

1	RAK-106	ASSY. NO.
QTY./UNIT	MODEL USED ON	
SCALE	CODE	
THE CONTENTS OF THIS DRAWING ARE THE EXCLUSIVE PROPERTY OF THE TECHNICAL MATERIEL CORP. ITS UNAUTHORIZED USE OR REPRODUCTION IN WHOLE OR IN PART IS STRICTLY FORBIDDEN.		

NOTES