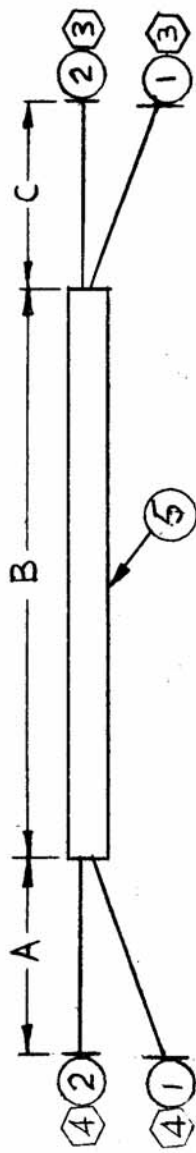


TMC NO.	ITEM 1	ITEM 2	ITEM 3	ITEM 4	ITEM 5	A	B	C	CONNECTION BETWEEN USED ON	REQ. UNIT
CA1061-1	MWC16(19)U7	MWC16(19)U9	TE159-3794	NONE	PX850-10-1	4	16	4	—AA—	200K 2
CA1061-2	MWC16(19)U7	MWC16(19)U9	NONE	NONE	PX850-10-1	4	66	4	—AA—	200K 2
CA1061-3	MWC16(19)U6	MWC16(19)U4	TE159-3794	NONE	PX850-10-1	3	66	3	—AAA—	200K 2
CA1061-4	MWC22(7)U3	MWC22(7)U7	NONE	NONE	PX100-1-148	2	24	3	5020 PINS BY 48 AND 2503, 25032	RTMU-1 1
CA1061-5	MWC20(7)U2	MWC20(7)U2	TE120-2	NONE	PX100-1-148	1 1/2	50	1 1/2	—AAA—	DDRR-5M 2
CA1061-6	MWC22(7)U01	MWC22(7)U9B	FL242-1	NONE	PX100-1-148	3	36	1	—AA—	DDRR-5M 4
CA1061-7	MWC22(7)U2	MWC22(7)U2	TE120-2	TE120-2	PX100-1-148	2	8	2	—AA—	DDRR-5M 1
CA1061-8	MWC22(7)U8	MWC22(7)U8	FL242-1	NONE	PX100-1-148	3	36	1	—AA—	DDRR-5M 4

CA1061 C



OBSOLETE. FOR SPARE PARTS USE ONLY.
FOR FUTURE DESIGN USE CA676.

THIS SYMBOL DENOTES END OF INSULATION AND NAIL DRIVING POINT. WIRE MUST BE STRIPPED 3/4" BEYOND THIS POINT AND TIPPED 1/2" UNLESS OTHERWISE SPECIFIED.

X	6	BS 100	SOLDER TIN ALLOY
	5	SEE CHART	INSULATION SLEEVING ELECT.
	4	SEE CHART	TERMINAL, LUG
	3	SEE CHART	TERMINAL, LUG
	2	SEE CHART	WIRE, ELECTRICAL, INSULATED
	1	SEE CHART	WIRE, ELECTRICAL, INSULATED
		REQ. ITEM	BUDETTI DESCRIPTION
		PART NO.	THE TECHNICAL MATERIEL CORP. MAMARONECK NEW YORK
		STOCK SIZE	CABLE, WIRING,
		MATERIAL	
		TYPE & TEMPER	SRG
		HEAT TREAT. SPEC.	
		FINISH & SPEC. NO.	

C	OBSOLETE REE WWS CA678	14974	MW	JCB	QC
B	CA1061-6 IS ADDED	1496	CL	JCB	RH.
A	ORIGINAL RELEASE FOR PRODUCTION	1492	CL	JCB	OP.
X	COMPLETELY REVISED	4-13-65			
X	EXP. RELEASE	3-3-65	X	SRG	
SYM	DESCRIPTION	DATE	CH. NO.	DRAFTS	CHECKER
	UNLESS OTHERWISE SPECIFIED DIMENSIONS ARE IN INCHES AND INCLUDE CHEMICALLY APPLIED OR PLATED FINISHES	SCALE			ENG. APP.
	TOLERANCES				
	FRACTIONS				
	DECIMALS				
	± .05				
	± .01				
	± .005				
	± .001				
	± .0005				
	± .0002				
	± .0001				
	± .00005				
	± .00002				
	± .00001				
	± .000005				
	± .000002				
	± .000001				
	± .0000005				
	± .0000002				
	± .0000001				
	± .00000005				
	± .00000002				
	± .00000001				
	± .000000005				
	± .000000002				
	± .000000001				
	± .0000000005				
	± .0000000002				
	± .0000000001				
	± .00000000005				
	± .00000000002				
	± .00000000001				
	± .000000000005				
	± .000000000002				
	± .000000000001				
	± .0000000000005				
	± .0000000000002				
	± .0000000000001				
	± .00000000000005				
	± .00000000000002				
	± .00000000000001				
	± .000000000000005				
	± .000000000000002				
	± .000000000000001				
	± .0000000000000005				
	± .0000000000000002				
	± .0000000000000001				
	± .00000000000000005				
	± .00000000000000002				
	± .00000000000000001				
	± .000000000000000005				
	± .000000000000000002				
	± .000000000000000001				
	± .0000000000000000005				
	± .0000000000000000002				
	± .0000000000000000001				
	± .00000000000000000005				
	± .00000000000000000002				
	± .00000000000000000001				
	± .000000000000000000005				
	± .000000000000000000002				
	± .000000000000000000001				
	± .0000000000000000000005				
	± .0000000000000000000002				
	± .0000000000000000000001				
	± .00000000000000000000005				
	± .00000000000000000000002				
	± .00000000000000000000001				
	± .000000000000000000000005				
	± .000000000000000000000002				
	± .000000000000000000000001				
	± .0000000000000000000000005				
	± .0000000000000000000000002				
	± .0000000000000000000000001				
	± .00000000000000000000000005				
	± .00000000000000000000000002				
	± .00000000000000000000000001				
	± .000000000000000000000000005				
	± .000000000000000000000000002				
	± .000000000000000000000000001				
	± .0000000000000000000000000005				
	± .0000000000000000000000000002				
	± .0000000000000000000000000001				
	± .00000000000000000000000000005				
	± .00000000000000000000000000002				
	± .00000000000000000000000000001				
	± .000000000000000000000000000005				
	± .000000000000000000000000000002				
	± .000000000000000000000000000001				
	± .0000000000000000000000000000005				
	± .0000000000000000000000000000002				
	± .0000000000000000000000000000001				
	± .00000000000000000000000000000005				
	± .00000000000000000000000000000002				
	± .00000000000000000000000000000001				
	± .000000000000000000000000000000005				
	± .000000000000000000000000000000002				
	± .000000000000000000000000000000001				
	± .0000000000000000000000000000000005				
	± .0000000000000000000000000000000002				
	± .0000000000000000000000000000000001				
	± .00000000000000000000000000000000005				
	± .00000000000000000000000000000000002				
	± .00000000000000000000000000000000001				
	± .000000000000000000000000000000000005				
	± .000000000000000000000000000000000002				
	± .000000000000000000000000000000000001				
	± .0000000000000000000000000000000000005				
	± .0000000000000000000000000000000000002				
	± .0000000000000000000000000000000000001				
	± .00000000000000000000000000000000000005				
	± .00000000000000000000000000000000000002				
	± .00000000000000000000000000000000000001				
	± .000000000000000000000000000000000000005				
	± .000000000000000000000000000000000000002				
	± .000000000000000000000000000000000000001				
	± .0000000000000000000000000000000000000005				
	± .0000000000000000000000000000000000000002				
	± .0000000000000000000000000000000000000001				
	± .005				
	± .002				
	± .001				
	± .0005				
	± .0002				
	± .0001				
	± .005				
	± .002				
	± .001				
	± .0005				
	± .0002				
	± .0001				
	± .005				
	± .002				
	± .001				
	± .0005				
	± .0002				
	± .0001				
	± .005				
	± .002				
	± .001				
	± .0005				
	± .0002				
	± .0001				
	± .005				
	± .002				
	± .001				
	± .0005				
	± .0002				
	± .0001				
	± .005				
	± .000				