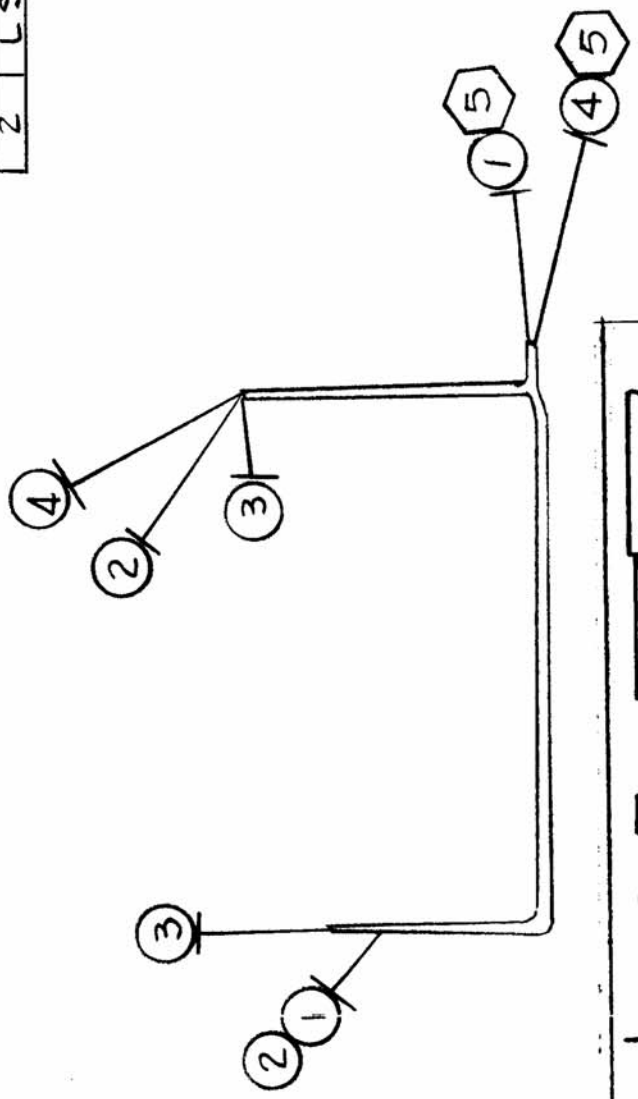


CA1048 Ø

USED ON
 REQ. PER UNIT: 2
 MODEL: LSP-15
 ASS'Y. NO.:
 DATE: 2-24-65

— SYMBOL NOTES —

○ DENOTES ITEM NO
 ⬡ DENOTES TERM. LUG



THIS SYMBOL DENOTES END OF INSULATION AND NAIL DRIVING POINT. WIRE MUST BE STRIPPED 3/4" BEYOND THIS POINT AND TINNED 1/2" UNLESS OTHERWISE SPECIFIED.

WIRES SHOULD BE PLACED IN CABLE IN NUMERICAL SEQUENCE AS THEY APPEAR IN ITEM COLUMN. SPACE LACING APPROXIMATELY 3/4" APART.

REQ. ITEM	PART NO.	DESCRIPTION	SYMBOL
X 6	CD101-1-MW	CORD, NYLON LACING	
2 5	TE 120-2	TERMINAL, LUG SPADE	
5 4	MWC 22(7)U9	WIRE, ELEC. INSULATED	
8 3	MWC 22(7)U0	↑	
8 2	MWC 22(7)U9S	↓	
6 1	MWC 22(7)U5	WIRE, ELEC. INSULATED	
		4AY	
		THE TECHNICAL MATERIEL CORP. MAMARONECK, NEW YORK	
		WIRING, HARNESS, BRANCHED	
		G.D.L	
		QC	
		RC	
		CA1048	
		Ø	

SYM	DESCRIPTION	DATE	CH. NO.	DRAFTS	CHECKER	ENG. APP.
Ø	ORIGINAL RELEASE FOR PRODUCTION	2/24/65		CDL		
X	EXPER. RELEASE	2-24-65		GDL		
	UNLESS OTHERWISE SPECIFIED DIMENSIONS ARE IN INCHES AND INCLUDE CHEMICALLY APPLIED OR PLATED FINISHES					
	TOLERANCES					
	FRACTIONS					
	DECIMALS					
	ANGLES					
	CODE					
	A					
	SCALE					
	1:1					
	FINISH & SPEC. NO.					
	TYPE & TEMPER					
	HEAT TREAT. SPEC.					
	MATERIAL					
	STOCK SIZE					
	DRAWN					
	CHECKED					
	FINAL APPROVAL					
	ELEC. DESI. APP.					
	MECH. DES. APP.					
	MECH. DES. APP.					
	FINISH & SPEC. NO.					
	CA1048					
	Ø					