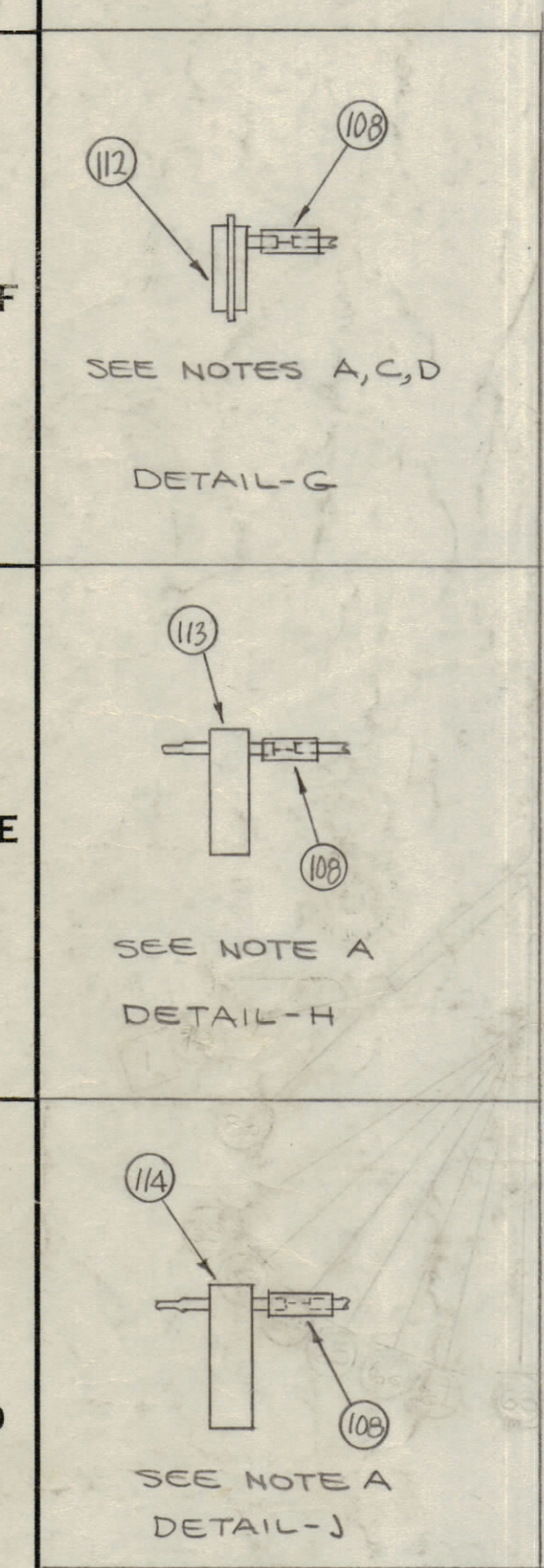
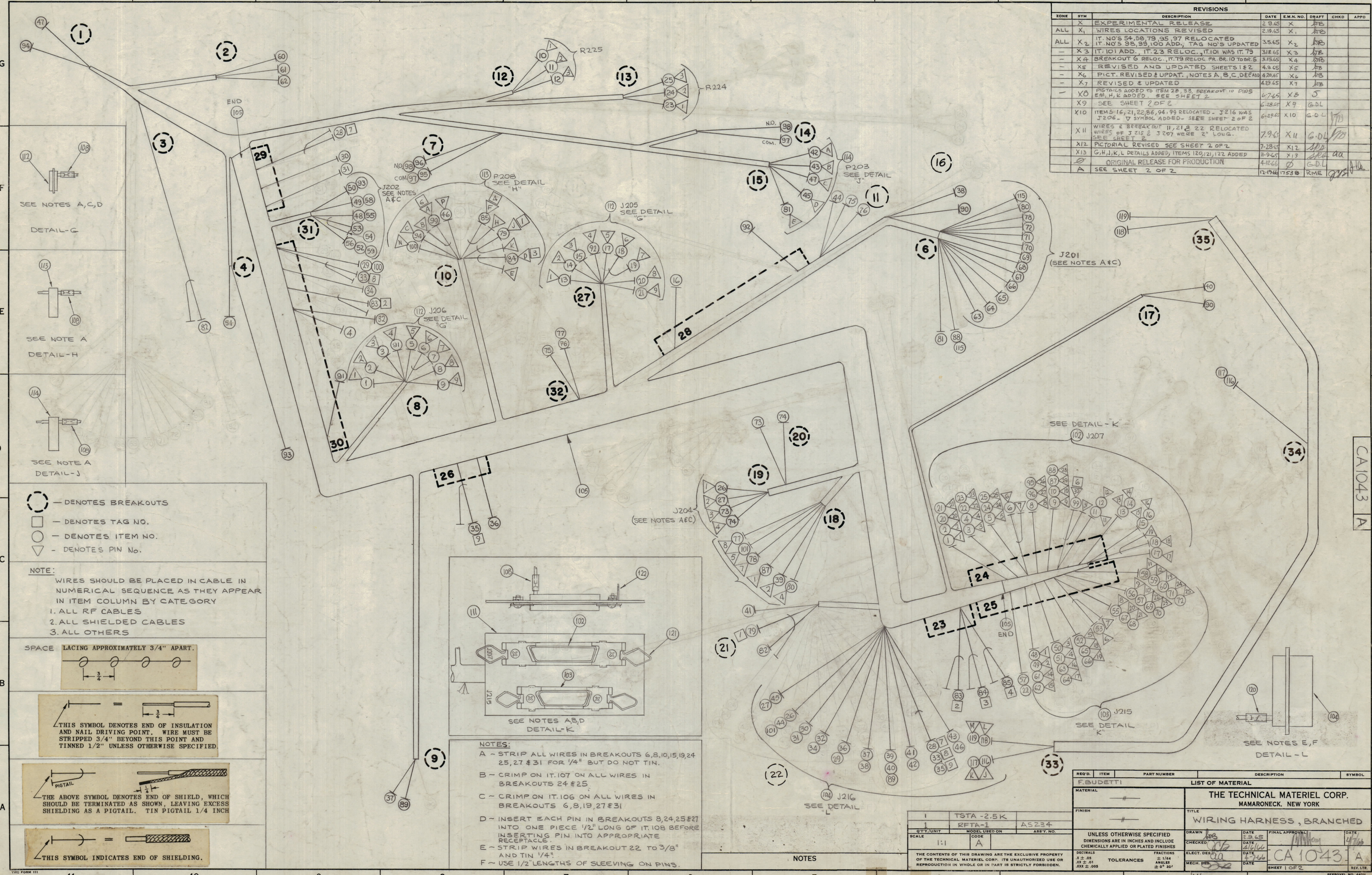
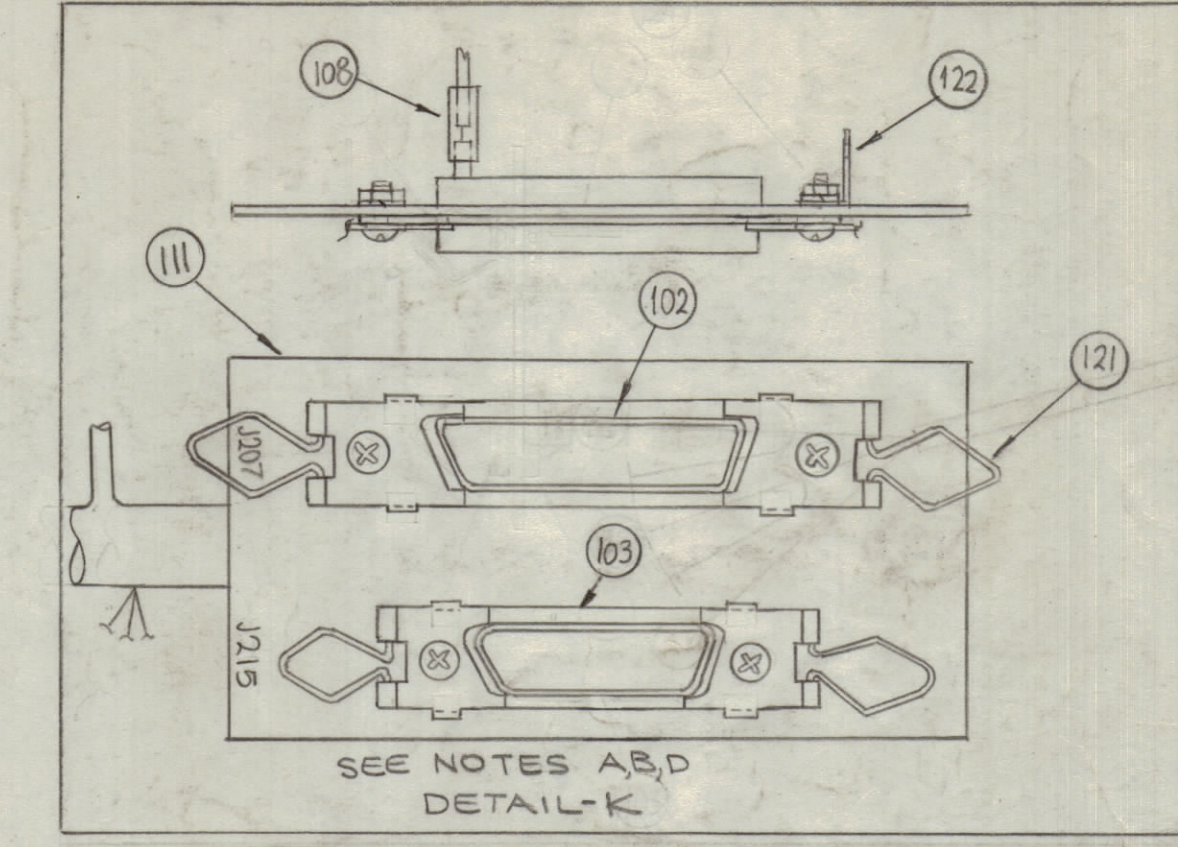
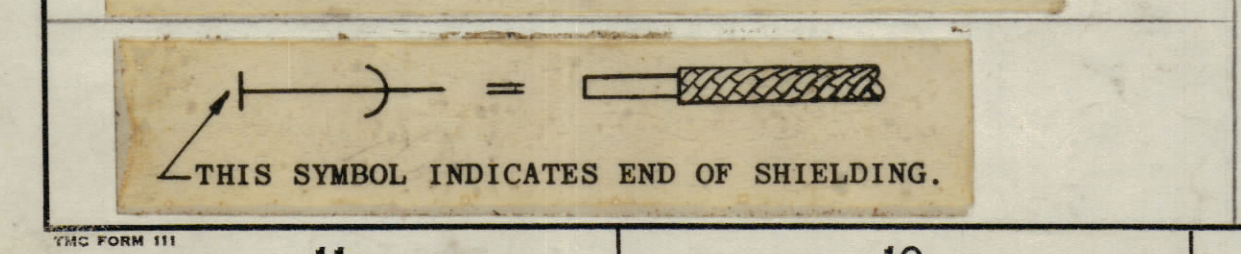
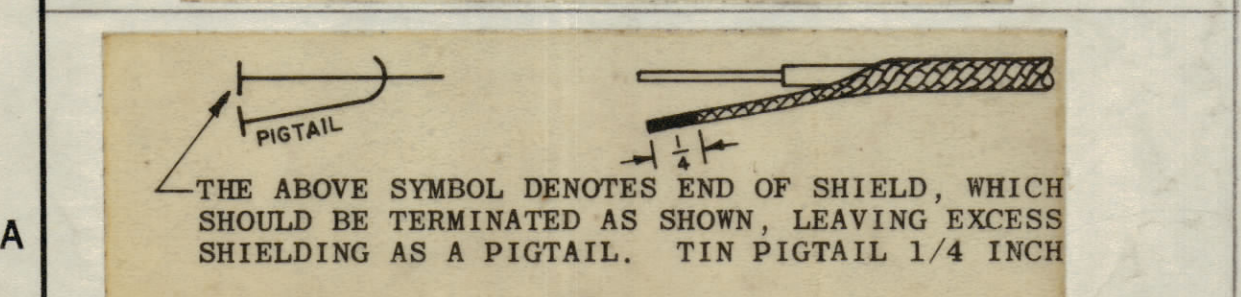
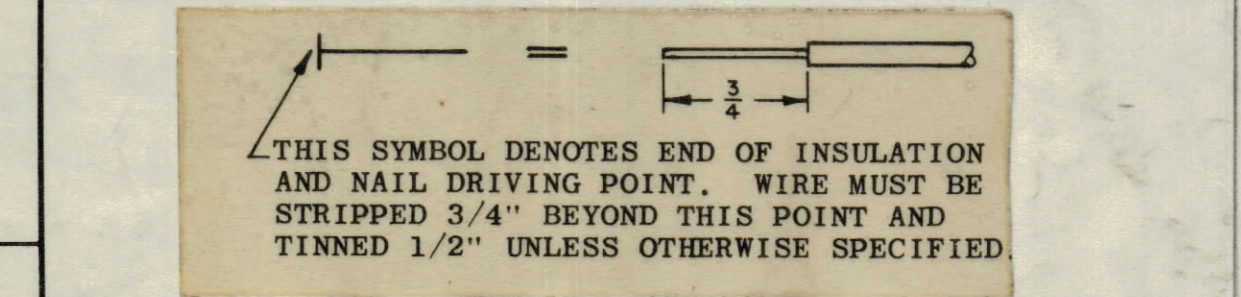
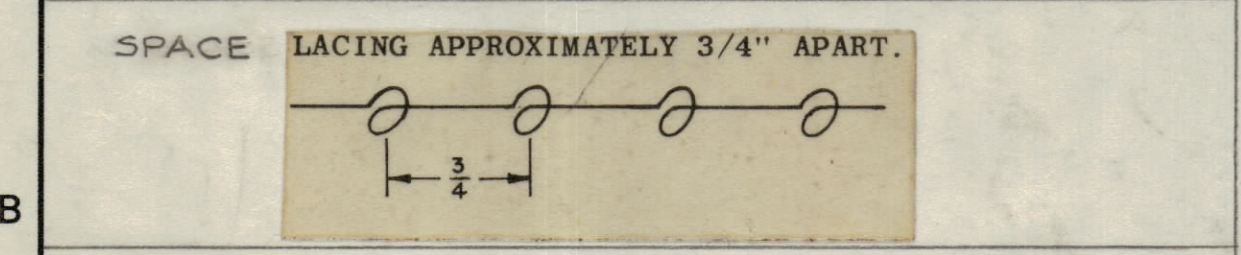


REVISIONS						
ZONE	SYM	DESCRIPTION	DATE	EM.N. NO.	DRAFT	CHKD
X		EXPERIMENTAL RELEASE	2-9-65	X	ARB	
ALL	X1	WIRES LOCATIONS REVISED	2-19-65	X1	ARB	
ALL	X2	IT. NO'S 54, 58, 79, 95, 97 RELOCATED IT. NO'S 98, 99, 100 ADD., TAG NO'S UPDATED	3-5-65	X2	ARB	
-	X3	IT. 101 ADD., IT. 23 RELOC., IT. 101 WAS IT. 79	3-18-65	X3	ARB	
-	X4	BREAKOUT 6 RELOC., IT. 79 RELOC. FR. BR. 10 TO BR. 5	3-18-65	X4	ARB	
-	X5	REVISED AND UPDATED SHEETS 1 & 2	4-9-65	X5	ARB	
-	X6	PICT. REVISED & UPDAT., NOTES A, B, C, DEF	4-29-65	X6	ARB	
-	X7	REVISED & UPDATED	4-29-65	X7	ARB	
-	X8	PICTAILS ADDED TO ITEM 28, 33, BREAKOUT 10 PINS EM, H, K ADDED. SEE SHEET 2	6-7-65	X8	J	
-	X9	SEE SHEET 2 OF 2	6-28-65	X9	GDL	
-	X10	ITEMS 16, 21, 22, 86, 94, 99 RELOCATED. J216 WAS J206 - V SYMBOL ADDED. SEE SHEET 2 OF 2	6-29-65	X10	GDL	
-	X11	WIRES & BREAKOUT 11, 21 & 22 RELOCATED WIRES OF J215 & J207 WERE 2" LONG. SEE SHEET 2	7-9-65	X11	GDL	
-	X12	PICTORIAL REVISED SEE SHEET 2 OF 2	7-28-65	X12	ARB	
-	X13	G, H, J, K, L DETAILS ADDED, ITEMS 120, 121, 122 ADDED	11-9-65	X13	ARB	
-	A	ORIGINAL RELEASE FOR PRODUCTION	4-12-66		GDL	
-	A	SEE SHEET 2 OF 2	12-19-66	17538	RME	



○ - DENOTES BREAKOUTS  
 □ - DENOTES TAG NO.  
 ○ - DENOTES ITEM NO.  
 ▽ - DENOTES PIN NO.

**NOTE:**  
 WIRES SHOULD BE PLACED IN CABLE IN NUMERICAL SEQUENCE AS THEY APPEAR IN ITEM COLUMN BY CATEGORY  
 1. ALL RF CABLES  
 2. ALL SHIELDED CABLES  
 3. ALL OTHERS



**NOTES:**  
 A - STRIP ALL WIRES IN BREAKOUTS 6, 8, 10, 15, 19, 24, 25, 27 & 31 FOR 1/4" BUT DO NOT TIN.  
 B - CRIMP ON IT. 107 ON ALL WIRES IN BREAKOUTS 24 & 25.  
 C - CRIMP ON IT. 106 ON ALL WIRES IN BREAKOUTS 6, 8, 19, 27 & 31.  
 D - INSERT EACH PIN IN BREAKOUTS 8, 24, 25 & 27 INTO ONE PIECE 1/2" LONG OF IT. 108 BEFORE INSERTING PIN INTO APPROPRIATE RECEPTACLE.  
 E - STRIP WIRES IN BREAKOUT 22 TO 3/8" AND TIN 1/4".  
 F - USE 1/2" LENGTHS OF SLEEVING ON PINS.

**NOTES:**  
 J204 (SEE NOTES A & C)  
 J205 (SEE DETAIL G)  
 J206 (SEE DETAIL H)  
 J207 (SEE DETAIL K)  
 J215 (SEE DETAIL K)  
 J216 (SEE DETAIL L)

QTY./UNIT	CODE	MODEL USED ON	ASSY. NO.
1		TSTA -2.5K	A5234
		RFTA-1	

REQ'D.	ITEM	PART NUMBER	DESCRIPTION	SYMBOL
			F. BUDETTI	
<b>LIST OF MATERIAL</b>				
MATERIAL		THE TECHNICAL MATERIEL CORP.		
FINISH		MAMARONECK, NEW YORK		
<b>WIRING HARNESS, BRANCHED</b>				
UNLESS OTHERWISE SPECIFIED	DRAWN	DATE	FINAL APPROVAL	DATE
DIMENSIONS ARE IN INCHES AND INCLUDE CHEMICALLY APPLIED OR PLATED FINISHES	ARB	2-9-65		4/7/66
	CHECKED	DATE		
	ARB	2/16/66		
	ELECT. DES.	DATE		
	ARB	4-7-66		
	MECH. DES.	DATE		
	ARB	5-2-66		
THE CONTENTS OF THIS DRAWING ARE THE EXCLUSIVE PROPERTY OF THE TECHNICAL MATERIEL CORP. ITS UNAUTHORIZED USE OR REPRODUCTION IN WHOLE OR IN PART IS STRICTLY FORBIDDEN.			DECIMALS .1 ± .05 .XX ± .01 .XXX ± .005	
			FRACTIONS ± 1/64 ANGLE ± 6° 30'	
SCALE 1:1		SHEET 1 OF 2		

CA1043 A

CA1043 A



FR.	TO	ITEM	P/N	FROM	TO	SYMBOL
9	22	89	WI140E28E7	S203	N.O.	J216 PIN S VIOLET
24	6	88	MWC24(7)U1	J207	Pin 28	R223 SIDE 2 BROWN
24	18	87	MWC24(7)U91	J207	Pin 29	K201 PIN I WH/BROWN
		86	DELETED			
23	10	85	WI150-2	J213	Pin 5	P208 PIN F [4]
23	10	84	WI150-2	J212		P208 PIN D [3]
23	30	83	WI150-2	J209		C303 [2]
21	3	82	RG174	J208		R201
15	6	81	MWC24(7)U8	J203	Pin E	R223 Side 1 Black
18	6	80	MWC24(7)U7	K201	PIN 4	J201 PIN I3 VIOLET
10	21	79	WI150-2	C306		P208 PIN J [1]
6	18	78	WI140E28E6	J201	PIN II	K201 PIN 7 BLUE
32	18	77	MWC24(7)U98	C292	Side 2	K201 PIN 8 WH/GREY
32	11	76	MWC24(7)U98		Side 2	B202 Pin 3 Wh/Grey
32	11	75	MWC24(7)U98	C292	Side I	B202 Pin 1 Wh/Black
19	20	74		J204	Pin 4	C296 Side 2 Wh/Black
19	20	73	MWC24(7)U98	J204	Pin 3	C296 Side 1 Wh/Grey
25	6	72	WI140E28E7	J215	Pin 25	J201 PIN 10 Violet
		71			24	9 Wh/Grey
		70			23	8 Wh/Viol.
		69			22	7 Wh/Blue
		68			21	6 Wh/Green
		67			20	5 Wh/Yellow
		66			19	4 Wh/Org.
		65			18	3 Wh/Red
		64			17	2 Wh/Brown
		63			16	J201 PIN 1 Wh/Black
		62	E6		15	R222 PIN 3 BLU
		61	I		14	PIN 2 Brown
		60	2		13	R222 Pin 1 Red
		59	91		12	J202 Pin 11 Wh/BROWN
		58	WI140E28E95		11	J202 Pin 10 Wh/Green
		57	MWC24(7)U8		10	Gnd. Black
		56	WI140E28E3		9	J202 PIN 9 ORANGE
		55	WI140E28E8		8	Gray
		54	Shield of Item 53		7	Shield
		53	WI150-2		6	
		52	WI140E28E9		5	J202 PIN 5 White
		51	4		4	C291 YELLOW
		50	8		3	J202 PIN 3 Black
		49	5		2	Green
25	31	48	2	J215	Pin I	J202 Pin 1 Red
1	15	47	2	J203	Pin C	S201 Wiper Red
22	10	46	92	J216	Pin X	P208 PIN P Wh/Red
		45	WI140 E28E8		B	J203 Pin D Grey
		44	MWC24(7)U8		A	B202 Pin 1 Black
		43	92		X	J203 Pin B Wh/Red
		42	98		W	J203 Pin A Wh/Black
		41	MWC24(7)U91		V	GND WH/BROWN
		40	WI140E28E97		U	S204 Contact Wh/Violet
		39	MWC24(7)U95		T	K201 PIN 2 WH/GRN
		38	WI140E28E7		S	S205 Arm. Violet
		37	WI140E28E96		R	S203 ARM. WH/BLUE
		36	MWC24(7)U4		P	C271 Yellow
22	26	35	WI150-2	J216	Pin N	C260 [9]

ZONE	SYM	DESCRIPTION	DATE	E.M.N. NO.	DRAFT	CHKD	APPD
-	X2	SEE SHEET 1 OF 2	3-9-65	X2	ATB		
-	X3	IT. 101 ADD. IT. 79 WAS FR. BREAKOUT B	3-18-65	X3	ATB		
-	X4	IT. 102 THRU IT. 112 ADD. B/M UPDATED	4-8-65	X4	ATB		
-	X5	B/M REVISED & UPDATED	4-19-65	X5	ATB		
-	X6	SEE SHEET 1 OF 2 REV. X6	4-20-65	X6	ATB		
-	X7	IT. 113, 114 & 115 ADD. B/M UPDATED	4-28-65	X7	ATB		
-	X8	ITEMS 32 & 36 WERE MWC24(7). IT. 79 WAS WI140. ITEMS 44, 74, 91, 100 RELOCATED. SEE SHEET #1	6-7-65		J		
-	X9	ITEM 32 & 36 WERE MWC24(7)	6-28-65	X9	G-DL		
X10		ITEM 99 WAS WITHDRAWN. ON THEREAFTER 84, 79, 93, 93, 93, 28, 118 & ADD. - 2 TO WI 150. ON BROWN 3508 WAS J205 & J205 WAS J206 - SEE SHEET 1 OF 2	6-28-65	X10	G-DL		
X11		COLOR OF WIRES 9, 23, 39, 60, 62, 78, 80, 101 MODIFIED. ITEM 4, 9, 21, 56 RELOCATED. SEE SHEET #1	7-9-65	X11	G-DL		
X12		ITEM 1-25 WAS 3215. IT. 22 RELOCATED. IT. 42, 43, 45 AT REVISED IT. 48-72 WAS 3207. IT. 41, 77 COLOR MOD. IT. 77, 80, 91 PINS REVISED IT. 87, 88 WAS 3215. IT. 91, 92, 95, 96, 99 PINS REVISED COLOR. IT. 114-119 ADDED ITEM 56 WAS WI 150-2	7-28	X12			
X13		ITEMS 120, 121, 122 ADDED	11-9-65	X13			
Ø		ORIGINAL RELEASE FOR PRODUCTION	4-12-66	Ø	G-DL		
A		IT. 102 WAS JJ313-2 & IT 103 WAS JJ313-3	12-19-66	17538	RME		

FR. TO OR REQ.

FR.	TO	ITEM	P/N	FROM	TO	SYMBOL
		1	122	TE 149-120		LUG, SOLDER
		3	121	FS 125-1		SPRING LATCH LOCK ASSY
		X	120	PX 830-12-1		INS, SLVG, SHRINK
33	35	119	MWC 12 (18) B90	J216	PIN M	L251
33	35	118	B90		L	L251
33	34	117	B9		K	L250
33	34	116	MWC 12 (18) B9	J216	PIN J	L250
6	6	115	WI140E28E1	R223	SIDE 2	J201 PIN I2 BROWN
		114	PL 225-1S			CONNECTOR, PLUG, FEMALE P203
		113	PL 225-5S			CONNECTOR, PLUG, FEMALE P208
		112	JJ 310-4			CONNECTOR, RECPT., FEMALE J205
		111	MS 4377			PLATE, MTG., JACK
		X	110	CD101-3MW		CORD, NYLON, LACING
		X	109	BS 100		SOLDER, SOFT
		X	108	PX 830-16-1		INSULATION, SLEEVING, ELEC, SHRINK
		107	PN 119-1			PIN, CONTACT, ELECTRICAL
		106	PN 119-2			PIN, CONTACT, ELECTRICAL
		X	105	PX 100-1-1000		INSULATION, SLEEVING, ELEC.
		104	MS 3102A2B-11P			CONNECTOR, RECPT., MALE J206
		103	JJ 313-2			CONNECTOR, RECPT., MALE J215
		102	JJ 313-3			CONNECTOR, RECPT., MALE J207
22	18	101	MWC24(7)U8	J216	PIN B	K201 PIN 6 GREY
30	10	100	MWC24(7)U91	C297		P208 Pin N Wh/Brown
24	10	99	WI150-2	J207	Pin 30	P208 PIN A [6]
7	14	98	93	S206	CONTACT	S211 N.O. Wh/Org.
7	14	97	3	S206	ARM.	S211 ARM. Org.
24	7	96	92	J207	Pin 27	S206 N.O. Wh/Red
24	7	95	2	J207	Pin 26	S206 ARM. Red
10	1	94	5	P208	PIN C	S201 Pin 4 Green
31	4	93	94	J202	Pin 4	C291 Wh/Yel.
27	28	92	4	J205	Pin 4	C302 Yellow
8	30	91	94	J206	Pin 4	C301 WH/Yel.
16	17	90	WI140E28E6	S205	N.O.	S204 ARM. BLUE
FR.	TO	ITEM	P/N	FROM	TO	SYMBOL

FR.	TO	ITEM	PART NUMBER	FROM	TO	SYMBOL
22	30	34	MWC24(7)U94	J216	Pin I	C229 Wh/Yel.
	30	33	WI150-2		H	C225 [B]
	30	32	MWC22(7)U2		G	C221 Red
	29	31	MWC24(7)U2		F	C216 Red
	29	30	MWC24(7)U4		E	C210 Yellow
	30	29	MWC20(7)U1		D	C297 Brown
	29	28	WI150-2		C	C204 [7]
	19	27	MWC20(7)U8		B	J204 Pin 2 Grey
22	19	26	MWC20(7)U8	J216	Pin A	J204 Pin 1 Black
24	13	25	WI140E28E97	J207	Pin 25	R224 Pin 3 Wh/VIO
		24	91		24	2 Wh/Brown
	13	23	WI140E28E1		23	R224 Pin 1 BRN
	25	22	MWC22(7)U8		22	GND Black
	27	21	WI140E28E93		21	J205 PIN 9 Wh/ORANGE
	27	20	WI140E28E98		20	8 Wh/Grey
	19		Shield of Item 18		19	7
	18		WI150-2		18	6
	27	17	WI140E28E97		17	J205 PIN 5 Wh/Violet
	28	16	94		16	C301 Wh/YELLOW
	27	15	95		15	J205 PIN 3 Black
		14	98		14	2 Wh/Green
	27	13	92		13	J205 Pin 1 Wh/Red
	12	12	1		12	R225 Pin 3 Brown
	12	11	6		11	2 Blue
	12	10	7		10	R225 Pin 1 Violet
	8	9	3		9	J206 PIN 9 ORN
	8	8	WI140E28E8		8	8 Grey
	7		Shield of Item 6		7	7 Shield
	6		WI150-2		6	6
	8	5	WI140E28E9		5	J206 PIN 5 White
	30	4	4		4	C302 YELLOW
	8	3	98		3	J206 PIN 3 Wh/Black
		2	5		2	2 Green
24	8	1	WI140E28E2	J207	Pin I	J206 Pin 1 Red

F. BUDETTI LIST OF MATERIAL

MATERIAL: \_\_\_\_\_

FINISH: \_\_\_\_\_

TITLE: THE TECHNICAL MATERIEL CORP. MAMARONECK, NEW YORK

WIRING HARNESS, BRANCHED

UNLESS OTHERWISE SPECIFIED DIMENSIONS ARE IN INCHES AND INCLUDE CHEMICALLY APPLIED OR PLATED FINISHES

SCALE: 1 RFTA-1 A5234

QTY./UNIT: \_\_\_\_\_

MODEL USED ON: \_\_\_\_\_

ASSY. NO.: \_\_\_\_\_

THE CONTENTS OF THIS DRAWING ARE THE EXCLUSIVE PROPERTY OF THE TECHNICAL MATERIEL CORP. ITS UNAUTHORIZED USE OR REPRODUCTION IN WHOLE OR IN PART IS STRICTLY FORBIDDEN.

DECIMALS: X.2 ± .01, X.1 ± .01, XXX ± .005

FRACTIONS: 1/16, 1/8, 3/16, 1/4, 3/8, 1/2, 5/8, 3/4, 7/8

TOLERANCES: ± 1/64 ANGLES: ± 0° 30'

DRAWN: [Signature] DATE: 3-5-65

CHECKED: [Signature] DATE: 2-16-66

ELECT. DES: [Signature] DATE: 4-7-66

MECH. DES: [Signature] DATE: \_\_\_\_\_

FINAL APPROVAL: [Signature] DATE: \_\_\_\_\_

CA1043 A

SHEET 2 OF 2

REV. LTR. \_\_\_\_\_