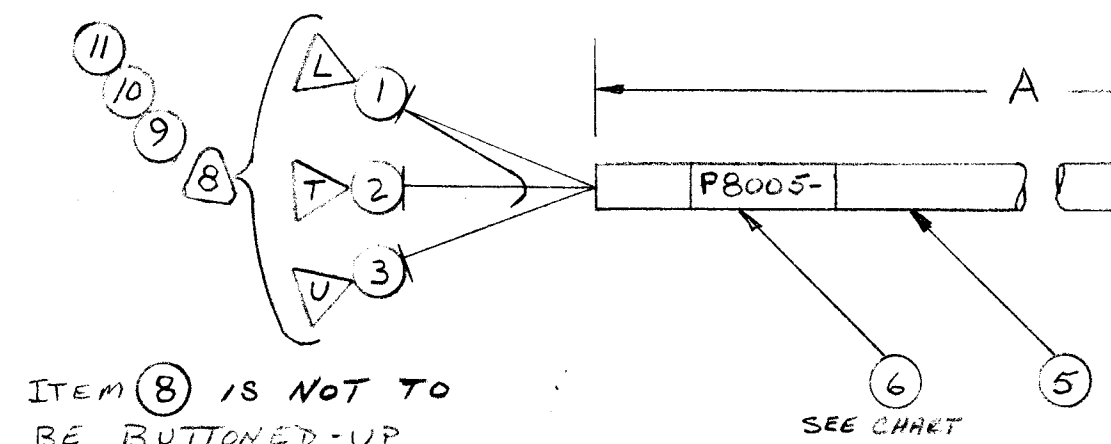
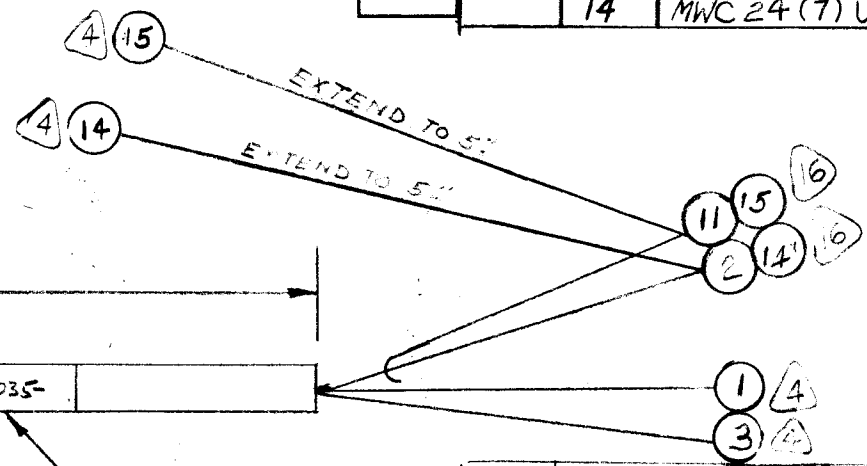


TMC P/N	DIM. A	ITEM ⑥	ITEM ⑦
CA 1035 -1	83	LA107-20-P8005-1	LA107-12-CA1035-1
↑ ↑ -2	118	↑ ↑ ↑ -2	↑ ↑ ↑ -2
↑ ↑ -3	83	↑ ↑ ↑ -3	↑ ↑ ↑ -3
↑ ↑ -4	118	↑ ↑ ↑ -4	↑ ↑ ↑ -4
↑ ↑ -5	83	↑ ↑ ↑ -5	↑ ↑ ↑ -5
↑ ↑ -6	118	↑ ↑ ↑ -6	↑ ↑ ↑ -6
↑ ↑ -7	83	↑ ↑ ↑ -7	↑ ↑ ↑ -7
CA 1035 -8	118	LA107-20-P8005-8	LA107-12-CA1035-8

REVISIONS					
SYM	DESCRIPTION	DATE	E.M.N. NO.	DRAFT	CHKD APPD
X	EXPERIMENTAL RELEASE	3-2-65		HGA	
Ø	ORIGINAL RELEASE FOR PRODUCTION	4-14-65		MHS	
A	IT. 8 WAS PL212-4	5-7-65	14050	RF	<i>[Signature]</i>
B	IT. 14, 15, 16, & CALLOUTS ADDED. DELETE NOTE 4, A2960 WAS A2060. DENOTE CONN. ADDED	8/4/65	14576	X.V.I.	<i>[Signature]</i>
2	16 PL242-3				
	15 MWC 24(7) U0				
	14 MWC 24(7) U5				

CA1035

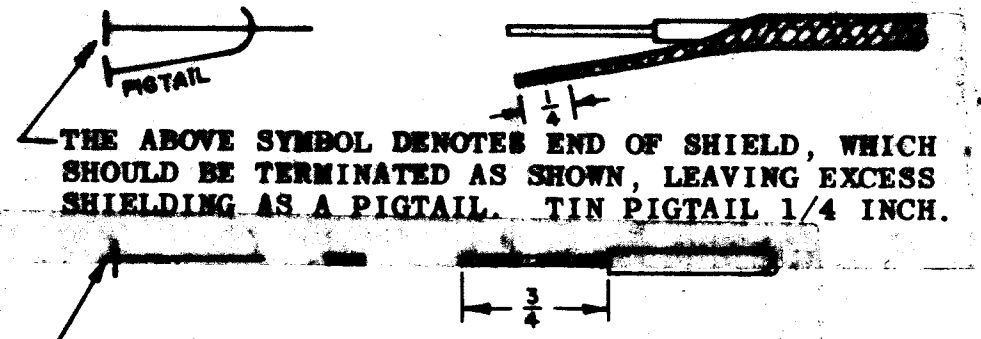


ITEM ⑧ IS NOT TO BE BUTTONED-UP UNTILL CABLE IS INSTALLED IN SYSTEM.

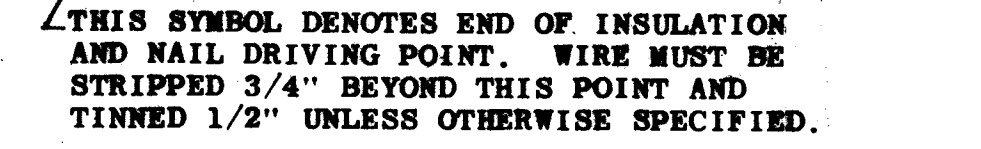
SEE CHART

SEE CHART

- △ DENOTES CONN.
- DENOTES ITEM No.
- ▲ DENOTES PIN No.
- ◇ DENOTES LUG



THE ABOVE SYMBOL DENOTES END OF SHIELD, WHICH SHOULD BE TERMINATED AS SHOWN, LEAVING EXCESS SHIELDING AS A PIGTAIL. TIN PIGTAIL 1/4 INCH.



THIS SYMBOL DENOTES END OF INSULATION AND NAIL DRIVING POINT. WIRE MUST BE STRIPPED 3/4" BEYOND THIS POINT AND TINNED 1/2" UNLESS OTHERWISE SPECIFIED.

REQ'D.	ITEM	PART NUMBER	DESCRIPTION	SYMBOL
X	13	BS100	SOLDER, TIN ALLOY	
X	12	CD101-1MW	CORD, NYLON, LACING	
1	11	MWC 24(7) U0	WIRE, ELEC, INSULATED	
1	10	MS3420-8A	BUSHING, RUBBER	
1	9	MS3420-12A	BUSHING, RUBBER	
1	8	PL212-3	CONN, PLUG, MALE-24/C	
1	7	SEE CHART	SLEEVE, MARKER, CABLE	
1	6	SEE CHART	SLEEVE, MARKER, CABLE	
SEE CHART	5	PX100-1-186	INSULATED SLEEVE	
4	4	PL242-1	CONN, PL, MALE	
	3	MWC 24(7) U90	WIRE, ELEC, INSULATED	
	2	MWC 24(7) S15	CABLE, SP, SHLD/JKT	
	1	MWC 24(7) U0	WIRE, ELEC, INSULATED	

M. STURMER LIST OF MATERIAL			
MATERIAL		THE TECHNICAL MATERIEL CORP. MAMARONECK, NEW YORK	
FINISH		TITLE CBL ASSY. S.P., 3/C HFP TO INTER CONNECT	
UNLESS OTHERWISE SPECIFIED DIMENSIONS ARE IN INCHES AND INCLUDE CHEMICALLY APPLIED OR PLATED FINISHES		DRAWN M. STURMER	DATE 2-4-65
DECIMALS .X ± .05 .XX ± .01 .XXX ± .005		CHECKED <i>[Signature]</i>	DATE 4-14-65
TOLERANCES		ELECT. DES. <i>[Signature]</i>	DATE 4-14-65
FRACTIONS ± 1/64 ANGLES ± 0° 30'		MECH. DES.	DATE
THE CONTENTS OF THIS DRAWING ARE THE EXCLUSIVE PROPERTY OF THE TECHNICAL MATERIEL CORP. ITS UNAUTHORIZED USE OR REPRODUCTION IN WHOLE OR IN PART IS STRICTLY FORBIDDEN.		FINAL APPROVAL <i>[Signature]</i>	
NOTES		SHEET CA1035	
		REV. LTR. B	