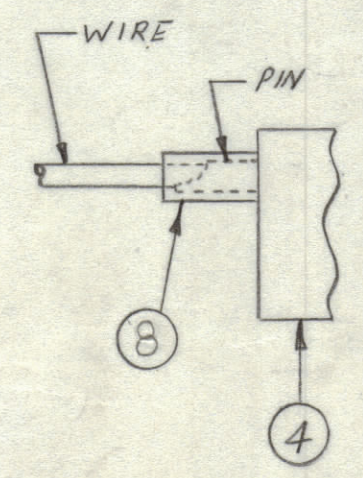
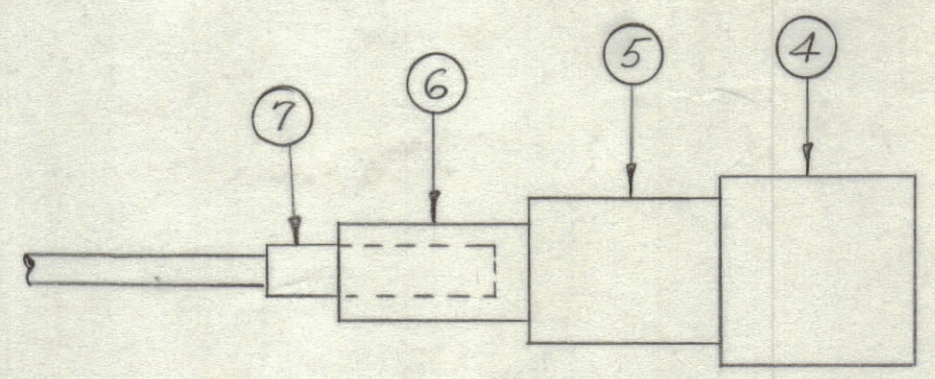
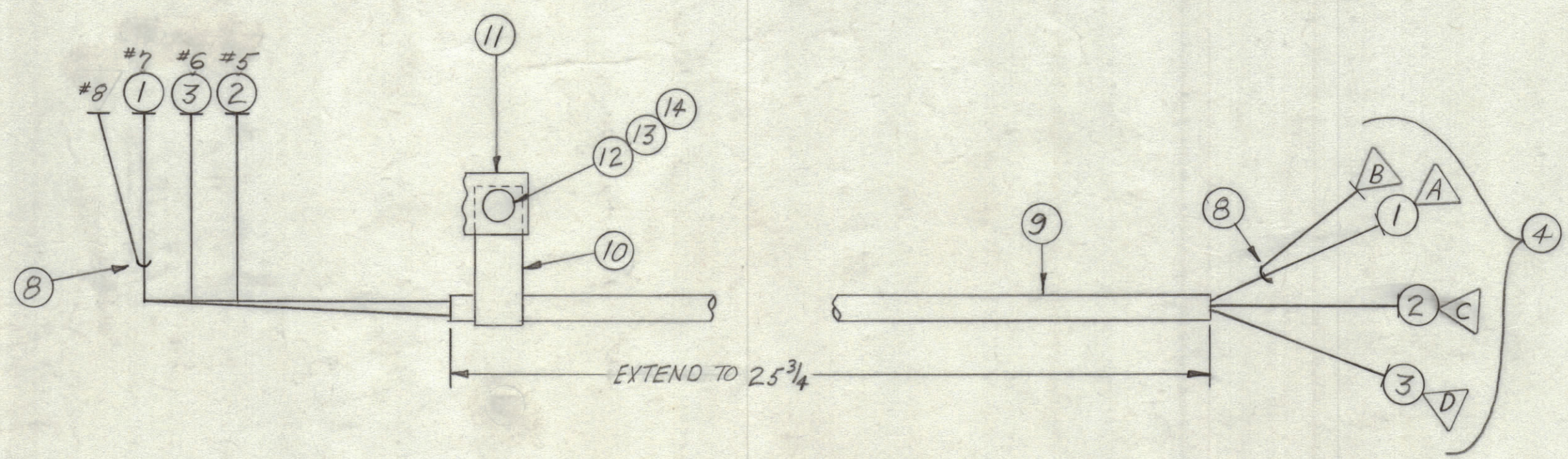
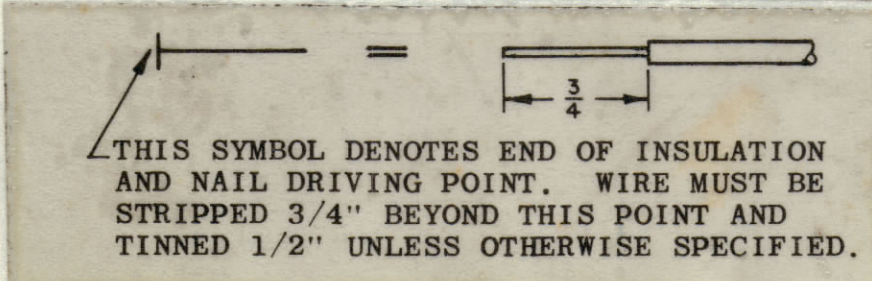
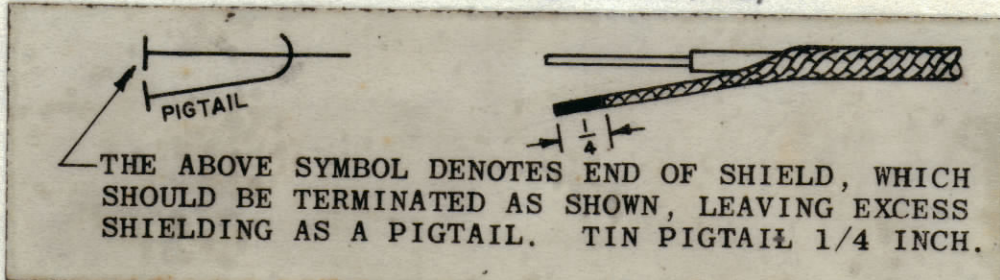


REVISIONS							
ZONE	SYM	DESCRIPTION	DATE	E.M.N. NO.	DRAFT	CHKD	APPD
	Ø	ORIGINAL RELEASE FOR PRODUCTION	2.8.65	Ø	Ø	Ø	Ø



LACE ENDS OF SLEEVING



NOTES

1	KIT 224	
Q'TY./UNIT	MODEL USED ON	ASS'Y. NO.
SCALE	CODE	

THE CONTENTS OF THIS DRAWING ARE THE EXCLUSIVE PROPERTY OF THE TECHNICAL MATERIEL CORP. ITS UNAUTHORIZED USE OR REPRODUCTION IN WHOLE OR IN PART IS STRICTLY FORBIDDEN.

REQ'D.	ITEM	PART NUMBER	DESCRIPTION	TO	SYMBOL
X	17	CD101-1MW	CORD LACING		
X	16	TA100-1	TAPE, ELECTRICAL		
X	15	BS100	SOLDER, TIN ALY.		
1	14	NTH0632 BNG	NUT, HEX HEAD		
1	13	LWF06 MRN	LOCKWASHER, EXTERNAL		
1	12	SCBP0632 BNG	SCREW, MACHINE		
1	11	TH105-BAL	FANNING STRIP		
1	10	CU102-2	CLAMP, 6 TYPE		
25 3/4	9	PX100-1-208	INSULATION, SLEEVING		
1"	8	PX030-12-1	INSULATION, SLEEVING, SHRINK		
1	7	MS3420-6A	BUSHING, CABLE		
1	6	MS3420-8A	BUSHING, CABLE		
1	5	MS3057-12	CLAMP, CABLE		
1	4	MS3106 B20-27 P	CONNECTOR, PLUG, MALE		P3054
3		MWC22(7)U 97	P3054 PIN D	FANNING-STRIP TERM 6	
2		MWC22(7)U 7	P3054 PIN C	FANNING-STRIP TERM 5	
1		RG-174/U	P3054 PIN A	FANNING-STRIP TERM 7	

LIST OF MATERIAL			
MATERIAL	THE TECHNICAL MATERIEL CORP. MAMARONECK, NEW YORK		
FINISH	TITLE WIRING HARNESS, BRANCHED		
UNLESS OTHERWISE SPECIFIED DIMENSIONS ARE IN INCHES AND INCLUDE CHEMICALLY APPLIED OR PLATED FINISHES	DRAWN B.M.	DATE 2/8/65	FINAL APPROVAL [Signature]
DECIMALS .X ± .05 .XX ± .01 .XXX ± .005	CHECKED [Signature]	DATE	DATE
FRACTIONS ± 1/64 ANGLES ± 0° 30'	ELECT. DES. [Signature]	DATE	DATE
TOLERANCES	MECH. DES. [Signature]	DATE	DATE

CA1030
Ø