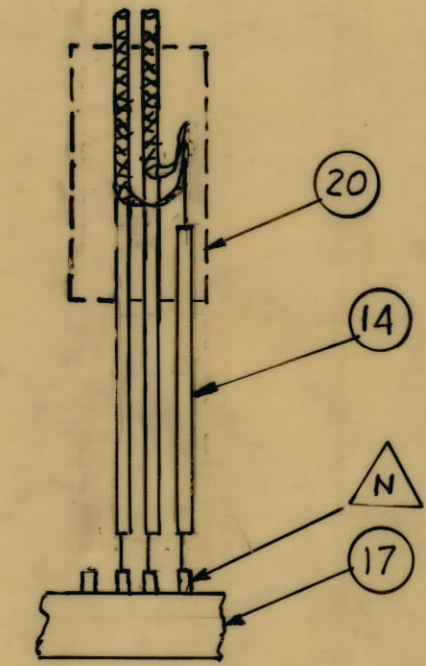


REVISIONS						
ZONE	SYM	DESCRIPTION	DATE	E.M.N. NO.	DRAFT	CHKD
X		EXPER. RELEASE	2-10-65		G.D.L.	
		ORIGINAL RELEASE FOR PRODUCTION	3-24-65		G.D.L.	
A		IT. 7 WAS MWC 22 (7) SJS; IT. 11 WAS MWC... SJS; IT. 12 WAS MWC... SJS; IT. 21 ADD.	4-26-65	13927	J.L.	
B		IT. 12 - MWC 22 (7) UO DELETED	6-16-65	14242	D.V.V.	
C		IT. 22, 23, & 24 ADDED	7/24/65	14875	R.V.	

NOTE:  
TIE SHIELDS FROM ITEMS 7 & 11 TOGETHER & SOLDER. SOLDER ITEM 14 TO ITEMS 7 & 11 AS SHOWN IN PICTORIAL. COMPLETE ASSY BY ADDING ITEM 20 OVER ALL WIRING.



— SYMBOL NOTES —  
 ○ DENOTES ITEM No'S  
 △ DENOTES PIN No'S  
 □ DENOTES BREAKOUT POINT  
 □ DENOTES IT. 21.

FROM	TO	REQ'D.	ITEM	PART NUMBER	FROM	DESCRIPTION	TO	SYMBOL
			24	MWC 22 (7) U 91	DS1004 AND DS1005	TER. STRIP		
			23	MWC 22 (7) U 91	DS1002 AND DS1003	TER. STRIP		
			22	MWC 22 (7) U 91	P1005 PIN A	TER. STRIP		
			4	21	LA101	BAND MARKER, CABLE		
				20	PX 830-6-1	INS. SLVG SHRINK		
				19	B5-100	SOLDER, TIN ALLOY		
				18	CD101-1MW	CORD, NYLON LACING		
				17	PL 225-5-P	CONNECTOR, PLUG, MALE		
				16	PX 830-18-1	INS. SLVG SHRINK.		
				15	RG174/U	P1005 PIN B BIND CENTER SHIELD	M1002 SHIELD (-)	
				14	MWC 22 (7) UO	SHIELDS 7 & 11	P1005 PIN N	
				13	MWC 22 (7) UO	DS1001	TERM. STRIP GROUND	
				12	DELETED			
				11	RG174/U	P1005 PIN P	R1011	
				10	MWC 20 (7) U1	P1005 PIN C	TERM. STRIP	
				9	MWC 22 (7) U5	P1005 PIN F	M1001 (+)	
				8	MWC 22 (7) U7	P1005 PIN E	DS1001	
				7	RG174/U	P1005 PIN M	R1011	
				6	MWC 22 (7) UB	M1001 (-)	P1005 PINK	
				5	MWC 22 (7) U96	R1065	P1005 PIN J	
				4	MWC 20 (7) UO	GROUND	P1005 PIN L	
				3	MWC 22 (7) U1	DS1002 & DS1003	TERM. STRIP	
				2	MWC 22 (7) U1	TERM. STRIP	DS1004 & DS1005	
				1	MWC 22 (7) U4	DS1006	P1005 PIN H	

BREAKOUT POINTS		J. ANGER		LIST OF MATERIAL	
1	CHG-3/CHGR/3	A4146		THE TECHNICAL MATERIEL CORP. MAMARONECK, NEW YORK	
QTY./UNIT	MODEL USED ON	ASSY. NO.		TITLE WIRING HARNESS, BRANCHED CABLE PANEL ASSY	
SCALE	CODE			DRAWN	G.D.L.
1:1	A			CHECKED	JCB
THE CONTENTS OF THIS DRAWING ARE THE EXCLUSIVE PROPERTY OF THE TECHNICAL MATERIEL CORP. ITS UNAUTHORIZED USE OR REPRODUCTION IN WHOLE OR IN PART IS STRICTLY FORBIDDEN.			DECIMALS	FRACTIONS	DATE
			.X ± .05	± 1/64	3-10-65
			.XX ± .01	ANGLES	3/24/65
			.XXX ± .005	± 0° 30'	DATE
					3/24/65
					CA 1027
					C

NOTES

CA 1027 C