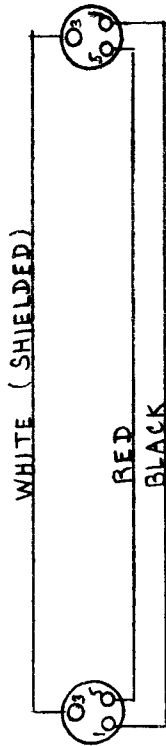
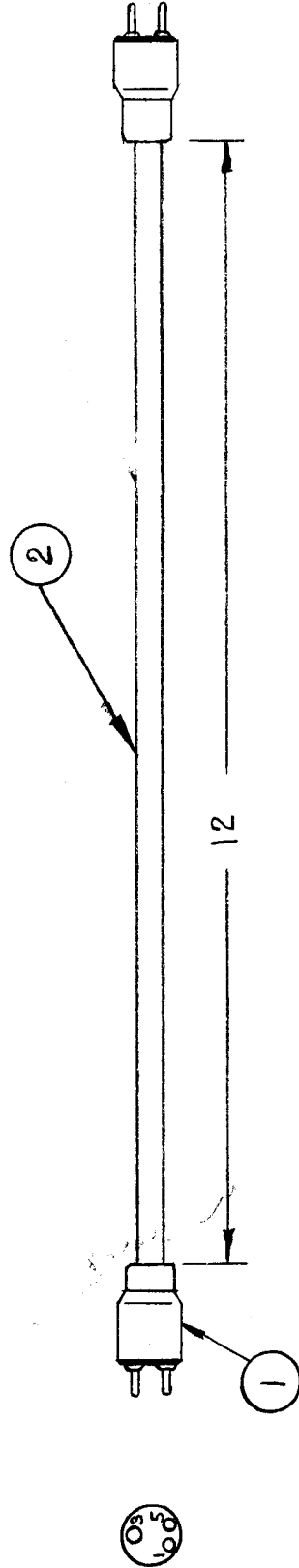


REQ. PER UNIT	USED ON	CA-101
	M DEL	
	ASSY. N.	
	DATE	3-8-60
	DDR-2	



WIRING DIAGRAM



1	2	WI-105	CABLE, THREE CONDUCTORS	SYMBOL
2	1	PL-103-3	CONNECTOR, SHIELDED	
REQ. ITEM	PART NO.	THE TECHNICAL MATERIEL CORP.		
		MAMARONECK, NEW YORK		
		CABLE ASSEMBLY		
		INTERCONNECT		
			STOCK SIZE	
			MATERIAL	
			TYPE & TEMPER	HEAT TREAT. SPEC.
			DRAWN	CHECKED
			FINISH & SPEC. NO.	ELEC. DES. APP. MECH. DES. APP.
				CA-101

ISSUE ITEM

CHANGED FROM

DATE

CH. NO.

DRAFTS

CHECKER

ENG. APP.

SCALE:

TOLERANCES

MAXIMUM ALLOWABLE TOLERANCES HAVE BEEN DETERMINED AND ANY DEVIATIONS WILL BE CAUSE FOR REJECTION. REMOVE ALL BURRS AND SHARP EDGES

DEC. DIM. ±

FRAG. DIM. ±

ANGULAR DIM. ±

3/8/60

WF

J.D.

03 100

03 100

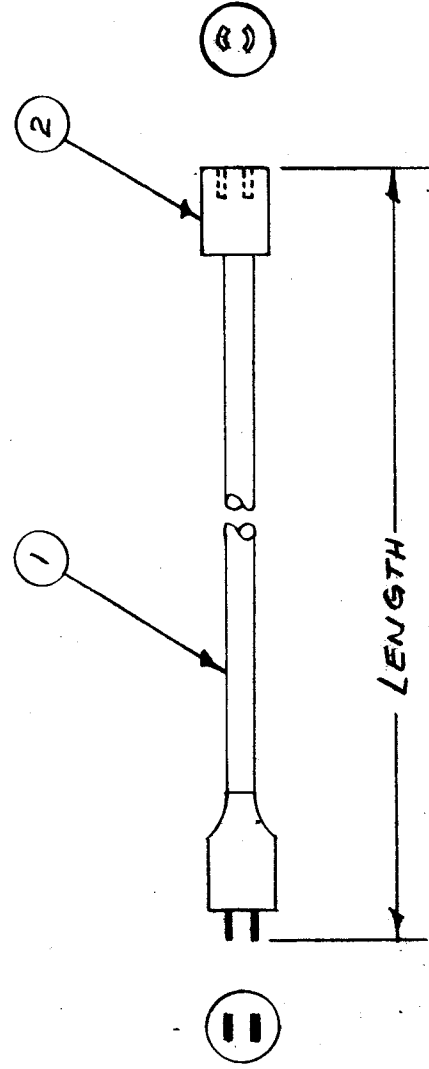
03 100

03 100



IF IT IS FOUND DESIRABLE TO CHANGE ANY TOLERANCE OR OTHER DETAIL SPECIFIED ON THIS DRAWING NOTIFY THE PURCHASER PROMPTLY.

MAXIMUM ALLOWABLE TOLERANCES HAVE BEEN DETERMINED AND DEVIATIONS WILL BE CAUSE FOR REJECTION. REMOVE ALL BURRS AND SHARP EDGES



TYPE DESIGNATION:

CA-103 - 72

TMC PART NO. LENGTH IN INCHES

CA-103

MODEL	PROJECT NO.	ASSY. N.	DATE
XFK			

STANDARD DRAWING

USED ON

B	1	TYPE DESIG. ADDED & NOTE REMOVED	5/27/51	2	6	WIDE OR
A	1	REDRAWN, NOTE ADDED	11/1/53	1	16	WIDE USE
ISSUE ITEM	CHANGED FROM	DATE	CN. NO.	DRAFTS	CHECKER	ENG. APP.
TOLERANCES						
SCALE						
DRILL, PUNCH, COMMERCIAL STOCK SIZES AND MANUFACTURERS TOLERANCES ARE NOT INCLUDED.						
ALL OTHERS	DEC. DIM. ±					
	FRAC. DIM. ±					
	ANGULAR DIM. ±					

1	2	PL-100	TWIST LOCK PLUG, FEMALE	SYMBOL
1	1	CA-102-2	CORD SET	
REQ. ITEM	PART NO.	DESCRIPTION		
		THE TECHNICAL MATERIEL CORP.		
		MAMARONECK, NEW YORK		
		CORD ASSY.		
		STOCK SIZE		
		MATERIAL		
		TYPE & TEMPER		
		HEAT TREAT. SPEC.		
		FINISH & SPEC. NO.		
		WEIGHT PER PC.		
		DRAWN	16 11-27-53	G.T.O
		CHECKED		
		ELEC. DES. APP.		
		MECH. DES. APP.		
		FINAL APPROVAL		
				CA-103

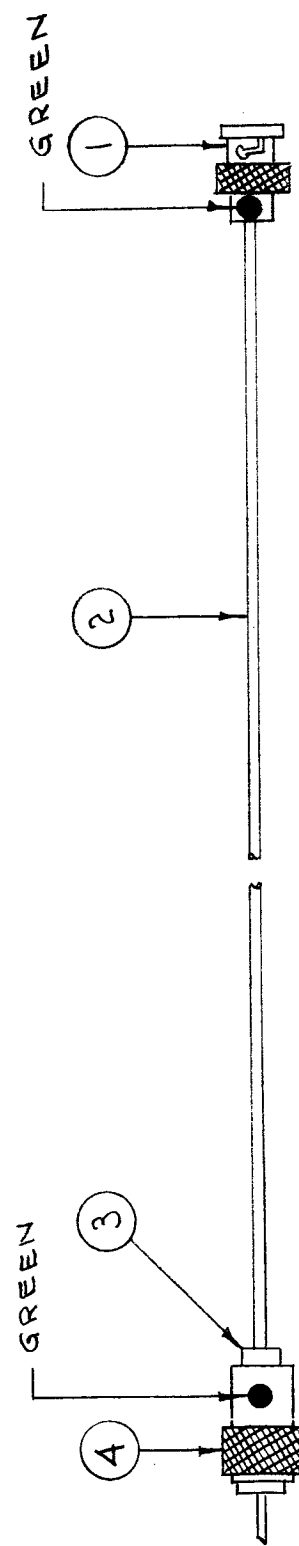
IF IT IS FOUND DESIRABLE TO CHANGE ANY TOLERANCE OR OTHER DETAIL SPECIFIED ON THIS DRAWING NOTIFY THE PURCHASER PROMPTLY.

MAXIMUM ALLOWABLE TOLERANCES HAVE BEEN DETERMINED AND DEVIATIONS WILL BE CAUSE FOR REJECTION. REMOVE ALL BURRS AND SHARP EDGES

CA-104

USED ON  
 MODEL PROJECT NO. DATE  
 DDR-2 3-9-54

REQ. PER UNIT 1



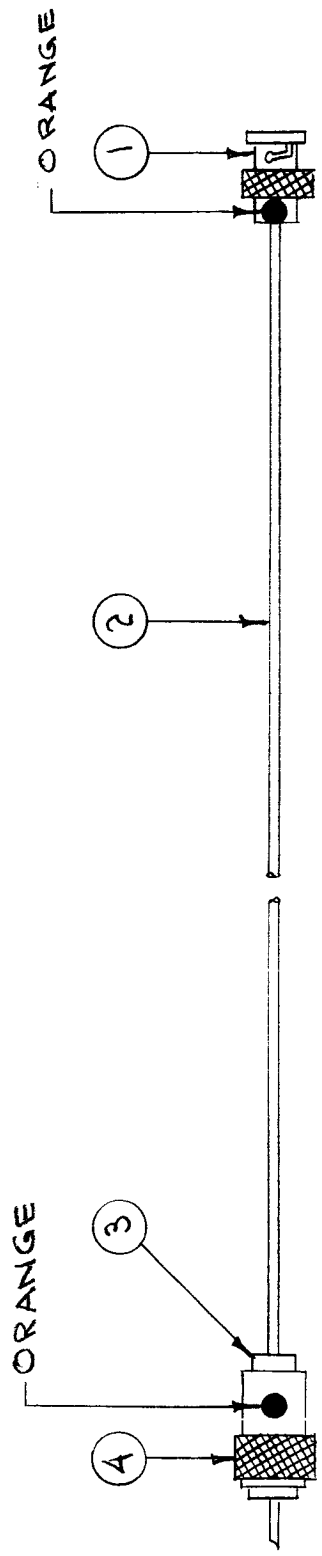
OVERALL LENGTH 13"  
 DCU-DVM INTERCONNECT

1	4	PL-259	PLUG		
1	3	UG-176/U	ADAPTER		
12"	2	RG-59/U	CABLE, COAXIAL		
1	1	UG-260/U	PLUG		
REQ. ITEM		PART NO.	DESCRIPTION		SYMBOL
			THE TECHNICAL MATERIEL CORP.		
			MAMARONECK, NEW YORK		
			CABLE, RF-COAXIAL		
			DCU-DVM INTERCONNECT		
			C.D.D. 3-9-54	A. J. Jo	WJC
			DRAWN	ELEC. DES. APP.	MECH. DES. APP.
			JAB	A. J. Jo	WJC
			CHECKED	FINAL APPROVAL	
					CA-104

ISSUE ITEM	CHANGED FROM	DATE	CN. NO.	DRAFTS	CHECKER	ENG. APP.
TOLERANCES						
SCALE						
DRILL, PUNCH, COMMERCIAL STOCK SIZES AND MANUFACTURERS TOLERANCES ARE NOT INCLUDED.						
ALL OTHERS	DEC. DIM. ±	FRAC. DIM. ±	ANGULAR DIM. ±			

IF IT IS FOUND DESIRABLE TO CHANGE ANY TOLERANCE OR OTHER DETAIL SPECIFIED ON THIS DRAWING NOTIFY THE PURCHASER PROMPTLY.

MAXIMUM ALLOWABLE TOLERANCES HAVE BEEN DETERMINED AND DEVIATIONS WILL BE CAUSE FOR REJECTION. REMOVE ALL BURRS AND SHARP EDGES



OVERALL LENGTH 13"  
DCU-DVM INTERCONNECT

CA-105

USED ON  
PROJECT NO.  
MODEL  
ASSY. NO.  
DATE  
3-9-54

REQ. PER UNIT  
1

DDR-2

1	A	PL-259	PLUG						
1	3	UG-176/U	ADAPTER						
12"	2	RG-59/U	CABLE, COAXIAL						
1	1	UG-260/U	PLUG						
REQ. ITEM		PART NO.	DESCRIPTION	SYMBOL					
				THE TECHNICAL MATERIEL CORP. MAMARONECK, NEW YORK					
				CABLE, RF, COAXIAL					
				DCU-DVM INTERCONNECT					
				C.D.D. 3-9-54		A. J. Jo		WDC	
				DRAWN		ELEC. DES. APP.		MECH. DES. APP.	
				J. A. B.		A. J. Jo		WDC	
				CHECKED		FINAL APPROVAL			
				CA-105					

ISSUE ITEM	CHANGED FROM	DATE	CN. NO.	DRAFTS	CHECKER	ENG. APP.
TOLERANCES						
SCALE						
DEC. DIM. ±						
FRAC. DIM. ±						
ANGULAR DIM. ±						
DRILL, PUNCH, COMMERCIAL STOCK SIZES AND MANUFACTURERS TOLERANCES ARE NOT INCLUDED.						

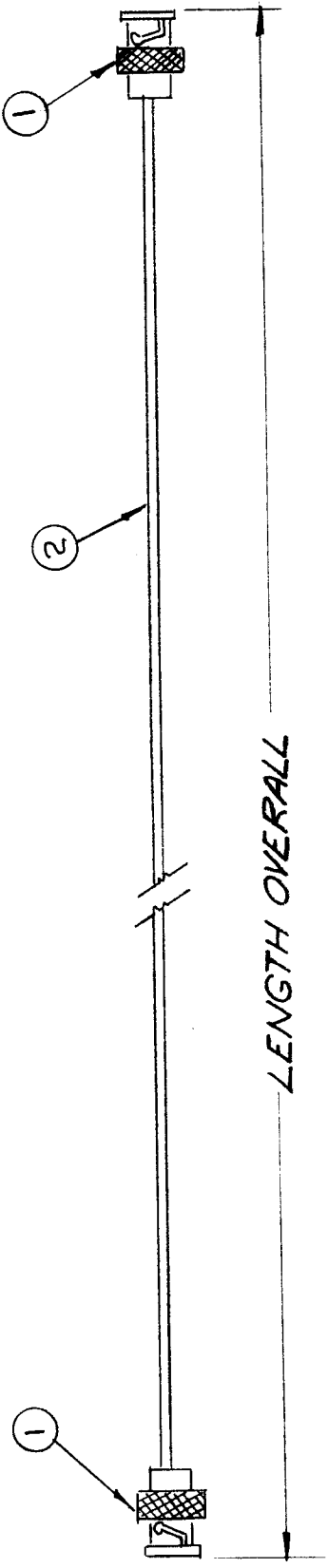
CA-107D

IF IT IS FOUND DESIRABLE TO CHANGE ANY TOLERANCE OR OTHER DETAIL SPECIFIED ON THIS DRAWING NOTIFY THE PURCHASER PROMPTLY.

MAXIMUM ALLOWABLE TOLERANCES HAVE BEEN DETERMINED AND DEVIATIONS WILL BE CAUSE FOR REJECTION. REMOVE ALL BURRS AND SHARP EDGES

**NO LONGER USED**  
 DIRECTLY REPLACED BY  
 CA-480-6

USED ON  
 MODEL PROJECT NO. ASSY. NO. DATE



NOMENCLATURE TO BE AS FOLLOWS:

CA-107 - 24  
 TMC DWG. NO. LENGTH OVERALL (INCHES)

NO LONGER USED

D	1	DWG. NO LONGER USED	9/14/61	5573	IL	ASB
C	1	CA-107-27 WAS CA-107	9/25/57	3	SC	W.D.
B	1	WAS CA-17A	7/25/54	CR46	15	W.D.
A	1	WAS CA-170	6/17/53	1	C.D.D.	W.D. P. J.
ISSUE ITEM	CHANGED FROM	DATE	CN. NO.	DRAFTS	CHECKER	ENG. APP.

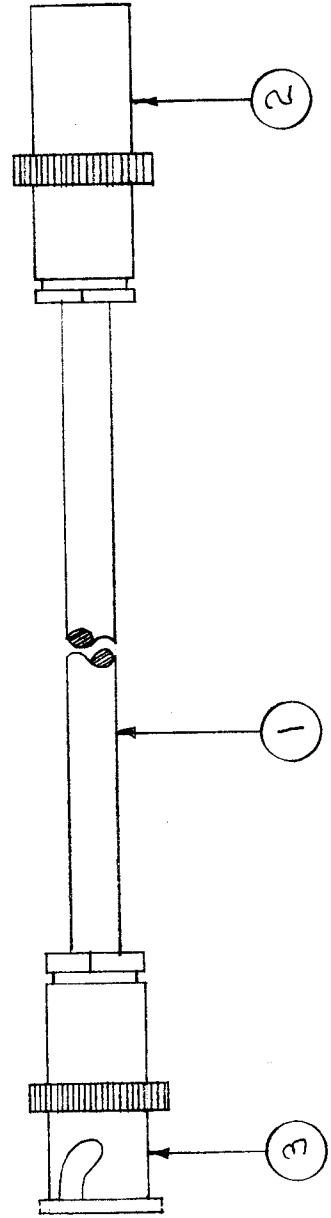
TOLERANCES		SCALE
DEC. DIM. ±	FRAC. DIM. ±	ANGULAR DIM. ±
DRILL, PUNCH, COMMERCIAL STOCK SIZES AND MANUFACTURERS TOLERANCES ARE NOT INCLUDED.		

REQ.	ITEM	PART NO.	DESCRIPTION	SYMBOL
2	RG-59U		CABLE	
2	1	UG-260/U	PLUG	
STOCK SIZE				
MATERIAL				
WEIGHT PER FT.				
TYPE & TEMPER				
HEAT TREAT. SPEC.				
FINISH & SPEC. NO.				
THE TECHNICAL MATERIEL CORP. MAMARONECK, NEW YORK				
CABLE ASS'Y. COAXIAL				
DMK INTERCONNECT				
DRAWN				
ELEC. DES. APP.				
MECH. DES. APP.				
CHECKED				
FINAL APPROVAL				
SUPERSEDES				
CA-107				
AEM046				

IF IT IS FOUND DESIRABLE TO CHANGE ANY TOLERANCE OR OTHER DETAIL SPECIFIED ON THIS DRAWING NOTIFY THE PURCHASER PROMPTLY.

MAXIMUM ALLOWABLE TOLERANCES HAVE BEEN DETERMINED AND DEVIATIONS WILL BE CAUSE FOR REJECTION. REMOVE ALL BURRS AND SHARP EDGES

UG 260U



CA-108

USED ON

PER UNIT	MODEL	PROJECT NO.	ASSY. NO.	DATE
1	VOX	101		11/28/53
1	VOX-1/2			2-7-55

REQ. ITEM	ITEM	PART NO.	DESCRIPTION	SYMBOL
X 4	BS-100		SOLDER, SOFT	
1	UG-260/U		CONDUCTOR, BNC	
1	UG-261/U		CONDUCTOR, BNC	
6'0"	RG 59/U		CABLE, R.F.	

THE TECHNICAL MATERIEL CORP.	
MAMARONECK. NEW YORK	
AUXILIARY SERVICE CABLE	
POWER SUPPLY TO RE. CHASSIS	
E.M.B. 6/26/54	A J T
DRAWN	ELEC. DES. APP.
MECH. DES. APP.	
16	1-13-53
A J T	
CHECKED	
FINAL APPROVAL	
SEPERCEDES	CA-108
AEM-094	

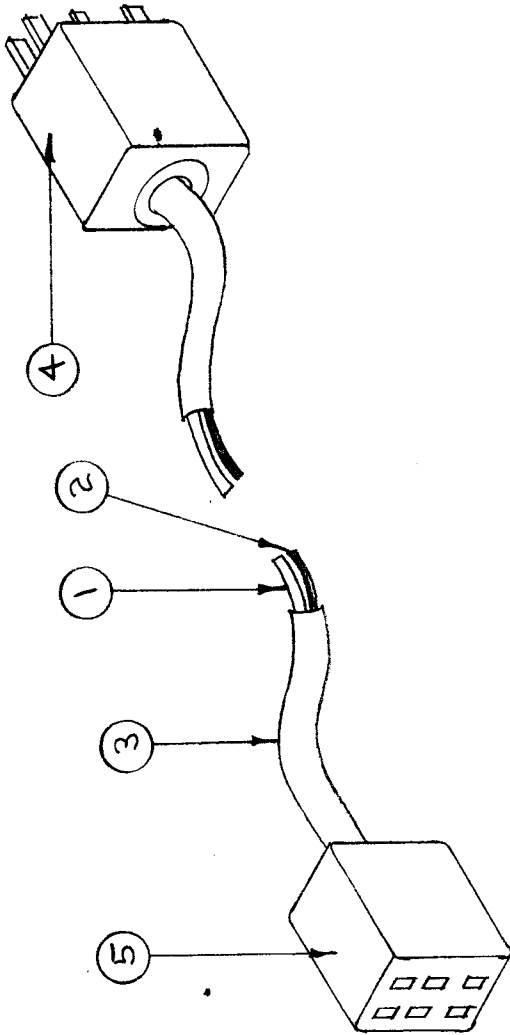
1	REDRAWN - NO CHANGE	1	CDD	16	OK
ISSUE ITEM	CHANGED FROM	DATE	CN. NO.	DRAFTS CHECKER	ENG. APP.
TOLERANCES					
SCALE					
DRILL, PUNCH, COMMERCIAL STOCK SIZES AND MANUFACTURERS TOLERANCES ARE NOT INCLUDED.					
DEC. DIM. ±					
FRAC. DIM. ±					
ANGULAR DIM. ±					





IF IT IS FOUND DESIRABLE TO CHANGE ANY TOLERANCE OR OTHER DETAIL SPECIFIED ON THIS DRAWING NOTIFY THE PURCHASER PROMPTLY.

MAXIMUM ALLOWABLE TOLERANCES HAVE BEEN DETERMINED AND DEVIATIONS WILL BE CAUSE FOR REJECTION. REMOVE ALL BURRS AND SHARP EDGES



CA-110

USED ON

PER UNIT	MODEL	PROJECT NO.	ASSY. NO.	DATE
1	VOX	101		6-27-53
1	VOX-2			2-7-55

ITEM 5	WIRING TABLE	ITEM 4
1	BLUE	1
2	BLACK	2
3	ORANGE	3
4	RED	4
5	GREEN & SHIELD OF ITEM 2	5
6	CENTER CONDUCTOR OF ITEM 2. DO NOT USE	6
	WHITE CONNECTOR OF ITEM 1, BUT CUT ENDS AT CABLE BREAKOUT.	

ISSUE ITEM	1	REDRAWN - NO CHANGE	1	DATE	10/13/53	CHECKER	ENG. APP.
		CHANGED FROM					
TOLERANCES		SCALE		1			

DEC. DIM. ±  
FRAC. DIM. ±  
OTHERS ANGULAR DIM. ±

DRILL, PUNCH, COMMERCIAL STOCK SIZES AND MANUFACTURERS TOLERANCES ARE NOT INCLUDED.

X	6	BS-100	SOLDER, SOFT		
1	5	PL-101-2	CONNECTOR, FEMALE		
1	4	PL-101-1	CONNECTOR, MALE		
6'-0"	3	PX-100-1.29A	INSULATION, SLEEVING		
6'-0"	2	WI-101-1	CABLE, 1 CONDUCTOR		
6'-0"	1	WI-100-5	CABLE, 6 CONDUCTOR		
REQ. ITEM	PART NO.	DESCRIPTION		SYMBOL	
		THE TECHNICAL MATERIEL CORP.			
		MAMARONECK, NEW YORK			
		AUXILIARY SERVICE CABLE			
		POWER SUPPLY TO MASTER OSC.			
				EM.B. 6-27-53	ATT
				DRAWN	ELEC. DES. APP.
				1-13-53	ATT
				CHECKED	FINAL APPROVAL
				SUPERCEDES	CA-110
				AEM-093-A	







**RELEASED**

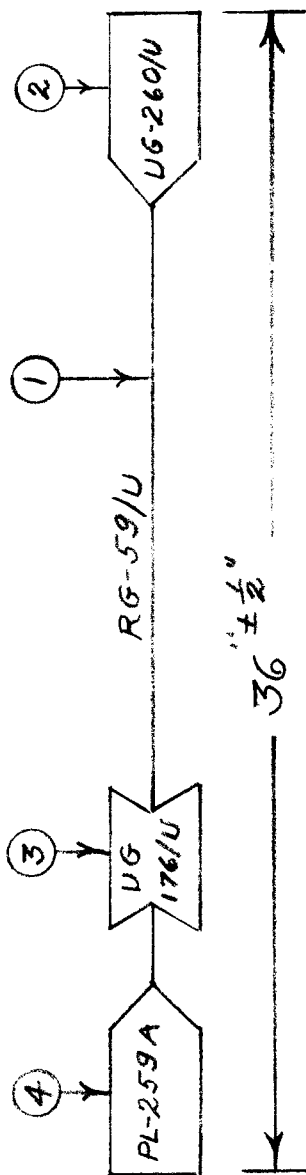
CA-128

IF IT IS FOUND DESIRABLE TO CHANGE ANY TOLERANCE OR OTHER DETAIL SPECIFIED ON THIS DRAWING NOTIFY THE PURCHASER PROMPTLY.

MAXIMUM ALLOWABLE TOLERANCES HAVE BEEN DETERMINED AND DEVIATIONS WILL BE CAUSE FOR REJECTION. REMOVE ALL BURRS AND SHARP EDGES

USED ON

MODEL	PROJECT NO.	ASS'Y. NO.	DATE
XFL-2	155	A-209	10-23-52



REQ. ITEM	PART NO.	DESCRIPTION	SYMBOL
X 5	BS-100	Solder, Soft	
1 4	PL-259A	Connector UHF	
1 3	UG-176/U	Adapter, Reducer	
1 2	UG-260/U	Connector BNC	
35"	RG-59/U	Cable R.F	
STOCK SIZE		THE TECHNICAL MATERIEL CORP. MAMARONECK, NEW YORK	
MATERIAL		CABLE, R.F	
WEIGHT PER PC.			
TYPE & TEMPER		DRAWN <i>AoToJo</i> ELEC. DES. APP. MECH. DES. APP. <i>MA</i>	
HEAT TREAT. SPEC.		CHECKED <i>MA</i> FINAL APPROVAL	
FINISH & SPEC. NO.		CA-128	

ISSUE ITEM	CHANGED FROM	DATE	CN. NO.	DRAFTS	CHECKER	ENG. APP.
TOLERANCES						
DEC. DIM. ±						
FRAC. DIM. ±						
ANGULAR DIM. ±						
DRILL, PUNCH, COMMERCIAL STOCK SIZES AND MANUFACTURERS TOLERANCES ARE NOT INCLUDED.						

# STANDARD DRAWING

CA-130 B

IF IT IS FOUND DESIRABLE TO CHANGE ANY TOLERANCE OR OTHER DETAIL SPECIFIED ON THIS DRAWING NOTIFY THE PURCHASER PROMPTLY.

MAXIMUM ALLOWABLE TOLERANCES HAVE BEEN DETERMINED AND DEVIATIONS WILL BE CAUSE FOR REJECTION. REMOVE ALL BURRS AND SHARP EDGES

USED ON

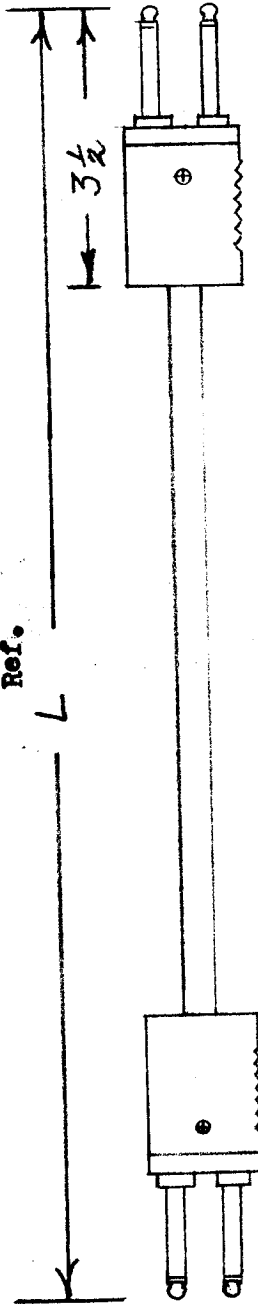
DATE

ASSY. NO.

PROJECT NO.

MODEL

Ref.



TMC No.	ADC No.	Nomenclature	L
CA-130-1	PJ-11	1 Foot	1-1/2'
CA-130-2	PJ-12	2 Feet	2-1/2'
CA-130-3	PJ-13	3 Feet	3-1/2'
CA-130-4	PJ-14	4 Feet	4-1/2'
CA-130-5	PJ-15	5 Feet	5-1/2'
CA-130-6	PJ-10	10 Feet	10-1/2'

Specifications:  
Plugs shall be of twin type, insulated for 500 volts R.M.S. breakdown.  
Cord shall be tinned copper 2-conductors stranded wire, completely shielded and insulated. Heavy braid cover. Shield grounded at both ends of cord.

Ref. Audio Development Co.

REQ. ITEM	PART NO.	DESCRIPTION	SYMBOL
		THE TECHNICAL MATERIEL CORP. MAMARONECK. NEW YORK	
STOCK SIZE		CORD, AUDIO-PATCH	
MATERIAL	WEIGHT PER FC.		
TYPE & TEMPER	ELEC. DES. APP.		
HEAT TREAT. SPEC.	CHECKED		
FINISH & SPEC. NO.	FINAL APPROVAL		

ISSUE ITEM	CHANGED FROM	DATE	CN. NO.	DRAFTS CHECKER	ENG. APP.
B 1	CA-130-6 ADDED	2-20-63	14	JA	
A 1	- 6 Added	8/5/59		JA	
TOLERANCES					
DEC. DIM. ±	DRILL, PUNCH, COMMERCIAL STOCK				
FRAC. DIM. ±	SIZES AND MANUFACTURERS				
ANGULAR DIM. ±	TOLERANCES ARE NOT INCLUDED.				

CA-130 B

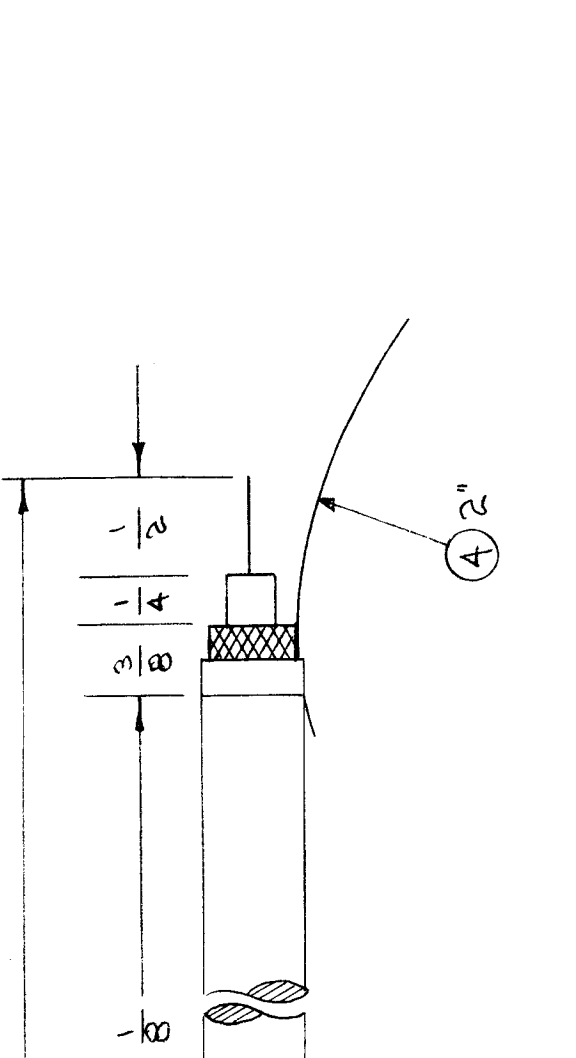


RELEASED

IF IT IS FOUND DESIRABLE TO CHANGE ANY TOLERANCE OR OTHER DETAIL SPECIFIED ON THIS DRAWING NOTIFY THE PURCHASER PROMPTLY.

MAXIMUM ALLOWABLE TOLERANCES HAVE BEEN DETERMINED AND DEVIATIONS WILL BE CAUSE FOR REJECTION. REMOVE ALL BURRS AND SHARP EDGES

USED ON  
 MODEL PROJECT NO. ASSY. NO. DATE  
 FFR 104 A-263 11-28-52



4"	4	WL-103-1	SHIELD, FLEXIBLE	
2	3	CU-101-2	FERRULE (OUTER)	
2	2	CU-101-1	FERRULE (INNER)	
10 <sup>3</sup> / <sub>8</sub>	1	RG 58/U	CABLE, RF	
REQ. ITEM		PART NO.	DESCRIPTION	SYMBOL
THE TECHNICAL MATERIEL CORP. MAMARONECK, NEW YORK				
R.F. CABLE ASSY.				
STOCK SIZE				
MATERIAL WEIGHT PER PC.				
TYPE & TEMPER				
HEAT TREAT. SPEC.				
FINISH & SPEC. NO.				

B 1	ITEM 1 WAS UG 58/U	9/28/61	5602	IA	OB
A 1	ITEM 2 ADDED	11-28-52	1	C.D.D.	OB
ISSUE ITEM	CHANGED FROM	DATE	CN. NO.	DRAFTS	CHECKER ENG. APP.
TOLERANCES					
DEC. DIM. ±					
FRAC. DIM. ±					
ANGULAR DIM. ±					
DRILL, PUNCH, COMMERCIAL STOCK SIZES AND MANUFACTURERS TOLERANCES ARE NOT INCLUDED.					



IF IT IS FOUND DESIRABLE TO CHANGE ANY TOLERANCE OR OTHER DETAIL SPECIFIED ON THIS DRAWING NOTIFY THE PURCHASER PROMPTLY.

MAXIMUM ALLOWABLE TOLERANCES HAVE BEEN DETERMINED AND DEVIATIONS WILL BE CAUSE FOR REJECTION. REMOVE ALL BURRS AND SHARP EDGES

RELEASED

CA-136

A

USED ON

DATE

ASSY. NO.

PROJECT NO.

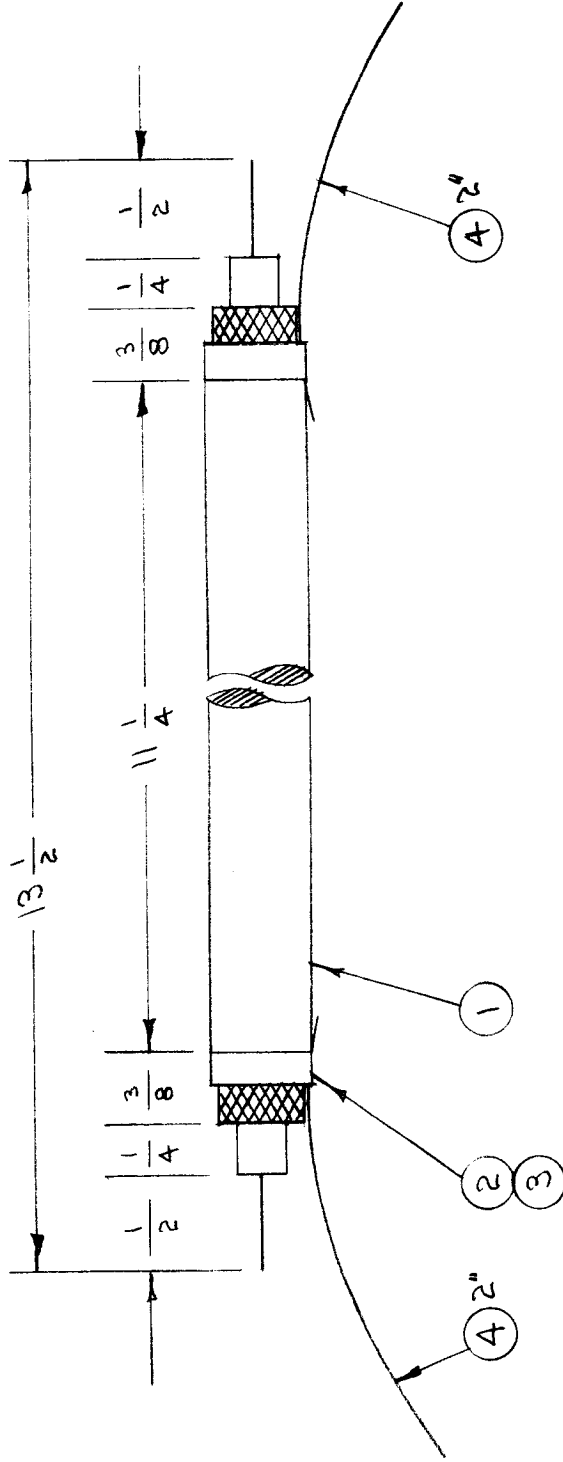
MODEL

11-28-57

A-263

104

FFR



REQ. ITEM	ITEM	PART NO.	DESCRIPTION	SYMBOL
4	4	WL-103-1	SHIELD, FLEXIBLE	
2	3	CU-101-2	FERRULE (OUTER)	
2	2	CU-101-1	FERRULE (INNER)	
1	1	RG 58/U	CABLE, RF	

THE TECHNICAL MATERIEL CORP. MAMARONECK, NEW YORK	
RF CABLE ASSY.	
MATERIAL	WEIGHT PER PC.
TYPE & TEMPER	
HEAT TREAT. SPEC.	
FINISH & SPEC. NO.	

ISSUE ITEM	CHANGED FROM	DATE	C.N. NO.	DRAFTS/CHECKER	ENG. APP.
A 1	ITEM 2 ADDED	11-28-57	1	C.D.P.	[Signature]
TOLERANCES					
DEC. DIM. ±					
ALL FRAC. DIM. ±					
OTHERS ANGULAR DIM. ±					
DRILL, PUNCH, COMMERCIAL STOCK SIZES AND MANUFACTURERS TOLERANCES ARE NOT INCLUDED.					

C.D.P.	11-28-57	G.T.O.	[Signature]
DRAWN		ELEC. DES. APP.	
	12/3/57	MECH. DES. APP.	
CHECKED		FINAL APPROVAL	
		CA-136	A

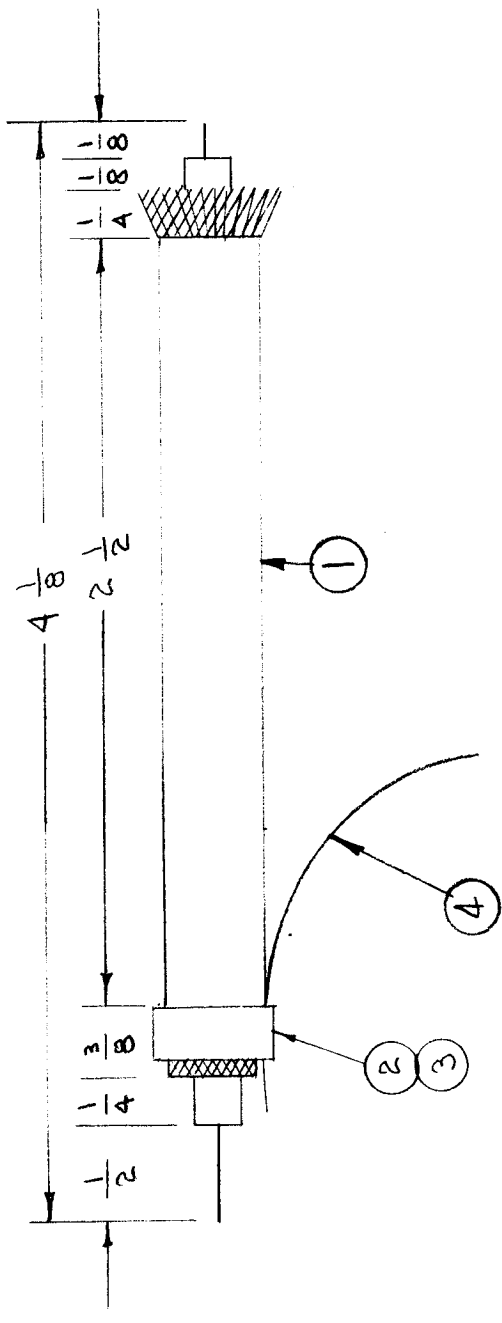
IF IT IS FOUND DESIRABLE TO CHANGE ANY TOLERANCE OR OTHER DETAIL SPECIFIED ON THIS DRAWING NOTIFY THE PURCHASER PROMPTLY.

MAXIMUM ALLOWABLE TOLERANCES HAVE BEEN DETERMINED AND DEVIATIONS WILL BE CAUSE FOR REJECTION. REMOVE ALL BURRS AND SHARP EDGES

RELEASED

CA-137 C

USED ON		
MODEL	PROJECT NO.	ASSY. NO.
FFR	10A	A-277
		DATE
		12-8-54



REQ.	ITEM	PART NO.	DESCRIPTION	SYMBOL
2"	A	WL-103-1	SHIELD, FLEXIBLE.	
1	3	CU-101-2	FERRULE (OUTER)	
1	2	CU-101-1	FERRULE (INNER)	
A	1	RG 58/U	CABLE, COAXIAL	

THE TECHNICAL MATERIEL CORP. MAMARONECK, NEW YORK
CABLE ASSY., R.F.
C.D.D. 12-8-54
G.T.O.
MECH. DES. APP.
12/8/54
CHECKED
FINAL APPROVAL
CA-137 C

C 1	ITEM (4) RELOCATED	1/27/52	7712	CS	W.D.
B 1	ITEM 1 WAS UG 58/U	9/28/54	5602	KA	W.D.
A 1	2 1/2 WAS 2 5/8	4/20/53	1	C.D.D.	W.D.
	A 1/8 WAS 1/4				
ISSUE ITEM	CHANGED FROM	DATE	CN. NO.	DRAFTS	CHECKER/ENG. APP.
TOLERANCES					
SCALE					
DRILL, PUNCH, COMMERCIAL STOCK SIZES AND MANUFACTURERS TOLERANCES ARE NOT INCLUDED.					
ALL OTHERS	DEC. DIM. ±				
	FRAC. DIM. ±				
	ANGULAR DIM. ±				

IF IT IS FOUND DESIRABLE TO CHANGE ANY TOLERANCE OR OTHER DETAIL SPECIFIED ON THIS DRAWING NOTIFY THE PURCHASER PROMPTLY.

MAXIMUM ALLOWABLE TOLERANCES HAVE BEEN DETERMINED AND DEVIATIONS WILL BE CAUSE FOR REJECTION. REMOVE ALL BURRS AND SHARP EDGES

RELEASED

CA-138

USED ON

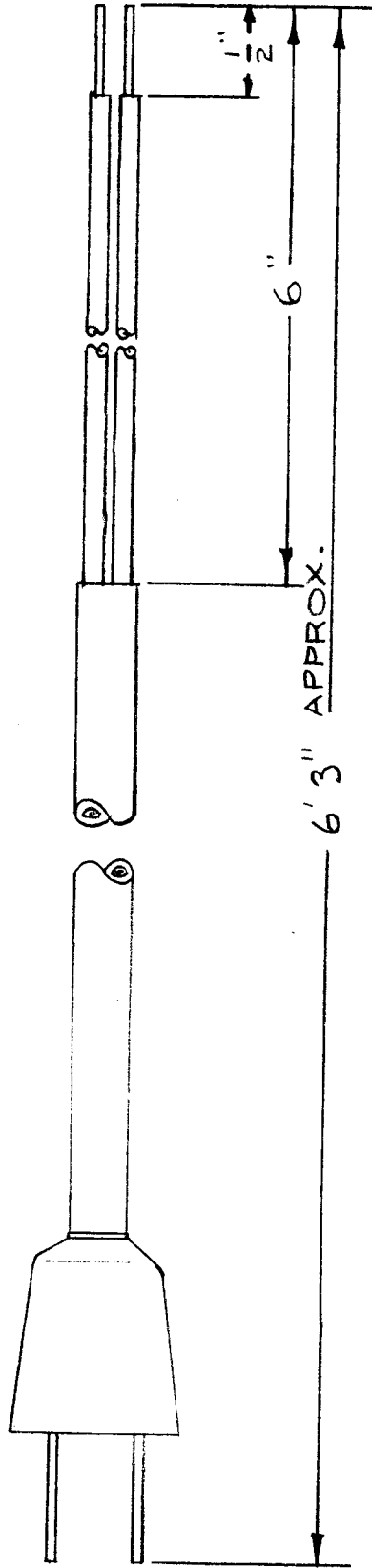
MODEL PROJECT NO. ASSY. NO. DATE

CK-2

168

A-264

12-2-52



USE CA-102-2 MODIFIED AS SHOWN

REQ. ITEM	PART NO.	DESCRIPTION	SYMBOL
		THE TECHNICAL MATERIEL CORP. MAMARONECK. NEW YORK	
STOCK SIZE		POWER CABLE	
MATERIAL			
WEIGHT PER PC.			
TYPE & TEMPER			
HEAT TREAT. SPEC.			
FINISH & SPEC. NO.			

ISSUE ITEM	CHANGED FROM	DATE	CN. NO.	DRAFTS	CHECKER	ENG. APP.
SCALE FULL SIZE						
TOLERANCES						
DEC. DIM. ±	DRILL, PUNCH, COMMERCIAL STOCK					
FRAC. DIM. ±	SIZES AND MANUFACTURERS					
ANGULAR DIM. ±	TOLERANCES ARE NOT INCLUDED.					
ALL OTHERS	FINAL APPROVAL					
	CA-138					

IF IT IS FOUND DESIRABLE TO CHANGE ANY TOLERANCE OR OTHER DETAIL SPECIFIED ON THIS DRAWING NOTIFY THE PURCHASER PROMPTLY.

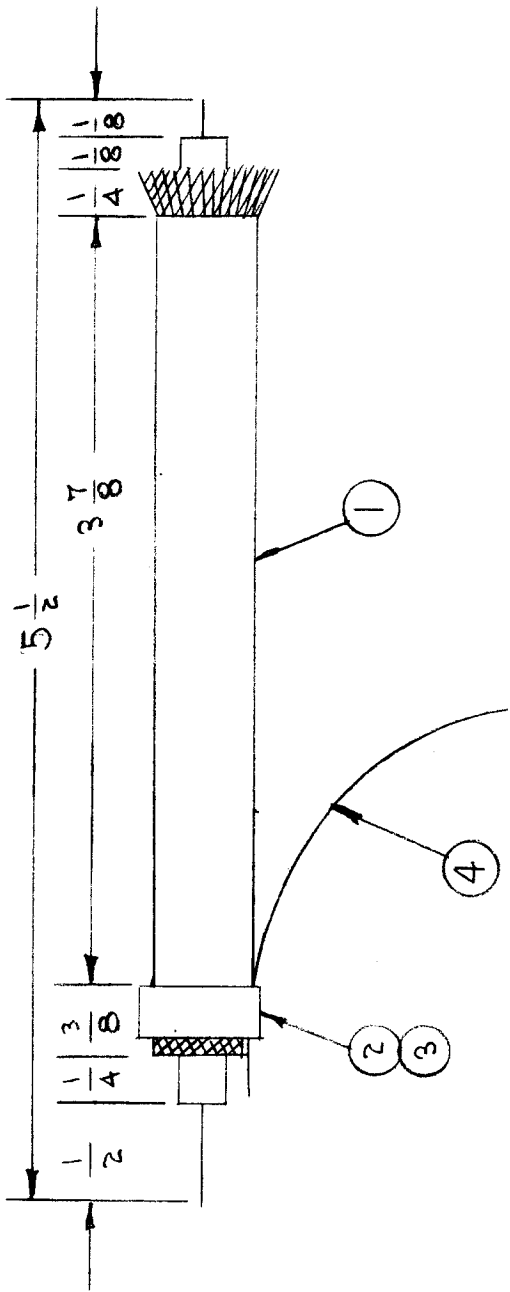
MAXIMUM ALLOWABLE TOLERANCES HAVE BEEN DETERMINED AND DEVIATIONS WILL BE CAUSE FOR REJECTION. REMOVE ALL BURRS AND SHARP EDGES

RELEASED

CA-139 B

USED ON

MODEL	PROJECT NO.	ASSY. NO.	DATE
FFR	104	A-247	12-8-52



REQ. ITEM	PART NO.	DESCRIPTION	SYMBOL
2" 4	WL-103-1	SHIELD, FLEXIBLE	
1 3	CU-101-2	FERRULE (OUTER)	
1 2	CU-101-1	FERRULE (INNER)	
5 1/2" 1	RG 58/U	CABLE, COAXIAL	

THE TECHNICAL MATERIEL CORP.  
MAMARONECK, NEW YORK  
CABLE ASSY. R.F.

STOCK SIZE	#	WEIGHT PER PC.	#
MATERIAL	#	TYPE & TEMPER	#
HEAT TREAT. SPEC.	#	FINISH & SPEC. NO.	#
C.D.D. 12-8-52	G.T.O	ELEC. DES. APP.	MECH. DES. APP.
DRAWN	CHKD		
DATE	BY		
12/8/52	AM		
FINAL APPROVAL		CA-139 B	

ISSUE ITEM	CHANGED FROM	DATE	CN. NO.	DRAFTS	CHECKER	ENG. APP.
B 1	ITEM (A) RELOCATED	11-27-52	7712	FS	JWB	JWB
A 1	ITEM 1 WAS UG58/U	9/29/51	5602	LE	JWB	JWB
TOLERANCES						
SCALE						
DRILL, PUNCH, COMMERCIAL STOCK SIZES AND MANUFACTURERS TOLERANCES ARE NOT INCLUDED.						
ALL	DEC. DIM. ±					
OTHERS	FRAC. DIM. ±					
	ANGULAR DIM. ±					

IF IT IS FOUND DESIRABLE TO CHANGE ANY TOLERANCE OR OTHER DETAIL SPECIFIED ON THIS DRAWING NOTIFY THE PURCHASER PROMPTLY.

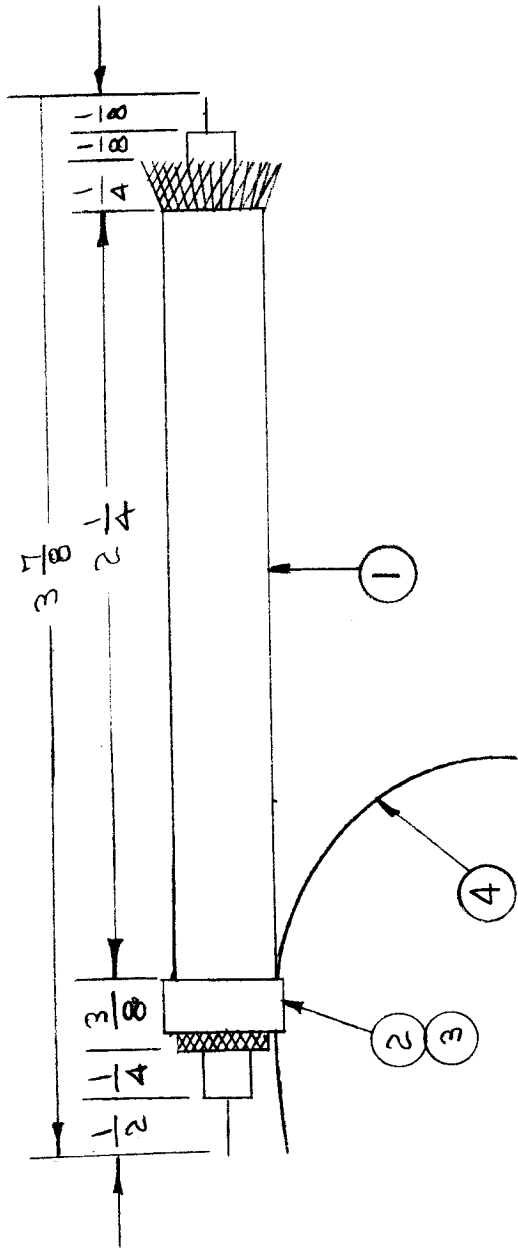
MAXIMUM ALLOWABLE TOLERANCES HAVE BEEN DETERMINED AND DEVIATIONS WILL BE CAUSE FOR REJECTION. REMOVE ALL BURRS AND SHARP EDGES

**RELEASED**

CA-1A0 B

USED ON

MODEL	PROJECT NO.	ASSY. NO.	DATE
FFR	104	A-277	12-8-52



REQ.	ITEM	PART NO.	DESCRIPTION	SYMBOL
2"	4	WL-103-1	SHIELD, FLEXIBLE	
1	3	CU-101-2	FERRULE (OUTER)	
1	2	CU-101-1	FERRULE (INNER)	
3 7/8	1	RG 58/U	CABLE, COAXIAL	

THE TECHNICAL MATERIEL CORP.	DESCRIPTION
MAMARONECK, NEW YORK	
CABLE ASSY., R.F.	

STOCK SIZE	#
MATERIAL	#
WEIGHT PER PC.	#
TYPE & TEMPER	#
HEAT TREAT. SPEC.	#
FINISH & SPEC. NO.	#

C.D.D. 12-8-52	ELEC. DES. APP.	MECH. DES. APP.
Drawn	G.T.O	
Checked	12/8/52	
FINAL APPROVAL		
CA-1A0		B

B	1	ITEM(4) RELOCATED	11-27-62	7712	68	F.V.R.
A	2	2 1/4 WAS 1 7/8	4/20/53	1	C.D.D.	
A	1	3 7/8 WAS 3 1/2				

ISSUE ITEM	CHANGED FROM	DATE	CN. NO.	DRAFTS	CHECKER	ENG. APP.

TOLERANCES		SCALE
DEC. DIM. ±		
FRAC. DIM. ±		
ANGULAR DIM. ±		

DRILL, PUNCH, COMMERCIAL STOCK SIZES AND MANUFACTURERS TOLERANCES ARE NOT INCLUDED.

IF IT IS FOUND DESIRABLE TO CHANGE ANY TOLERANCE OR OTHER DETAIL SPECIFIED ON THIS DRAWING NOTIFY THE PURCHASER PROMPTLY.

MAXIMUM ALLOWABLE TOLERANCES HAVE BEEN DETERMINED AND DEVIATIONS WILL BE CAUSE FOR REJECTION. REMOVE ALL BURRS AND SHARP EDGES

RELEASED

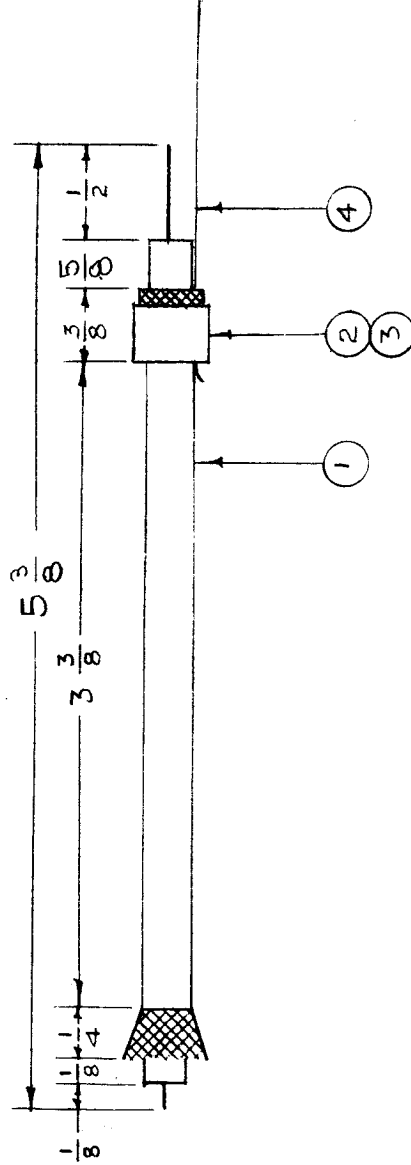
CA-143

A

REQ. PER UNIT

USED ON

MODEL	PROJECT NO.	ASSY. NO.	DATE
FFRD-5	104	A-325	12-30-52
FFRD-6	104	A-325	12-30-52
FFRD-7	104	A-325	12-30-52
FFRD-8	104	A-325	12-30-52
FFRD-1,2,3	E-458-P		4/6/56



REQ. ITEM	ITEM	PART NO.	DESCRIPTION	SYMBOL
2	4	WL-103-1	SHIELD, FLEXIBLE	
1	3	CU-101-2	FERRULE (OUTER)	
1	2	CU-101-1	FERRULE (INNER)	
53	1	R6-58/U	CABLE, COAXIAL	

THE TECHNICAL MATERIEL CORP.  
MAMARONECK, NEW YORK

CABLE ASSEMBLY

MATERIAL	WEIGHT PER PC.
TYPE & TEMPER	
HEAT TREAT. SPEC.	
FINISH & SPEC. NO.	

DATE	3/6/56	CN. NO.	1	DRAFTS	WAS	CHECKER	P.L.K.	ENG. APP.
ISSUE ITEM	CHANGED FROM		TOLERANCES					
DEC. DIM. ±		FRAC. DIM. ±		ANGULAR DIM. ±				DRILL, PUNCH, COMMERCIAL STOCK SIZES AND MANUFACTURERS TOLERANCES ARE NOT INCLUDED.

IF IT IS FOUND DESIRABLE TO CHANGE ANY TOLERANCE OR OTHER DETAIL SPECIFIED ON THIS DRAWING NOTIFY THE PURCHASER PROMPTLY.

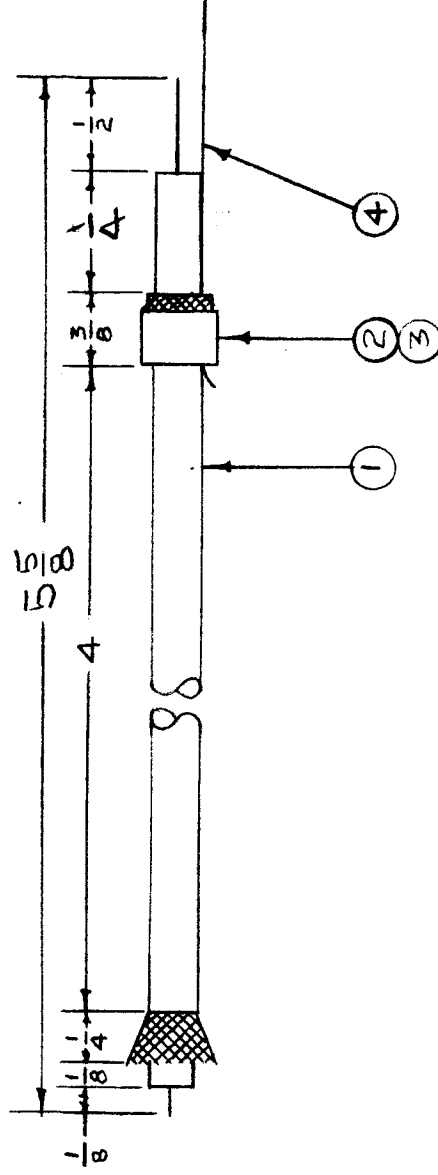
MAXIMUM ALLOWABLE TOLERANCES HAVE BEEN DETERMINED AND DEVIATIONS WILL BE CAUSE FOR REJECTION. REMOVE ALL BURRS AND SHARP EDGES

RELEASED

CA-144

A

REQ PER UNIT	MODEL	PROJECT NO.	ASSY. NO.	DATE
	FFRD-5	104	A-325	12-30-52
	FFRD-6	104	A-325	12-30-52
	FFRD-7	104	A-325	12-30-52
	FFRD-8	104	A-325	12-30-52
1	FFRD-1,2,3	E-458-P		4/16/56



REQ. ITEM	PART NO.	DESCRIPTION	SYMBOL
2"	4 WL-103-1	SHIELD, FLEXIBLE	
1	3 CU-101-2	FERRULE (OUTER)	
1	2 CU-101-1	FERRULE (INNER)	
5/8"	1 RG-58AU	CABLE, COAXIAL	

THE TECHNICAL MATERIEL CORP.	
MAMARONECK.	NEW YORK
CABLE ASSEMBLY	
STOCK SIZE	ff
MATERIAL	ff
WEIGHT PER PC.	ff
TYPE & TEMPER	ff
ELEC. DES. APP.	16 12-30-52
MECH. DES. APP.	PPH
CHECKED	AM 12/30/52
HEAT TREAT. SPEC.	ff
FINISH & SPEC. NO.	ff

A	2	5/8 WAS 6	3/4/52	1	COO	ANDER P.L.K.
ISSUE ITEM	CHANGED FROM	DATE	CN. NO.	DRAFTS	CHECKER	ENG. APP.
TOLERANCES						
SCALE						
DEC. DIM. ±						
FRAC. DIM. ±						
ANGULAR DIM. ±						
DRILL, PUNCH, COMMERCIAL STOCK SIZES AND MANUFACTURERS TOLERANCES ARE NOT INCLUDED.						

IF IT IS FOUND DESIRABLE TO CHANGE ANY TOLERANCE OR OTHER DETAIL SPECIFIED ON THIS DRAWING NOTIFY THE PURCHASER PROMPTLY.

MAXIMUM ALLOWABLE TOLERANCES HAVE BEEN DETERMINED AND DEVIATIONS WILL BE CAUSE FOR REJECTION. REMOVE ALL BURRS AND SHARP EDGES

RELEASED

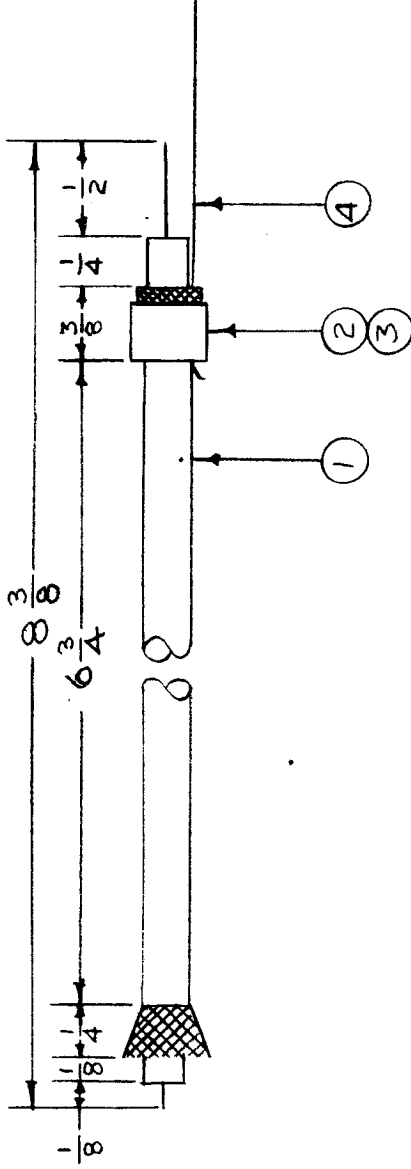
CA-145

B

REQ. PER UNIT

USED ON

MODEL	PROJECT NO.	ASSY. NO.	DATE
FFRD-5	104	A-325	12-30-52
FFRD-6	104	A-325	12-30-52
FFRD-7	104	A-325	12-30-52
FFRD-8	104	A-325	12-30-52
2 FFRD-1,2,3	E-458-P		4-16-56



REQ. ITEM	PART NO.	DESCRIPTION	SYMBOL
2" 4	WL-103-1	SHIELD, FLEXIBLE	
1	CU-101-2	FERRULE (OUTER)	
1	CU-101-1	FERRULE (INNER)	
8 3/8	RG-58/U	CABLE, COAXIAL	

THE TECHNICAL MATERIEL CORP. MAMARONECK, NEW YORK
CABLE ASSEMBLY
STOCK SIZE
MATERIAL
WEIGHT PER PC.
TYPE & TEMPER
HEAT TREAT. SPEC.
FINISH & SPEC. NO.

3	WAS 1 REQ UNIT	SUPERSEDES	7/25/56	2	JADE	PL.K.	A.J.J.
2	6 3/4 WAS 8						
1	8 3/8 WAS 9 5/8		7/9/53	1	GDP	JADE	P.M.

ISSUE ITEM	CHANGED FROM	DATE	CN. NO.	DRAFTS	CHECKER	ENG. APP.

SCALE	1" = 1"
TOLERANCES	
DEC. DIM. ±	
FRAC. DIM. ±	
ANGULAR DIM. ±	
DRILL, PUNCH, COMMERCIAL STOCK SIZES AND MANUFACTURERS TOLERANCES ARE NOT INCLUDED.	

DRAWN	12/31/52	ELEC. DES. APP.		MECH. DES. APP.	
CHECKED		FINAL APPROVAL			
SUPERSEDES					
CA-145					



IF IT IS FOUND DESIRABLE TO CHANGE ANY TOLERANCE OR OTHER DETAIL SPECIFIED ON THIS DRAWING NOTIFY THE PURCHASER PROMPTLY.

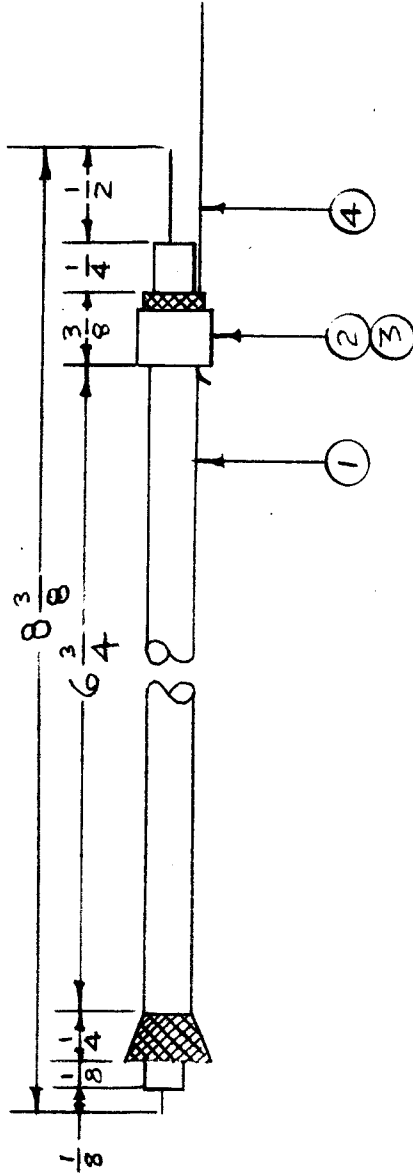
MAXIMUM ALLOWABLE TOLERANCES HAVE BEEN DETERMINED AND DEVIATIONS WILL BE CAUSE FOR REJECTION. REMOVE ALL BURRS AND SHARP EDGES

RELEASED

CA-146

A

REQ PER UNIT	USED ON			
	MODEL	PROJECT NO.	ASSY. NO.	DATE
	FFRD-5	104	A-325	12-30-52
	FFRD-6	104	A-325	12-30-52
	FFRD-7	104	A-325	12-30-52
	FFRD-8	104	A-325	12-30-52
1	FFRD-1,2,3	E-458-P		4/11/56



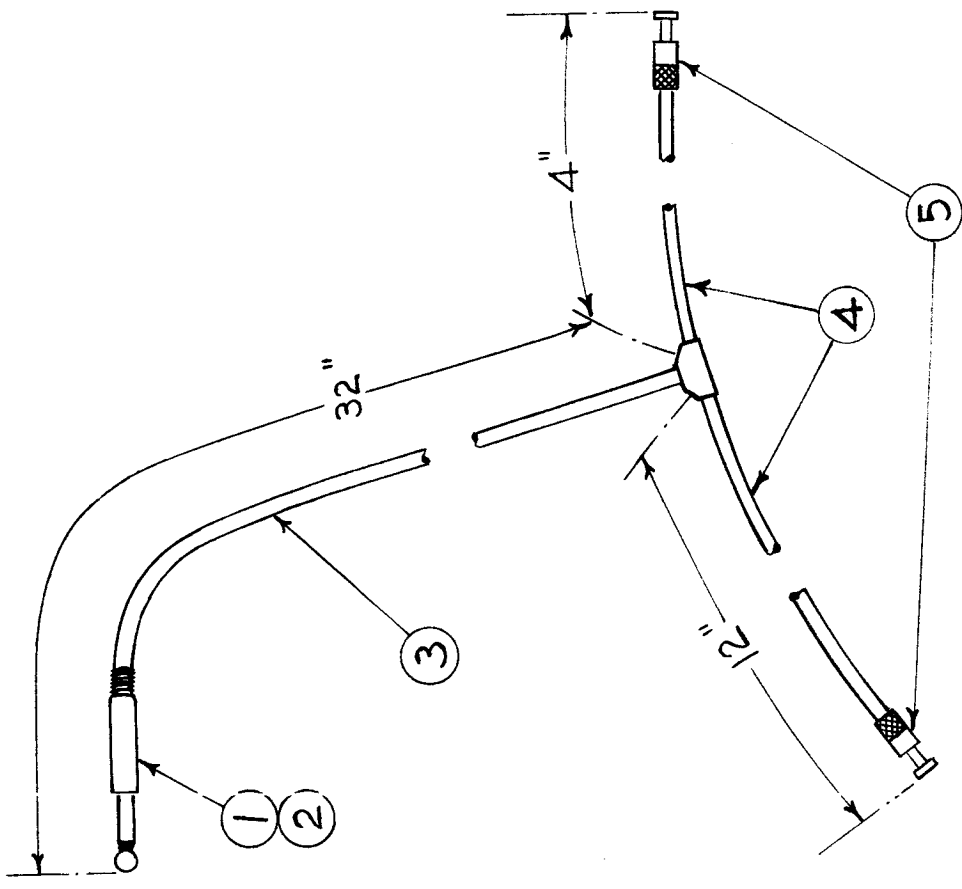
NOTE  
Superseded By  
CA-145  
4/25/56  
J. A. De

2"	4	WL-103-1	SHIELD, FLEXIBLE	
1	3	CU-101-2	FERRULE (OUTER)	
1	2	CU-101-1	FERRULE (INNER)	
8 3/8	1	RG-58/U	CABLE, COAXIAL	
REQ. ITEM		PART NO.	DESCRIPTION	SYMBOL
		STOCK SIZE	THE TECHNICAL MATERIEL CORP. MAMARONECK, NEW YORK	
		MATERIAL	CABLE ASSEMBLY	
		WEIGHT PER PC.		
		TYPE & TEMPER	DRAWN 16-12-30-52 MECH. DES. APP. P. M.	
		HEAT TREAT. SPEC.	CHECKED DATE 12/31/52 MECH. DES. APP.	
		FINISH & SPEC. NO.	FINAL APPROVAL CA-146 A	

A	2	6 3/4 WAS 7 1/2	5-19-53	1	C.D.D.	J. A. De	P. M.
1	1	8 3/8 WAS 9 1/8	5-19-53		DATE	CN. NO.	DRAFTS CHECKER/ENG. APP.
ISSUE ITEM		CHANGED FROM	SCALE				
		TOLERANCES	DRILL, PUNCH, COMMERCIAL STOCK SIZES AND MANUFACTURERS TOLERANCES ARE NOT INCLUDED.				
ALL OTHERS		DEC. DIM. ± FRAC. DIM. ± ANGULAR DIM. ±					

IF IT IS FOUND DESIRABLE TO CHANGE ANY TOLERANCE OR OTHER DETAIL SPECIFIED ON THIS DRAWING NOTIFY THE PURCHASER PROMPTLY.

MAXIMUM ALLOWABLE TOLERANCES HAVE BEEN DETERMINED AND DEVIATIONS WILL BE CAUSE FOR REJECTION. REMOVE ALL BURRS AND SHARP EDGES



CA-152

USED ON

PROJECT NO. ASSY. NO. DATE

30/5/55

REF: RCAF AF/AACX-206  
10EA/29525

REQ. ITEM	PART NO.	DESCRIPTION	SYMBOL
2	TE-123	TERMINAL, SOLDER	
16"	WI-115	CABLE, SINGLE COND.	
32"	WI-114-2	CABLE, TWO COND.	
2	TE-124	TERMINAL, CORD TIP	
1	PL-54	PLUG, TELEPHONE	
		TMC (Canada) LIMITED OTTAWA ONTARIO	
		CORD SET	
		HEAD PHONE	
		Z. Cheny	
		DRAWN	ELEC. DES. APP. MECH. DES. APP.
		CHECKED	FINAL APPROVAL
			CA-152

ISSUE ITEM	CHANGED FROM	DATE	CN. NO.	DRAFTS	CHECKER	ENG. APP.
TOLERANCES						
SCALE 1/4"						
DRILL, PUNCH, COMMERCIAL STOCK SIZES AND MANUFACTURERS TOLERANCES ARE NOT INCLUDED.						
ALL	DEC. DIM. ±					
OTHERS	FRAC. DIM. ±					
	ANGULAR DIM. ±					

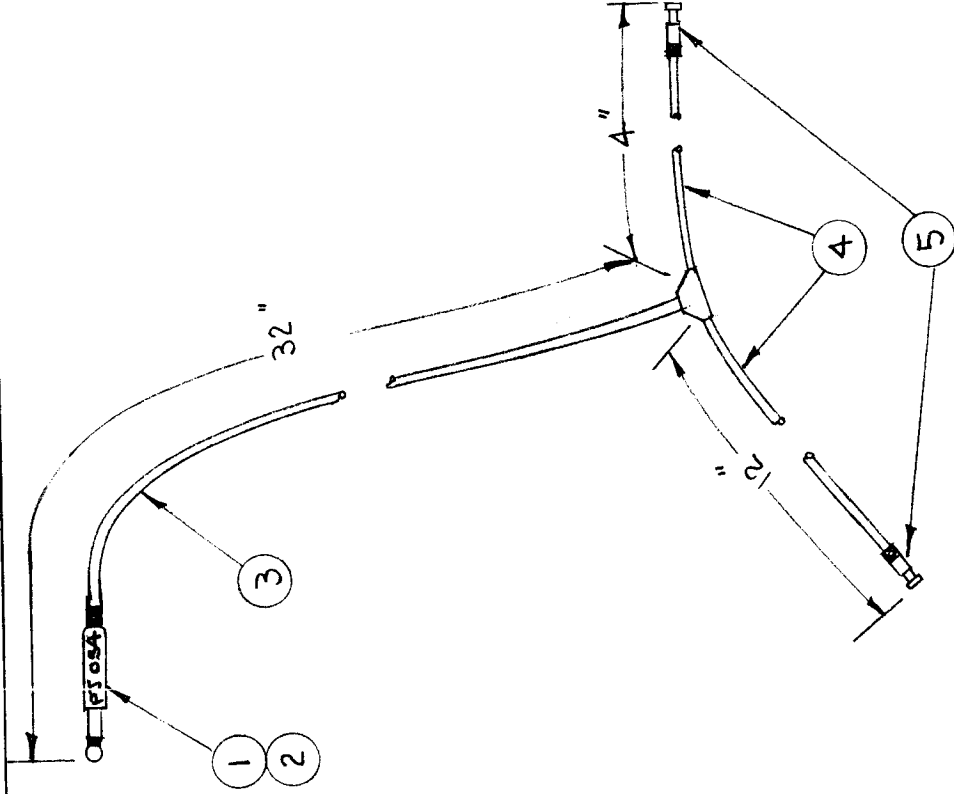
CA-152

USED ON

MODEL PROJECT NO. ASSY. NO. DATE

IF IT IS FOUND DESIRABLE TO CHANGE ANY TOLERANCE OR OTHER DETAIL SPECIFIED ON THIS DRAWING NOTIFY THE PURCHASER PROMPTLY.

MAXIMUM ALLOWABLE TOLERANCES HAVE BEEN DETERMINED AND DEVIATIONS WILL BE CAUSE FOR REJECTION. REMOVE ALL BURRS AND SHARP EDGES



2	5	TE-123	TERMINAL, SOLDER	SYMBOL
16"	4	WI-115	CABLE, SINGLE CONDUCTOR	
31"	3	WI-114-2	CABLE, TWO CONDUCTOR	
2	2	TE-124	TERMINAL, CORD TIP	
7	1	PS-05A	PLUG, TELEPHONE	
REQ. ITEM	PART NO.	DESCRIPTION	THE TECHNICAL MATERIEL CORP. MAMARONECK, NEW YORK	
STOCK SIZE			CORD SET	
MATERIAL	WEIGHT PER PC.	HEAD PHONE		
TYPE & TEMPER	DRAWN 2-12-53			
HEAT TREAT. SPEC.	CHECKED 2-13-53			
FINISH & SPEC. NO.	FINAL APPROVAL			

ISSUE ITEM	CHANGED FROM	DATE	CN. NO.	DRAFTS	CHECKER	ENG. APP.
A 1	PS-05A WAS PL-5A	1/15/54	CR-18	C.D.D.	J.A.R.	J.A.R.
TOLERANCES						
DEC. DIM. ±						
FRAC. DIM. ±						
ANGULAR DIM. ±						
DRILL, PUNCH, COMMERCIAL STOCK SIZES AND MANUFACTURERS TOLERANCES ARE NOT INCLUDED.						

CA-152

IF IT IS FOUND DESIRABLE TO CHANGE ANY TOLERANCE OR OTHER DETAIL SPECIFIED ON THIS DRAWING NOTIFY THE PURCHASER PROMPTLY.

MAXIMUM ALLOWABLE TOLERANCES HAVE BEEN DETERMINED AND DEVIATIONS WILL BE CAUSE FOR REJECTION. REMOVE ALL BURRS AND SHARP EDGES

CA-153

USED ON

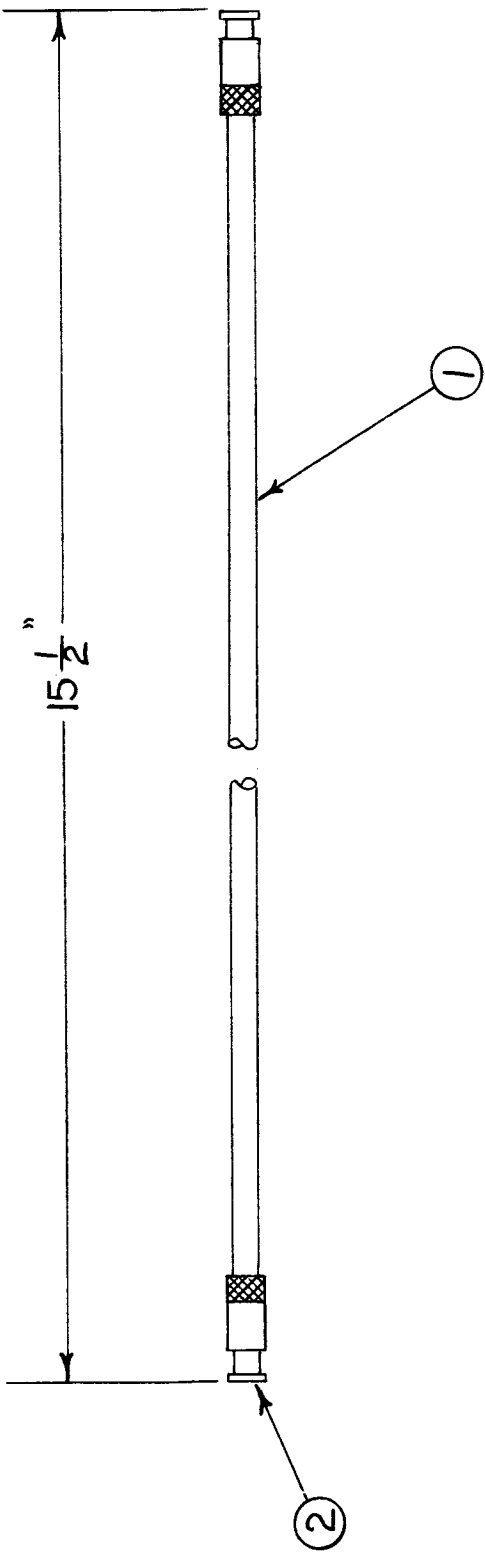
PROJECT NO.

MODEL

ASSY. NO.

DATE

30/5/55



REF: RCAF AF/AACX - 219  
10EA/29526

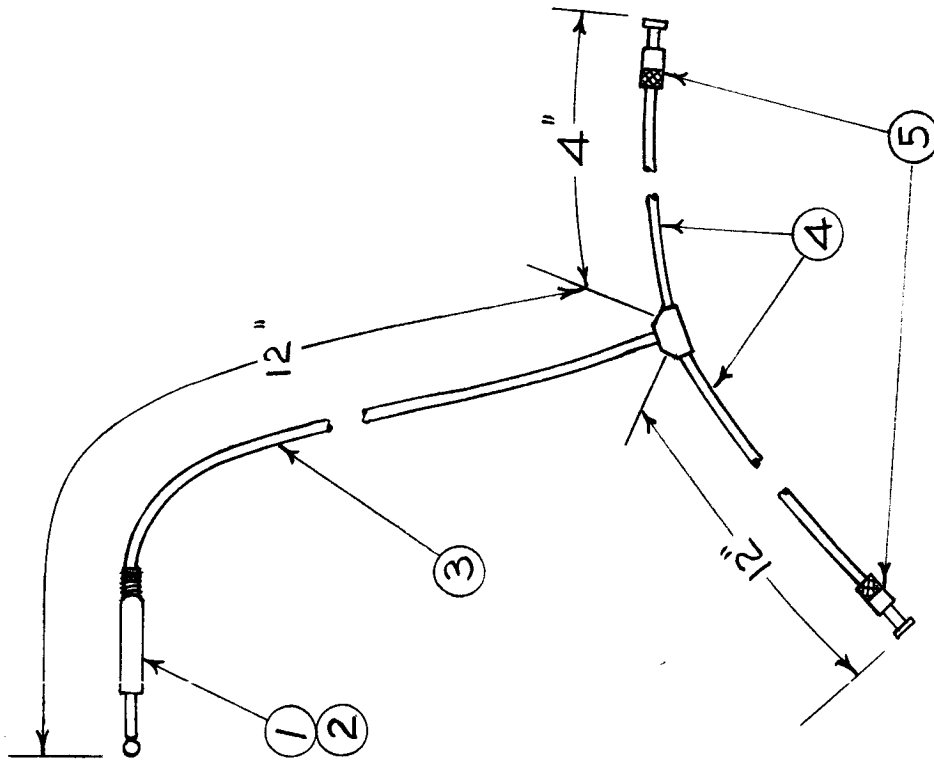
2	2	TE - 123	TERMINAL, SOLDER	SYMBOL
15 1/2	1	WI - 115	CABLE, SINGLE COND.	
REQ. ITEM	PART NO.		DESCRIPTION	
STOCK SIZE		TMC (Canada) LIMITED OTTAWA ONTARIO		
MATERIAL	WEIGHT PER PC.		CORDSET, HEADPHONE	
TYPE & TEMPER		E. Chey		
HEAT TREAT. SPEC.		ELEC. DES. APP.	MECH. DES. APP.	
FINISH & SPEC. NO.		CHECKED		
		FINAL APPROVAL		
		CA-153		

ISSUE	ITEM	CHANGED FROM	DATE	CN. NO.	DRAFTS	CHECKER	ENG. APP.
TOLERANCES							
SCALE							
ALL	DEC. DIM.	±					
OTHERS	FRAC. DIM.	±					
	ANGULAR DIM.	±					
DRILL, PUNCH, COMMERCIAL STOCK SIZES AND MANUFACTURERS TOLERANCES ARE NOT INCLUDED.							



IF IT IS FOUND DESIRABLE TO CHANGE ANY TOLERANCE OR OTHER DETAIL SPECIFIED ON THIS DRAWING NOTIFY THE PURCHASER PROMPTLY.

MAXIMUM ALLOWABLE TOLERANCES HAVE BEEN DETERMINED AND DEVIATIONS WILL BE CAUSE FOR REJECTION. REMOVE ALL BURRS AND SHARP EDGES



CA-162

USED ON

DATE

ASSY. NO.

PROJECT NO.

MODEL

30/5/55

**NOTICE TO PERSONS RECEIVING THIS DRAWING**

THE TECHNICAL MATERIEL CORPORATION claims proprietary right in the material disclosed herein. This drawing is issued in confidence for engineering information only and may not be reproduced or used to manufacture anything shown herein without permission from THE TECHNICAL MATERIEL CORPORATION to the user. This drawing is loaned for mutual assistance and is subject to recall at any time.

Property of:

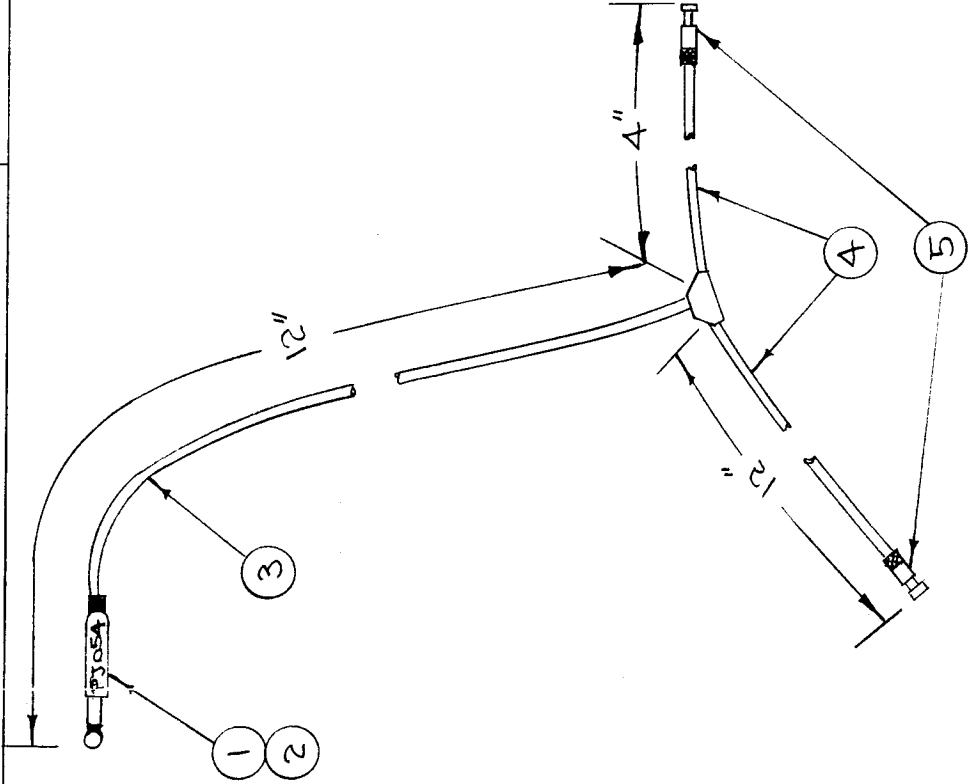
THE TECHNICAL MATERIEL CORPORATION  
MAMARONECK, NEW YORK

2	5	TE-123	TERMINAL, SOLDER	SYMBOL
16"	4	WI-115	CABLE, SINGLE COND.	
11"	3	WI-114-2	CABLE, TWO COND.	
2	2	TE-124	TERMINAL, CORD TIP	
1	1	PL-54	PLUG, TELEPHONE	
REQ. ITEM		PART NO.	DESCRIPTION	
			TMC(Canada)LIMITED	
			OTTAWA	ONTARIO
			CORD SET	
			HEAD PHONE	
			DRAWN	ELEC. DES. APP.
			MECH. DES. APP.	
			CHECKED	
			FINAL APPROVAL	
			CA-162	

ISSUE ITEM	CHANGED FROM	DATE	CN. NO.	DRAFTS	CHECKER	ENG. APP.
TOLERANCES						
DEC. DIM. ±	SCALE					
FRAC. DIM. ±	DRILL, PUNCH, COMMERCIAL STOCK					
ANGULAR DIM. ±	SIZES AND MANUFACTURERS					
TOLERANCES ARE NOT INCLUDED.						

IF IT IS FOUND DESIRABLE TO CHANGE ANY TOLERANCE OR OTHER DETAIL SPECIFIED ON THIS DRAWING NOTIFY THE PURCHASER PROMPTLY.

MAXIMUM ALLOWABLE TOLERANCES HAVE BEEN DETERMINED AND DEVIATIONS WILL BE CAUSE FOR REJECTION. REMOVE ALL BURRS AND SHARP EDGES



ISSUE	ITEM	CHANGED FROM	DATE	CN. NO.	DRAFTS	CHECKER	ENG. APP.
A	1	PJ054 WAS PJ-5A	1/25/54	CR18	WAS	WAS	WAS
TOLERANCES							
SCALE							

DEC. DIM. ±  
 FRAC. DIM. ±  
 OTHERS ANGULAR DIM. ±

DRILL, PUNCH, COMMERCIAL STOCK SIZES AND MANUFACTURERS TOLERANCES ARE NOT INCLUDED.

CA-162 A

USED ON

MODEL PROJECT NO. ASSY. NO. DATE

REQ. ITEM	PART NO.	DESCRIPTION	SYMBOL
2	TE-123	TERMINAL, SOLDER	
16"	WI-115	CABLE, SINGLE CONDUCTOR	
11"	WI-114-2	CABLE, TWO CONDUCTOR	
2	TE-124	TERMINAL, CORD TIP	
1	PJ-05A	PLUG, TELEPHONE	

THE TECHNICAL MATERIEL CORP.  
 MAMARONECK, NEW YORK

CORD SET

HEAD PHONE

C.D.D. S-G-53

DRAWN

CHECKED

ELEC. DES. APP.

MECH. DES. APP.

FINAL APPROVAL

CA-162 A

Not For Production

E A M

Copy Set  
Microphone for A-433

N/D

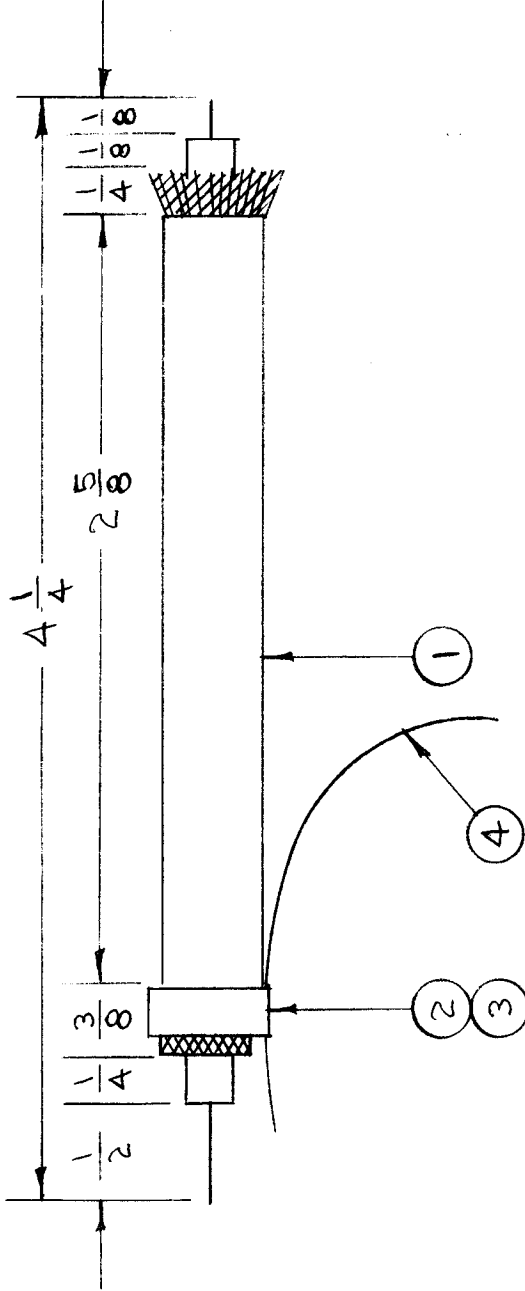
ISSUE ITEM		CHANGED FROM	DATE	CH. NO.	DRAFTS	CHECKER	ENG. APP.	REG. ITEM	PART NO.	DESCRIPTION	SYMBOL	
SCALE: MAXIMUM ALLOWABLE TOLERANCES HAVE BEEN DETERMINED AND ANY DEVIATIONS WILL BE CAUSE FOR REJECTION. REMOVE ALL BURRS AND SHARP EDGES										THE TECHNICAL MATERIEL CORP. MAMARONECK, NEW YORK		
TOLERANCES DEC. DIM. ± FRAC. DIM. ± ANGULAR DIM. ±												
TYPE & TEMPER HEATTREAT. SPEC.												
MATERIAL												
STOCK SIZE												
DRAWN												
CHECKED												
ELEC. DES. APP MECH. DES. APP												
FINISH & SPEC. NO.												CA-163
FINAL APPROVAL												

Copy Set, Microphone  
for A-433



IF IT IS FOUND DESIRABLE TO CHANGE ANY TOLERANCE OR OTHER DETAIL SPECIFIED ON THIS DRAWING NOTIFY THE PURCHASER PROMPTLY.

MAXIMUM ALLOWABLE TOLERANCES HAVE BEEN DETERMINED AND DEVIATIONS WILL BE CAUSE FOR REJECTION. REMOVE ALL BURRS AND SHARP EDGES



CA-165 C

USED ON  
 MODEL PROJECT NO. ASSY. NO. DATE  
 FFR 104 A-277 4-20-53

REQ. ITEM	PART NO.	DESCRIPTION	SYMBOL
2" 4	WL-103-1	SHIELD, FLEXIBLE	
1 3	CU-101-2	FERRULE, (OUTER)	
1 2	CU-101-1	FERRULE, (INNER)	
4/4" 1	RG 58/U	CABLE, COAXIAL	

THE TECHNICAL MATERIEL CORP.  
 MAMARONECK, NEW YORK

CABLE ASSY., R.F.

C.D.D. 4-20-53  
 DRAWN  
 CHECKED  
 ELEC. DES. APP. MECH. DES. APP.  
 FINAL APPROVAL

CA-165 C

ISSUE ITEM	CHANGED FROM	DATE	CN. NO.	DRAFTS	CHECKER	ENG. APP.
C 1	ITEM (A) RELOCATED	11-27-62	7712	WJ	WJ	
B 1	ITEM 1 WAS UG 58/U	9/28/61	5602	WJ	WJ	
A 1	4/4 WAS 4 1/2 2 5/8 WAS 2 7/8	7/13/53	1	C.D.D.	W.D.E.	

TOLERANCES

DEC. DIM. ±  
 FRAC. DIM. ±  
 OTHERS ANGULAR DIM. ±

SCALE

DRILL, PUNCH, COMMERCIAL STOCK SIZES AND MANUFACTURERS TOLERANCES ARE NOT INCLUDED.



**OBSCLETE**

OBSCLETE

IF IT IS FOUND DESIRABLE TO CHANGE ANY TOLERANCE OR OTHER DETAIL SPECIFIED ON THIS DRAWING NOTIFY THE PURCHASER PROMPTLY.

MAXIMUM ALLOWABLE TOLERANCES HAVE BEEN DETERMINED AND DEVIATIONS WILL BE CAUSE FOR REJECTION. REMOVE ALL BURRS AND SHARP EDGES

3/9/54

USED ON

PROJECT NO.

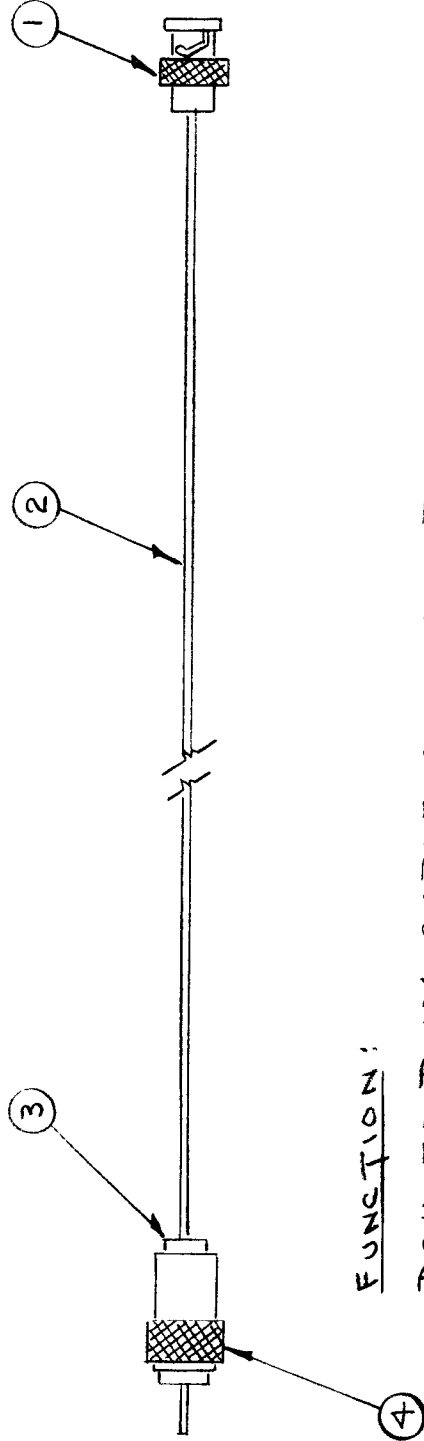
ASSY. NO.

DATE

DDR-2

5/19/53

LENGTH OVERALL 13"



FUNCTION:

DCU TO DVM CABLE CONNECTOR

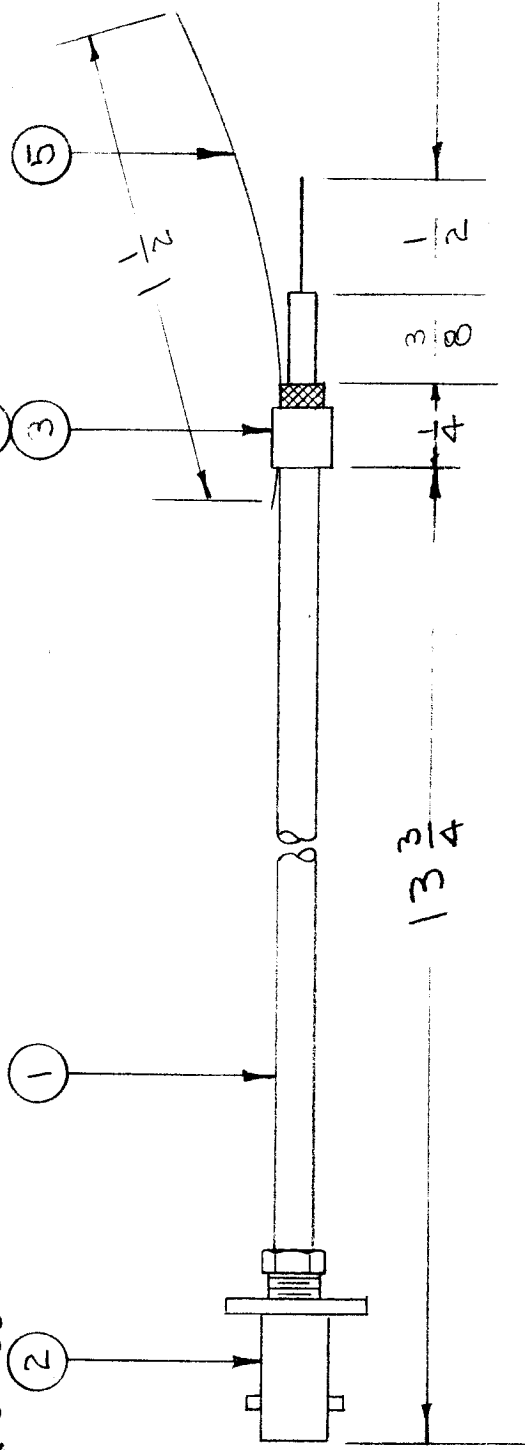
1	4	PL-259	PLUG		
1	3	UG-176/U	ADAPTER		
12"	2	RG-59/U	CABLE		
1	1	UG-260/U	PLUG		
REQ. ITEM		PART NO.	DESCRIPTION		SYMBOL
STOCK SIZE		THE TECHNICAL MATERIEL CORP. MAMARONECK, NEW YORK			
MATERIAL		CABLE ASSEMBLY			
TYPE & TEMPER		DRAWN: JAO, CDB			
HEAT TREAT. SPEC.		CHECKED: SUPAREDES			
FINISH & SPEC. NO.		AEM045			
ELEC. DES. APP.		MECH. DES. APP.			
FINAL APPROVAL		CA-169			

ISSUE	ITEM	CHANGED FROM	DATE	CN. NO.	DRAFTS/CHECKER	ENG. APP.
TOLERANCES						
ALL	DEC. DIM.	±	DRILL, PUNCH, COMMERCIAL STOCK			
OTHERS	FRAC. DIM.	±	SIZES AND MANUFACTURERS			
	ANGULAR DIM.	±	TOLERANCES ARE NOT INCLUDED.			

IF IT IS FOUND DESIRABLE TO CHANGE ANY TOLERANCE OR OTHER DETAIL SPECIFIED ON THIS DRAWING NOTIFY THE PURCHASER PROMPTLY.

MAXIMUM ALLOWABLE TOLERANCES HAVE BEEN DETERMINED AND DEVIATIONS WILL BE CAUSE FOR REJECTION. REMOVE ALL BURRS AND SHARP EDGES

INSTALL PER S-166



CA-170 A

USED ON

DATE

ASSY. NO.

PROJECT NO.

MODEL

A-154 S-28-53

140

DMK-4

REQ. ITEM	PART NO.	DESCRIPTION	SYMBOL
1/2"	5 WL-103-1	SHIELD, FLEXIBLE	
1	4 CU-101-4	FERRULE (OUTER)	
1	3 CU-101-3	FERRULE (INNER)	
1	2 UG-262/U	CONNECTOR, RF	
1 3/8	1 RG 59/U	CABLE	

THE TECHNICAL MATERIEL CORP.  
MAMARONECK, NEW YORK

CABLE ASSEMBLY

R.F.

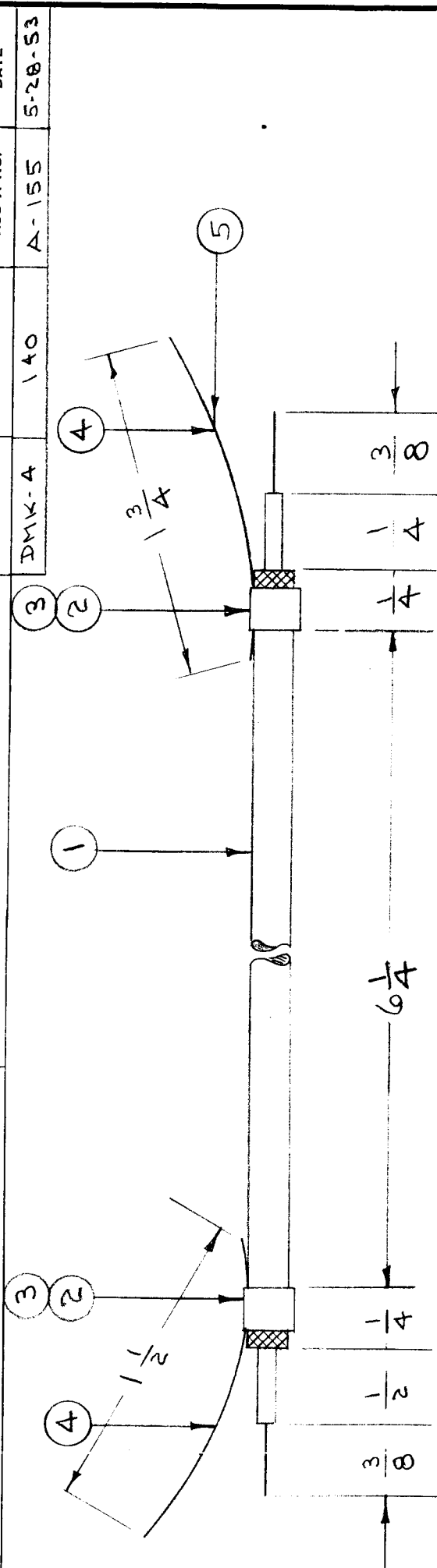
STOCK SIZE	#	ELEC. DES. APP.	MECH. DES. APP.
MATERIAL	#	DRAWN	CHECKED
WEIGHT PER PC.	#	DATE	FINAL APPROVAL
TYPE & TEMPER	#	C.D.D. S-28-53	
HEAT TREAT. SPEC.	#	APR 1954	
FINISH & SPEC. NO.	#		CA-170 A

ISSUE ITEM	CHANGED FROM	DATE	CN. NO.	DRAFTS CHECKER	ENG. APP.
A 1	1 3/4 WAS 1A	4/8/54	1	JAB	C.D.D.
TOLERANCES					
DEC. DIM. ±					
FRAC. DIM. ±					
OTHERS ANGULAR DIM. ±					
DRILL, PUNCH, COMMERCIAL STOCK SIZES AND MANUFACTURERS TOLERANCES ARE NOT INCLUDED.					



IF IT IS FOUND DESIRABLE TO CHANGE ANY TOLERANCE OR OTHER DETAIL SPECIFIED ON THIS DRAWING NOTIFY THE PURCHASER PROMPTLY.

MAXIMUM ALLOWABLE TOLERANCES HAVE BEEN DETERMINED AND DEVIATIONS WILL BE CAUSE FOR REJECTION. REMOVE ALL BURRS AND SHARP EDGES



USED ON

MODEL	PROJECT NO.	ASSY. NO.	DATE
DMK-4	140	A-155	5-28-53

CA-172 B

REQ. ITEM	PART NO.	DESCRIPTION	SYMBOL
1/4"	PX-10A-1-085	INSULATION, SLEEVING (BLK.)	
3/4"	WL-103-1	SHIELD, FLEXIBLE	
2	CU-101-4	FERRULE (OUTER)	
2	CU-101-3	FERRULE (INNER)	
8/4"	RG 59/U	CABLE	

THE TECHNICAL MATERIEL CORP.  
MAMARONECK, NEW YORK

SWITCH CABLE ASSY

IFO

C.D.D. 5/28/53

DRAWN: *A.P.P.* ELEC. DES. APP.  
CHECKED: *[Signature]* MECH. DES. APP.  
FINAL APPROVAL: *[Signature]*

ISSUE	ITEM	CHANGED FROM	DATE	CN. NO.	DRAFTS	CHECKER	ENG. APP.
B	2	6/4 WAS 63/4	4/8/54	2	JAD	[Signature]	[Signature]
A	1	IFO ADDED	3/15/54	1	JAD	[Signature]	[Signature]

SCALE: 1" = 1"

TOLERANCES

DEC. DIM. ±  
FRAC. DIM. ±  
OTHERS ANGULAR DIM. ±

DRILL, PUNCH, COMMERCIAL STOCK SIZES AND MANUFACTURERS TOLERANCES ARE NOT INCLUDED.

IF IT IS FOUND DESIRABLE TO CHANGE ANY TOLERANCE OR OTHER DETAIL SPECIFIED ON THIS DRAWING NOTIFY THE PURCHASER PROMPTLY.

MAXIMUM ALLOWABLE TOLERANCES HAVE BEEN DETERMINED AND DEVIATIONS WILL BE CAUSE FOR REJECTION. REMOVE ALL BURRS AND SHARP EDGES

RELEASED

CA-173

USED ON

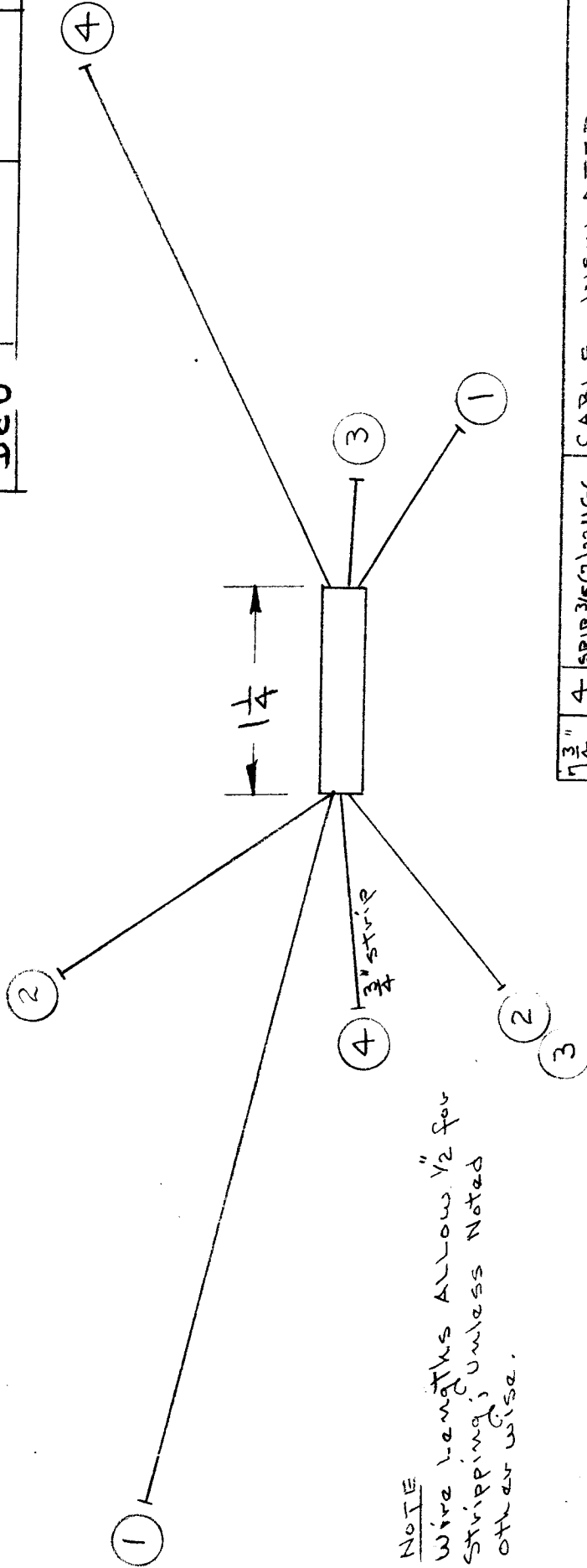
MODEL PROJECT NO. ASSY. NO. DATE

DCU

PROJECT NO.

ASSY. NO.

6-17-53



NOTE  
Wire lengths Allow  $\frac{1}{2}$  for Stripping, unless Noted other wise.

REQ.	ITEM	PART NO.	DESCRIPTION	SYMBOL
1	3/4"	4	SRIR-3/5(7)-22096	CABLE - INSULATED
2	3/4"	3	SRIR-3/5(7)-22096	CABLE - INSULATED
3	3/4"	2	SRIR-3/5(7)-22096	CABLE - INSULATED
4	3/4"	1	SRIR-3/5(7)-22096	CABLE - INSULATED

THE TECHNICAL MATERIEL CORP. MAMARONECK, NEW YORK	
SMALL CABLE	
STOCK SIZE	
MATERIAL	
TYPE & TEMPER	
HEAT TREAT. SPEC.	
FINISH & SPEC. NO.	

ISSUE ITEM	CHANGED FROM	DATE	CN. NO.	DRAFTS	CHECKER	ENG. APP.
TOLERANCES						
SCALE						
DRILL, PUNCH, COMMERCIAL STOCK SIZES AND MANUFACTURERS TOLERANCES ARE NOT INCLUDED.						

MECH. DES. APP.	
ELEC. DES. APP.	
CHECKED	
FINAL APPROVAL	







IF IT IS FOUND DESIRABLE TO CHANGE ANY TOLERANCE OR OTHER DETAIL SPECIFIED ON THIS DRAWING NOTIFY THE PURCHASER PROMPTLY.

MAXIMUM ALLOWABLE TOLERANCES HAVE BEEN DETERMINED AND DEVIATIONS WILL BE CAUSE FOR REJECTION. REMOVE ALL BURRS AND SHARP EDGES

CA-180

USED ON

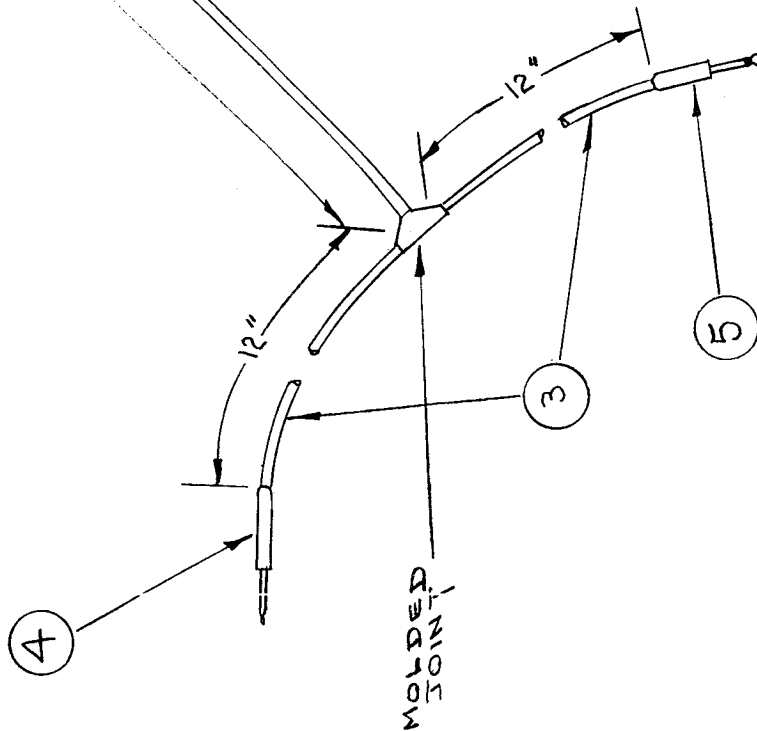
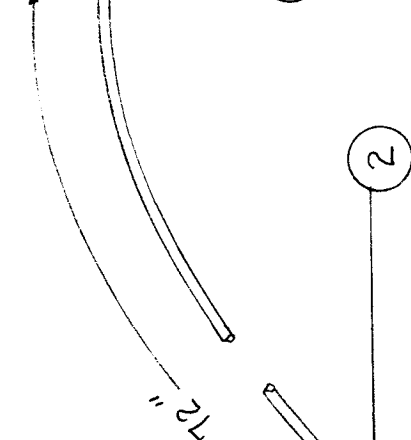
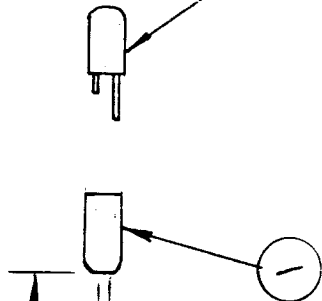
DATE

ASS'Y. NO.

PROJECT NO.

MODEL

MATING PART  
U-75/U



REQ. ITEM	ITEM	PART NO.	DESCRIPTION	SYMBOL
X	6	BS-100	SOLDER, SOFT	
1	5	PJ-055B	PLUG, TELEPHONE	
1	4	PJ-068	PLUG, TELEPHONE	
24"	3	WI-114-2	CABLE, TWO CONDUCTOR	
72"	2	WI-114-4	CABLE, FOUR CONDUCTOR	
1	1	U-61/U	JACK, TELEPHONE	

THE TECHNICAL MATERIEL CORP.  
MAMARONECK, NEW YORK

CORDSET INTERCONNECTING  
W/O SWITCH

DRAWN: *JAD* 1-13-54  
ELEC. DES. APP. *WDC*  
MECH. DES. APP.

CHECKED: *JAD*

TYPE & TEMPER

HEAT TREAT. SPEC.

FINISH & SPEC. NO.

FINAL APPROVAL

CA-180

ISSUE ITEM

CHANGED FROM

DATE

CN. NO.

DRAFTS

CHECKER

ENG. APP.

SCALE

TOLERANCES

DEC. DIM. ±

FRAC. DIM. ±

ANGULAR DIM. ±

DRILL, PUNCH, COMMERCIAL STOCK SIZES AND MANUFACTURERS TOLERANCES ARE NOT INCLUDED.

FORM - 108

IF IT IS FOUND DESIRABLE TO CHANGE ANY TOLERANCE OR OTHER DETAIL SPECIFIED ON THIS DRAWING NOTIFY THE PURCHASER PROMPTLY.

MAXIMUM ALLOWABLE TOLERANCES HAVE BEEN DETERMINED AND DEVIATIONS WILL BE CAUSE FOR REJECTION. REMOVE ALL BURRS AND SHARP EDGES

CA-181

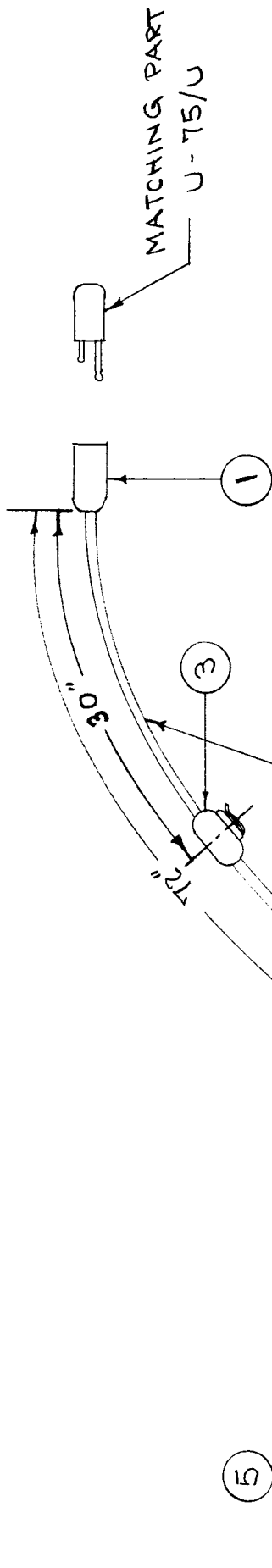
USED ON

DATE

ASS'Y. NO.

PROJECT NO.

MODEL



REQ. ITEM	PART NO.	DESCRIPTION	SYMBOL
X 6	BS-100	SOLDER, SOFT	
1 5	PJ-068	PLUG, TELEPHONE	
1 4	PJ-055B	" "	
1 3	SN-1A2	SWITCH, MOMENTARY CONTACT	
B'D	WI-11A-B	CABLE, 5 CONDUCTOR	
1 1	U-61/U	JACK, TELEPHONE, 2 CIRCUIT	

THE TECHNICAL MATERIEL CORP.  
MAMARONECK, NEW YORK

CORDSET, INTERCONNECTING  
W/SWITCH

TYPE & TEMPER: D.D. 1-13-54  
DRAWN: [Signature]  
CHECKED: [Signature]

HEAT TREAT. SPEC.  
FINISH & SPEC. NO. CA-181

ELEC. DES. APP. [Signature]  
MECH. DES. APP.

MOULDED JOINT

DRILL, PUNCH, COMMERCIAL STOCK SIZES AND MANUFACTURERS TOLERANCES ARE NOT INCLUDED.

ISSUE ITEM: CHANGED FROM: DATE: CN. NO. DRAFTS: CHECKER: ENG. APP.

TOLERANCES: SCALE: ±

DEC. DIM. ±  
FRAC. DIM. ±  
ANGULAR DIM. ±

FORM - 108

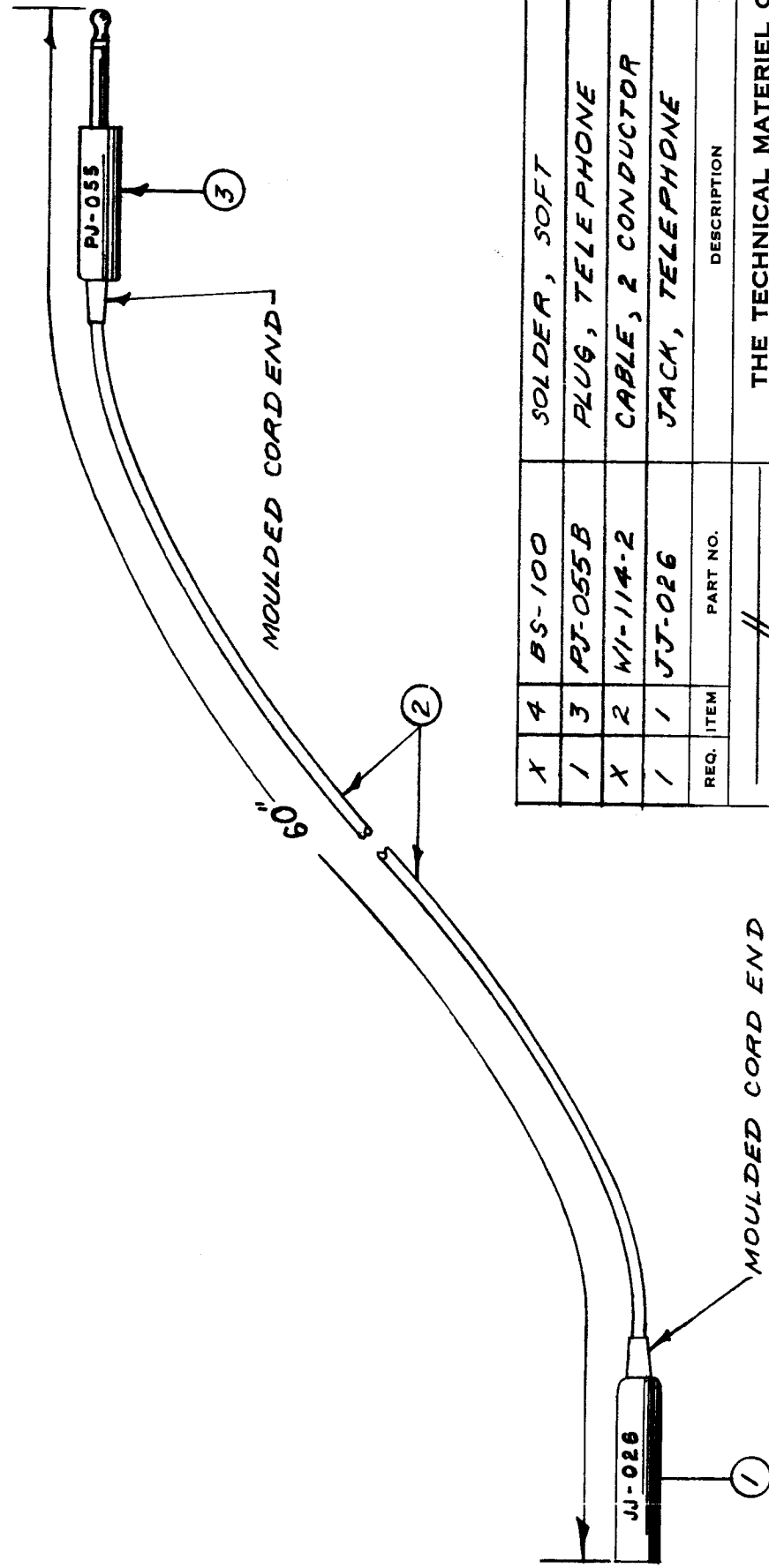
IF IT IS FOUND DESIRABLE TO CHANGE ANY TOLERANCE OR OTHER DETAIL SPECIFIED ON THIS DRAWING NOTIFY THE PURCHASER PROMPTLY.

MAXIMUM ALLOWABLE TOLERANCES HAVE BEEN DETERMINED AND DEVIATIONS WILL BE CAUSE FOR REJECTION. REMOVE ALL BURRS AND SHARP EDGES

CA-182

USED ON

MODEL PROJECT NO. ASSY. NO. DATE



REQ. ITEM	PART NO.	DESCRIPTION	SYMBOL
X 4	BS-100	SOLDER, SOFT	
1	PJ-055B	PLUG, TELEPHONE	
X 2	WI-114-2	CABLE, 2 CONDUCTOR	
1	JJ-026	JACK, TELEPHONE	
		THE TECHNICAL MATERIEL CORP. MAMARONECK, NEW YORK	
		CORDSET, EXTENSION	
		STOCK SIZE	
		MATERIAL	
		WEIGHT PER PC.	
		TYPE & TEMPER	
		HEAT TREAT. SPEC.	
		FINISH & SPEC. NO.	

ISSUE ITEM	CHANGED FROM	DATE	CN. NO.	DRAFTS	CHECKER	ENG. APP.
TOLERANCES						
SCALE						
DRILL, PUNCH, COMMERCIAL STOCK SIZES AND MANUFACTURERS TOLERANCES ARE NOT INCLUDED.						
ALL DEC. DIM. ±						
OTHERS FRAC. DIM. ±						
ANGULAR DIM. ±						
ELEC. DES. APP.						MECH. DES. APP.
DRAWN						CHECKED
5-1-25-54						u/c
FINAL APPROVAL						CA-182

