

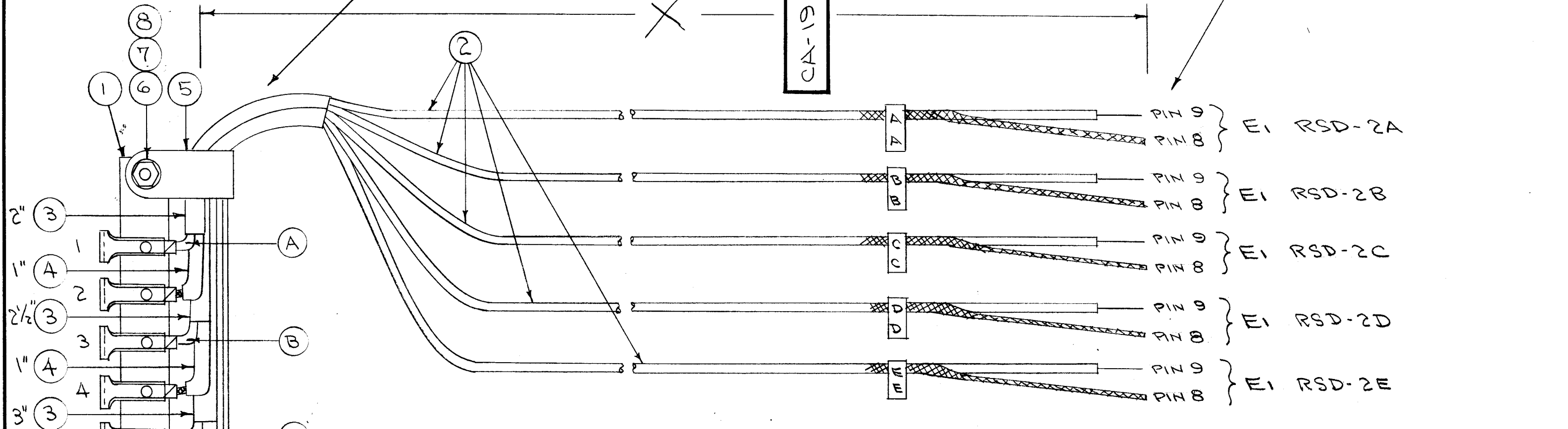
IF IT IS FOUND DESIRABLE TO CHANGE ANY TOLERANCE OR OTHER DETAIL SPECIFIED ON THIS DRAWING NOTIFY THE PURCHASER PROMPTLY.

MAXIMUM ALLOWABLE TOLERANCES HAVE BEEN DETERMINED AND DEVIATIONS WILL BE CAUSE FOR REJECTION. REMOVE ALL BURRS AND SHARP EDGES

BREAK CONDUCTOR OUT 2" FROM END. CUT OFF 1/2" OF CONDUCTOR. STRIP 1/2" AND TIN.

CA-198

BREAK CONDUCTOR OUT 2" FROM END. STRIP 1/2" AND TIN. ALSO TIN 1/2" OF SHIELD.



X DIMENSIONS AS SHOWN ABOVE (INCHES) ACCORDING TO CUSTOMER'S SPECS. CUT LENGTH (IN INCHES)

SYSTEM	A	B	C	D	E	A	B	C	D	E
1	48	66	180	162	144	50 3/4	69 1/4	183 3/4	166 1/4	148 3/4

CABLE DESIGNATION TO BE IN FOLLOWING FORM.

CA-198-1
SYMBOL NUMBER SYSTEM

X	10	BS-100	SOLDER, SOFT	
5	9	A-B-C-D-E	SPEEDY TABS	
1	8	NTH0632BCB	NUT, HEX	
1	7	LWE06MRC	WASHER, LOCK	
1	6	9CBS0632BCY	SCREW, MACHINE	
1	5	CU-102-5	CLAMP, "G" TYPE	
5"	4	PX-100-1-.085	INSULATION, SLEEVING	
15"	3	PX-100-1-.118	" " " "	
X	2	WI-101-4	CABLE, SHIELDED	
1	1	TM-105-10-AL	STRIP, FANNING	

REQ. ITEM	PART NO.	DESCRIPTION	SYMBOL
#		THE TECHNICAL MATERIEL CORP. MAMARONECK. NEW YORK	
#		CABLE, INTERCONNECT (RSA-RSD) RCR SYSTEM	
#		CDD. 12-14-54	PLK. 12-16-54
#		DRAWN	ELEC. DES. APP. MECH. DES. APP.
#		HEAT TREAT. SPEC.	FINAL APPROVAL
#		CHECKED	CA-198 A
#		FINISH & SPEC. NO.	

ISSUE	ITEM	CHANGED FROM	DATE	CN. NO.	DRAFTS	CHECKER	ENG. APP.
A	1	COMPLETE REVISION	7/14/54	1	CDD	FAO	AMB

TOLERANCES: ALL OTHERS DEC. DIM. ±, FRAC. DIM. ±, ANGULAR DIM. ±

SCALE: DRILL, PUNCH, COMMERCIAL STOCK SIZES AND MANUFACTURERS TOLERANCES ARE NOT INCLUDED.

REQ. PER UNIT: MODEL, PROJECT NO., ASSY. NO., DATE, USED ON