

IF IT IS FOUND DESIRABLE TO CHANGE ANY TOLERANCE OR OTHER DETAIL SPECIFIED ON THIS DRAWING NOTIFY THE PURCHASER PROMPTLY.

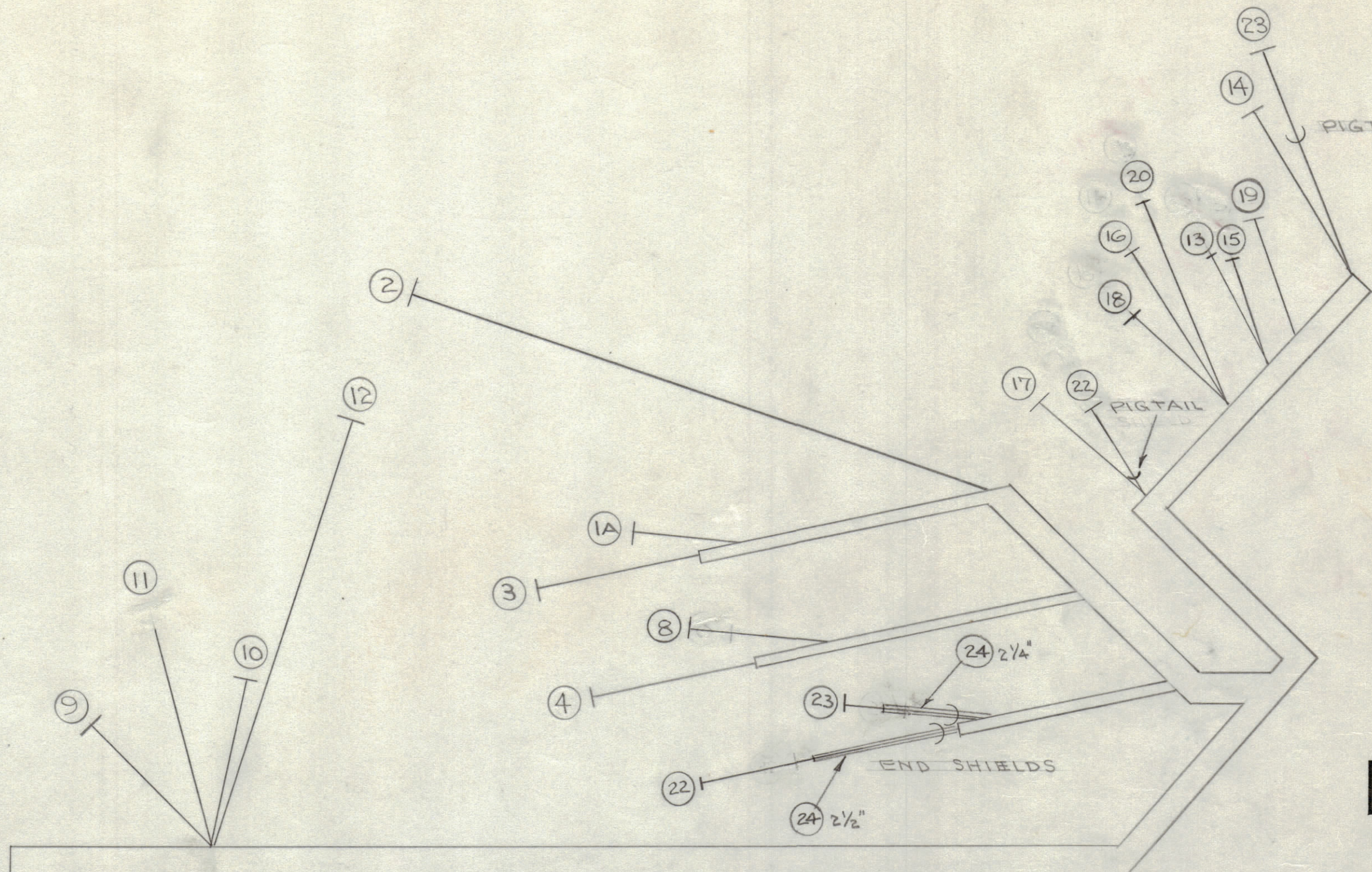
MAXIMUM ALLOWABLE TOLERANCES HAVE BEEN DETERMINED AND DEVIATIONS WILL BE CAUSE FOR REJECTION. REMOVE ALL BURRS AND SHARP EDGES

**NOTICE TO PERSONS RECEIVING THIS DRAWING**

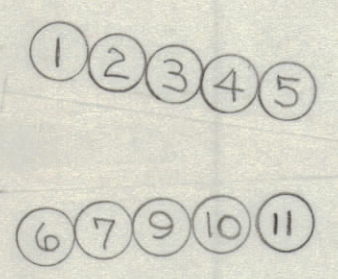
THE TECHNICAL MATERIEL CORPORATION claims proprietary right in the material disclosed hereon. This drawing is issued in confidence for engineering information only and may not be reproduced or used to manufacture anything shown hereon without permission from THE TECHNICAL MATERIEL CORPORATION to the user. This drawing is loaned for mutual assistance and is subject to recall at any time.

Property of:  
**THE TECHNICAL MATERIEL CORPORATION**  
 MAMARONECK, NEW YORK

NOTE: 1. ALL WIRE LENGTHS ALLOW 3/4" EACH END FOR STRIPPING.  
2. USE WI-101-4 (19 1/4") FOR ITEMS 22 & 23



CA-189 D



X	25	CD-100-1	CORD LACING, NYLON	
4 3/4"	24	PX-10A-1-133	INSULATION, SLEEVING	
12 1/2"	23	SRIR 3/5(1) 22U 55	CABLE, INSULATED, STRANDED	11 1/4"
10"	22	SRIR 3/5(1) 22U 95	"	8"
19 1/4"	21	WI-101-4	SHIELD, FOR ITEMS 22 & 23	
12 7/8"	20	SRIR 3/5(1) 22U 44	CABLE, INSULATED, STRANDED	
13 1/4"	19	SRIR 3/5(1) 22U 94	"	
12 3/4"	18	SRIR 3/5(1) 22U 96	"	
12 3/8"	17	SRIR 3/5(1) 22U 77	"	
15"	16	SRIR 3/5(1) 22U 55	"	
15 3/8"	15	SRIR 3/5(1) 22U 95	"	
18"	14	SRIR 3/5(1) 22U 66	"	
17 1/4"	13	SRIR 3/5(1) 22U 66	"	
9 3/8"	12	SRIR 1(1) 20U 22	"	
12 1/2"	11	SRIR 3/5(1) 22U 55	"	
11"	10	SRIR 3/5(1) 22U 11	"	
11 1/4"	9	SRIR 3/5(1) 22U 00	"	
19 3/4"	8	SRIR 3/5(1) 22U BLUE	"	
13"	7	SRIR 3/5(1) 22U BLUE	"	
14 3/4"	6	SRIR 3/5(1) 22U 66	"	
15 3/4"	5	SRIR 3/5(1) 22U 77	"	
25 3/4"	4	SRIR 3/5(1) 22U 44	"	
26 1/2"	3	SRIR 3/5(1) 22U 33	"	
28 1/4"	2	SRIR 3/5(1) 22U 55	"	
17"	1	SRIR 3/5(1) 22U 96	CABLE, INSULATED STRANDED	

16 5/8"	1A	SRIR 3/5(1) 22U 96	CABLE, INSULATED, STRANDED	
REQ. ITEM	PART NO.		DESCRIPTION	SYMBOL

D	1	WI-101-4 WAS WI-101-1	3/14/53	4	P.B.	END	W.D.
C	1	ITEM 11 WAS SRIR 3/5(1) 22U 95 NOTE #2 ADDED ITEM 21 WAS WI-103-1	2/2/54	3	16	J.H.D.	G.T.O.
B	2	ITEM 11 WAS 20G.	8/20/53	2	C.D.D.	J.H.D.	G.T.O.
A	1	WIRE LENGTHS CHGD.					
	1	REDRAWN W/CHANGES	8/4/53	1	C.D.D.	J.H.D.	G.T.O.
ISSUE	ITEM	CHANGED FROM	DATE	CN. NO.	DRAFTS	CHECKER	ENG. APP.

TOLERANCES		SCALE: 1"
ALL OTHERS	DEC. DIM. ± FRAC. DIM. ± ANGULAR DIM. ±	DRILL, PUNCH, COMMERCIAL STOCK SIZES AND MANUFACTURERS TOLERANCES ARE NOT INCLUDED.

DVM	199	8-4-53
MODEL	PROJECT NO.	ASSY. NO.
USED ON		

THE TECHNICAL MATERIEL CORP. MAMARONECK, NEW YORK	
CABLE ASSEMBLY, SCOPE	
CD.D 8/4/53	G.T.O.
DRAWN	ELEC. DES. APP.
	MECH. DES. APP.
CHECKED	FINAL APPROVAL
	CA-189 D