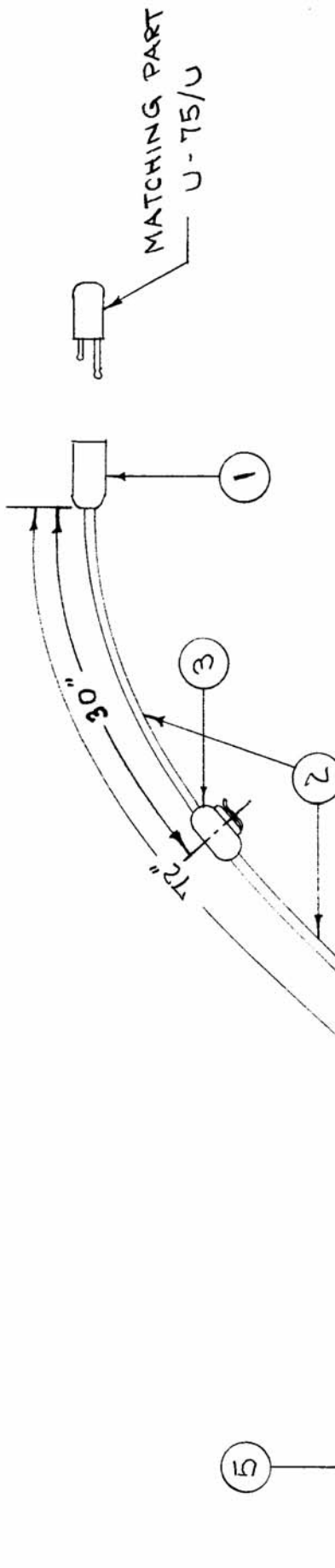


IF IT IS FOUND DESIRABLE TO CHANGE ANY TOLERANCE OR OTHER DETAIL SPECIFIED ON THIS DRAWING NOTIFY THE PURCHASER PROMPTLY.

MAXIMUM ALLOWABLE TOLERANCES HAVE BEEN DETERMINED AND DEVIATIONS WILL BE CAUSE FOR REJECTION. REMOVE ALL BURRS AND SHARP EDGES



REQ. ITEM	6	BS-100	SOLDER, SOFT	DESCRIPTION	SYMBOL
	5	PJ-068	PLUG, TELEPHONE		
	4	PJ-055B	" "		
	3	SW-1A2	SWITCH, MOMENTARY CONTACT		
	2	WI-114-5	CABLE, 5 CONDUCTOR		
	1	U-61/U	JACK, TELEPHONE, 2 CIRCUIT		
PART NO.			THE TECHNICAL MATERIEL CORP.		
STOCK SIZE			MAMARONECK, NEW YORK		
MATERIAL			CORDSET, INTERCONNECTING		
WEIGHT PER PC.			W/ SWITCH		
TYPE & TEMPER			C.D.D. 1-13-SA		
HEAT TREAT. SPEC.			DRAWN		
FINISH & SPEC. NO.			ELEC. DES. APP.		
			MECH. DES. APP.		

ISSUE ITEM	CHANGED FROM	DATE	CN. NO.	DRAFTS CHECKER	ENG. APP.
TOLERANCES					
SCALE					
DEC. DIM. ±					
FRAC. DIM. ±					
ANGULAR DIM. ±					
DRILL, PUNCH, COMMERCIAL STOCK SIZES AND MANUFACTURERS TOLERANCES ARE NOT INCLUDED.					
FINAL APPROVAL					CA-181

CA-181

USED ON
PROJECT NO.
ASS'Y. NO.
DATE

MODEL