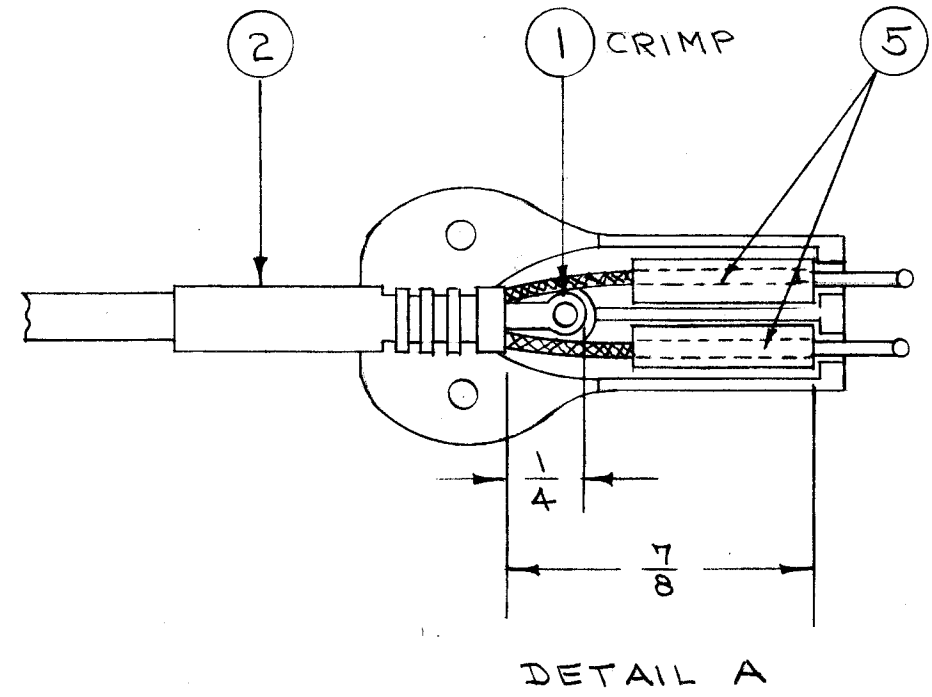
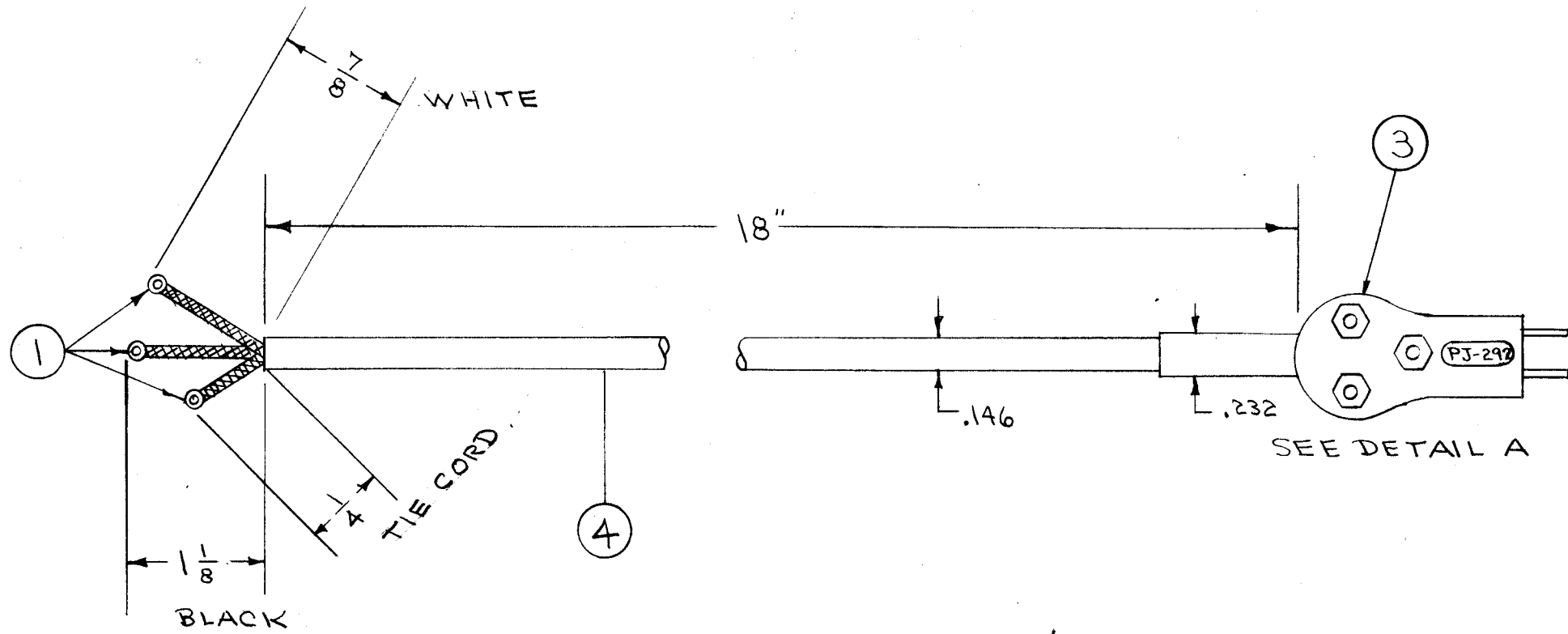


IF IT IS FOUND DESIRABLE TO CHANGE ANY TOLERANCE OR OTHER DETAIL SPECIFIED ON THIS DRAWING NOTIFY THE PURCHASER PROMPTLY.

MAXIMUM ALLOWABLE TOLERANCES HAVE BEEN DETERMINED AND DEVIATIONS WILL BE CAUSE FOR REJECTION. REMOVE ALL BURRS AND SHARP EDGES

CA-141 A



NOTE: CRIMP ITEMS 4 AND 5 TO ITEM 1 AND SWEAT.

NOTICE TO PERSONS RECEIVING THIS DRAWING

THE TECHNICAL MATERIEL CORPORATION claims proprietary right in the material disclosed hereon. This drawing is issued in confidence for engineering information only and may not be reproduced or used to manufacture anything shown hereon without permission from THE TECHNICAL MATERIEL CORPORATION to the user. This drawing is loaned for mutual assistance and is subject to recall at any time.

Property of:
THE TECHNICAL MATERIEL CORPORATION
MAMARONECK, NEW YORK

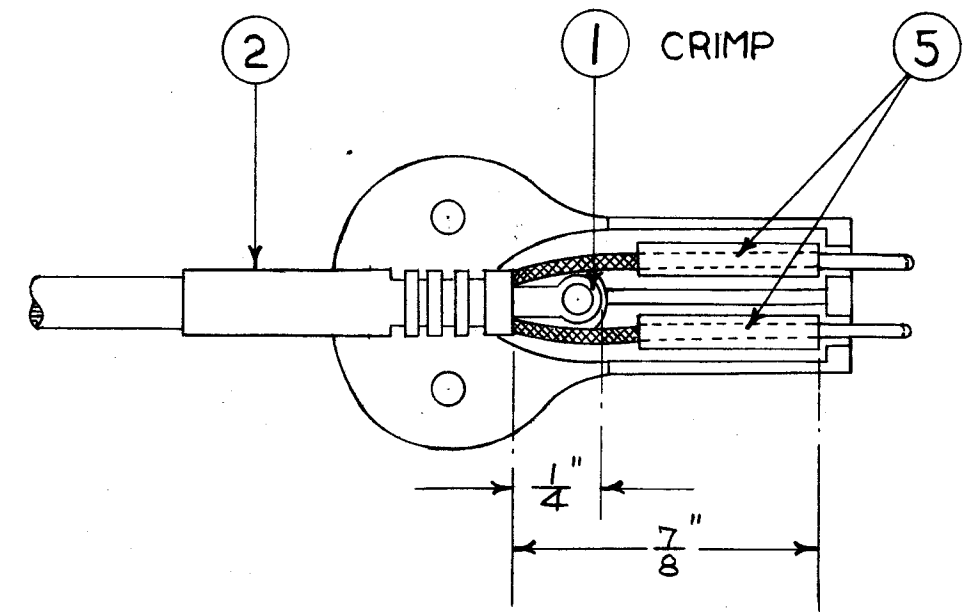
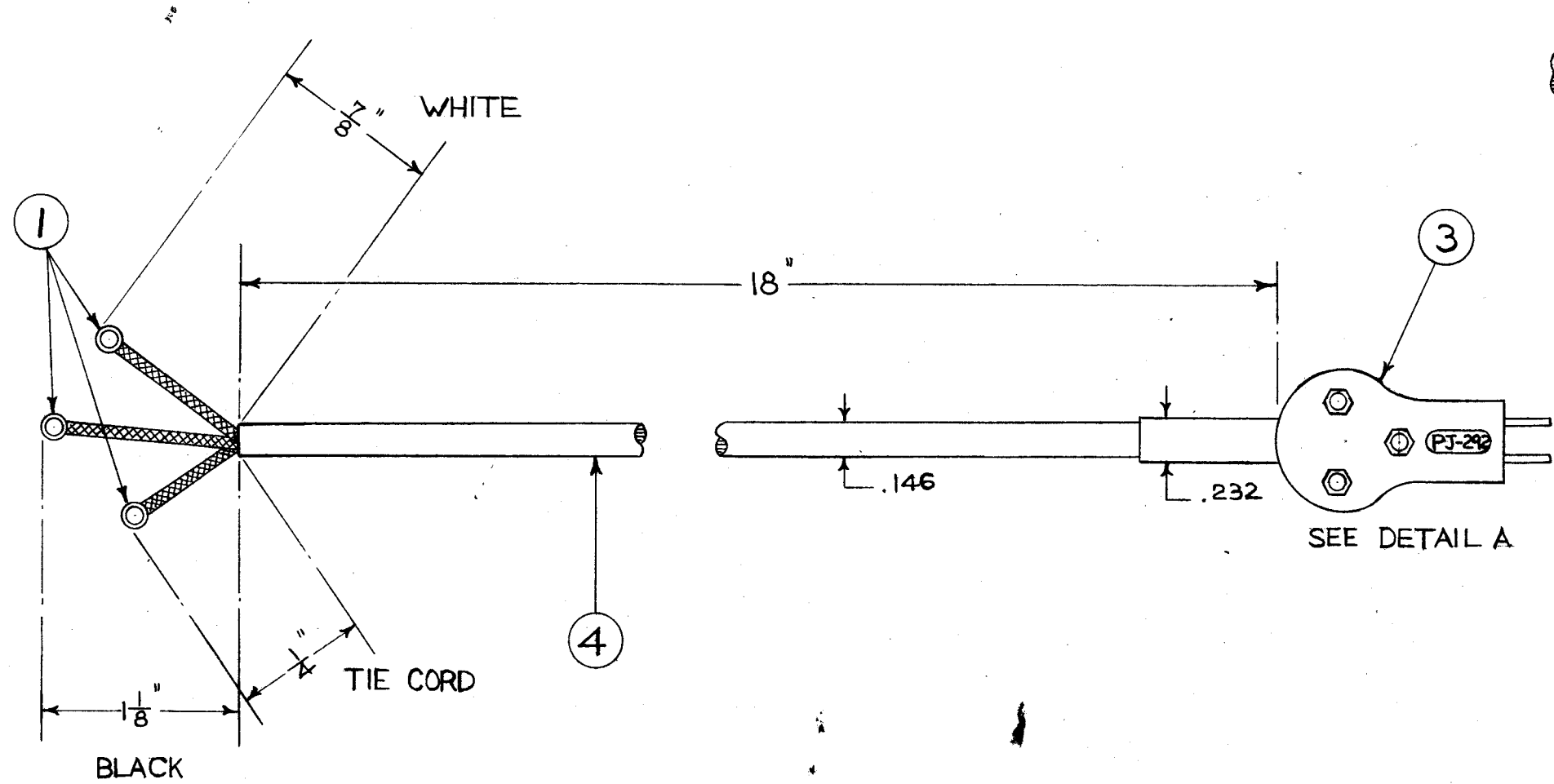
X	5	BS-100	SOLDER, SOFT	
20 ³ / ₈	4	WI-114-2	CABLE, 2 CONDUCTOR	
1	3	PJ-292	PLUG, W/CONNECTORS & HDWE.	
1"	2	RY-104	INSULATION, SLEEVING	
4	1	TE-125	TERMINAL, CORD CRIMP	
REQ.	ITEM	PART NO.	DESCRIPTION	SYMBOL
//			THE TECHNICAL MATERIEL CORP.	
STOCK SIZE			MAMARONECK. NEW YORK	
//			CORD SET	
MATERIAL		WEIGHT PER PC.		
//				
TYPE & TEMPER			C.D.D.A-9-53	
//			DRAWN	
HEAT TREAT. SPEC.			ELEC. DES. APP.	
//			MECH. DES. APP.	
FINISH & SPEC. NO.			CHECKED	
			FINAL APPROVAL	
			CA-141 A	

A	1	TERMINALS CHANGED DIMENSIONS + DETAIL ADDED	4/9/53	1	C.D.D.	W.D.	W.D.
ISSUE	ITEM	CHANGED FROM	DATE	CN. NO.	DRAFTS	CHECKER	ENG. APP.
TOLERANCES		SCALE:					
ALL OTHERS		DRILL, PUNCH, COMMERCIAL STOCK SIZES AND MANUFACTURERS TOLERANCES ARE NOT INCLUDED.					
DEC. DIM. ±		MODEL					
FRAC. DIM. ±		PROJECT NO.					
ANGULAR DIM. ±		ASS'Y. NO.					
		DATE					
		USED ON					

IF IT IS FOUND DESIRABLE TO CHANGE ANY TOLERANCE OR OTHER DETAIL SPECIFIED ON THIS DRAWING NOTIFY THE PURCHASER PROMPTLY.

MAXIMUM ALLOWABLE TOLERANCES HAVE BEEN DETERMINED AND DEVIATIONS WILL BE CAUSE FOR REJECTION. REMOVE ALL BURRS AND SHARP EDGES

CA-141 A



DETAIL A

SEE DETAIL A

NOTE: CRIMP ITEM 4 AND 5 TO ITEM 1 AND SWEAT.
REF: RCAF A/AACX-205
IOEA/29524

X	5	BS-100	SOLDER, SOFT
20 ³ / ₈	4	WI-114-2	CABLE, 2 CONDUCTOR
1	3	PJ-292	PLUG, CONNECTORS + HDWE
1	2	RY-104	INSULATION, SLEEVING
4	1	TE-125	TERMINAL, CORD TIP

REQ.	ITEM	PART NO.	DESCRIPTION	SYMBOL
— # —			TMC (Canada) LIMITED OTTAWA ONTARIO	
STOCK SIZE				
— # —			CORD SET	
MATERIAL				
— # —			E. Chang	
TYPE & TEMPER			DRAWN	MECH. DES. APP.
— # —			31/5/55	
HEAT TREAT. SPEC.			CHECKED	FINAL APPROVAL
— # —			CA-141	
FINISH & SPEC. NO.				

A	1	TERMINALS CHANGED DIMENSIONS + DETAIL ADDED	4/9/53	1			
ISSUE	ITEM	CHANGED FROM	DATE	CN. NO.	DRAFTS	CHECKER	ENG. APP.
TOLERANCES			SCALE:				
ALL OTHERS	DEC. DIM. ± FRAC. DIM. ± ANGULAR DIM. ±		DRILL, PUNCH, COMMERCIAL STOCK SIZES AND MANUFACTURERS TOLERANCES ARE NOT INCLUDED.				

MODEL	PROJECT NO.	ASS'Y. NO.	DATE
USED ON			