

IF IT IS FOUND DESIRABLE TO CHANGE ANY TOLERANCE OR OTHER DETAIL SPECIFIED ON THIS DRAWING NOTIFY THE PURCHASER PROMPTLY.

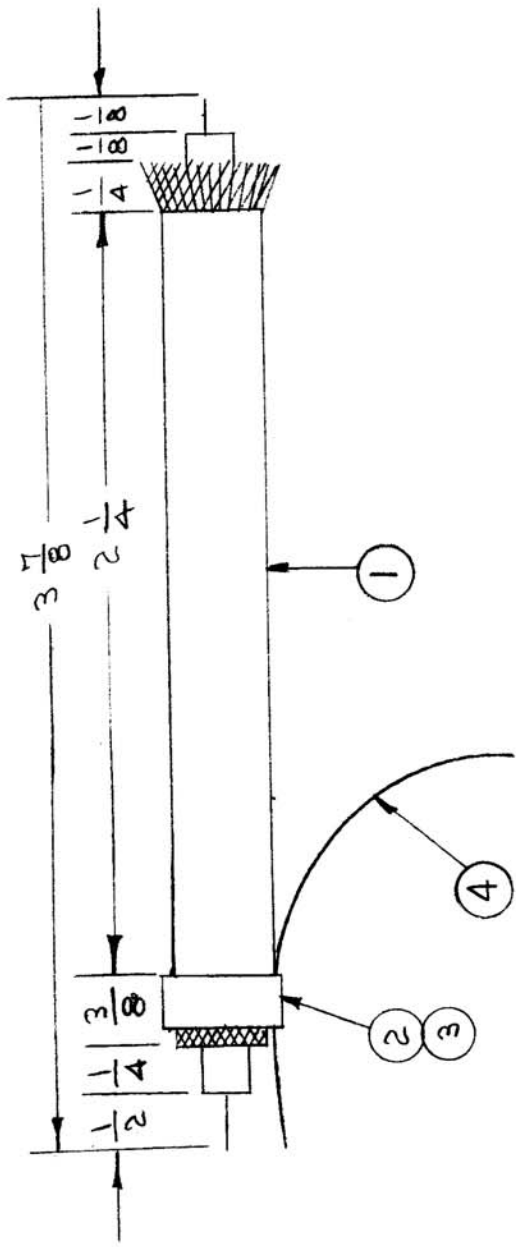
MAXIMUM ALLOWABLE TOLERANCES HAVE BEEN DETERMINED AND DEVIATIONS WILL BE CAUSE FOR REJECTION. REMOVE ALL BURRS AND SHARP EDGES

**RELEASED**

CA-140 B

USED ON

MODEL	PROJECT NO.	ASSY. NO.	DATE
FFR	104	A-277	12-8-54



REQ.	ITEM	PART NO.	DESCRIPTION	SYMBOL
2"	4	WL-103-1	SHIELD, FLEXIBLE	
1	3	CU-101-2	FERRULE (OUTER)	
1	2	CU-101-1	FERRULE (INNER)	
3 7/8	1	RG 58/U	CABLE, COAXIAL	

THE TECHNICAL MATERIEL CORP.  
MAMARONECK, NEW YORK  
CABLE ASSY., R.F.

STOCK SIZE	#	—
MATERIAL	#	—
TYPE & TEMPER	#	—
HEAT TREAT. SPEC.	#	—
FINISH & SPEC. NO.	#	—

B 1	ITEM (4) RELOCATED	11-27-62	7712	CSG	J.W.
A 2	2 1/4 WAS 1 1/8	4/20/53	1	C.D.D.	J.W.
A 1	3 7/8 WAS 3 1/2				J.W.
ISSUE ITEM	CHANGED FROM	DATE	CN. NO.	DRAFTS CHECKER	ENG. APP.
TOLERANCES		SCALE #			

DEC. DIM. ±  
FRAC. DIM. ±  
ANGULAR DIM. ±

DRILL, PUNCH, COMMERCIAL STOCK SIZES AND MANUFACTURERS TOLERANCES ARE NOT INCLUDED.

FINAL APPROVAL	CA-140	B
CHECKED		
DRAWN	G.T.O	
ELEC. DES. APP.		
MECH. DES. APP.		