

IF IT IS FOUND DESIRABLE TO CHANGE ANY TOLERANCE OR OTHER DETAIL SPECIFIED ON THIS DRAWING NOTIFY THE PURCHASER PROMPTLY.

MAXIMUM ALLOWABLE TOLERANCES HAVE BEEN DETERMINED AND DEVIATIONS WILL BE CAUSE FOR REJECTION. REMOVE ALL BURRS AND SHARP EDGES

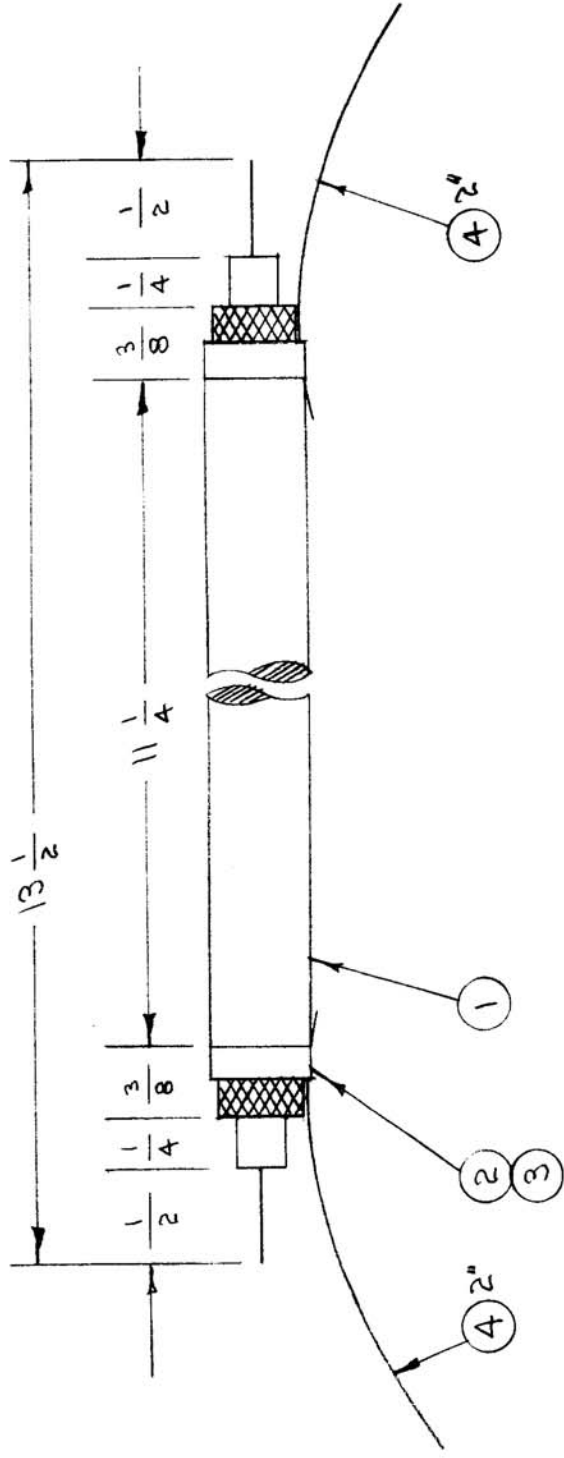
RELEASED

CA-136

A

USED ON

MODEL	PROJECT NO.	ASS'Y. NO.	DATE
FFR	104	A-263	11-28-54



REQ. ITEM	4	WL-103-1	SHIELD, FLEXIBLE	DESCRIPTION	SYMBOL
	2	CU-101-2	FERRULE (OUTER)		
	2	CU-101-1	FERRULE (INNER)		
	1 1/2"	RG 58/U	CABLE, RF		
PART NO.			THE TECHNICAL MATERIEL CORP.		
STOCK SIZE			MAMARONECK, NEW YORK		
MATERIAL			RF CABLE ASSY.		
TYPE & TEMPER			C.D.D. 11-28-54		
HEAT TREAT. SPEC.			DRAWN G.T.O.		
FINISH & SPEC. NO.			ELEC. DES. APP. MECH. DES. APP.		
			CHECKED 12/3/52		
			FINAL APPROVAL		
			CA-136		
			A		

ISSUE ITEM	A 1	ITEM 2 ADDED	11-28-54	1	C.D.D.	RF
		CHANGED FROM	DATE	CN. NO.	DRAFTS CHECKER	ENG. APP.
TOLERANCES						
DEC. DIM. ±						
FRAC. DIM. ±						
OTHERS ANGULAR DIM. ±						
DRILL, PUNCH, COMMERCIAL STOCK SIZES AND MANUFACTURERS TOLERANCES ARE NOT INCLUDED.						