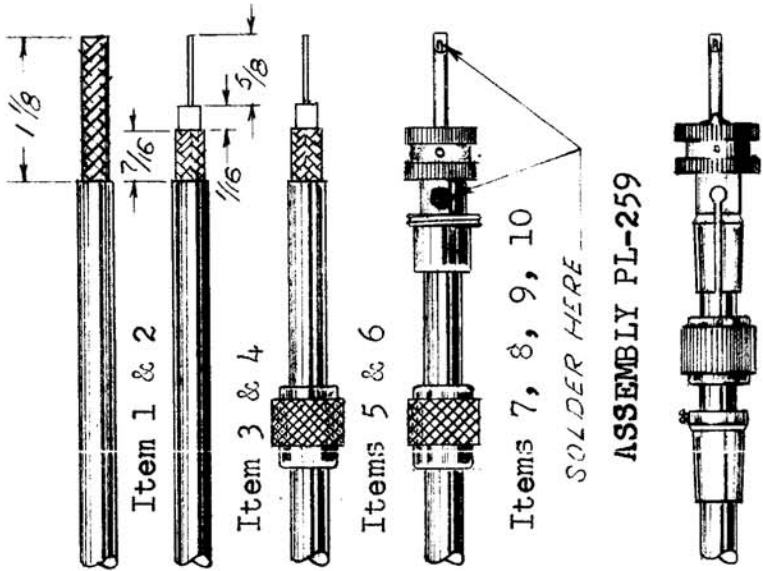


IF IT IS FOUND DESIRABLE TO CHANGE ANY TOLERANCE OR OTHER DETAIL SPECIFIED ON THIS DRAWING NOTIFY THE PURCHASER PROMPTLY.

MAXIMUM ALLOWABLE TOLERANCES HAVE BEEN DETERMINED AND DEVIATIONS WILL BE CAUSE FOR REJECTION. REMOVE ALL BURRS AND SHARP EDGES



ASSEMBLY PL-259

ASSEMBLY PL-259-A

ASSEMBLY DRAWING OF RG8/U & RG8A/U CABLE TO PL259 & PL259-A CONNECTOR.

1. Cut cable square.
2. Remove 1 1/8" of vinyl jacket.
3. Trim braid to 7/16" long.
4. Bare 5/8" of inner conductor.
5. Slide coupling ring on cable.
6. Tin centre conductor
7. Screw plug assembly on to cable.
8. Solder braid to shell.
9. Solder centre conductor to contact.
10. Screw coupling ring to plug.

C-2

USED ON

MODEL	PROJECT NO.	ASSY. NO.	DATE
			20 FEB 1961

REQ. ITEM	PART NO.	DESCRIPTION	SYMBOL
		TMC (Canada) LIMITED OTTAWA	
		TMC (CANADA) LIMITED	
		CABLE ASSEMBLY. PRODUCTION FOR INTERNAL CIRCULATION ONLY	
		WHDAVISON	
		DRAWN	ELEC. DES. APP.
		CHECKED	MECH. DES. APP.
			FINAL APPROVAL
			C-2

ISSUE	ITEM	CHANGED FROM	DATE	CN. NO.	DRAFTS	CHECKER	ENG. APP.
TOLERANCES							
SCALE N.T.S.							
DIMENSIONS IN INCHES UNLESS OTHERWISE SPECIFIED							
DRILL. PUNCH. COMMERCIAL STOCK SIZES AND MANUFACTURERS TOLERANCES ARE NOT INCLUDED.							
ALL OTHERS	DEC. DIM. ± FRAC. DIM. ± ANGULAR DIM. ±						