

UNLESS OTHERWISE SPECIFIED:
1~ ALL ENGRAVING TO BE 3/16
HIGH GOTHIC WHITE FILLED.
2~ ALL LETTER GROUPS TO BE CENTERED
ON HOLES OR CUTOUTS.

HEIGHT OF LETTER	3/16	.010	.026
HEIGHT OF DEPTH OF STROKE	1/8	.010	.020
WIDTH OF STROKE			

NOTES

THE CONTENTS OF THIS DRAWING ARE THE EXCLUSIVE PROPERTY OF THE TECHNICAL MATERIEL CORP. ITS UNAUTHORIZED USE OR REPRODUCTION IN WHOLE OR IN PART IS STRICTLY FORBIDDEN.

DECIMALS
X ± .05
XX ± .01
XXX ± .005

UNLESS OTHERWISE SPECIFIED
DIMENSIONS ARE IN INCHES AND INCLUDE
CHEMICALLY APPLIED OR PLATED FINISHES

FRACTIONS
± 1/64

TOLERANCES
± .005

MECH. DES. DATE 3/1/64

ELECT. DES. DATE 3/1/64

CHECKED DATE 3/1/64

DRAWN DATE 3/1/64

FINAL APPROVAL DATE 3/1/64

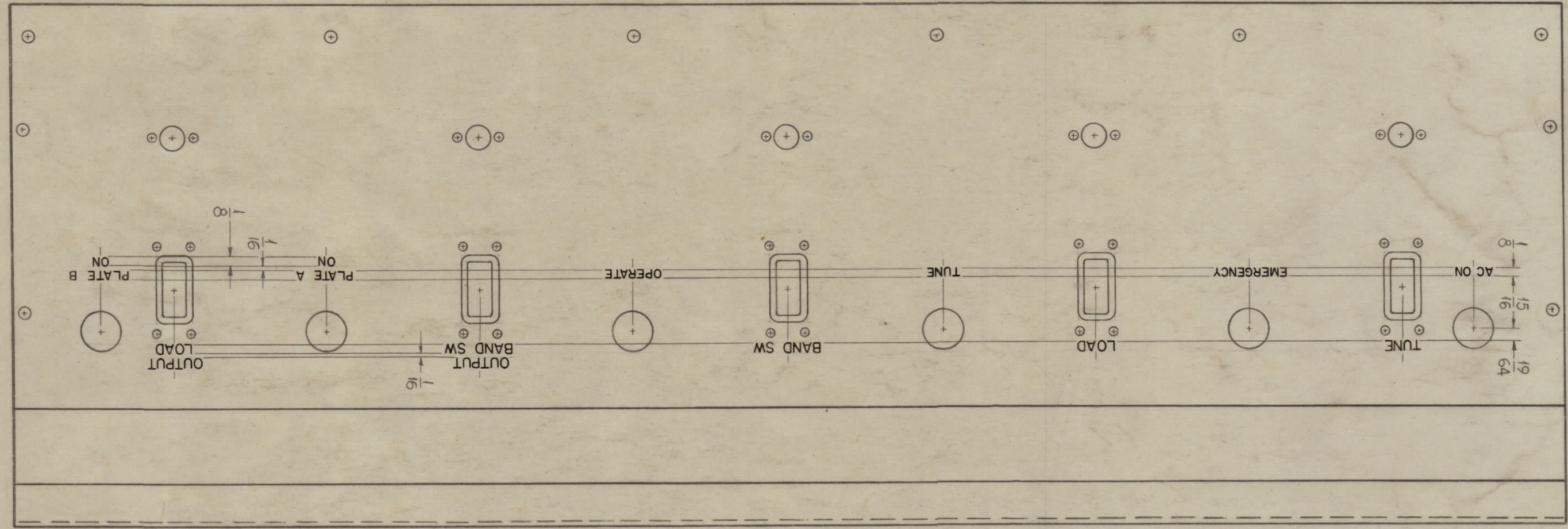
REV. LTR. 0

SHEET 1 OF 2

LD-1204

0

FRONT VIEW SHOWN



REF: MS-3193

LIST OF MATERIAL

F. BUDETTI

MATERIAL

FINISH

TITLE

ENGRAVING PANEL FRONT, PA TUNING

MAMARONECK, NEW YORK

THE TECHNICAL MATERIEL CORP.

REVISIONS

ZONE SWM DESCRIPTION DATE E.M.N. NO. DRAFT CHKD APPD

0 ORIGINAL RELEASE FOR PRODUCTION 5-18-64

5-18-64

5-18-64

5-18-64

5-18-64

5-18-64

5-18-64

5-18-64

5-18-64

5-18-64

5-18-64

5-18-64

5-18-64

5-18-64

5-18-64

5-18-64

5-18-64

5-18-64

5-18-64

5-18-64

5-18-64

5-18-64

5-18-64

5-18-64

5-18-64

5-18-64

5-18-64

5-18-64

5-18-64

5-18-64

5-18-64

5-18-64

5-18-64

LD-1204 0