

REVISIONS		ZONE LTR	DESCRIPTION	DATE	EM.NNO	DRAFT	CHKD	APPD

QTY.	ITEM	PART NO.	DESCRIPTION	SYMBOL
6	1	EY 101-5	EYELET, ROLLED FLANGE	A

DATE	FINAL APPROVAL	MECH. DES.	ELECT. DES.	CHECKED	DRAWN	DATE
					G-D.L	7-3-8

UNLESS OTHERWISE SPECIFIED DIMENSIONS ARE IN INCHES AND INCLUDE CHEMICALLY APPLIED OR PLATED FINISHES

TOLERANCES ON

DECIMALS .X ± .05  
FRACTIONS ± 1/64  
ANGLES ± 0°.30'

MATERIAL .032/.037 THK  
STEEL HOT TIN ENAMELED  
FINISH HOT TIN ENAMELED

SCALE 1:1

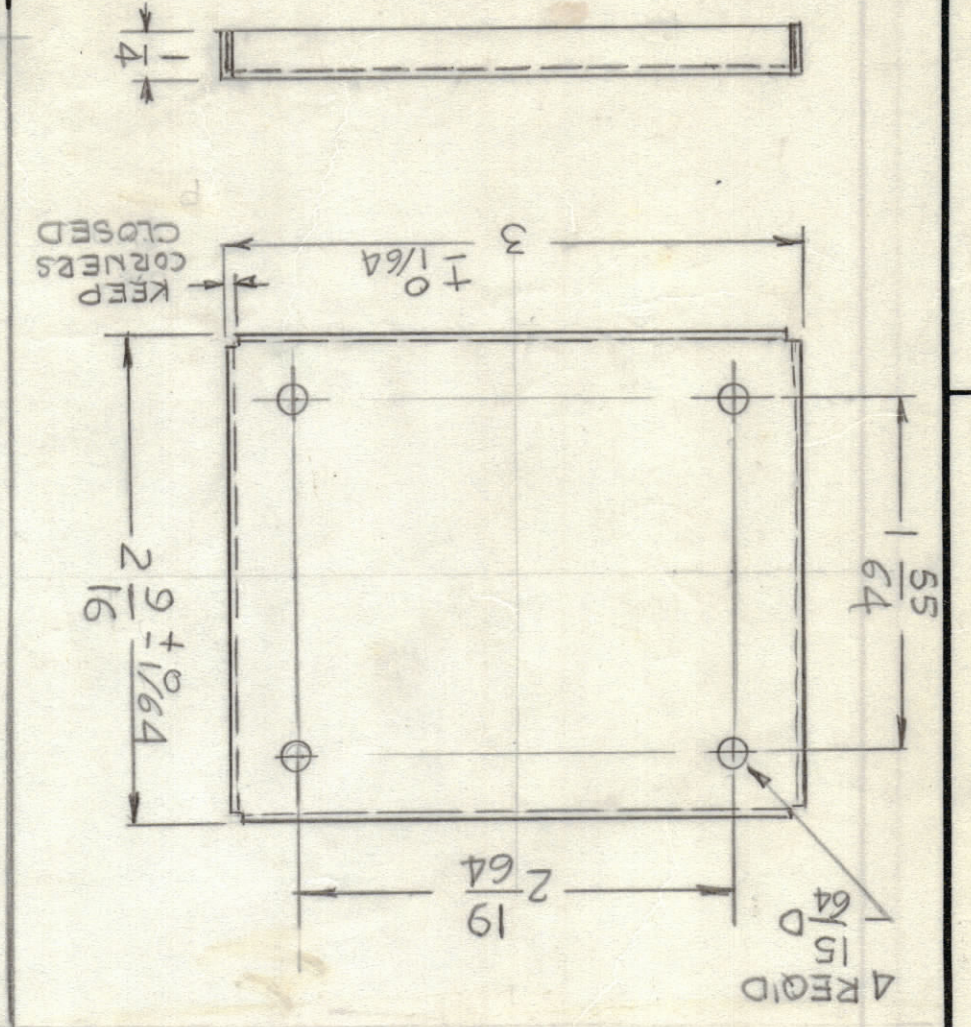
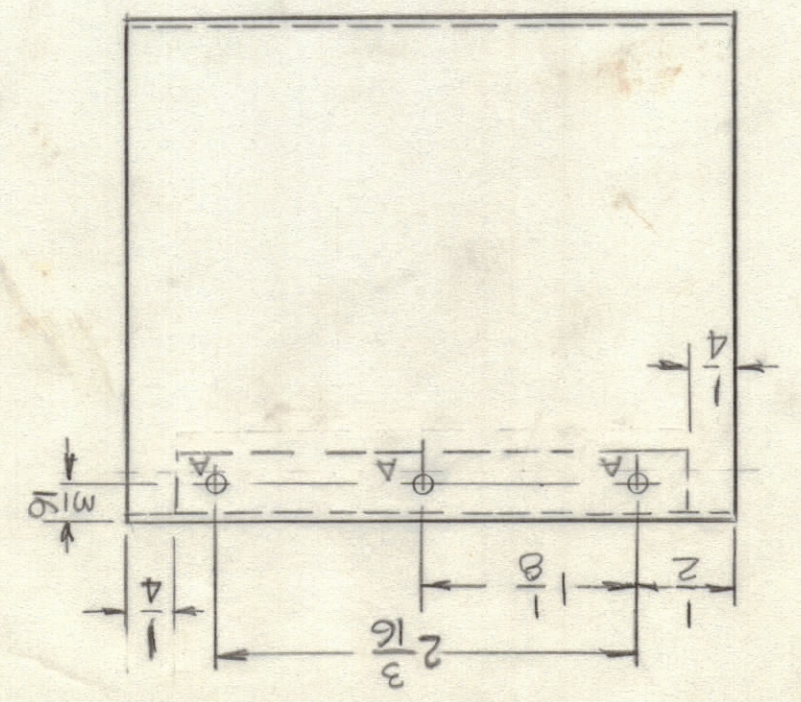
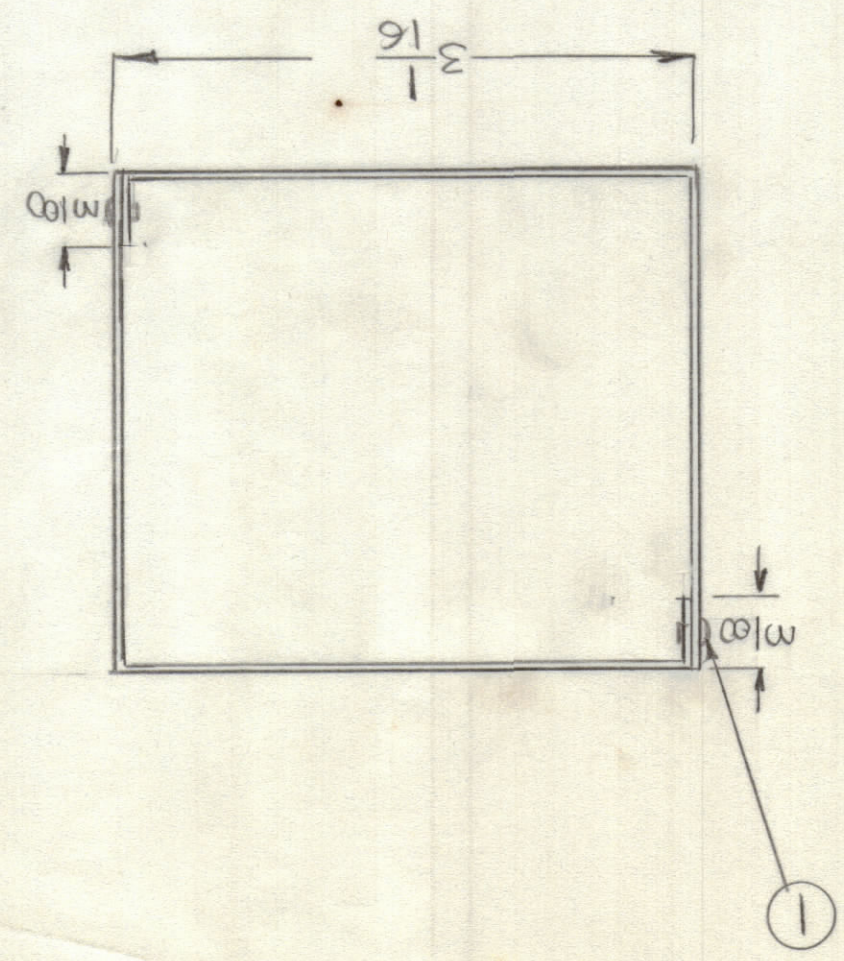
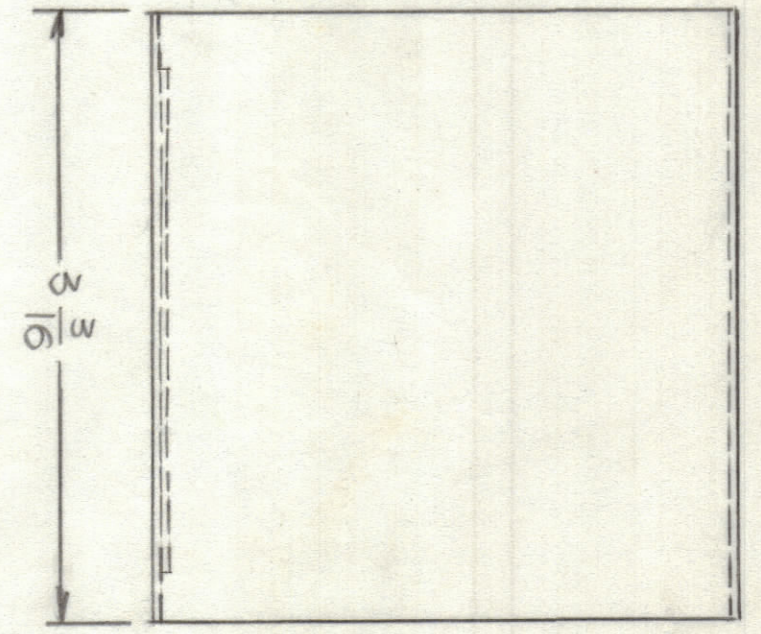
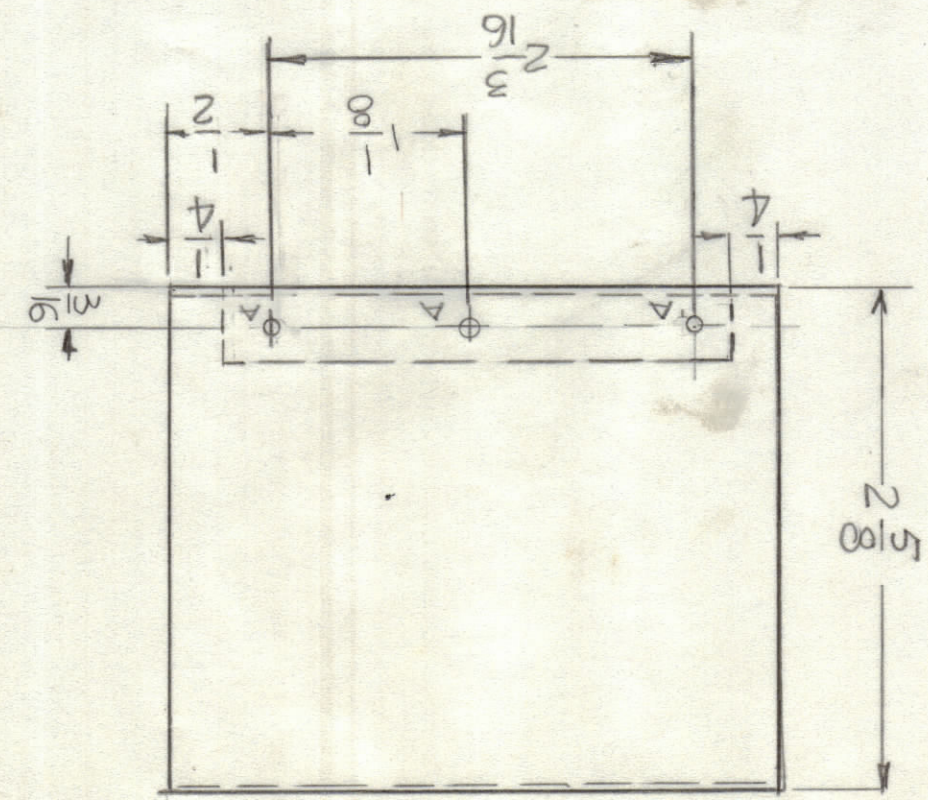
SIZE C  
CODE IDENT. NO. 82679  
DWG. NO. BX236

SHEET OF

CASE & COVER

THE TECHNICAL MATERIEL CORP.  
MAMARONECK, NEW YORK

HOLES: DIA .067 6 REQ'D



COVER BOTTOM ASSHOWN  
COVER TOP NO HOLES REQ'D

QTY / UNIT	MODEL USED ON	ASSY. NO.

APPLICATION

STANDARD

NOTICE TO PERSONS RECEIVING THIS DRAWING  
THE TECHNICAL MATERIEL CORPORATION claims proprietary right in the material disclosed herein. This drawing is issued in confidence for engineering information only and may not be reproduced or used to manufacture anything shown hereon without permission from THE TECHNICAL MATERIEL CORPORATION to the user. This drawing is loaned for mutual assistance and is subject to recall at any time.