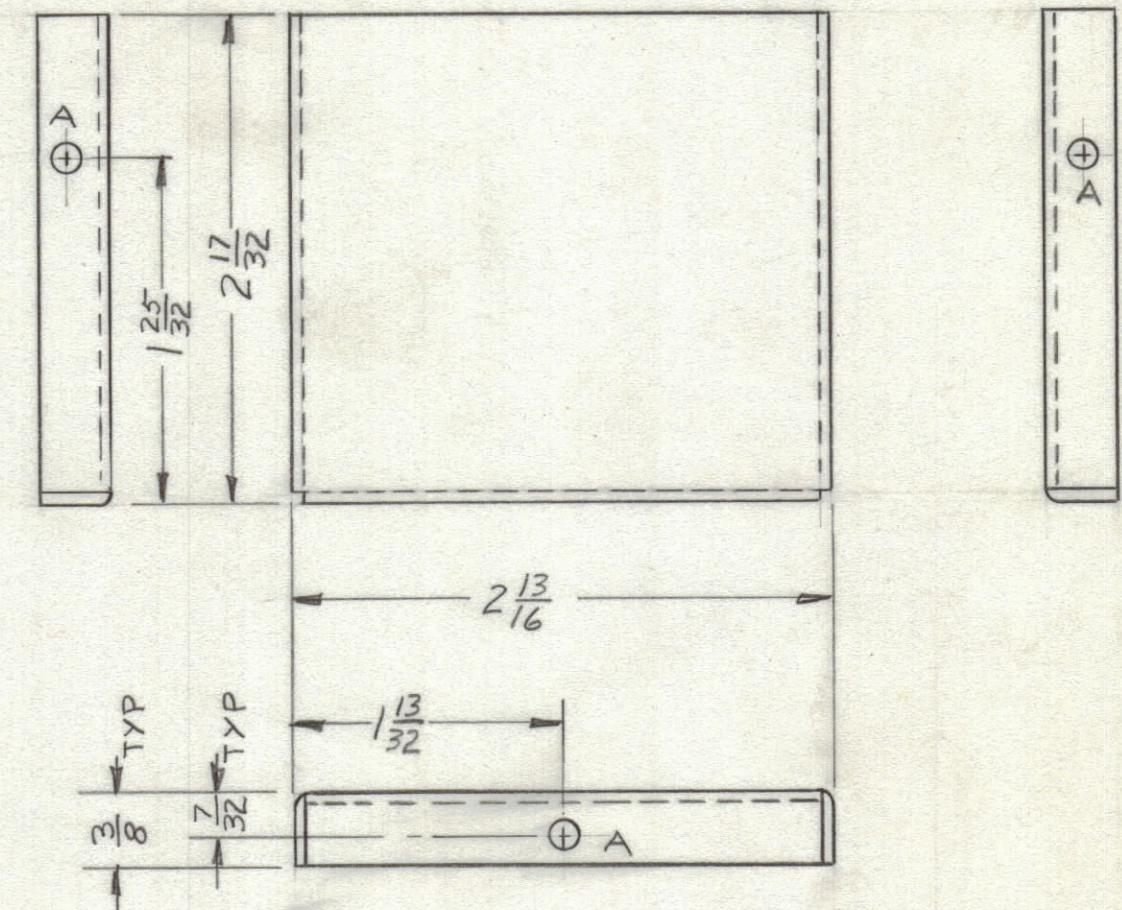
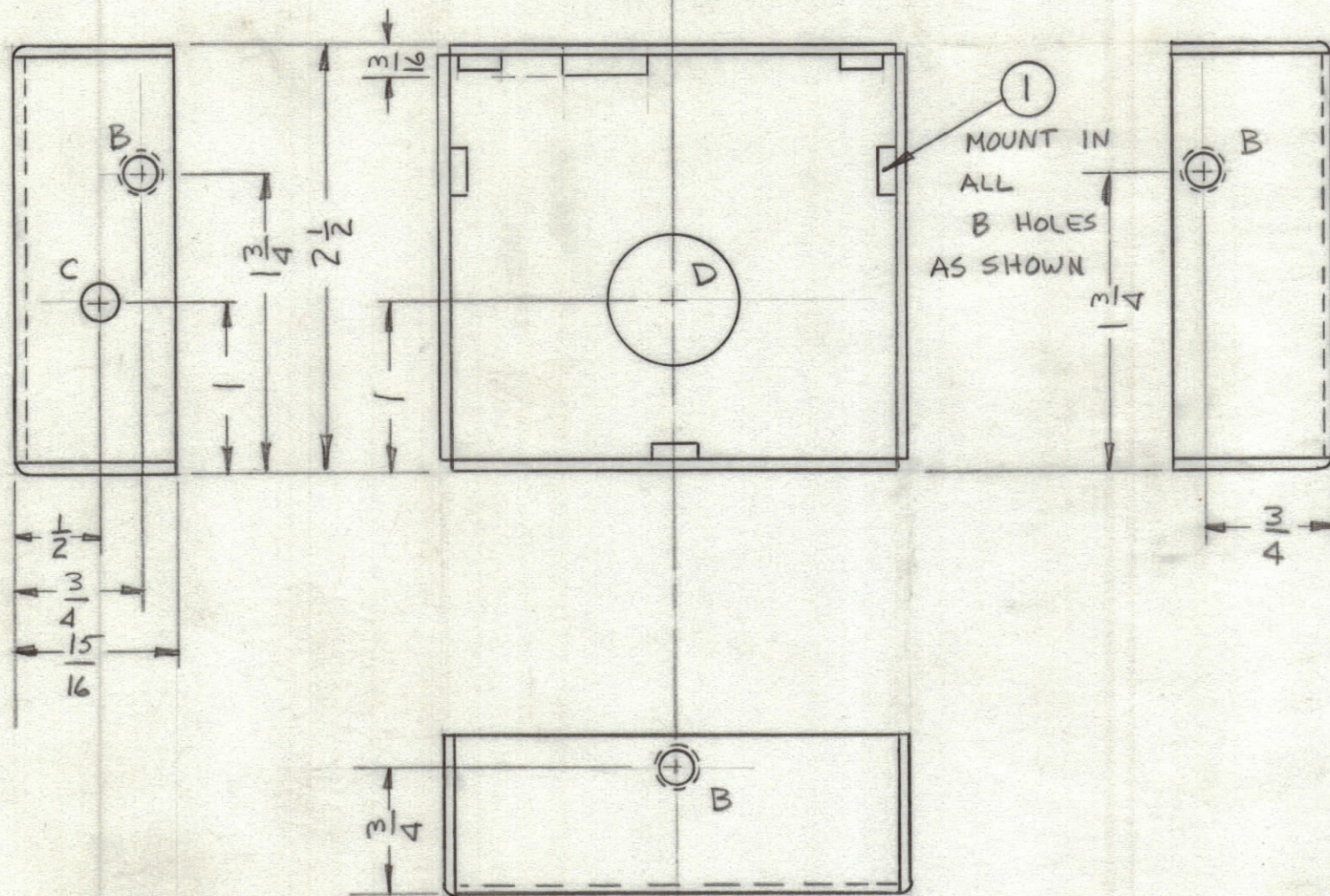
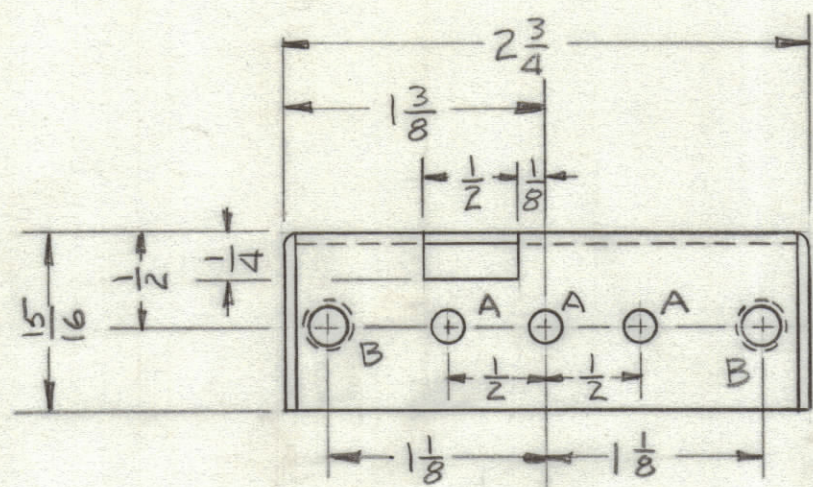


ENGINEERING SKETCH NOT FOR PRODUCTION

REVISIONS						
ZONE	LTR	DESCRIPTION	DATE	E.M.N.NO	DRAFT	CHKD APPD
	Ø	ORIGINAL RELEASE FOR PRODUCTION	3/9/72		Ø	



- A ~ 5/32 DIA 6 REQ'D
- B ~ .161-.164 DIA 5 REQ'D
- C ~ 13/64 DIA 1 REQ'D
- D ~ 3/4 DIA 1 REQ'D

QTY. REQ.	ITEM	PART NO.	DESCRIPTION	SYMBOL
5	1	NT129-0440-1	NUT, PLN, SPLINE	B

LIST OF MATERIAL
THE TECHNICAL MATERIEL CORP.
 MAMARONECK, NEW YORK

BOX XFMR

1	HFLA-10K	TZ229
QTY / UNIT	MODEL USED ON	ASS'Y NO.
APPLICATION		
CODE		

NOTICE TO PERSONS RECEIVING THIS DRAWING
 THE TECHNICAL MATERIEL CORPORATION claims proprietary right in the material disclosed hereon. This drawing is issued in confidence for engineering information only and may not be reproduced or used to manufacture anything shown hereon without permission from THE TECHNICAL MATERIEL CORPORATION to the user. This drawing is loaned for mutual assistance and is subject to recall at any time.

UNLESS OTHERWISE SPECIFIED DIMENSIONS ARE IN INCHES AND INCLUDE CHEMICALLY APPLIED OR PLATED FINISHES

TOLERANCES ON
 DECIMALS .X ± .05
 .XX ± .01
 .XXX ± .005
 FRACTIONS ± 1/64
 ANGLES ± 0° -30'

MATERIAL .030 COPPER

FINISH NATURAL

FINAL APPROVAL	DATE
MECH. DES.	DATE
ELECT. DES.	DATE
CHECKED	DATE
DRAWN	DATE

SIZE	CODE	IDENT. NO.	DWG NO.	ISSUE
C	82679	BX234	Ø	
SCALE	SHEET		OF	