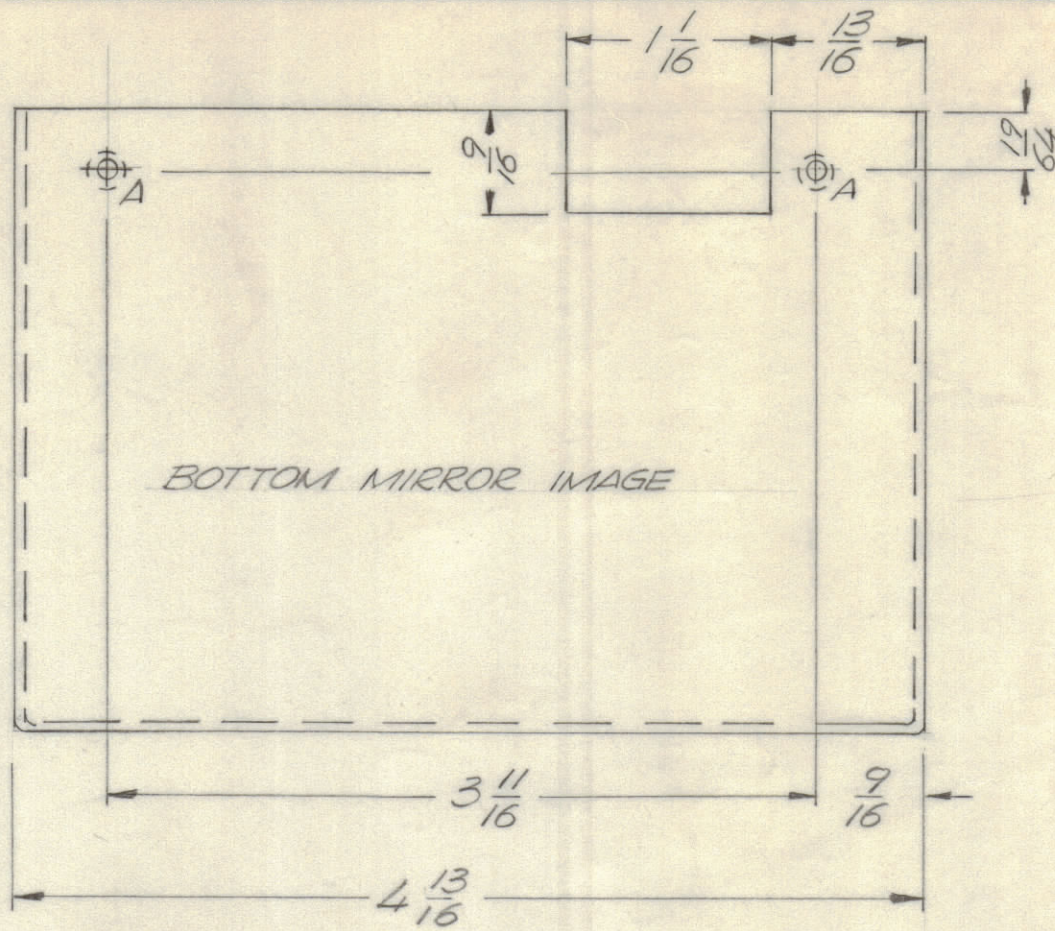
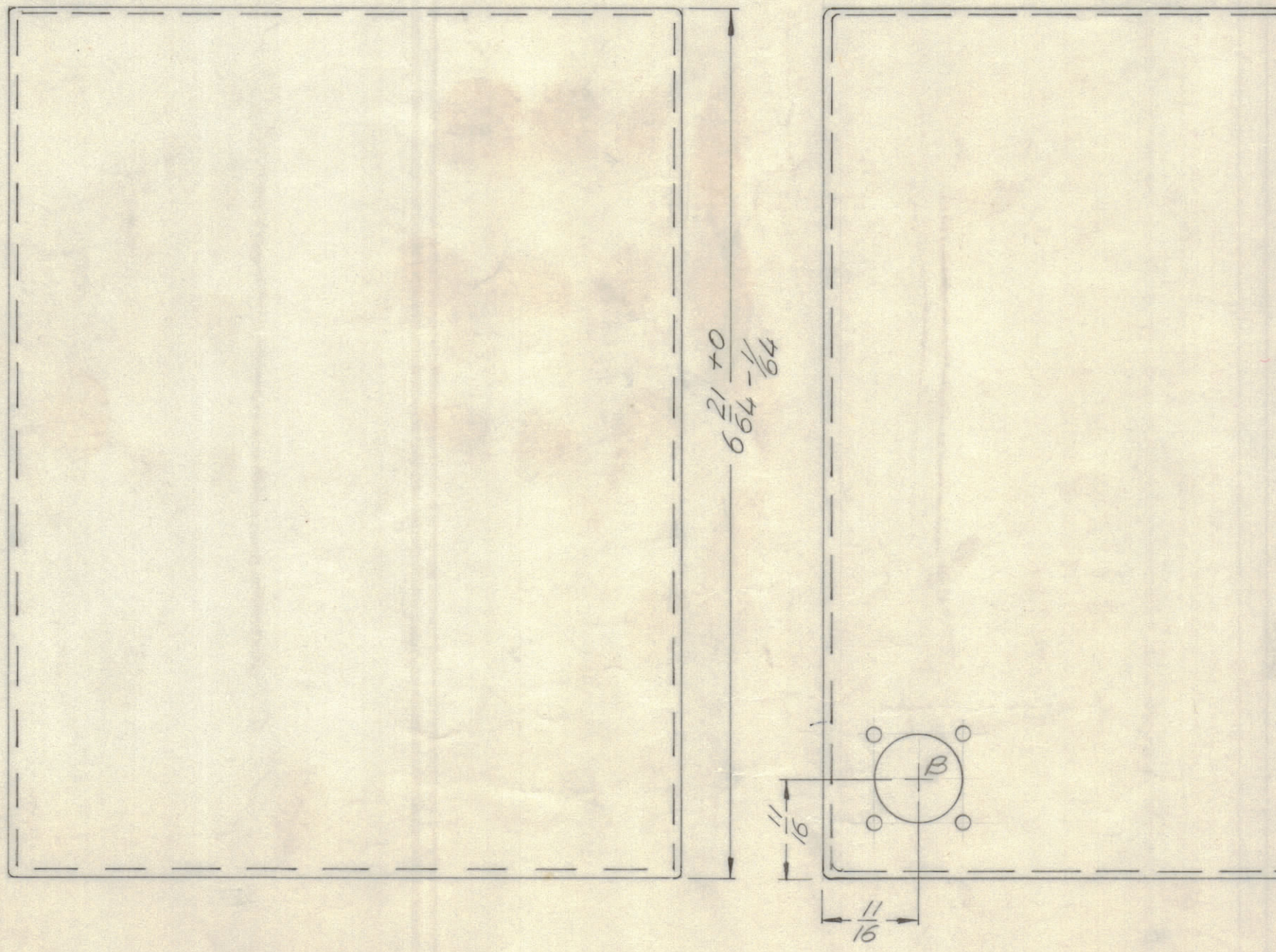
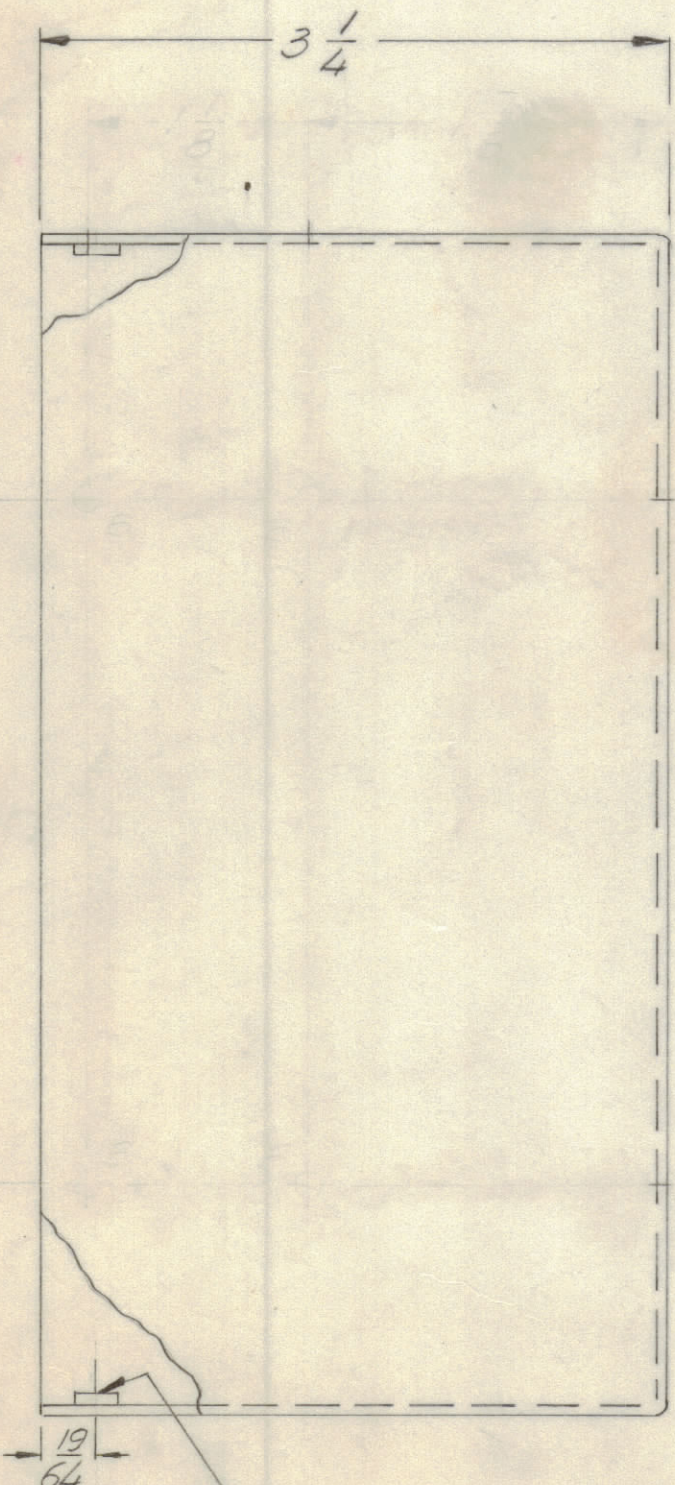
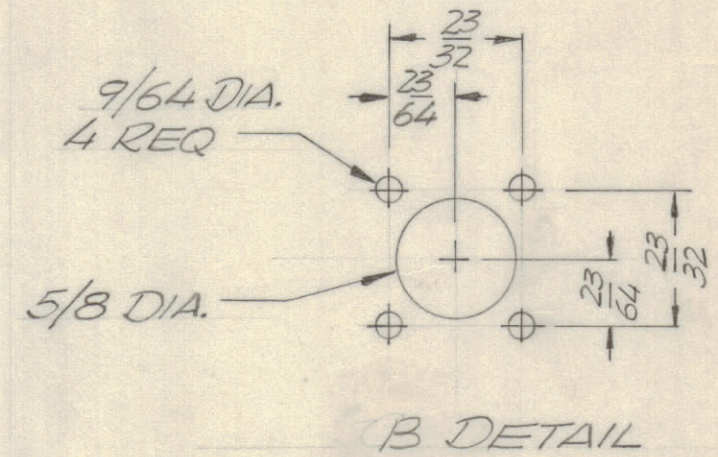


					REVISIONS		
E.M.N.NO	DRAFT	CHKD	ZONE	LTR	DESCRIPTION	DATE	APPROVED
20107	GE	GR		B	COMPLETELY REDRAWN	12/30/70	P.E.B.



HOLE DESCRIPTION REQ.
 A .191-.194 DIA. 4
 B SEE DETAIL 1



1 MOUNT AS SHOWN

- UNLESS OTHERWISE SPECIFIED:
1. USE MATERIAL THICKNESS FOR MAXIMUM RADIUS ON ALL BENDS.
 2. ALL ANGULAR BENDS 90 DEGREES.
 3. REMOVE ALL BURRS AND SHARP EDGES.
 4. MOUNT INSERTS AFTER FINISHING.

1	LFRR-4	AX5007
QTY / UNIT	MODEL USED ON	ASS'Y NO.
APPLICATION		
CODE		

NOTICE TO PERSONS RECEIVING THIS DRAWING
 THE TECHNICAL MATERIEL CORPORATION claims proprietary right in the material disclosed hereon. This drawing is issued in confidence for engineering information only and may not be reproduced or used to manufacture anything shown hereon without permission from THE TECHNICAL MATERIEL CORPORATION to the user. This drawing is loaned for mutual assistance and is subject to recall at any time.

LD 2342

UNLESS OTHERWISE SPECIFIED DIMENSIONS ARE IN INCHES AND INCLUDE CHEMICALLY APPLIED OR PLATED FINISHES

TOLERANCES ON

DECIMALS	FRACTIONS
.X ± .05	± 1/64
.XX ± .01	ANGLES
.XXX ± .005	± 0° -30'

MATERIAL .051 ALUM
5052 H 32

FINISH YEL. IRIDITE
S 404

4	1	NT 129-632-3	NUT PLAIN SPLINE	
QTY. REQ.	ITEM	PART NO.	DESCRIPTION	SYMBOL
LIST OF MATERIAL				
FINAL APPROVAL: [Signature] DATE: 11/5/70 MECH. DES.: [Signature] DATE: 11/4/70 ELECT. DES.: DATE: CHECKED: P.E.B. DATE: 11/10/70 DRAWN: GE DATE: 11/2/70				
THE TECHNICAL MATERIEL CORP. MAMARONECK, NEW YORK				
BOX, INPUT FILTER				
SIZE	CODE	IDENT NO.	DWG NO.	ISSUE
C	82679		BX 229	B
SCALE NTS				SHEET OF