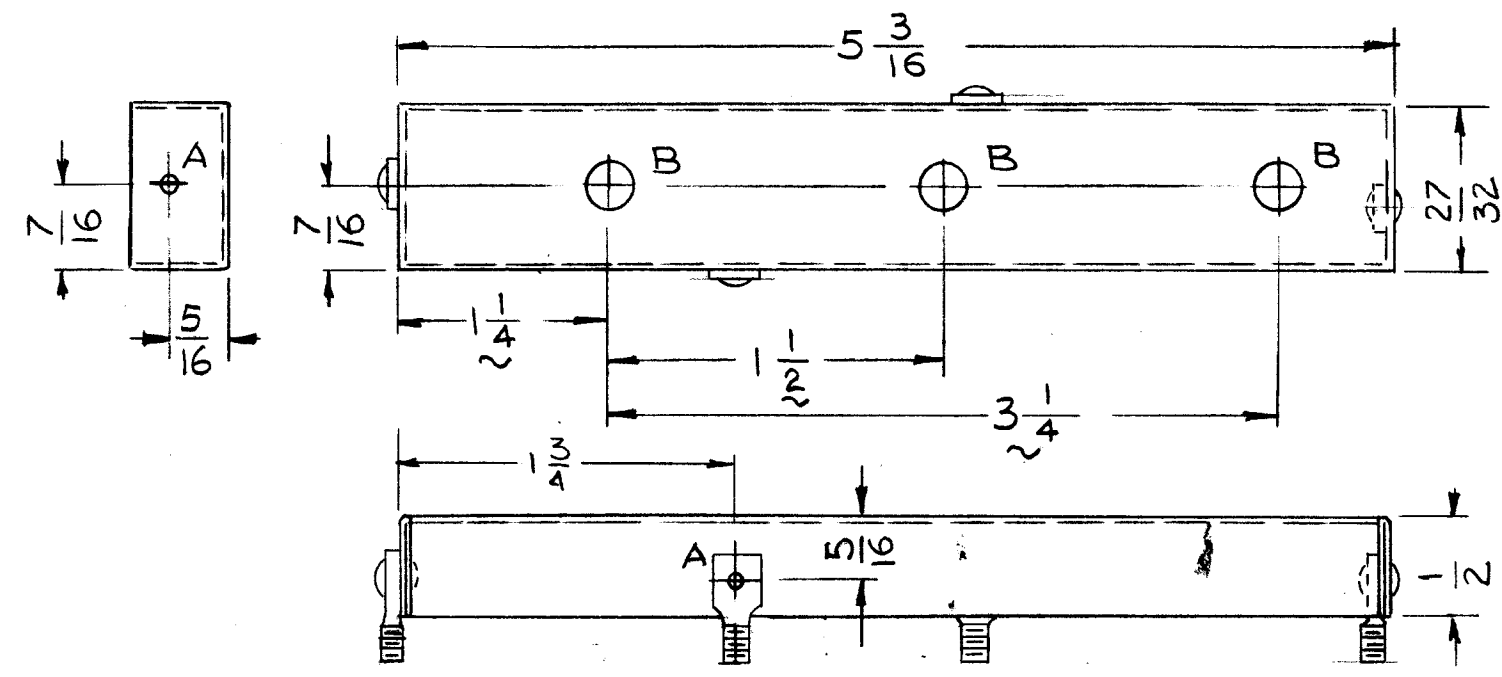
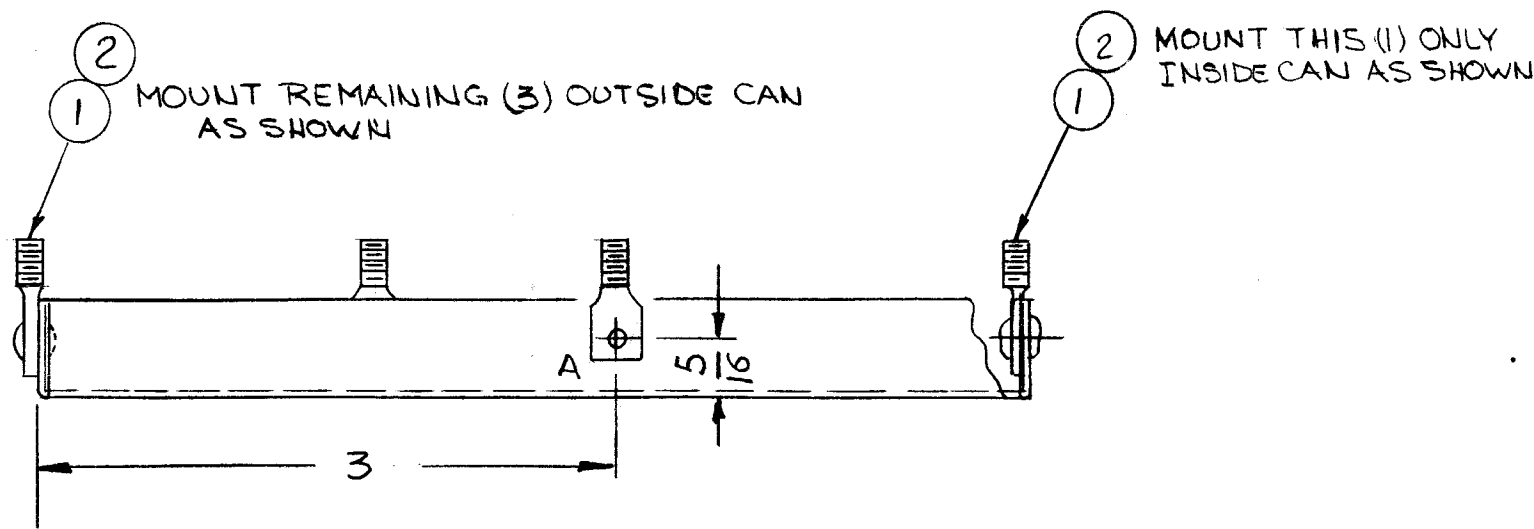


REVISIONS						
ZONE	LTR	DESCRIPTION	DATE	E.M.N.NO	DRAFT	CHKD APPD
	X	EXP. RELEASE	12-20-67		G.D.L.	
	Ø	ORIG. RELEASE FOR PROD.	1-10-68		R.G.	
	A	CHANGED LOC OF B HOLES	10/23/69	19624	K.D.	
	B	SPADE LUGS MT'D AS SHOWN	9/22/72	21577	PH	



~ HOLES ~
 A - 1/16 DIA. 4 REQ.
 B - 1/4 DIA. 3 REQ.

- UNLESS OTHERWISE SPECIFIED:
1. USE MATERIAL THICKNESS FOR MAXIMUM RADIUS ON ALL BENDS.
 2. ALL ANGULAR BENDS 90 DEGREES
 3. REMOVE ALL BURRS AND SHARP EDGES
 4. MOUNT INSERTS AFTER FINISHING

1	CHG-() 4	A 4504
1	VOX-7	A 4504
1	MMX-()	A 4504
QTY / UNIT	MODEL USED ON	ASS'Y NO.
APPLICATION		
	CODE	5401-451
NOTICE TO PERSONS RECEIVING THIS DRAWING		
THE TECHNICAL MATERIEL CORPORATION claims proprietary right in the material disclosed hereon. This drawing is issued in confidence for engineering information only and may not be reproduced or used to manufacture anything shown hereon without permission from THE TECHNICAL MATERIEL CORPORATION to the user. This drawing is loaned for mutual assistance and is subject to recall at any time.		

UNLESS OTHERWISE SPECIFIED DIMENSIONS ARE IN INCHES AND INCLUDE CHEMICALLY APPLIED OR PLATED FINISHES

DECIMALS: .X ± .05, .XX ± .01, .XXX ± .005
 FRACTIONS: 1/64, ANGLES: 0° .30'

MATERIAL: .022 C.R. COPPER
 FINISH: TIN PLATE

4	2	EY 101-5	EYELET, MTL	A
4	1	SC106-3	BOLT, EYE SPADE	A
REQ'D	ITEM	PART NUMBER	DESCRIPTION	SYM.
O. POSE		LIST OF MATERIAL SK3246 - C1		
THE TECHNICAL MATERIEL CORP. MAMARONECK, NEW YORK				
COVER, SHIELD RF				
SIZE	CODE IDENT. NO.	DWG NO.	ISSUE	
B	82679	BX 228	B	
SCALE	1:1	SHEET OF		