

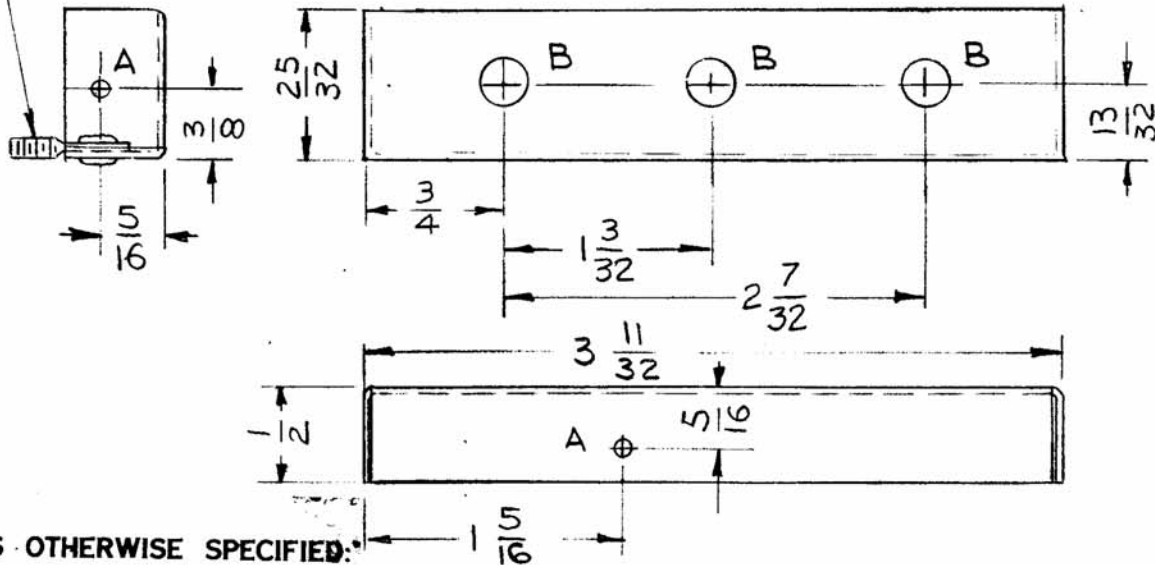
APPLICATION			REVISIONS						
QTY	MODEL USED ON	ASS'Y NO.	LTR	DESCRIPTION	DATE	E.M.N.NO	DRAFT	CHKD	APPD
1	MMX-()	4504	X	EXP. RELEASE	12-20-67	-	GDL		
1	CHG-() 4	4504	Ø	ORIG. RELEASE FOR PROD.	1-10-68		R.G.		
1	VOX-7	4504	A	MODIFY	9-22-77	21578	PH	K.P.	

② MOUNT IN TWO "A" HOLES

- HOLES -

A - 1/16 DIA. 2REQ.
B - 1/4 DIA. 3REQ.

①



UNLESS OTHERWISE SPECIFIED:

1. USE MATERIAL THICKNESS FOR MAXIMUM RADIUS ON ALL BENDS
2. ALL ANGULAR BENDS 90 DEGREES
3. REMOVE ALL BURRS AND SHARP EDGES
4. MOUNT INSERTS AFTER FINISHING

REQ'D ITEM	PART NUMBER	DESCRIPTION	SYM.	
2	2	EY101-5	EYELET, MTL	A
2	1	SC106-3	BOLT, EYE-SPADE	A

UNLESS OTHERWISE SPECIFIED DIMENSIONS ARE IN INCHES AND INCLUDE CHEMICALLY APPLIED OR PLATED FINISHES

DECIMALS X ± .05 .XX ± .01 .XXX ± .005	FRACTIONS 1/64 ANGLES 0°-30°	TOLS.
---	---------------------------------------	-------

MATERIAL .022 C.R COPPER
FINISH TIN PLATE
S401-451

MECH. DES. DATE 1-10-69
ELECT. DES. DATE 1-10-68
CHECKED DATE 1-10-68
DRAWN GDL DATE 12-20-67

O. POSE LIST OF MATERIAL SK 3246-C2

FINAL APPROVAL DATE 1-10-69
MECH. DES. DATE 1-10-69
ELECT. DES. DATE 1-10-68
CHECKED DATE 1-10-68
DRAWN GDL DATE 12-20-67

THE TECHNICAL MATERIEL CORP.
MAMARONECK, NEW YORK

COVER, SHIELD RF

NOTICE TO PERSONS RECEIVING THIS DRAWING THE TECHNICAL MATERIEL CORPORATION claims proprietary right in the material disclosed hereon. This drawing is issued in confidence for engineering information only and may not be reproduced or used to manufacture anything shown hereon without permission from THE TECHNICAL MATERIEL CORPORATION to the user. This drawing is loaned for mutual assistance and is subject to recall at any time.	SIZE A	CODE IDENT. NO. 82679	DWG NO. BX 227	ISSUE A
	SCALE 1:1	S401-451	SHEET	OF