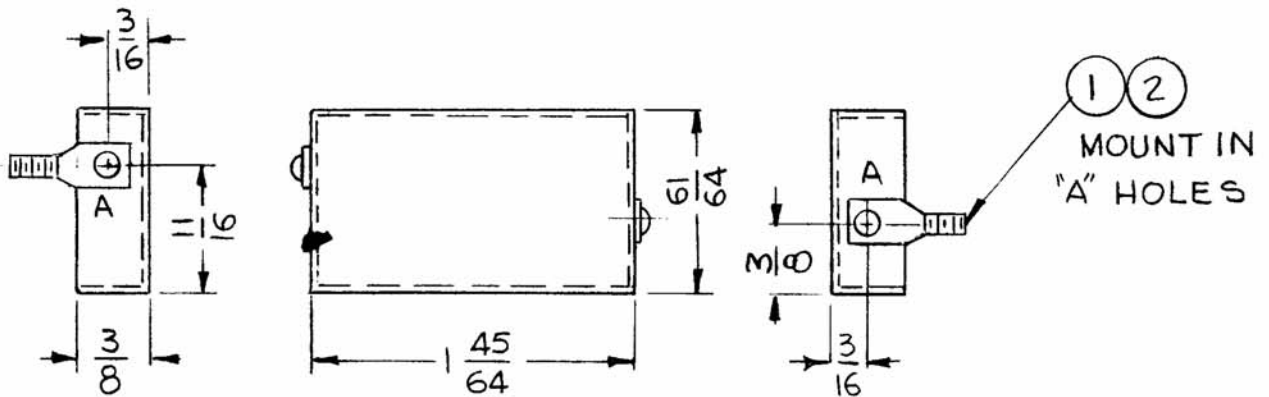


APPLICATION			REVISIONS						
QTY	MODEL USED ON	ASS'Y NO.	LTR	DESCRIPTION	DATE	E.M.N.NO	DRAFT	CHKD	APPD
1	MMX-()	A4505	X	EXP RELEASE	6.6.67	4	WU		
1	CHG-()4	A4505	X1	NOTE "OBSOLETE" ADDED	8-2-67	7	G.D.L		
			Ø	ORIG RELEASE FOR PROD	8-2-67	Ø	RG		
			A	COMPLETELY REVISED & UP DATED. NOTE OBSOLETE DEL.	12-29-67	18685	G.D.L		



- HOLE -
A - .067 DIA. 2 REQ.

- UNLESS OTHERWISE SPECIFIED:
1. USE MATERIAL THICKNESS FOR MAXIMUM RADIUS ON ALL BENDS
 2. ALL ANGULAR BENDS 90 DEGREES
 3. REMOVE ALL BURRS AND SHARP EDGES
 4. MOUNT INSERTS AFTER FINISHING

REQ'D	ITEM	PART NUMBER	DESCRIPTION	SYM.
2	2	EY101-5	EYELET, MTL	A
2	1	SC106-3	BOLT, EYE SPADE	A
O. POSE LIST OF MATERIAL SK3246 MS3 THE TECHNICAL MATERIEL CORP. MAMARONECK, NEW YORK SHIELD, OUTPUT, RF				
UNLESS OTHERWISE SPECIFIED DIMENSIONS ARE IN INCHES AND INCLUDE CHEMICALLY APPLIED OR PLATED FINISHES DECIMALS FRACTIONS .X ± .05 1/64 .XX ± .01 TOLS. ANGLES .XXX ± .005 0°-30°		FINAL APPROVAL <i>[Signature]</i> DATE 3-4-67 MECH. DES. <i>[Signature]</i> DATE ELECT. DES. <i>[Signature]</i> DATE 8-2-67 CHECKED <i>[Signature]</i> DATE 8-2-67 DRAWN <i>[Signature]</i> DATE 6-6-67		

NOTICE TO PERSONS RECEIVING THIS DRAWING THE TECHNICAL MATERIEL CORPORATION claims proprietary right in the material disclosed hereon. This drawing is issued in confidence for engineering information only and may not be reproduced or used to manufacture anything shown hereon without permission from THE TECHNICAL MATERIEL CORPORATION to the user. This drawing is loaned for mutual assistance and is subject to recall at any time.	SIZE A	CODE IDENT. NO. 82679	DWG NO. BX224	ISSUE A
	SCALE 1:1		SHEET OF	