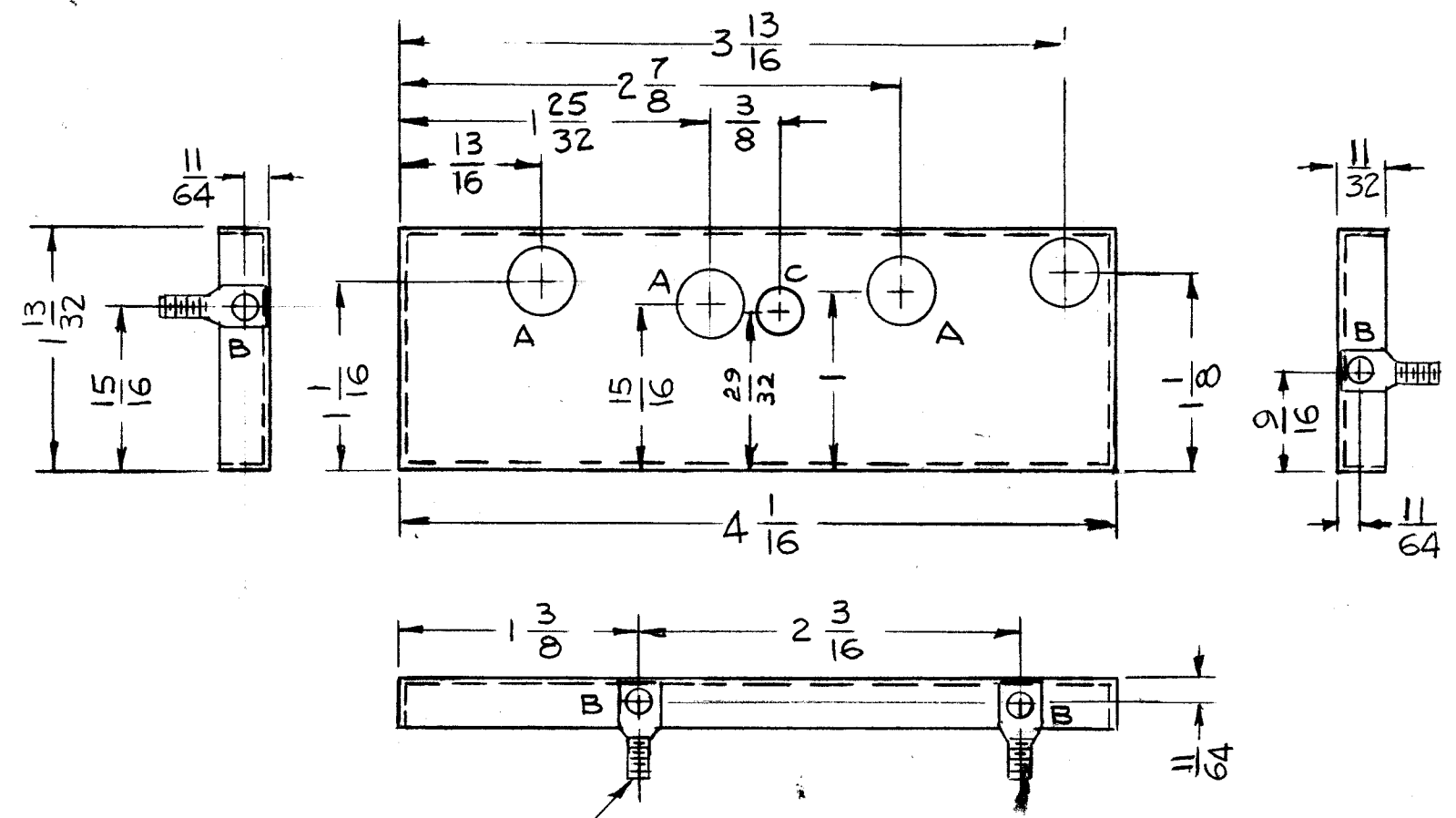


REVISIONS						
ZONE	LTR	DESCRIPTION	DATE	E.M.N.NO	DRAFT	CHKD APPD
	X	EXP RELEASE	6.7.67		WJW	
	X1	NOTE "OBSOLETE" ADDED	8-2-67		G.D.L	
	Ø	ORIG. RELEASE FOR PROD.	8-2-67	Ø	RG	
	A	COMPLETELY REVISED & UPDATED. NOTE OBSOLETE DEL.	12-29-67	18685	G.D.L	OP
	B	ADDED C HOLE	10/23/69	19624	KD	O.P.
	C	11/32 WAS 9/32 & 1/64 WAS 9/64	7-13-76	21400	G.D.L	CL CL



HOLE	DESCRIPTION	REQ
A	3/8 DIA.	4
B	.067 DIA	4
C	.250 DIA	1

- 1 MOUNT IN "B" HOLES
- 2 "B" HOLES

UNLESS OTHERWISE SPECIFIED:

- USE MATERIAL THICKNESS FOR MAXIMUM RADIUS ON ALL BENDS
- ALL ANGULAR BENDS 90 DEGREES
- REMOVE ALL BURRS AND SHARP EDGES
- MOUNT INSERTS AFTER FINISHING

1	CHG-()4	A4505	UNLESS OTHERWISE SPECIFIED DIMENSIONS ARE IN INCHES AND INCLUDE CHEMICALLY APPLIED OR PLATED FINISHES
1	MMX-()	A4505	
QTY / UNIT	MODEL USED ON	ASS'Y NO.	DECIMALS .X ± .05 .XX ± .01 .XXX ± .005
APPLICATION			FRACTIONS 1/64 ANGLES 0° .30'
	CODE	S401-451	MATERIAL .022 C.R. COPPER
NOTICE TO PERSONS RECEIVING THIS DRAWING			FINISH TIN PLATE
THE TECHNICAL MATERIEL CORPORATION claims proprietary right in the material disclosed hereon. This drawing is issued in confidence for engineering information only and may not be reproduced or used to manufacture anything shown hereon without permission from THE TECHNICAL MATERIEL CORPORATION to the user. This drawing is loaned for mutual assistance and is subject to recall at any time.			

4	2	EY101-5	EYELET, MTL	B
4	1	SC106-3	BOLT, EYE SPADE	B
REQ'D	ITEM	PART NUMBER	DESCRIPTION	SYM.
O. POSE		LIST OF MATERIAL SK3246 MS2		
FINAL APPROVAL		DATE	THE TECHNICAL MATERIEL CORP.	
MECH. DES.		8-4-67	MAMARONECK, NEW YORK	
ELECT. DES.		DATE	SHIELD, AMPLIFIER, RF	
CHECKED		8-2-67		
DRAWN		6.7.67		
M/L		DATE		
SIZE	CODE IDENT. NO.	DWG NO.	ISSUE	
B	82679	BX223	C	
SCALE 1:1		SHEET OF		