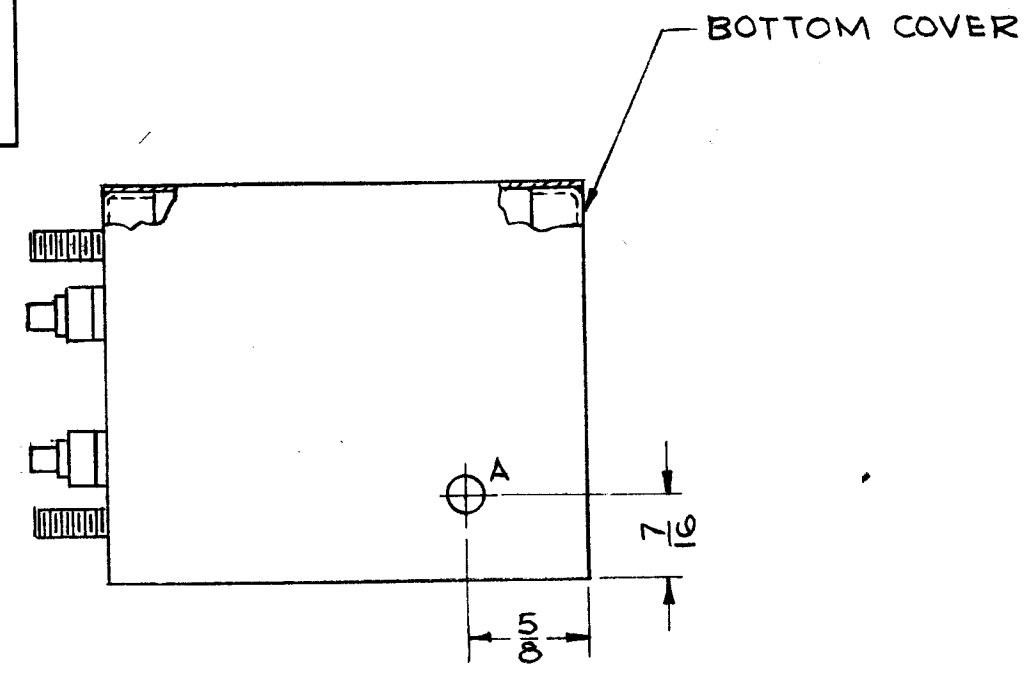
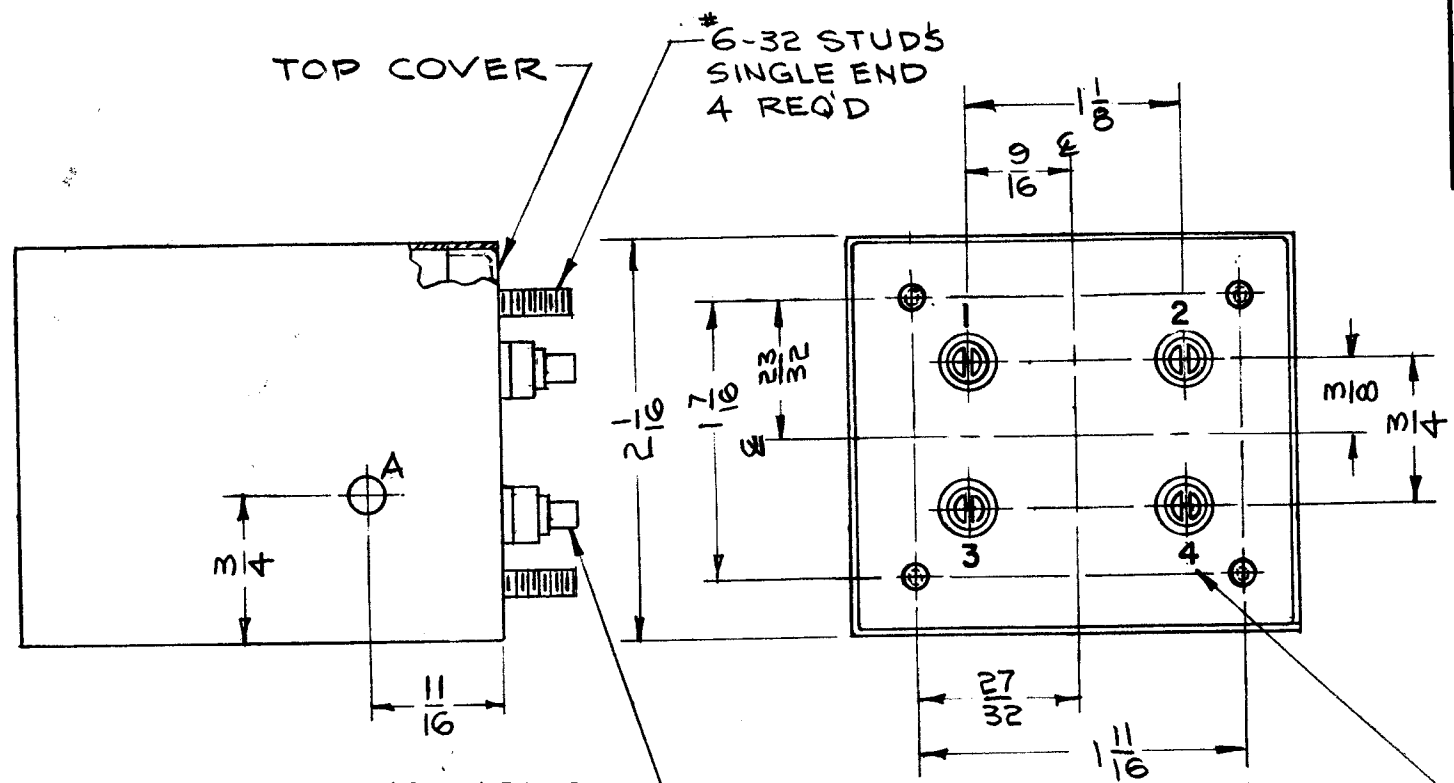


REVISIONS

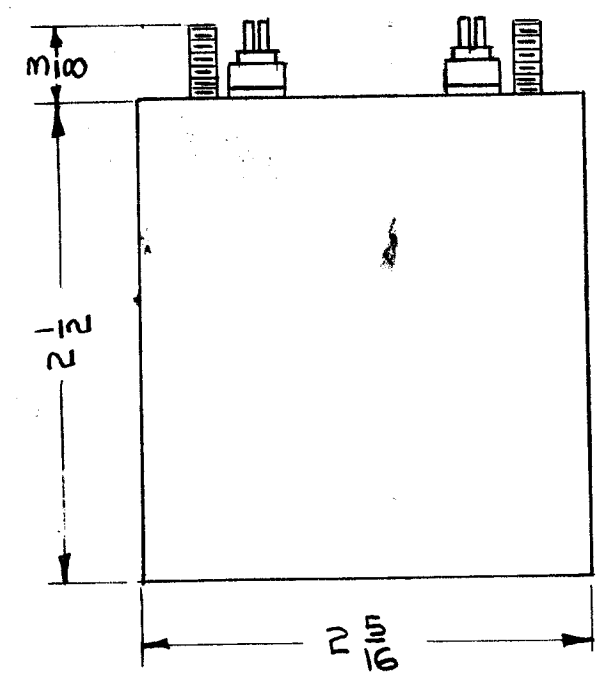
SYM	DESCRIPTION	DATE	E.M.N. NO.	DRAFT	CHKD	APPD
-----	-------------	------	------------	-------	------	------

BX-209



A = 3/16 DIA HOLE 2 REQ'D

METAL STAMP 1/8 HIGH GOTHIC AS SHOWN



REF: TMC BX-100-8. MODIFIED.

REQ'D.	ITEM	PART NUMBER	DESCRIPTION	SYMBOL
<b>LIST OF MATERIAL</b>				
MATERIAL		THE TECHNICAL MATERIEL CORP.		
.019-.025 THK STEEL		MAMARONECK, NEW YORK		
FINISH		TITLE		
HOT-TINNED		CASE & COVERS		
UNLESS OTHERWISE SPECIFIED DIMENSIONS ARE IN INCHES AND INCLUDE CHEMICALLY APPLIED OR PLATED FINISHES		DRAWN	DATE	FINAL APPROVAL
		YNY	7-10-63	BP
		CHECKED	DATE	
		HDe	9/23/63	
		ELECT. DES.	DATE	
				BX-209
		MECH. DES.	DATE	
		SHEET		REV. LTR.

1	DVM-2 & -4	ASS'Y. NO.
Q'TY./UNIT	MODEL USED ON	
SCALE	CODE	
1/1		
THE CONTENTS OF THIS DRAWING ARE THE EXCLUSIVE PROPERTY OF THE TECHNICAL MATERIEL CORP. ITS UNAUTHORIZED USE OR REPRODUCTION IN WHOLE OR IN PART IS STRICTLY FORBIDDEN.		

NOTES