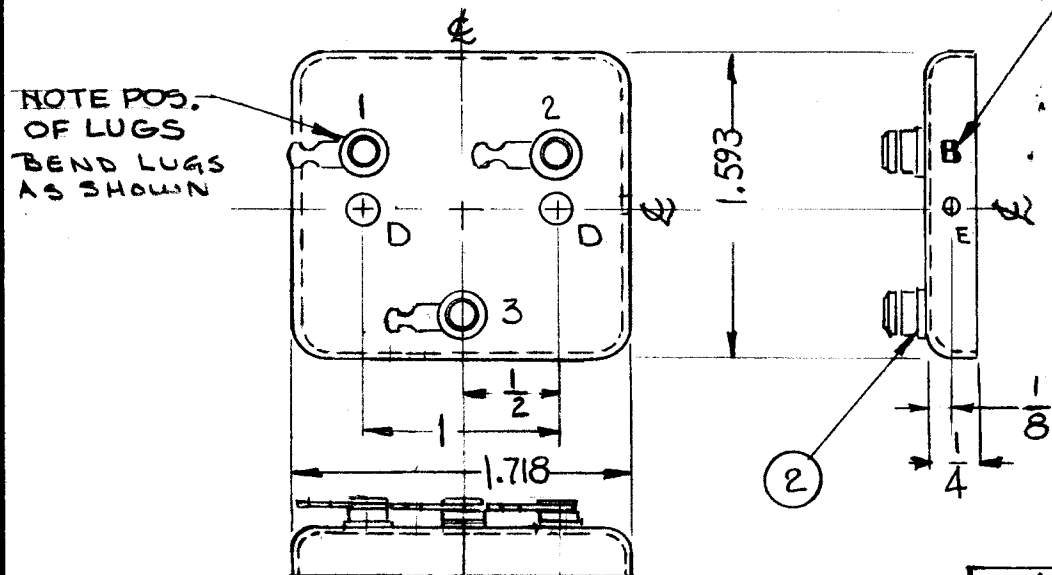


— CASE —

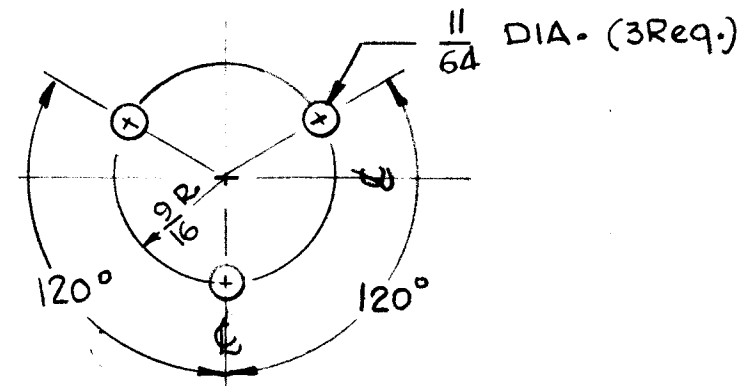


— BOTTOM COVER —

NOTES

- NOTES
- AFTER SWAGE NUT (ITEM 1) HAS BEEN INSTALLED FLOW SOLDER AROUND EDGES OF SWAGED NUT
 - PAINT T.M.C. GRAY (S-115)

HOLE	DESCRIPTION	REQ'D
A	.194-.191 DIA.	2
C	9/32 DIA.	1
D	.150 DIA.	2
E	#47 DR. (.078 DIA)	1
F	3/32 DIA.	1



BOTTOM COVER DRILLING PLAN

SYM	DESCRIPTION	REVISIONS				
		DATE	E.M.N. NO.	DRAFT	CHKD	APP'D
B	REDRAWN & REVISED	2-6-63	8196	G.D.L.		
C	NOTE (1) ADDED. (2) "E" HOLES DELETED. "C" HOLE WAS .252 DIA.	8-29-63	9868	A.K.		
D	NOTE 2 (PAINT T.M.C. GRAY) ADDED	5.8.64	11387	W.B.		
E	IT. 1 WAS NT-129-632-1, "E" HOLE REQ'D WAS 2 "F" HOLE ADDED	6.8.64	11511	W.B.		

E
BX-195

1	GPR-92	A-2137
Q'TY./UNIT	MODEL USED ON	ASS'Y. NO.
SCALE	CODE	
THE CONTENTS OF THIS DRAWING ARE THE EXCLUSIVE PROPERTY OF THE TECHNICAL MATERIEL CORP. ITS UNAUTHORIZED USE OR REPRODUCTION IN WHOLE OR IN PART IS STRICTLY FORBIDDEN.		

3	2	TE-134	LUG, TERMINAL	
2	1	NT-129-632-2	NUT, ROUND, SWAGE TYPE	A
REQ'D.	ITEM	PART NUMBER	DESCRIPTION	SYMBOL
STRUMER LIST OF MATERIAL				
MATERIAL .019 THK. STEEL			THE TECHNICAL MATERIEL CORP. MAMARONECK, NEW YORK	
FINISH HOT TINNED			TITLE CAN AND COVER	
UNLESS OTHERWISE SPECIFIED DIMENSIONS ARE IN INCHES AND INCLUDE CHEMICALLY APPLIED OR PLATED FINISHES			DRAWN G.D.L.	DATE 2-6-63
			CHECKED	DATE 3/5/63
			ELECT. DES.	DATE
			MECH. DES.	DATE
			FINAL APPROVAL	
			BX-195	
			SHEET	
			REV. LTR.	