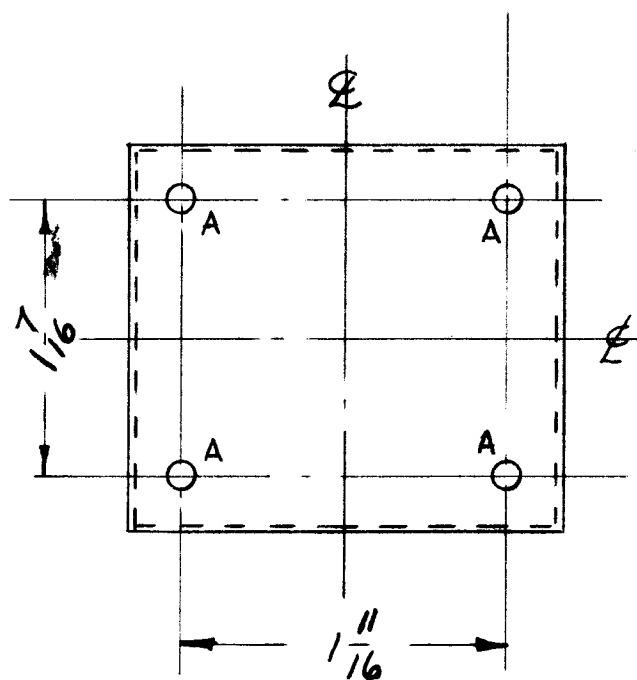
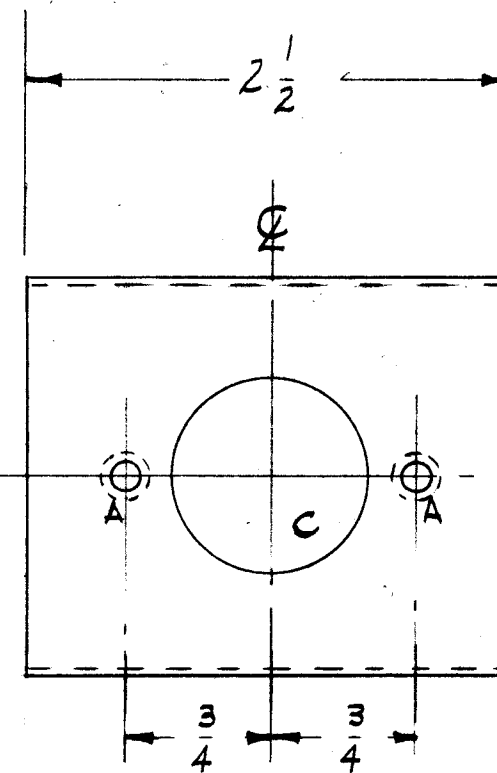
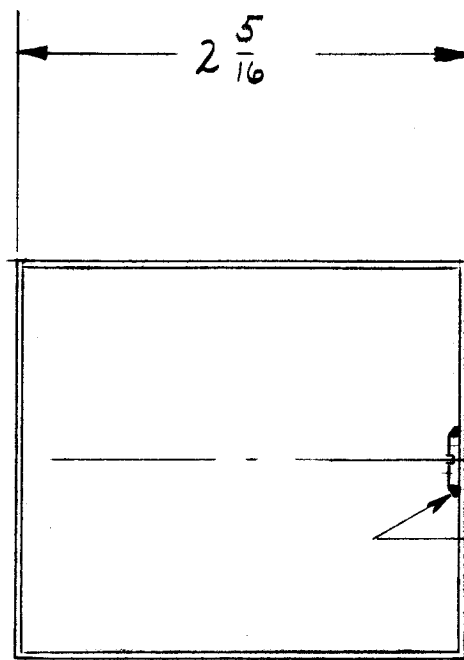
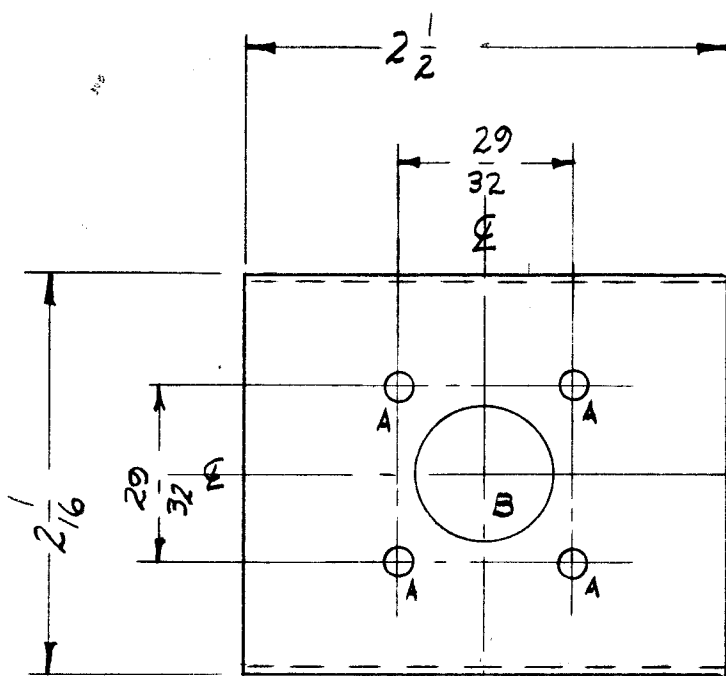


BX 177 B

A - 9/64 DIA.  
 B - 11/16 "  
 C - 1 "

14 REQ'D.



**NOTICE TO PERSONS RECEIVING THIS DRAWING**

THE TECHNICAL MATERIEL CORPORATION claims proprietary right in the material disclosed hereon. This drawing is issued in confidence for engineering information only and may not be reproduced or used to manufacture anything shown hereon without permission from THE TECHNICAL MATERIEL CORPORATION to the user. This drawing is loaned for mutual assistance and is subject to recall at any time.

Property of:  
 THE TECHNICAL MATERIEL CORPORATION  
 MAMARONECK, NEW YORK

ILD-561

REQ. ITEM	PART NO.	DESCRIPTION	SYMBOL
X 2	BS100	SOLDER, TIN ALLOY	
2 1	SCBP0632BN8	SCREW, MACHINE	
.019 - .025		THE TECHNICAL MATERIEL CORP. MAMARONECK, NEW YORK	
STEEL		CASE & COVERS.	
MATERIAL		RF CONNECTORS GPT-10K	
TYPE & TEMPER		HEAT TREAT. SPEC.	DRAWN
SMOOTH GRAY ENAMEL S-115			CHECKED
FINISH & SPEC. NO.		ELEC. DES. APP.	MECH. DES. APP.

ISSUE	ITEM	CHANGED FROM	DATE	CH. NO.	DRAFTS	CHECKER	ENG. APP.
B	2	IT 1 & 2 WERE CALLED ON PICT. REF RELOC	2.1.67	17765	WHD	JOB	
A	1	9/16 DIA. REQ WAS 6	6/4/59	1090	JOB	JOB	
		SCB50632B WAS NT 126 1032-3					
TOLERANCES			SCALE: SA01-143 (108FB) MODIFIED				
DEC. DIM. ±			MAXIMUM ALLOWABLE TOLERANCES HAVE BEEN DETERMINED AND ANY DEVIATIONS WILL BE CAUSE FOR REJECTION.				
FRAC. DIM. ±			REMOVE ALL BURRS AND SHARP EDGES				
ANGULAR DIM. ±							

REQ. PER UNIT	MODEL	PROJECT NO.	ASS'Y. NO.	DATE
1	GPT-10K	AX-171		
USED ON				

TOP & BOTTOM COVERS