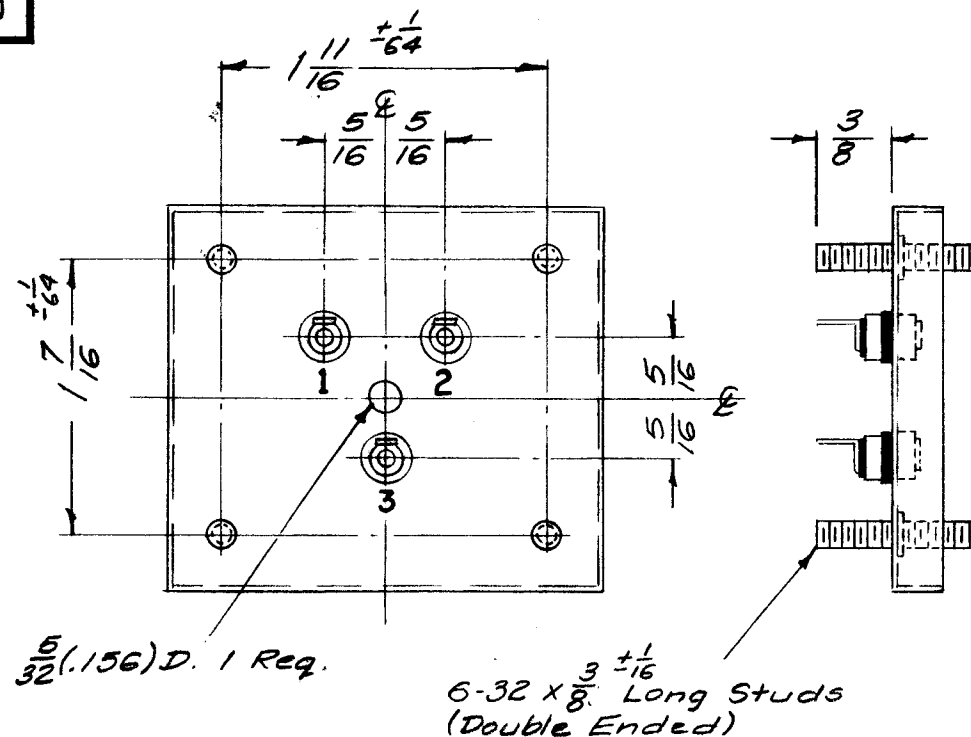


BX-175

COVER, BOTTOM

Metal Stamp Terminals as shown - 1, 2, & 3.



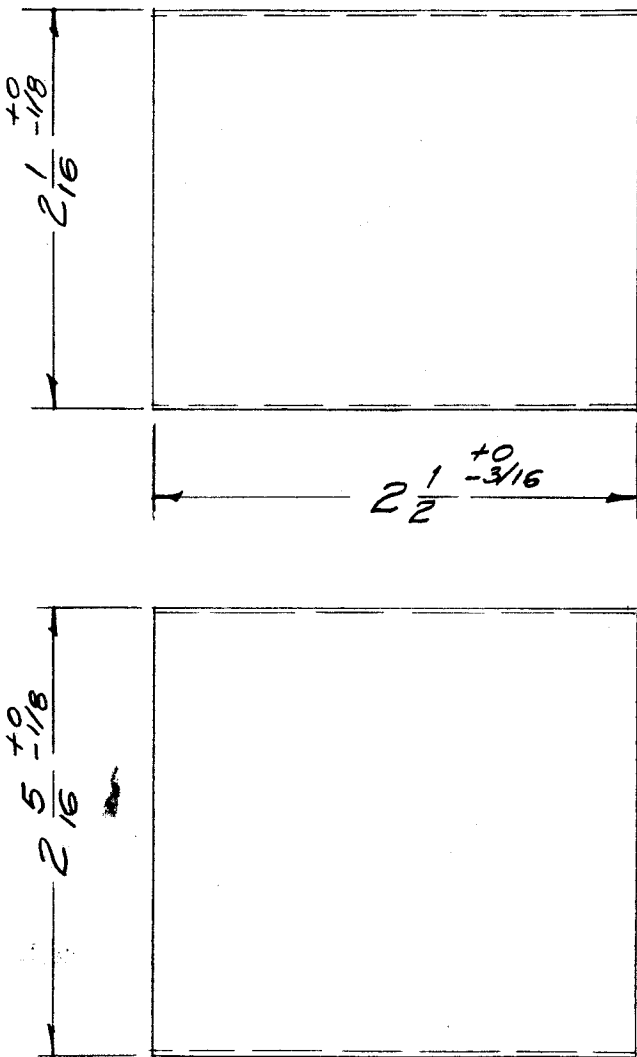
NOTICE TO PERSONS RECEIVING THIS DRAWING

THE TECHNICAL MATERIEL CORPORATION claims proprietary right in the material disclosed hereon. This drawing is issued in confidence for engineering information only and may not be reproduced or used to manufacture anything shown hereon without permission from THE TECHNICAL MATERIEL CORPORATION to the user. This drawing is loaned for mutual assistance and is subject to recall at any time.

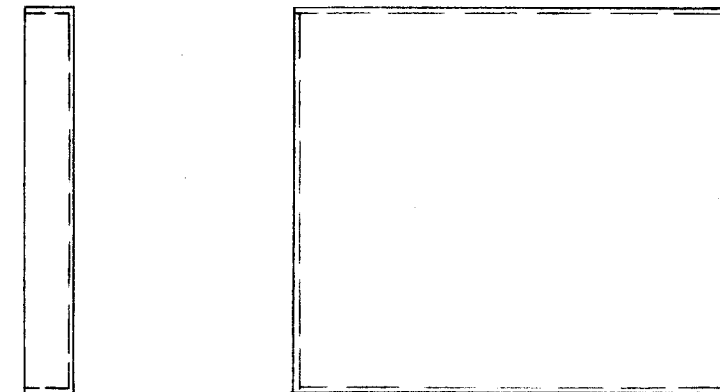
Property of:

THE TECHNICAL MATERIEL CORPORATION
MAMARONECK, NEW YORK

CASE



COVER, TOP



Heldor Can Type 108FB-D (TMC No. BX-100-BD)
Heldor Terminal No. 250-E WITH HELDOR
LUG NO. 303

ISSUE	ITEM	CHANGED FROM	DATE	CH. NO.	DRAFTS	CHECKER	ENG. APP.
A	1	Heldor No.303 Was TE-134	4-2-62	6208	GA	<i>[Signature]</i>	<i>[Signature]</i>
TOLERANCES			SCALE: FULL				
DEC. DIM. ±			MAXIMUM ALLOWABLE TOLERANCES HAVE BEEN DETERMINED AND ANY DEVIATIONS WILL BE CAUSE FOR REJECTION.				
FRAC. DIM. ± 1/64			REMOVE ALL BURRS AND SHARP EDGES				
ANGULAR DIM. ±							

1	FX-162	CLL-1	A-1905	5-20-60
1	FX-157	TTG	A-1652	2-27-59
1	FX-156	TTG	A-1651	2-27-59
REQ. PER UNIT	MODEL	PROJECT NO.	ASS'Y. NO.	DATE
USED ON				

REQ. ITEM	PART NO.	DESCRIPTION		SYMBOL
	.019 - .025 Ga.	THE TECHNICAL MATERIEL CORP.		
	STOCK SIZE	MAMARONECK, NEW YORK		
	Steel	CASE & COVERS		
	MATERIAL			
	#	#	16 ² /26/59	<i>[Signature]</i>
TYPE & TEMPER	HEAT TREAT. SPEC.	DRAWN	CHECKED	FINAL APPROVAL
Hot Tinned		<i>[Signature]</i>	<i>[Signature]</i>	<i>[Signature]</i>
FINISH & SPEC. NO.	ELEC. DES. APP.	MECH. DES. APP.	BX-175	
			A	